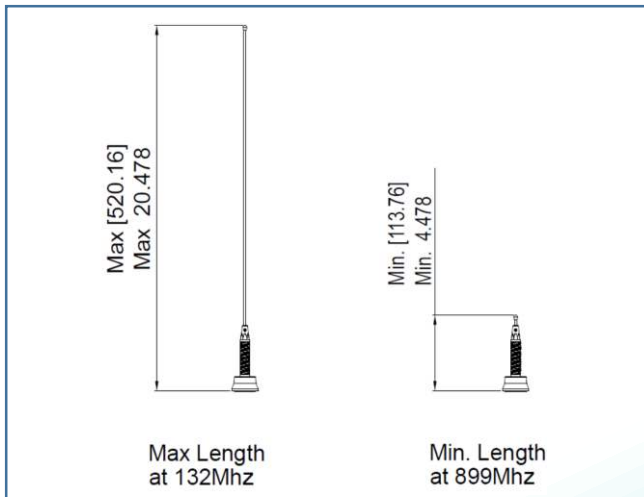
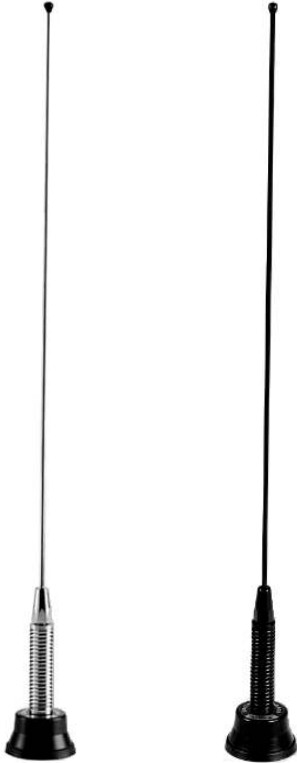


**Description:** Wideband 132-899 MHz  
Qtr Wave Field Tunable

**Series:** Willow Field Tunable

**PART NUMBERS:** Bright: **NMOWBQCFT**  
Black: **NMOWBQBFT**



All dimensions are in mm / inches

### Features:

- Wide Bandwidth
  - >24 MHz Bandwidth at VHF
  - >100 MHz Bandwidth at UHF
  - >350 MHz bandwidth at 800 Mhz
- Field Tunable 132-899 MHz
- 1/4 Wave
- Black or Bright Spring & Whip
- Centerless Ground Whip for Low-noise

### Applications:

- VHF and UHF radios
- NMO mounting
- Rugged construction for demanding vehicular applications.

Issue: 1649

In the effort to improve our products, we reserve the right to make changes judged to be necessary.

CONFIDENTIAL AND PROPRIETARY INFORMATION

This document contains confidential and proprietary information of Pulse Electronics, Inc. (Pulse) and is protected by copyright, trade secret and other state and federal laws. Its receipt or possession does not convey any rights to reproduce, disclose its contents, or to manufacture, use or sell anything it may describe. Reproduction, disclosure or use without specific written authorization of Pulse is strictly forbidden.

For more information:

Pulse Worldwide Headquarters  
12220 World Trade Drive  
San Diego, CA 92128  
USA  
Tel: 1-858-674-8100

Pulse/Larsen Antennas  
18110 SE 34<sup>th</sup> St Bldg 2 Suite 250  
Vancouver, WA 98683  
USA  
Tel: 1-360-944-7551

Europe Headquarters  
Pulse GmbH & Do, KG  
Zeppelinstrasse 15  
Herrenberg, Germany  
Tel: 49 7032 7806 0

Pulse (Suzhou) Wireless Products Co, Inc.  
99 Huo Ju Road(#29 Bldg,4<sup>th</sup> Phase  
Suzhou New District  
Jiangsu Province, Suzhou 215009 PR China  
Tel: 86 512 6807 9998



**Description:** Wideband 132-899 MHz  
Qtr Wave Field Tunable

**Series:** Willow Field Tunable

**PART NUMBERS:** Bright: NMOWBQCFT  
Black: NMOWBQBFT

## ELECTRICAL SPECIFICATIONS

Frequency	132-899 MHz
Nominal Impedance	50 $\Omega$
VSWR	2 : 1 Max
Gain	0 dBd / 2 dBi
Polarization	Vertical
Power withstanding	200 W
Connector type	NMO

## MECHANICAL SPECIFICATIONS

Color	Black
Weight	130 g
Wind-loading	100 mph
Overall Length	20.5 INCHES
Fixing system	NMO

## ENVIRONMENTAL SPECIFICATIONS

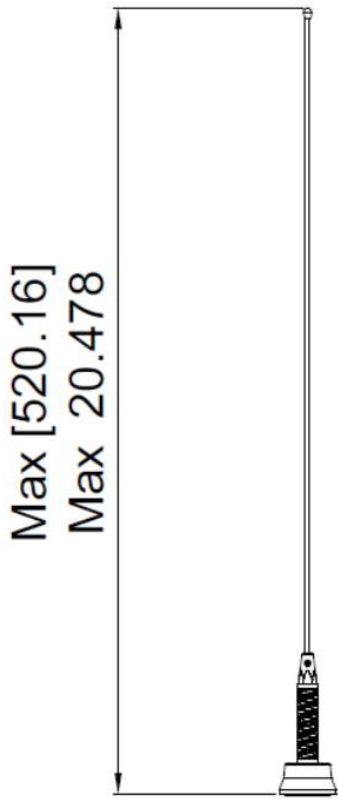
Operating temperature	-40 to 85 ° C
-----------------------	---------------

**Description:** Wideband 132-899 MHz  
Qtr Wave Field Tunable

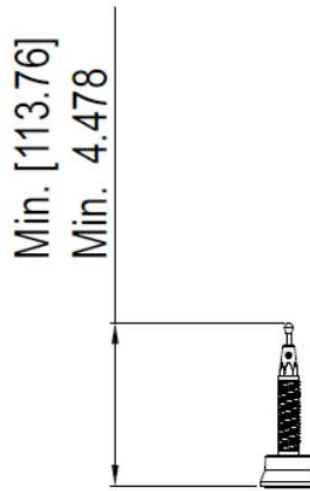
**Series:** Willow Field Tunable

**PART NUMBERS:** Bright: NMOWBQCFT  
Black: NMOWBQBFT

**MECHANICAL DRAWING**



Max Length  
at 132Mhz



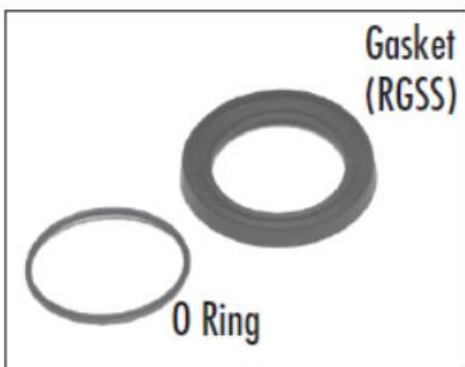
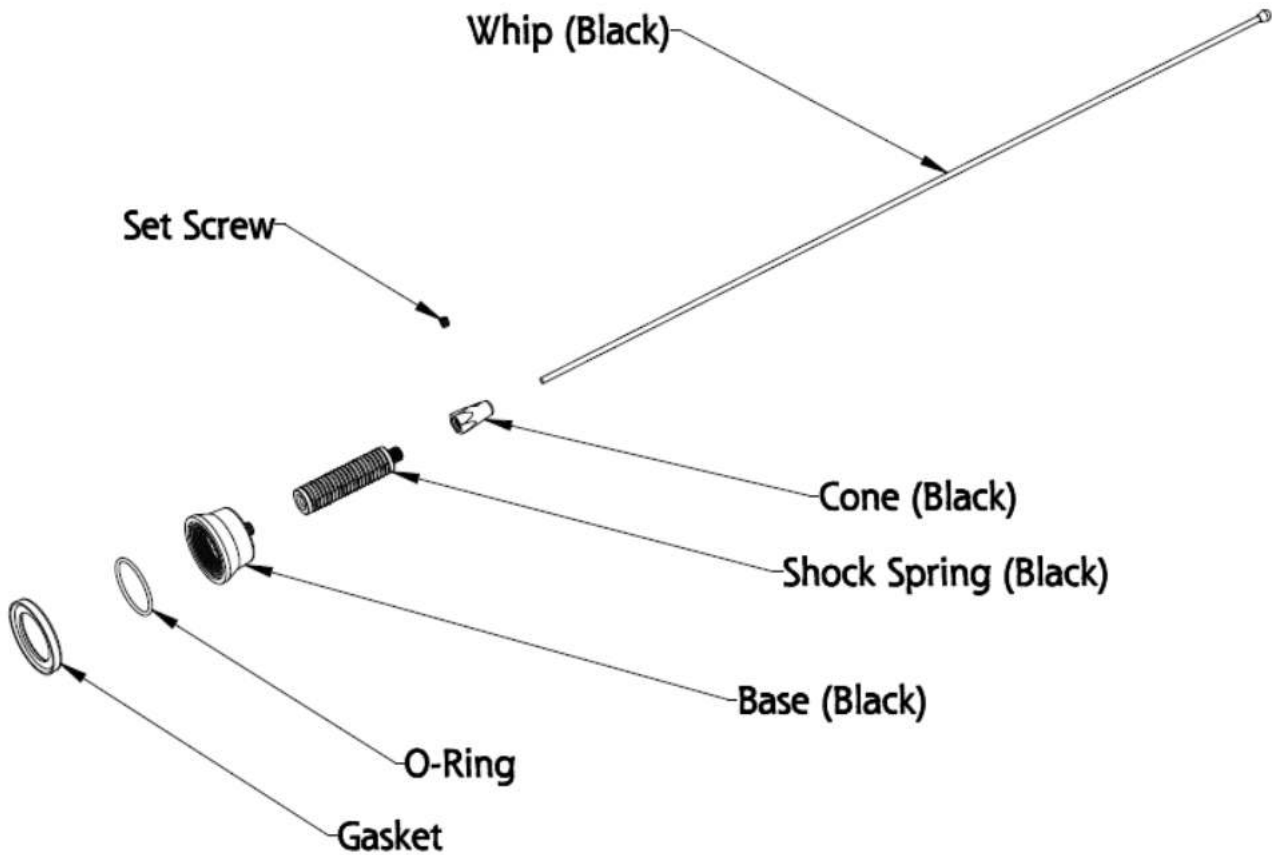
Min. Length  
at 899Mhz

**Description:** Wideband 132-899 MHz  
Qtr Wave Field Tunable

**Series:** Willow Field Tunable

**PART NUMBERS:** Bright: NMOWBQCFT  
Black: NMOWBQBFT

**OTHER SPECIFICATIONS**



**Note:** Larsen NMO antennas come from the factory with both an O Ring and a SuperSeal Gasket (RGSS). Use one or the other for mounting the antenna – both cannot be used together. The RGSS is typically used for permanent mounts.

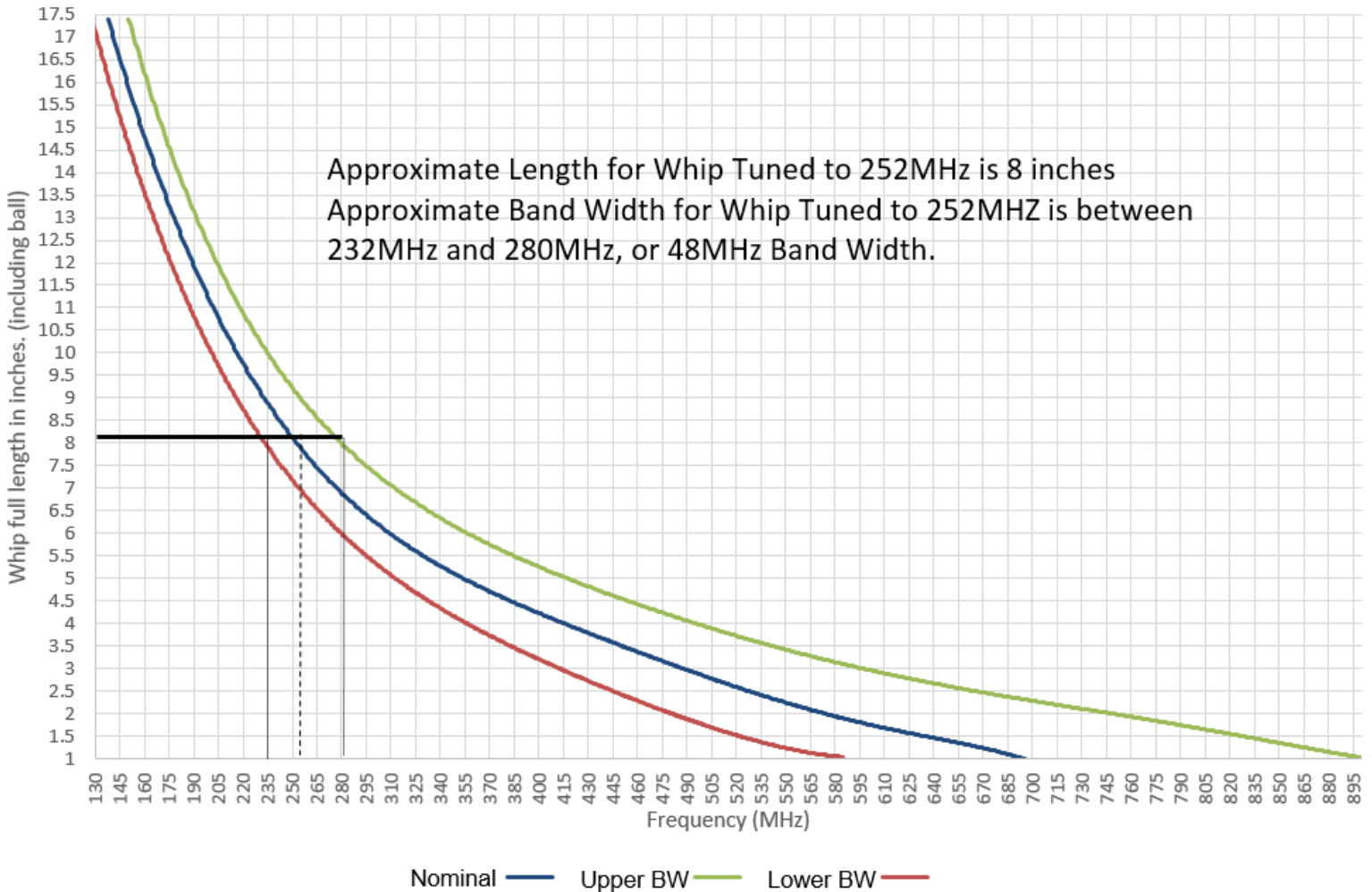
**Description:** Wideband 132-899 MHz  
Qtr Wave Field Tunable

**Series:** Willow Field Tunable

**PART NUMBERS:** Bright: NMOWBQCFT  
Black: NMOWBQBFT

**CHARTS**

Cutting Chart / Band Width Response



Issue: 1649

In the effort to improve our products, we reserve the right to make changes judged to be necessary.

CONFIDENTIAL AND PROPRIETARY INFORMATION

This document contains confidential and proprietary information of Pulse Electronics, Inc. (Pulse) and is protected by copyright, trade secret and other state and federal laws. Its receipt or possession does not convey any rights to reproduce, disclose its contents, or to manufacture, use or sell anything it may describe. Reproduction, disclosure or use without specific written authorization of Pulse is strictly forbidden.



**Description:** Wideband 132-899 MHz  
Qtr Wave Field Tunable

**Series:** Willow Field Tunable

**PART NUMBERS:** Bright: **NMOWBQCFT**  
Black: **NMOWBQBFT**

**CHARTS**

Frequency MHz		Whip Length
min	max	inch
131.6	155	17
132.8	156	16.75
134.6	152	16.5
137.9	163	16
140.9	166	15.5
145.9	173	15
150.5	177	14.5
157.6	184	14
161	187	13.5
165	190	13
171	197	12.5
177	203	12
182	206	11.5
189	218	11
194	225	10.5
200	233	10
210	248	9.5
215	254	9
225	269	8.5
237	284	8

Frequency MHz		Whip Length
min	max	inch
243	297	7.5
253	305	7
262	327	6.5
277	360	6
292	388	5.5
314	422	5
340	454	4.5
364	493	4
368	511	3.75
369	564	3.5
403	570	3.25
417	574	3
430	624	2.75
444	659	2.5
455	730	2.25
480	765	2
499	784	1.75
521	802	1.5
560	878	1.25
585	899	1