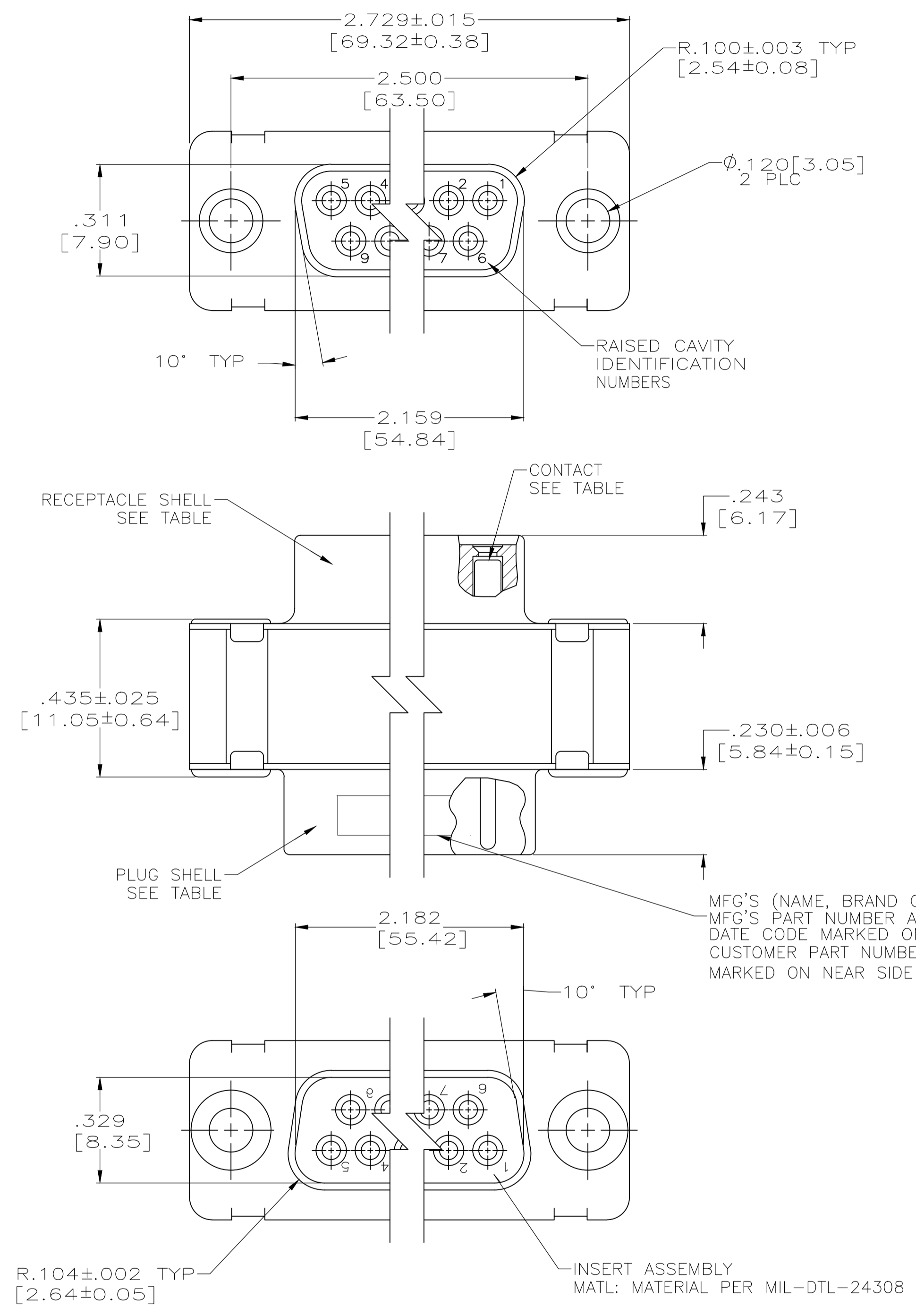
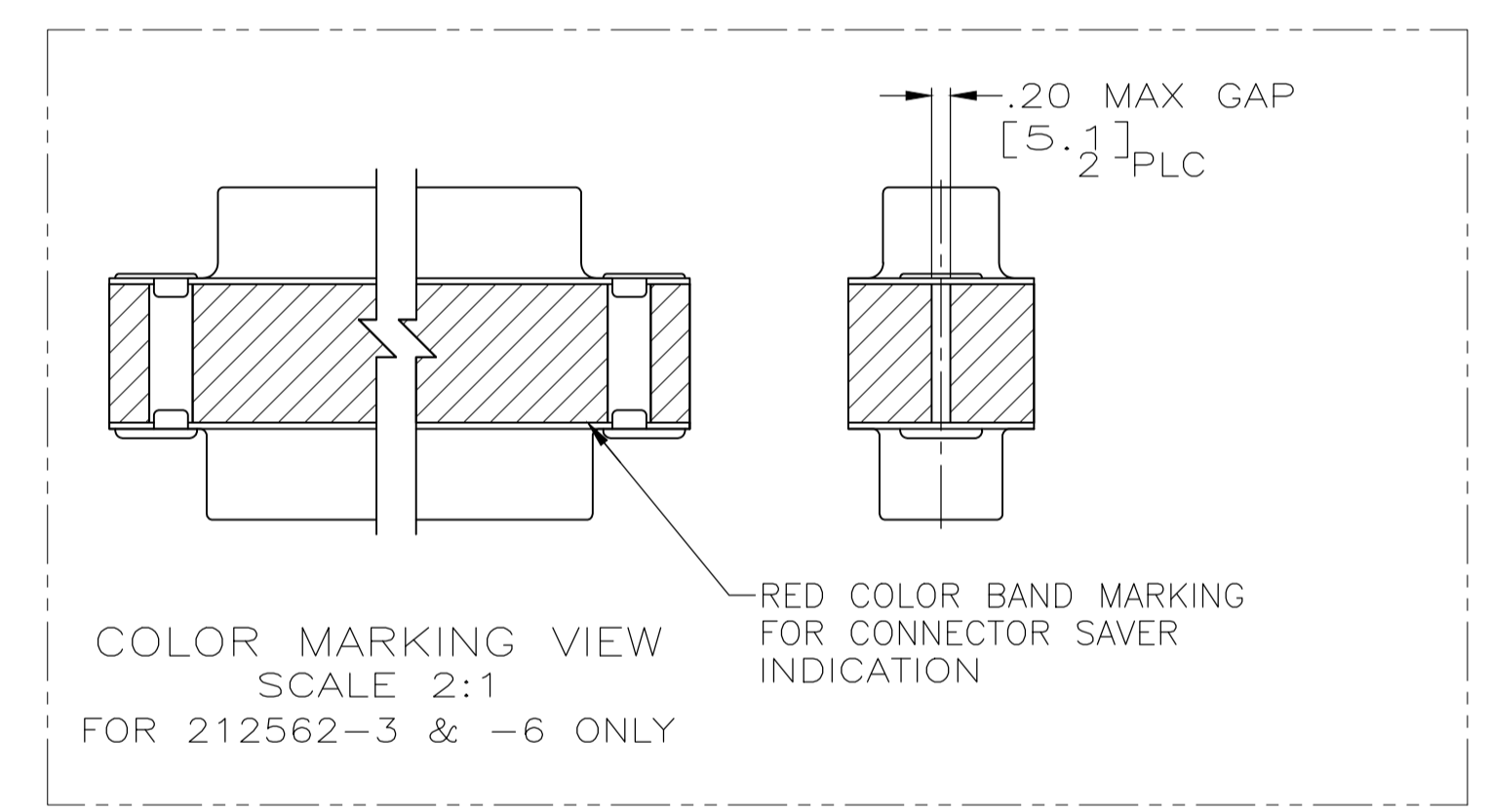


REVISIONS					
P	LTR	DESCRIPTION	DATE	DMN	APVD
U		REV PER ECO 18-019896	2-14-19	CT	DM



- CONTACTS INCLUDED IN ASSEMBLY EXCEPT FOR 212562-7.
 △ MATL: STEEL, PER ASTM-A-109.
 △ FINISH: CADMIUM PER QQ-P-416.
 △ CONTACT
 BODY MATL: BERYLLIUM COPPER PER ASTM-B-197.
 BODY FINISH: PLATED GOLD, .000050 MIN THK PER MIL-G-45204 OVER NICKEL, .000050 MIN THK PER QQ-N-290.
 HOOD MATL: STAINLESS STEEL PER ASTM-A-167.
 HOOD FINISH: PASSIVATED PER ASTM-A-380.
 △ FINISH: PLATED ZINC .00020 MIN THK PER ASTM-B-633. YELLOW CHROMATE FINISH.
 △ MATL: BRASS PER ASTM-B-36.
 △ FINISH: PLATED GOLD, .000050 MIN THK PER MIL-G-45204 OVER COPPER, .000100 MIN THK PER MIL-C-14550.
 △ CONTACT
 BODY MATL: BERYLLIUM COPPER PER ASTM-B-197.
 BODY AND HOOD FINISH: PLATED GOLD, .000050 MIN THK PER MIL-G-45204 OVER COPPER, .000100 MIN THK PER MIL-C-14550.
 HOOD MATL: BRASS PER ASTM-B-36



△△	△△	---	PT2-111-4	212562-7
△△	△△	△	4U884 SOCN R10002677-0104	212562-6
△△	△△	△	PT2-111-10	212562-5
△△	△△	△	-	212562-4
△△	△△	△	(1J02-104)	212562-3
△△	△△	△	-	212562-2
△△	△△	△	-	212562-1
EYELET	SHELLS	CONTACT	CUSTOMER P/N	PART NO.

OBSOLETE

THIS DRAWING IS A CONTROLLED DOCUMENT. DIN 27-May-15
 MANJUNATH G M
 CHK CHARLES THOMAS 27-May-15
 APVD CHARLES THOMAS 27-May-15
 NAME CONNECTOR SAVER, AMPLIMITE 37 POSITION, SIZE 4, SERIES 109

STE TE Connectivity

DIMENSIONS: INCHES TOLERANCES UNLESS OTHERWISE SPECIFIED:
 0 PLC ± -
 1 PLC ± -
 2 PLC ± -
 3 PLC ± .005 (0.13)
 4 PLC ± -
 ANGLES ± -

MATERIAL FINISH APPLICATION SPEC WEIGHT 0 SIZE A1 CAGE CODE DRAWING NO 00779 C=212562 RESTRICTED TO CUSTOMER DRAWING SCALE 4:1 SHEET 1 OF 1 REV U