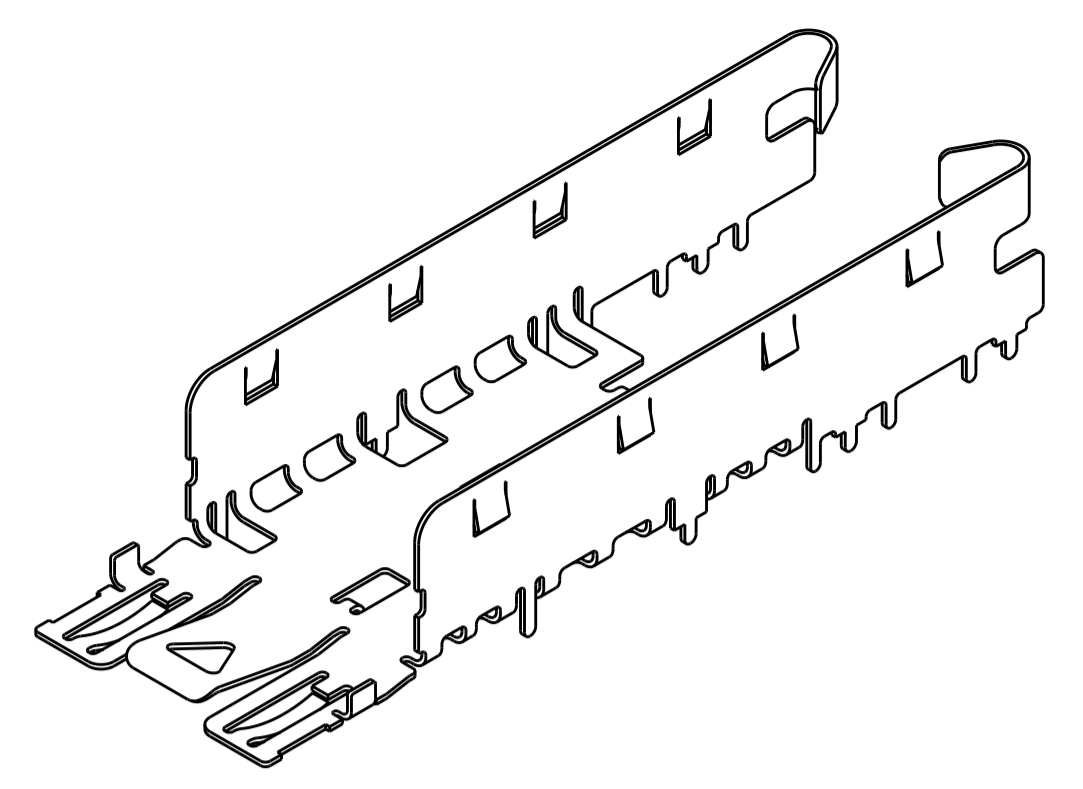
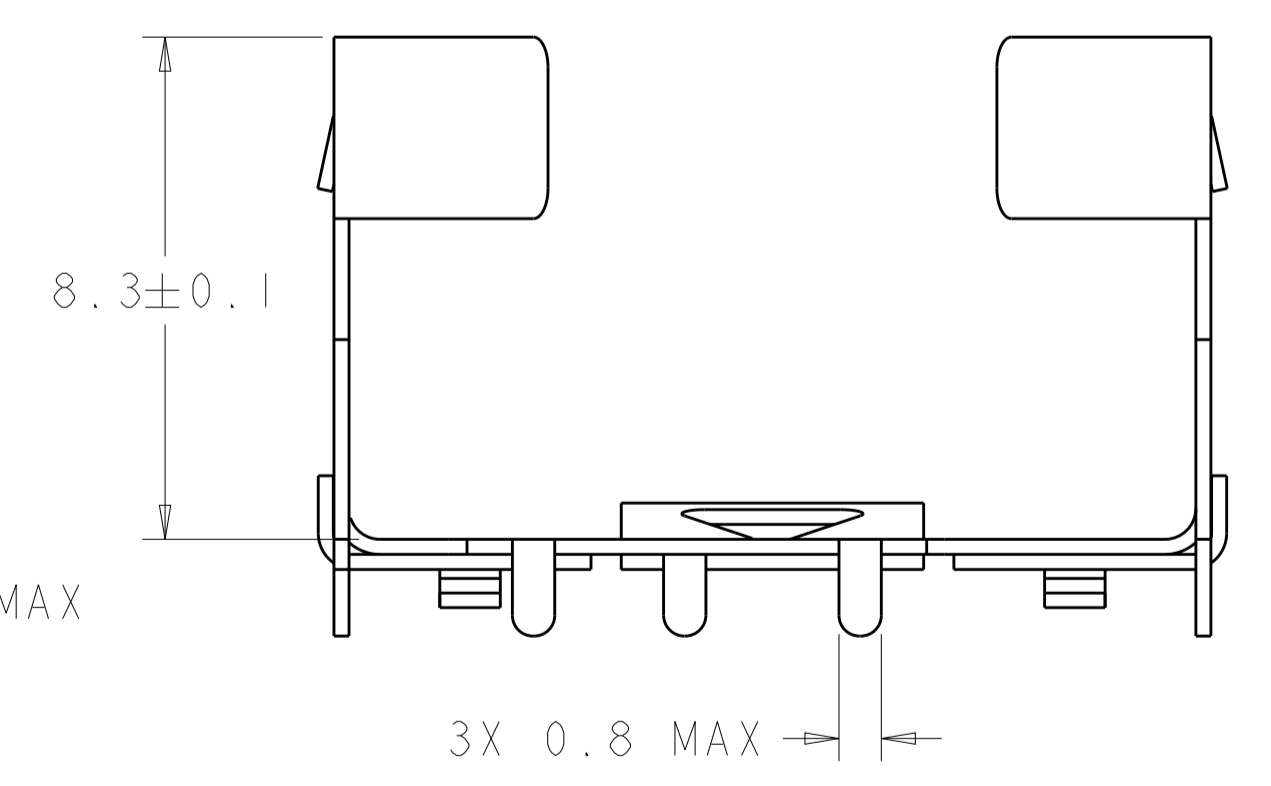
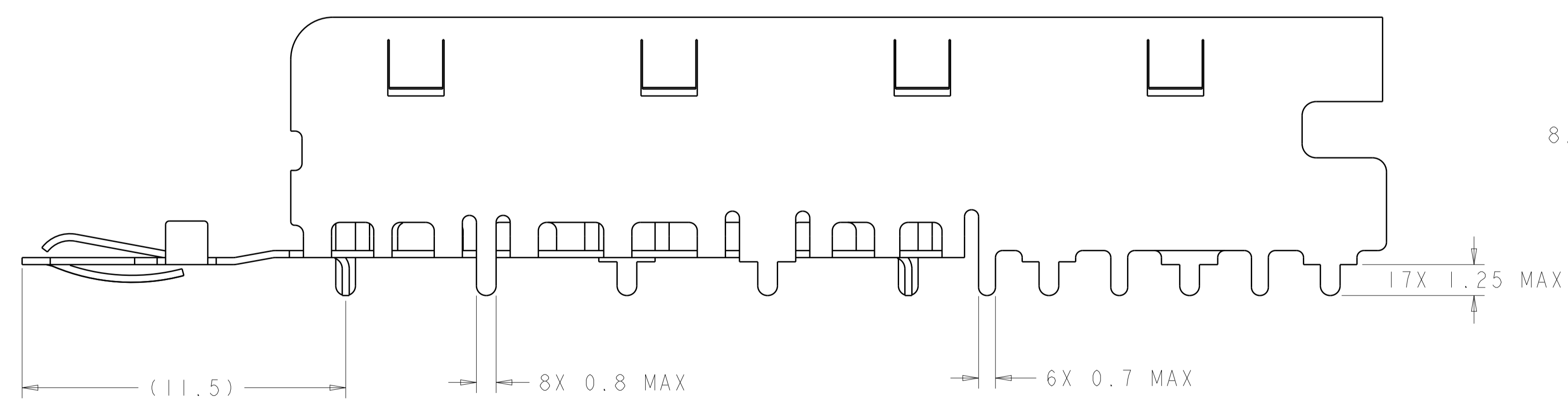
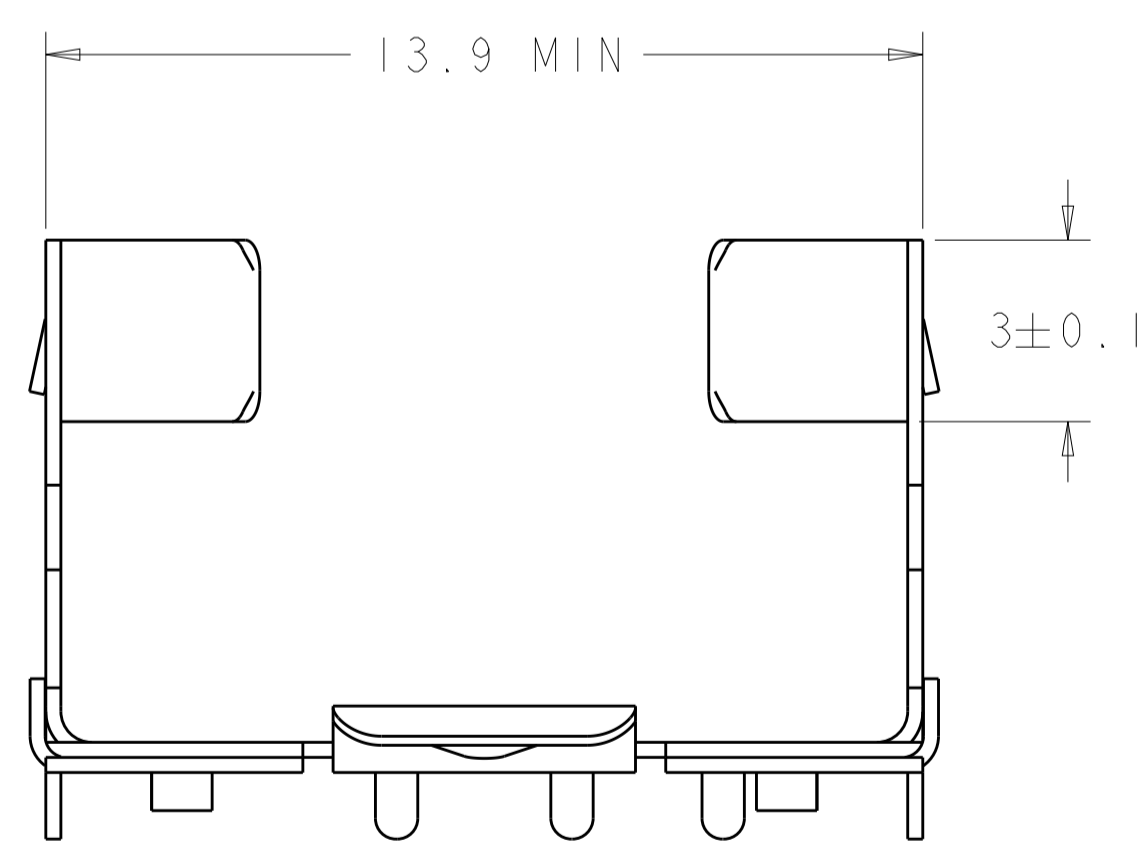
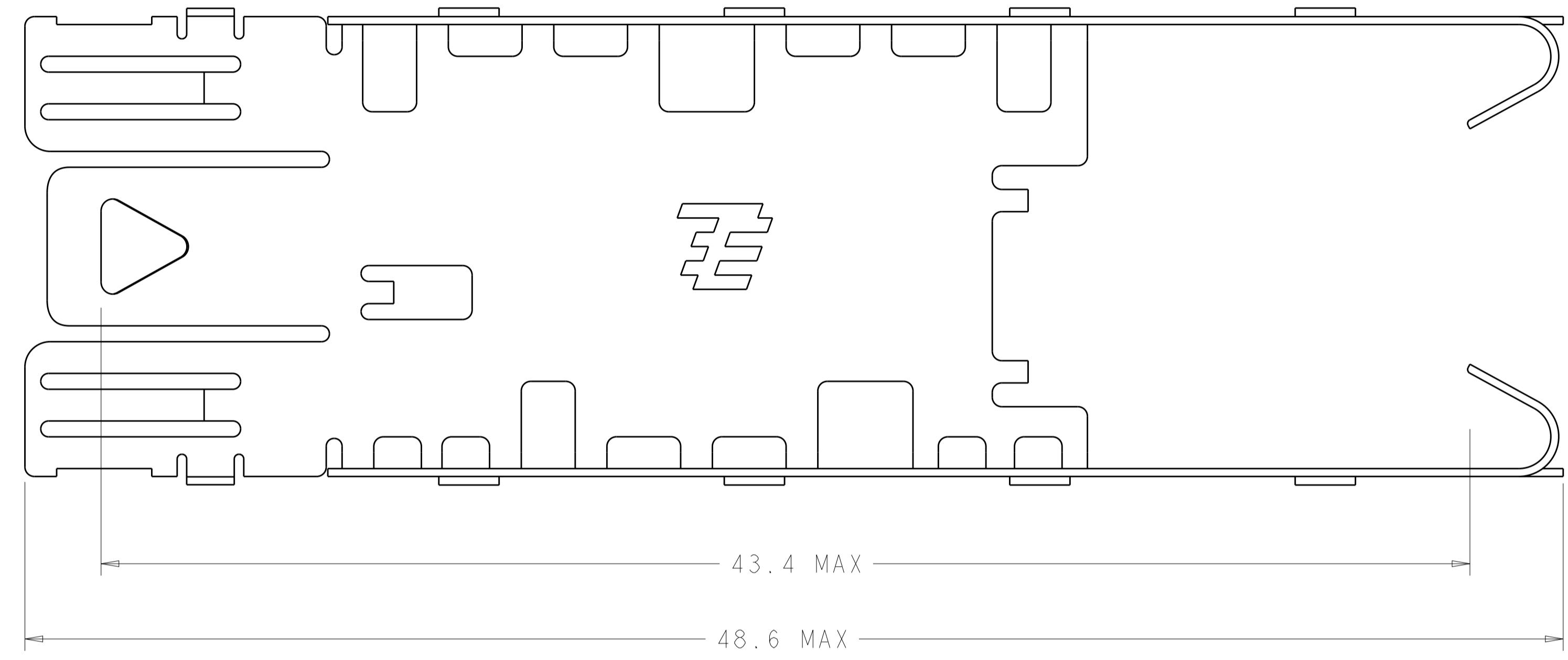


LOC	DIST	REVISIONS			
P	LTN	DESCRIPTION	DATE	DWN	APVD
GP	00				
	C1	REVISED PER ECO-11-005033	19MAR2011	RK	HMR
	C2	REVISED PER ECO-18-004515	23MAR2018	IT	SH



SCALE 3:1

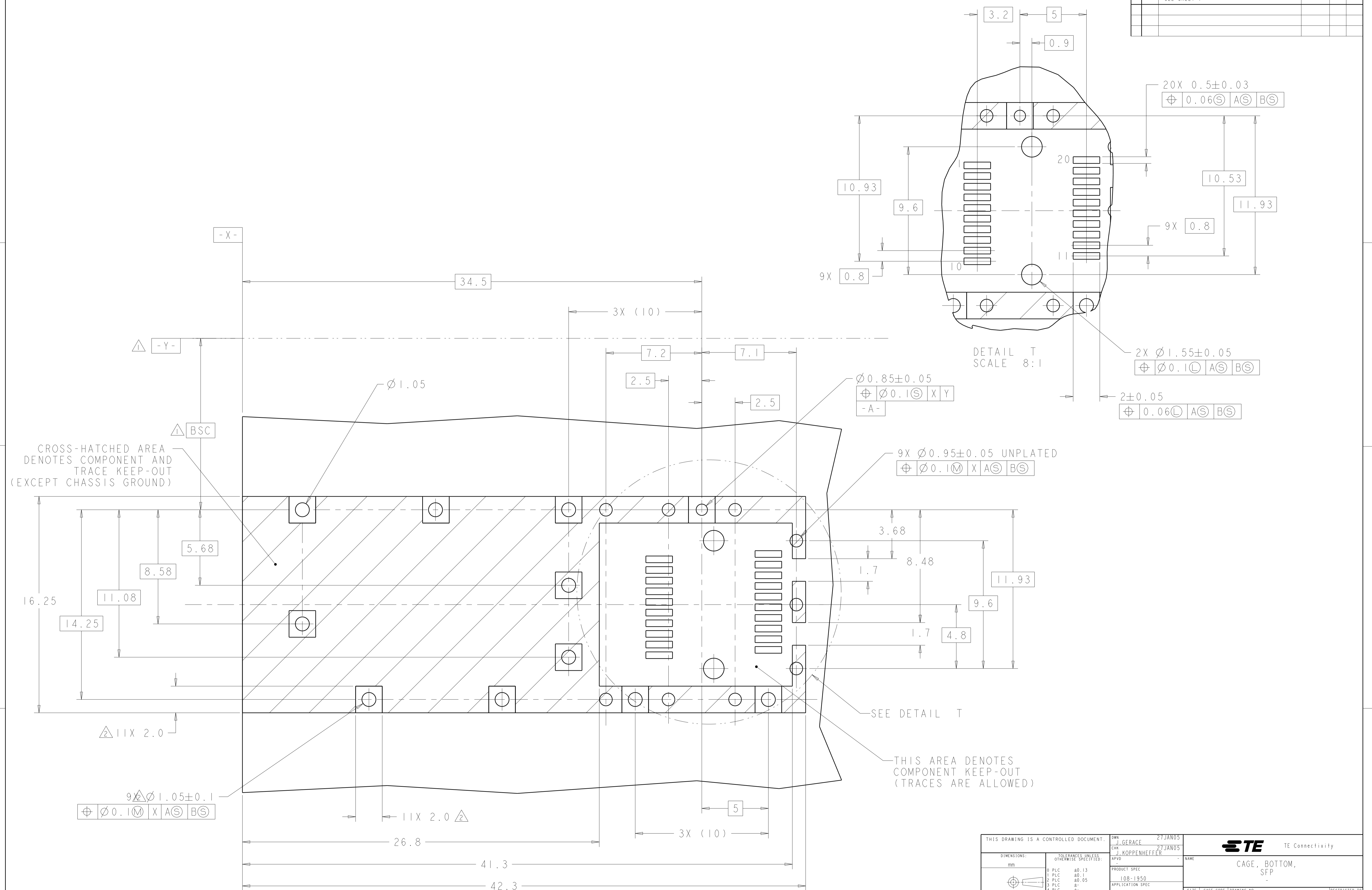
- △ DATUM AND BASIC DIMENSION, TO BE ESTABLISHED BY CUSTOMER.
 - △ PADS AND VIAS ARE CHASSIS GROUND.
 - △ COPPER ALLOY, 0.25 THICKNESS.
 - △ 1.25 MICRONS MIN TIN OVER 0.125 MICROMETERS MIN NICKEL. BARE EDGES PERMISSIBLE.
5. PACKAGED 240 PIECES PER 13 INCH REEL.



OBSELETE 6367034-1
PART NUMBER

THIS DRAWING IS A CONTROLLED DOCUMENT.		DWN J. GERACE 27JAN05	TE Connectivity	
DIMENSIONS:		CHK J. KOPPENHEFFER	NAME	
TOLERANCES UNLESS OTHERWISE SPECIFIED:		PRODUCT SPEC	CAGE, BOTTOM, SFP	
mm		108-1950	SIZE CAGE CODE DRAWING NO	
0 PLC ±0.13		APPLICATION SPEC	RESTRICTED TO	
1 PLC ±0.1		114-13017	A100779C=6367034	
2 PLC ±0.05		WEIGHT	SCALE 8:1 SHEET 1 OF 2 REV C2	
3 PLC ±		CUSTOMER DRAWING		
4 PLC ±				
ANGLES				
FINISH				

LOC	DIST	REVISIONS					
GP	00	P	LTH	DESCRIPTION	DATE	DWN	APVD
		-	-	SEE SHEET 1	-	-	-



THIS DRAWING IS A CONTROLLED DOCUMENT.		DWN: J. GERACE 27JAN05	TE Connectivity
DIMENSIONS: mm		CHK: J. KOPPENHEFFER	
TOLERANCES UNLESS OTHERWISE SPECIFIED:		APVD: -	NAME: CAGE, BOTTOM, SFP
0 PLC ±0.13	1 PLC ±0.1	2 PLC ±0.05	PRODUCT SPEC: 108-1950
3 PLC ±0.05	4 PLC ±0.05	ANGLES ±0.1	APPLICATION SPEC: 114-13017
MATERIAL: -	FINISH: -	WEIGHT: -	SIZE: A1
CUSTOMER DRAWING			SCALE: 8:1 SHEET: 2 OF 2 REV: C2