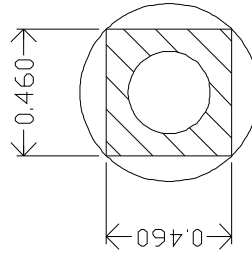
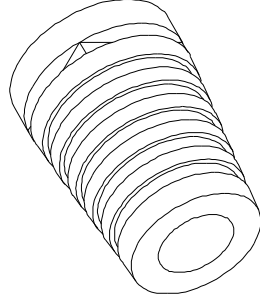
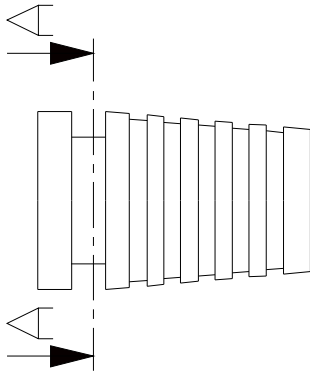
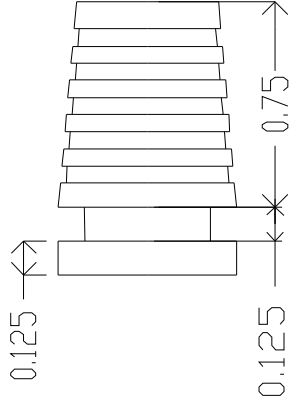
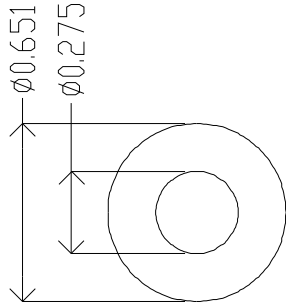


| REVISIONS |             | DATE | APPROVED |
|-----------|-------------|------|----------|
| ZONE      | REV.        |      |          |
|           | DESCRIPTION |      |          |



MOLD MATERIAL: ISC P/N: 5000214, PVC, M1472. Black, RoHS

| DIMENSIONS ARE IN INCHES |        | NAME      | DATE     |
|--------------------------|--------|-----------|----------|
| TOLERANCES:              |        | R. FIERRO | 09/07/05 |
| FRACTIONAL ±             |        |           |          |
| ANGULAR: MACH ±          | BEND ± |           |          |
| TWO PLACE DECIMAL ±      |        |           |          |
| THREE PLACE DECIMAL ±    |        |           |          |
| MATERIAL                 | ---    |           |          |
| FINISH                   | ---    |           |          |
| USED ON                  |        |           |          |
| NEXT ASSY                |        |           |          |
| APPLICATION              |        |           |          |
| DO                       | NDT    | SCALE     | DRAWING  |

ISC Engineering  
 4351 Schaefer Ave, Chino, CA 91710  
 Ph: 909-596-3315 Fax: 909-596-3335  
 www.iscengineering.com  
 www.overnaltooling.com

1461040-275-E-460X460-651-0

| SIZE       | DWG. NO. | REV.         |
|------------|----------|--------------|
| A          | 1467374  |              |
| SCALE: 2:1 | WEIGHT:  | SHEET 1 OF 1 |

Dimensions are subject to change.  
 PROPRIETARY AND CONFIDENTIAL  
 THE INFORMATION CONTAINED IN THIS DRAWING IS THE SOLE PROPERTY OF ISC ENGINEERING. ANY REPRODUCTION IN PART OR AS A WHOLE WITHOUT THE WRITTEN PERMISSION OF ISC ENGINEERING IS PROHIBITED.

**ISC ENGINEERING**  
**CONTROLLED COPY**  
 Rich Fierro 02/08/2019