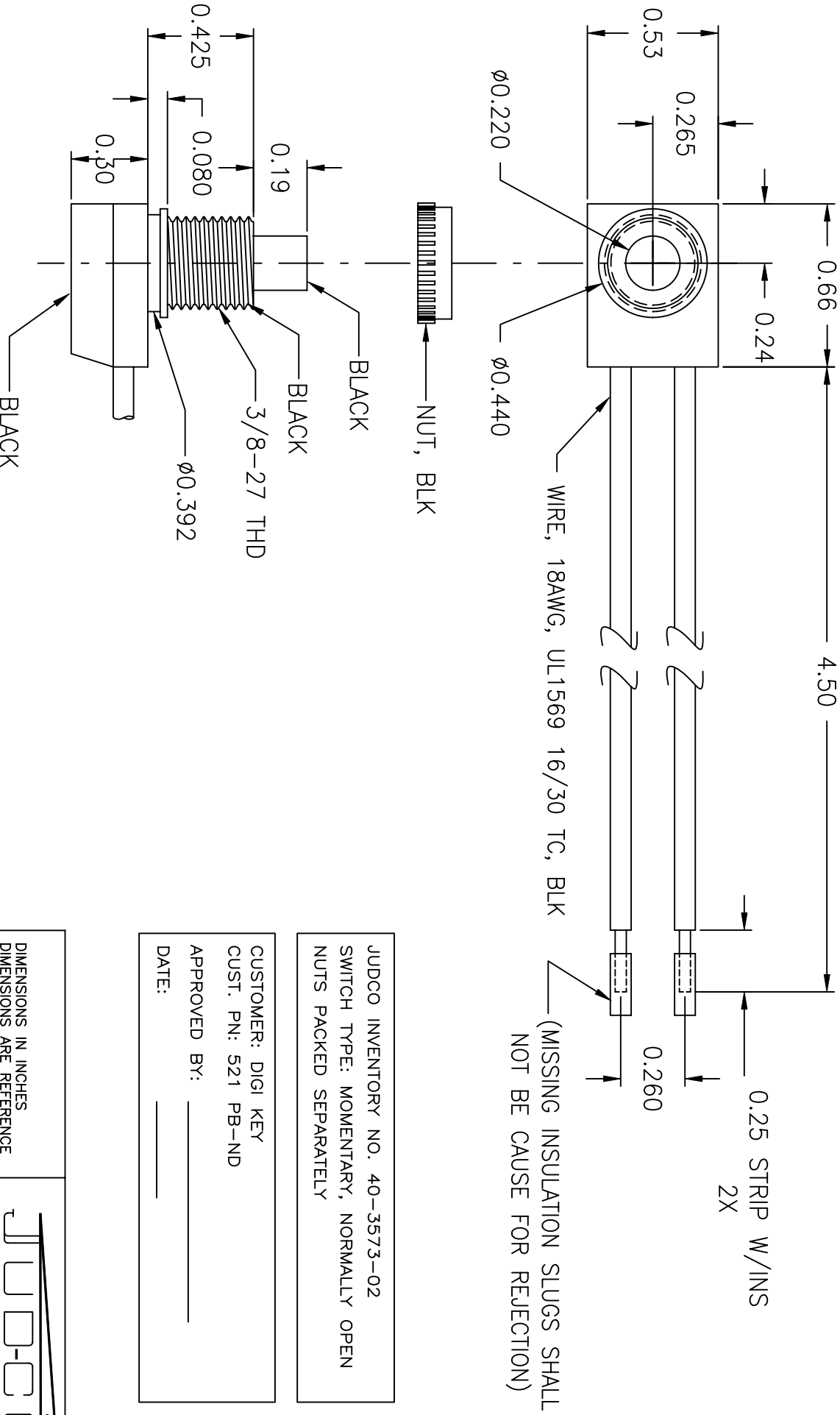


LTR	EN	DESCRIPTION	APPR	BY	DATE
A	-	INITIAL RELEASE	RB	EM	2-16-04



JUDCO INVENTORY NO. 40-3573-02
 SWITCH TYPE: MOMENTARY, NORMALLY OPEN
 NUTS PACKED SEPARATELY

CUSTOMER: DIGI KEY
 CUST. PN: 521 PB-ND
 APPROVED BY: _____
 DATE: _____

DIMENSIONS IN INCHES DIMENSIONS ARE REFERENCE		
TITLE HARBOR CITY CALIFORNIA		
DRAWN: EM	02-16-04	OUTLINE J-188A-2S NON UL WIRES
APPR: KJ	02-16-04	
1415U578A.DWG		DWG. NO. 1415-578
SHEET		1 OF 1

This document embodies a product, component, and/or design proprietary to JUDCO MANUFACTURING INC., and which is protected either as a trade secret, by U.S. Patent, or by copyright. It may not be used in any way without written express consent of JUDCO MANUFACTURING INC.