



Inscription plate for illuminated pushbutton, round, milky with black font, with inscription: Störung

|   |                             |
|---|-----------------------------|
| product brand name  | SIRIUS ACT                  |
| product designation   | Insert label                |
| product type designation  | 3SU1                        |
| <b>General technical data</b>                                       |                             |
| shock resistance for railway applications according to EN 61373     | Category 1, Class B         |
| vibration resistance for railway applications according to EN 61373 | Category 1, Class B         |
| Substance Prohibittance (Date)                                      | 10/01/2014                  |
| <b>Ambient conditions</b>   |                             |
| ambient temperature   |                             |
| • during operation  | 70 ... -25 °C               |
| • during storage and transport                                      | 80 ... -40 °C               |
| <b>Accessories</b>  |                             |
| material of accessory   | Plastic                     |
| fastening method of label   | insert                      |
| marking of inscription plate  | Interference                |
| shape of inscription plate  | Round                       |
| color of inscription plate  | milky (plate); black (text) |

|                                |                           |
|--------------------------------|---------------------------|
| <b>Certificates/ approvals</b> |                           |
| General Product Approval       | Declaration of Conformity |



[Confirmation](#)



EG-Konf.

|                          |                          |
|--------------------------|--------------------------|
| <b>Test Certificates</b> | <b>Marine / Shipping</b> |
|--------------------------|--------------------------|

[Type Test Certificates/Test Report](#)



ABS



LRS



PRS



RINA



RMRS

|              |
|--------------|
| <b>other</b> |
|--------------|

[Environmental Con-](#)

[Confirmation](#)

Further information

Information- and Downloadcenter (Catalogs, Brochures,...)

<https://www.siemens.com/ic10>

Industry Mall (Online ordering system)

<https://mall.industry.siemens.com/mall/en/en/Catalog/product?mfb=3SU1900-0AB71-0AQ0>

Cax online generator

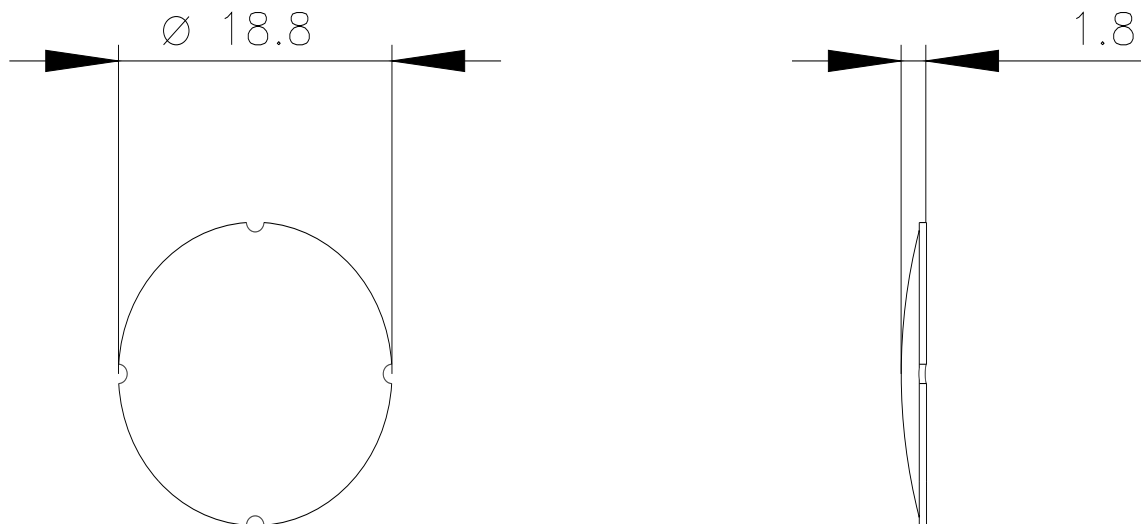
<http://support.automation.siemens.com/WW/CAXorder/default.aspx?lang=en&mfb=3SU1900-0AB71-0AQ0>

Service&Support (Manuals, Certificates, Characteristics, FAQs,...)

<https://support.industry.siemens.com/cs/ww/en/ps/3SU1900-0AB71-0AQ0>

Image database (product images, 2D dimension drawings, 3D models, device circuit diagrams, EPLAN macros, ...)

[http://www.automation.siemens.com/bilddb/cax\\_de.aspx?mfb=3SU1900-0AB71-0AQ0&lang=en](http://www.automation.siemens.com/bilddb/cax_de.aspx?mfb=3SU1900-0AB71-0AQ0&lang=en)



last modified:

3/29/2022 