

# Printed-circuit board connector - DMCV 0,5/ 5-G1-2,54 SMD R44 - 1845205

Please be informed that the data shown in this PDF Document is generated from our Online Catalog. Please find the complete data in the user's documentation. Our General Terms of Use for Downloads are valid (<http://phoenixcontact.com/download>)

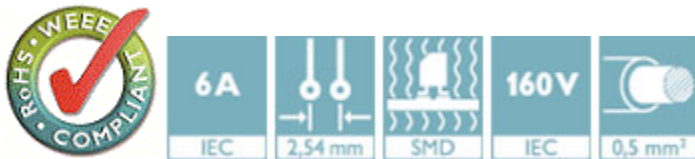
Header, Nominal current: 6 A, Rated voltage (III/2): 160 V, Number of positions: 5, Pitch: 2.54 mm, Color: black, Contact surface: Gold, Mounting: SMD soldering, Sample values available under SAMPLE DMC...



The figure shows a 10-pos. version with 20 contacts

## Why buy this product

- Gold-plated contacts ensure transfer quality remains stable over the long term
- Designed for integration into the SMT process
- Vertical connection enables multi-row arrangement on the PCB
- Small component size for applications where space is at a premium



## Key Commercial Data

|                        |          |
|------------------------|----------|
| Packing unit           | 1 STK    |
| Minimum order quantity | 330 STK  |
| Custom tariff number   | 85366990 |
| Country of origin      | Germany  |

## Technical data

### Environmental Product Compliance

|            |  |
|------------|--|
| China RoHS | No hazardous substances above threshold values |
|------------|--|

### Dimensions

|             |          |
|-------------|----------|
| Length      | 7.39 mm  |
| Pitch       | 2.54 mm  |
| Dimension a | 10.16 mm |
| Width       | 13.2 mm  |

# Printed-circuit board connector - DMCV 0,5/ 5-G1-2,54 SMD R44 - 1845205

## Technical data

### Dimensions

|                |                |
|----------------|----------------|
| Height         | 7.1 mm         |
| Pin dimensions | 0,64 x 0,64 mm |
| Pin spacing    | 2.54 mm        |

### General

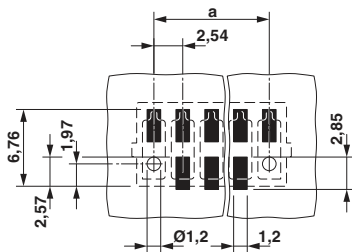
|  |                    |
|--|--------------------|
| Range of articles                      | DMCV 0,5/...G1-SMD |
| Insulating material group              | IIIa               |
| Rated surge voltage (III/3)            | 2.5 kV             |
| Rated surge voltage (III/2)            | 2.5 kV             |
| Rated surge voltage (II/2)             | 2.5 kV             |
| Rated voltage (III/3)                  | 32 V               |
| Rated voltage (III/2)                  | 160 V              |
| Rated voltage (II/2)                   | 160 V              |
| Connection in acc. with standard       | EN-VDE             |
| Nominal current $I_N$                  | 6 A                |
| Insulating material                    | LCP                |
| Flammability rating according to UL 94 | V0                 |
| Color                                  | black              |
| Number of positions                    | 5                  |

### Standards and Regulations

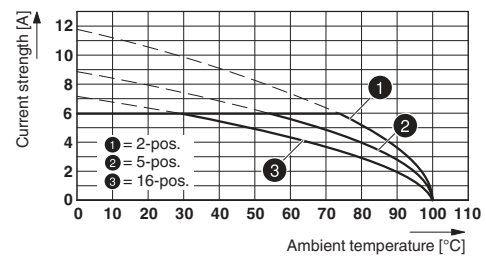
|  |        |
|--|--------|
| Connection in acc. with standard       | EN-VDE |
| Flammability rating according to UL 94 | V0     |

## Drawings

Drilling diagram



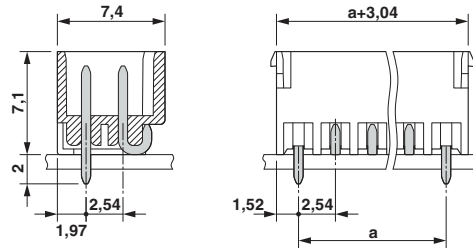
Diagram



Type: DFMC 0,5/...-ST-2,54 with DMCV 0,5/...-G1-2,54 SMD R...

# Printed-circuit board connector - DMCV 0,5/ 5-G1-2,54 SMD R44 - 1845205

Dimensional drawing



## Classifications

eCl@ss

|            |          |
|------------|----------|
| eCl@ss 5.1 | 27260701 |
| eCl@ss 6.0 | 27260704 |
| eCl@ss 8.0 | 27440402 |
| eCl@ss 9.0 | 27440402 |

ETIM

|          |          |
|----------|----------|
| ETIM 4.0 | EC002637 |
| ETIM 5.0 | EC002637 |

## Approvals

Approvals

Approvals

cULus Recognized / VDE Gutachten mit Fertigungsüberwachung / IEC60320 CB Scheme / EAC


Ex Approvals


## Approval details

|  |       |      |
|--|-------|------|
| cULus Recognized <a href="http://database.ul.com/cgi-bin/XYV/template/LISEXT/1FRAME/index.htm">http://database.ul.com/cgi-bin/XYV/template/LISEXT/1FRAME/index.htm</a> E60425-19920306 |       |      |
|  | B     | C    |
| Nominal current I <sub>N</sub>   | 6 A   | 6 A  |
| Nominal voltage U <sub>N</sub>   | 150 V | 50 V |

# Printed-circuit board connector - DMCV 0,5/ 5-G1-2,54 SMD R44 - 1845205

## Approvals

|  |       |
|--|-------|
| VDE Gutachten mit Fertigungsüberwachung  <a href="http://www.vde.de">http://www.vde.de</a> 40042389 |       |
| Nominal current IN   | 6 A   |
| Nominal voltage UN   | 160 V |

|   |       |
|---|-------|
| IECEE CB Scheme  <a href="http://www.iecee.org/">http://www.iecee.org/</a> DE1-55740 |       |
| Nominal current IN  | 6 A   |
| Nominal voltage UN  | 160 V |

|             |
|-------------|
| EAC B.01742 |
|-------------|

## Accessories

### Accessories

#### Labeled terminal marker

Marker card - SK 2,54/2,8:FORTL.ZAHLEN - 0804853



Marker card, Card, white, labeled, Horizontal: Consecutive numbers 1 - 10, 11 - 20, etc. up to 91 - 99, Mounting type: Adhesive, for terminal block width: 2.54 mm, Lettering field: 2.54 x 2.8 mm

Sample set - SAMPLE DMCV 0,5/ 5-G1-2,54 SMD - 1859974



Header, Nominal current: 6 A, Rated voltage (III/2): 160 V, Number of positions: 5, Pitch: 2.54 mm, Color: black, Contact surface: Gold, Mounting: SMD soldering

## Additional products

## Printed-circuit board connector - DMCV 0,5/ 5-G1-2,54 SMD R44 - 1845205

### Accessories

Printed-circuit board connector - DFMC 0,5/ 5-ST-2,54 - 1844604



Plug, nominal current: 6 A, rated voltage (III/2): 160 V, number of positions: 5 with 10 contacts, pitch: 2.54 mm, connection method: spring connection, color: black, contact surface: gold