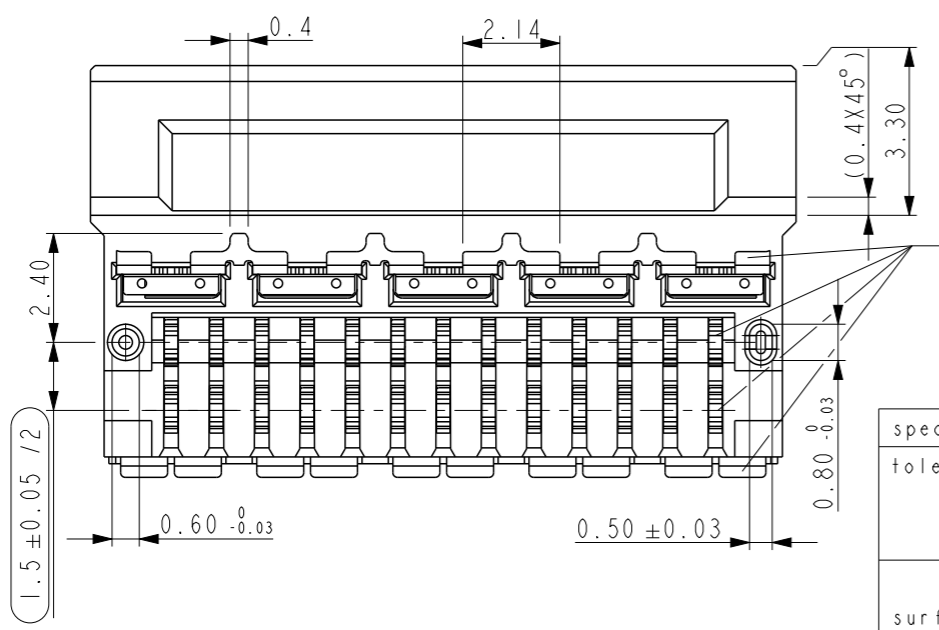
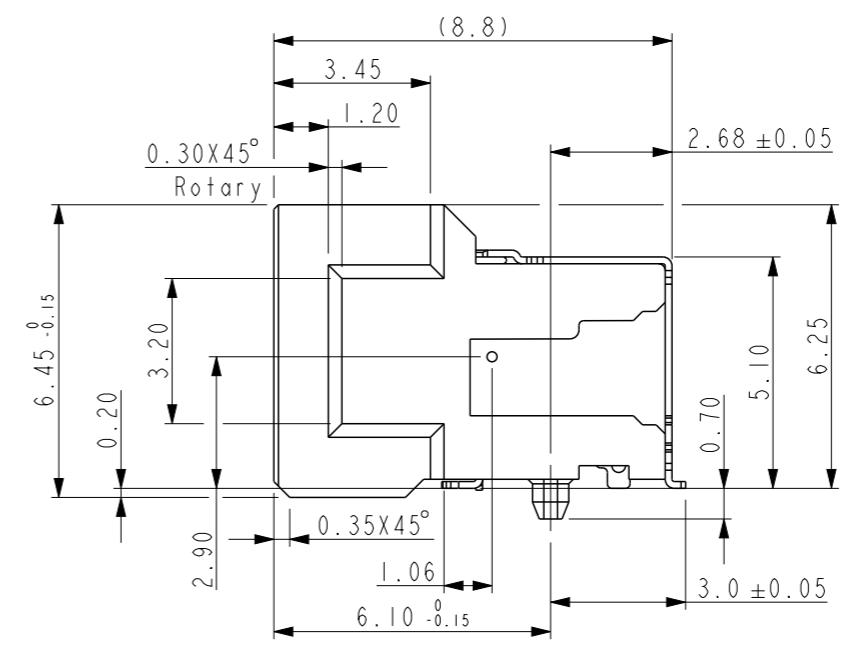
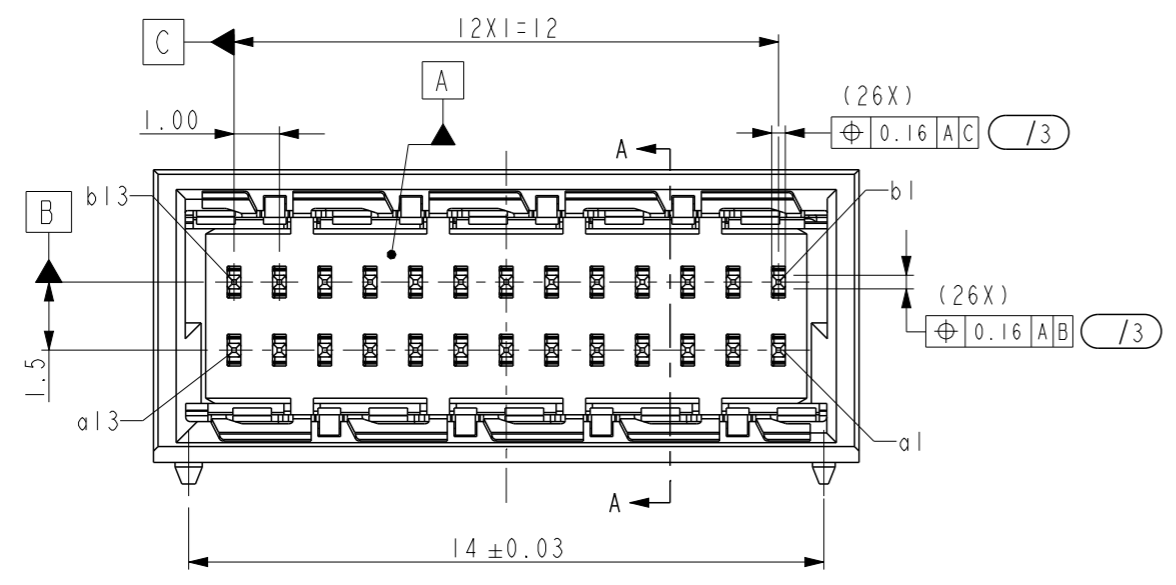
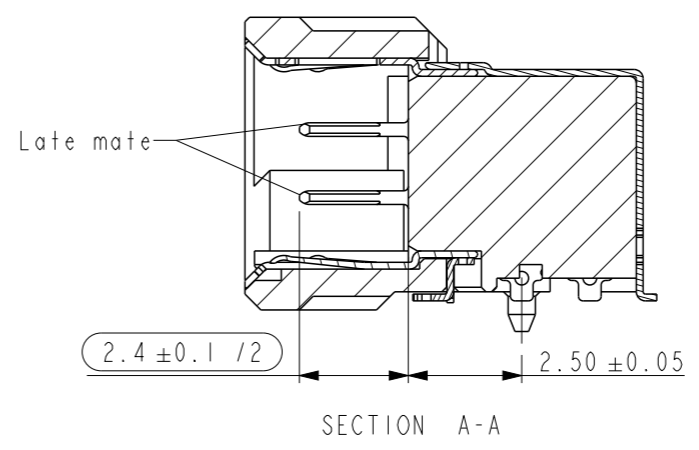
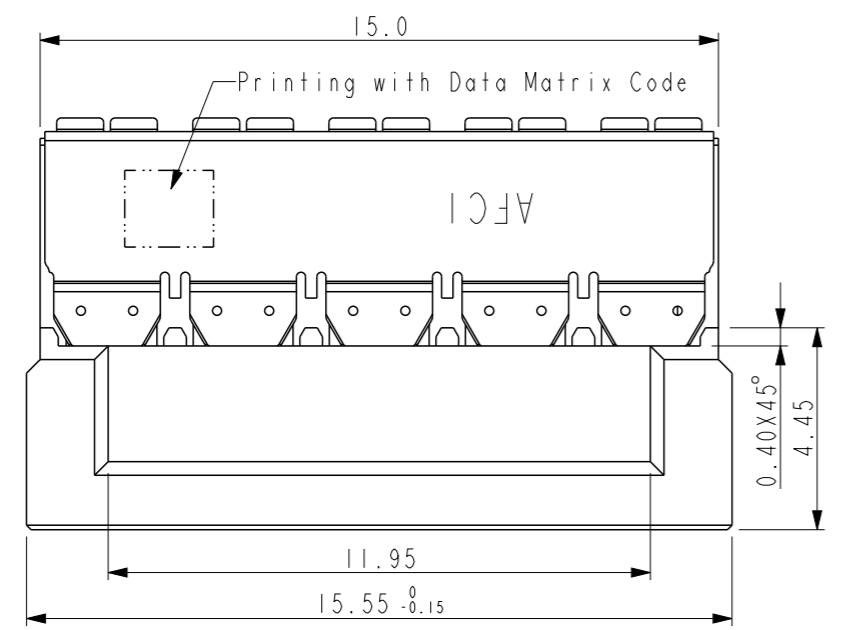
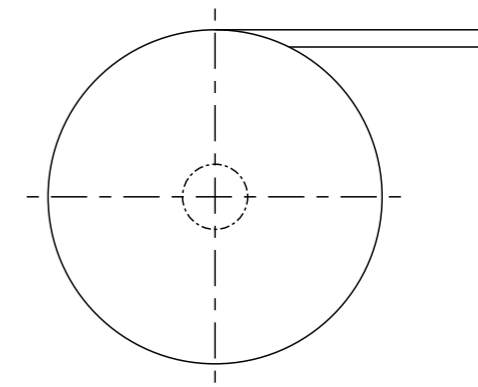
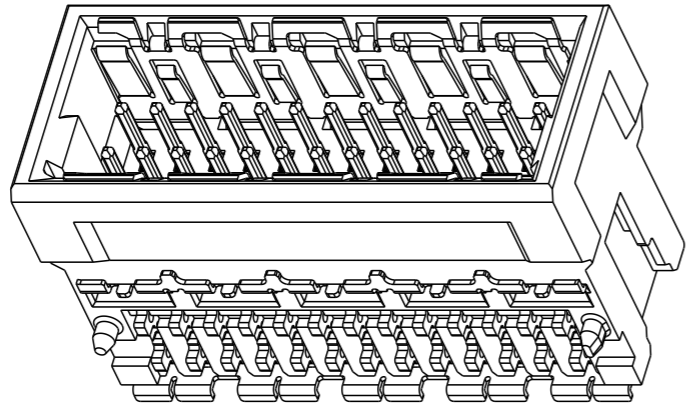


PRODUCT NO.  
10146153-2600RLF



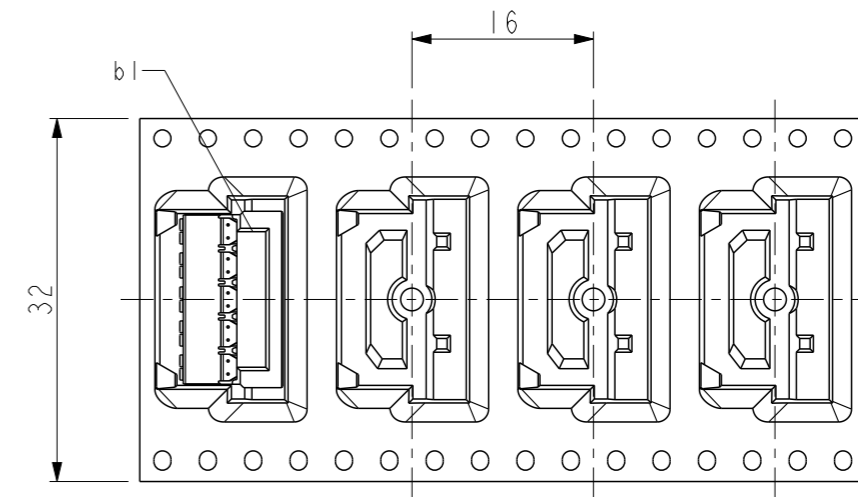
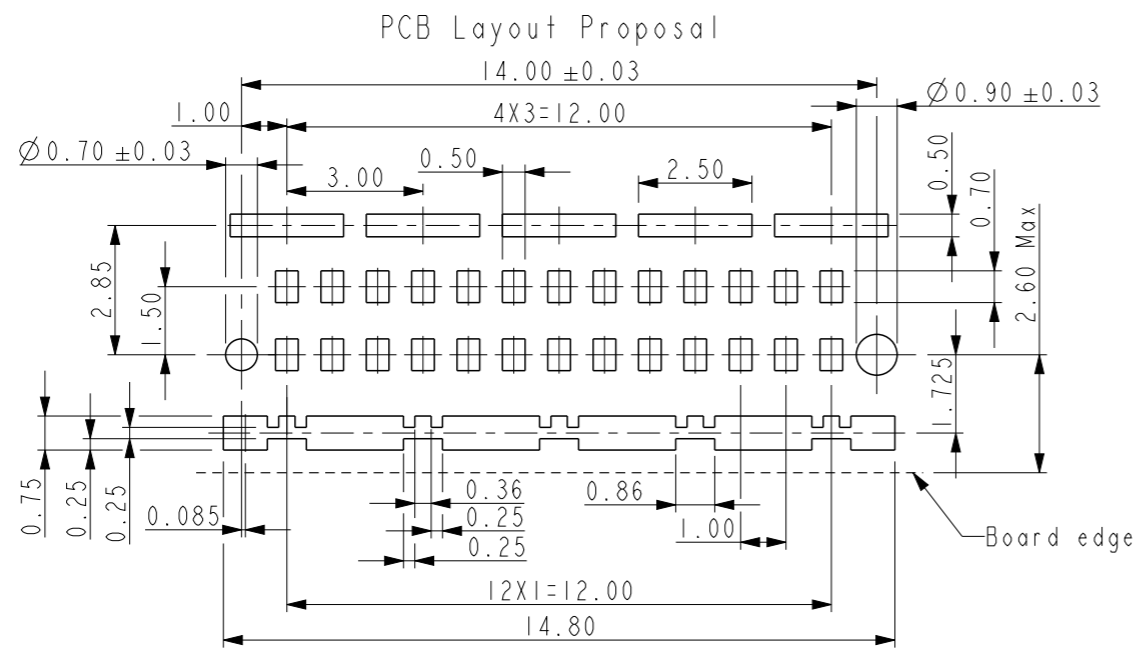
NOTES:  
1. MATERIAL:  
1.1 HOUSING: LCP 30%GF, E1301 BLACK, TICONA  
2.2 TERMINAL AND SHIELD: CUSN6  
2. PLATING: 1-3µM NI UNDER PLATING, 2-4µM SN ON SOLDER AREA, 0.65 µM PDNI, 0.10µM AU ON MATING AREA.  
3. COPLANARITY AREA OF TERMINATION 0.08MM MAX /1  
/1 INSPECTION LEVEL 1: CONTROL CHART REQUIRED  
PROOF OF PROCESS CAPABILITY OR 100% TEST IF PROCESS CAPABILITY IS NOT ACHIEVED  
/2 INSPECTION LEVEL 2 AND 3: CONTROL CHART REQUIRED  
PROOF OF MEAN VALUE, STANDARD DEVIATION AND MACHINE CAPABILITY  
/3 PROOF OF VALUES OR PROOF OF ATTRIBUTIVE TEST

spec ref	*	dr	Li-Qing Lei	2017/12/19	projection	mm	size	A3	scale	6:1
tolerance std	TOLERANCES UNLESS OTHERWISE SPECIFIED	eng	Li-Qing Lei	2021/04/22			ecn no	ELX-N-40515-1		
surface	linear	chr	-	app			Tim Yao	2021/04/22	rel level	Released
ASME Y14.5	angular	0°	±2°	<b>Amphenol FCI</b> title Male 90° SMD 26 pos Microspeed Series cat. no.		product family Product - Customer Drw	dwg no 10146153	rev C	sheet 1 of 2	



Package Description:  
 1. External diameter of Reel:  $\varnothing 330$   
 2. Leader 96mm/ Trailer 32mm  
 3. Packageing unit: 520pcs/Reel

Reel off direction  
 →



spec ref	*	dr	Li-Qing Lei	2017/12/19	projection	mm	size	A3	scale	6:1	
tolerance std	TOLERANCES UNLESS OTHERWISE SPECIFIED	eng	Li-Qing Lei	2021/04/22			ecn no	ELX-N-40515-1			
surface	linear	chr	-	-			rel level	Released			
ASME Y14.5	angular	appr	Tim Yao	2021/04/22	product family		rel no	10146153		rev	C
					cat. no.	Product - Customer Drw	sheet 2 of 2				