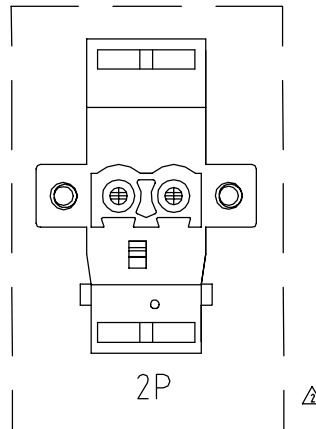
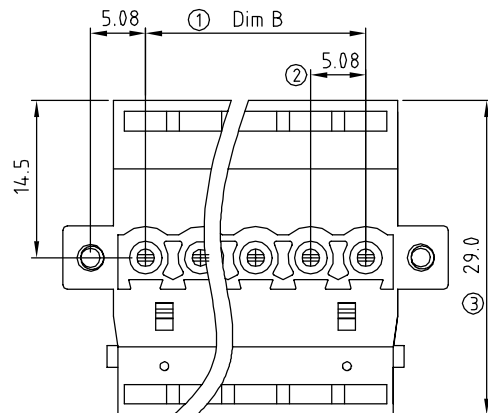


SIGN	DATE	DESCRIPTION	APPROVER
△	12/02'08	Flange screw changed from "-" to "+/-"	Tony
△	4/13'11	Add the 2P mark	Aaron

**THIS IS CAD DRAWING, DO NOT REVISE MANUALLY!!!**



**Material**

- Item a Clamp: Brass (CuZn) Ni plated
- Item b Terminal screw: Brass Zinc plating "-" slot type
- Item c Female contact: PhBz (CuSn) Tin plated
- Item d With flange screw: steel Zinc plating "+/-" slot type M2.5
- Item e Terminal (housing): Thermoplastic (UL94V-0)
- Item f Terminal (cover): Thermoplastic (UL94V-0)

**Electrical cULus**

- Voltage rating: 300VAC
- Current rating: 20A
- Wire range:
- Solid wire (AWG): 12-24
- Stranded wire (AWG): 12-24
- Torque: 4.3 Lb-In
- Screw: M3
- Wire strip length: 7-8mm
- Withstanding Voltage: 1.6KV
- Operating temperature: -40°C to +115°C
- Safety Approval:

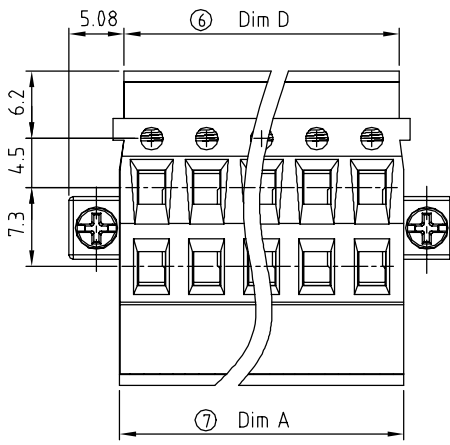
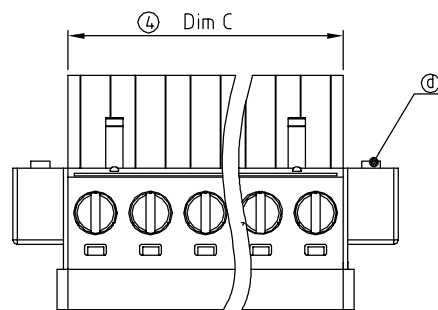
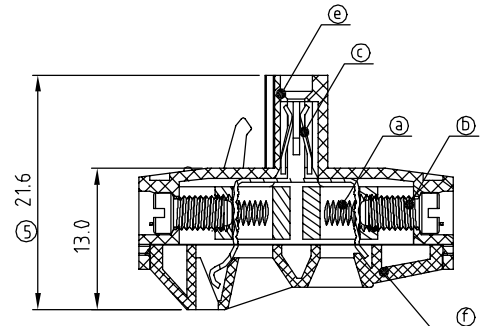


**VH xx 51 x 2 xxxx G**

No. OF POLES  
 02 2 CONTACTS  
 03 3 CONTACTS  
 ... ..  
 24 24 CONTACTS

Color  
 0 Black (RAL9005)  
 2 Red (RAL3001/D)  
 3 Orange (RAL2011/P)  
 4 Yellow (RAL1018/A)  
 5 Green (RAL6018/T)  
 6 Blue (RAL5015/A)  
 8 Grey (RAL7035/D)  
 9 White (RAL1102)  
 C Green (RAL6018/U)

G: Pb < 40000ppm  
 0000: "@ " Logo (Standard)  
 000A: "ANYTEK" Mark  
 Any special item by customer request. please contact sales department.



N = Number of poles  
 Dim A = (N-1) x 5.08 + 5.88  
 Dim B = (N-1) x 5.08  
 Dim C = N x 5.08  
 Dim D = N x 5.08

Poles	Dim A	Dim B
2p-6p	±0.15	±0.10
7p-12p	±0.20	±0.20
13p-18p	±0.30	±0.25
19p-24p	±0.40	±0.35

<h1>ANYTEK</h1>		<b>CUSTOMER COPY</b>	
ALL RIGHTS RESERVED. REPRODUCTION OR ISSUE TO THIRD PARTIES IN ANY FORM WHATSOEVER IS NOT PERMITTED WITHOUT WRITTEN AUTHORITY FROM THE PROPRIETOR. PROPERTY OF ANYTEK TECHNOLOGY CO., LTD			
TITLE: VH-5.08mm Series 2P-24P ( With flange )		DWG NO. 8VH0102	
PART NO. VHxx51x2xxxxG		CUST NO.	
APPROVED	CHECKED	DESIGNED	DRAWN
		Aaron 2011.04.13	Tony 2008.12.02
		Tolerance X. ±0.50 X.X ±0.30 X.XX ±0.10 X° ±1°	
		UNIT: mm SCALE: NONE SHEET: 01/01 REV.: D	