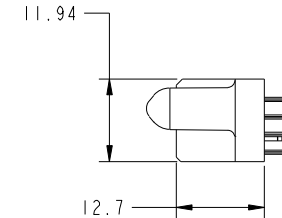
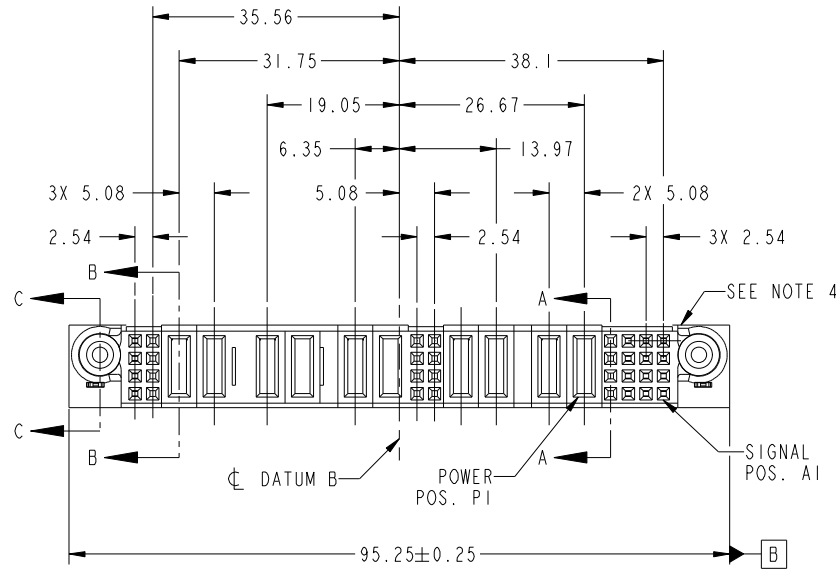


Tous droits strictement reserves. Reproduction ou communication a des tiers interdite sous quelque forme que ce soit sans autorisation écrite du propriétaire. Propriete de c FCI. Droits de reproduction FCI.



All rights strictly reserved. Reproduction or issue to third parties in any form whatever is not permitted without written authority from the proprietor. Property of FCI. Copyright FCI.

PRODUCT NO.	ROWS	POWER								POWER								SIG			
		E2	8	7	P10	P9	P8	P7	P6	P5	6	5	P4	P3	P2	P1	4	3	2	1	E1
51940-301-- NOTE: 3	D C B A		EX	EX	PA	X	PD	X	PD	X	XX	XX	PD	X	PA	X	XXXX	XXXX	XXXX	XXXX	



CODE	DIM "M" MATING LENGTH	CONTACT TYPE
E	[N/A]	SIGNAL
PA	[1.07]	POWER
PD	[2.34]	POWER
HA	[N/A]	HOLD-DOWN
X	OMITTED	OMITTED

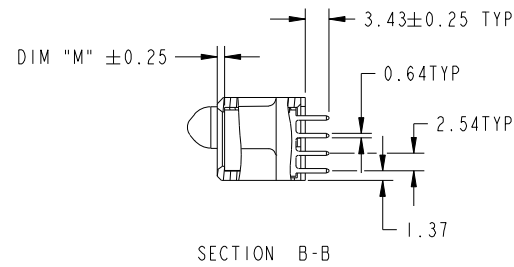
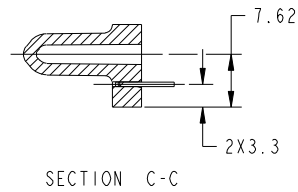
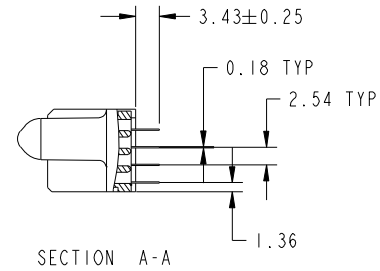
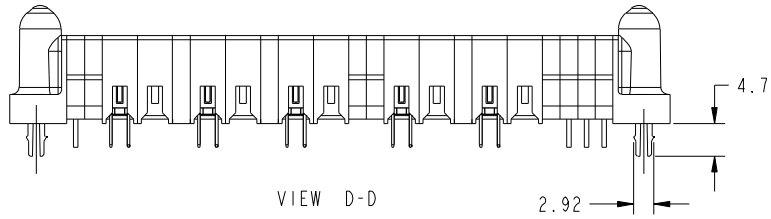
mat'l code 0				tolerances unless otherwise specified		CUSTOMER			
ltr	ecn no.	dr	date	linear	0.X ±0.3	COPY		www.fciconnect.com	
A	DG09-0188	JW	06/04/09		0.XX ±0.13	projection		title 16S + 4P + 8S + 6P + 8S VERTICAL SOLDER RECEPTACLE	
				angles	0.XXX ±0.051			product family PwrBlade code 213	
				dr	0° +2°	MIM		size dwg no 51940-301 sheet 1 of 4	
				enr	JULIA WANG 06/04/09	scale 1:1		cage code 22526	
				chr	JEROME CHEN 06/11/09				
				appd	GARY HSIEH 06/04/09				
					JOSEPH HSIA 06/04/09				
sheet index	revision sheet	A 1	A 2	A 3	A 4				

Tous droits strictement reserves. Reproduction ou communication a des tiers interdite sous quelque forme que ce soit sans autorisation écrite du propriétaire. Propriete de c FCI. Droits de reproduction FCI.

All rights strictly reserved. Reproduction or issue to third parties in any form whatever is not permitted without written authority from the proprietor. Property of FCI. Copyright FCI.



PRODUCT NUMBER
51940-301__
NOTE: 3



mat'l code				0	tolerances unless otherwise specified			CUSTOMER		 www.fciconnect.com	
ltr	ecn no.	dr	date	linear	0.X ±0.3			COPY		title 16S + 4P + 8S + 6P + 8S VERTICAL SOLDER RECEPTACLE	
A					0.XX ±0.13			projection			
					0.XXX ±0.051						
				angles	0° ±2°					product family PwrBlade code 213	
				dr	JULIA WANG	06/04/09		size dwg no A 51940-301		sheet 2 of 4	
				enr	JEROME CHEN	06/11/09		scale 1:1			
				chr	GARY HSIEH	06/04/09					
				appd	JOSEPH HSIA	06/04/09					
sheet index		revision sheet									

cage code 22526

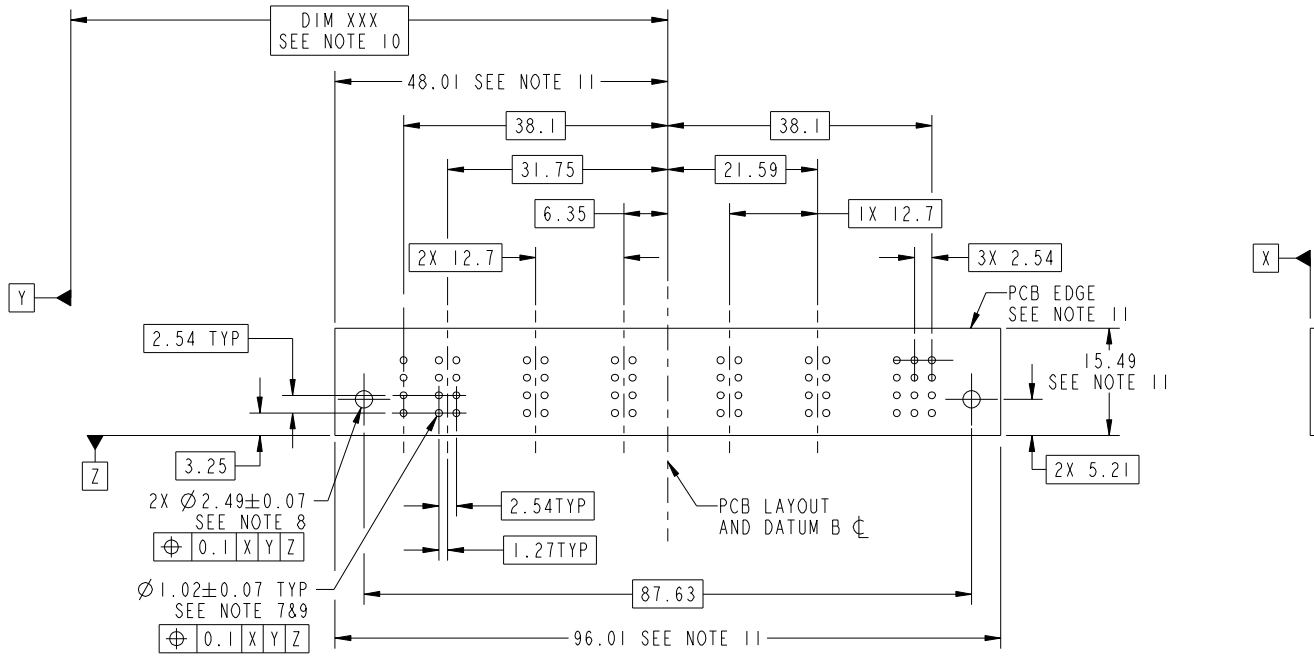
Pro/E

Tous droits strictement reserves. Reproduction ou communication a des tiers interdite sous quelque forme que ce soit sans autorisation écrite du propriétaire. Propriete de c FCI. Droits de reproduction FCI.



All rights strictly reserved. Reproduction or issue to third parties in any form whatever is not permitted without written authority from the proprietor. Property of FCI. Copyright FCI.

PRODUCT NUMBER
51940-301__
NOTE: 3



RECOMMENDED PCB LAYOUT

mat'l code				0	tolerances unless otherwise specified		CUSTOMER				www.fciconnect.com	
ltr	ecn no.	dr	date	linear	0.X ± 0.3		COPY			title		
A					0.XX ± 0.13		MIM			16S + 4P + 8S + 6P + 8S		
					0.XXX ± 0.051		1:1			VERTICAL SOLDER RECEPTACLE		
				angles	0° ± 2°		scale		product family		PwrBlade	code
				dr	JULIA WANG	06/04/09			size		dwg no	213
				enr	JEROME CHEN	06/11/09			A		51940-301	sheet
				chr	GARY HSIEH	06/04/09						3 of 4
				appd	JOSEPH HSIA	06/04/09						
sheet index		revision sheet										

cage code 22526

Pro/E

Tous droits strictement reserves. Reproduction ou communication a des tiers interdite sous quelque forme que ce soit sans autorisation écrite du propriétaire. Propriete de c FCI. Droits de reproduction FCI.



All rights strictly reserved. Reproduction or issue to third parties in any form whatever is not permitted without written authority from the proprietor. Property of FCI. Copyright FCI.

PRODUCT NUMBER
51940-301__
NOTE: 3

NOTES:

1. DIMENSIONS AND TOLERANCES ARE IN ACCORDANCE WITH ASME Y14.5M, 1994 UNLESS OTHERWISE SPECIFIED.

CONNECTOR NOTES:

- 2. HOUSING MATERIAL: UL 94 V-0 GLASS FILLED
HIGH-TEMP THERMOPLASTIC
POWER CONTACT MATERIAL: COPPER ALLOY
SIGNAL PIN MATERIAL: COPPER ALLOY
- 3. PLATING:
SEE ITEM 5 & 6 IN PRINT 10064183 FOR PLATING SPEC. OF 51940-301; 51940-301LF RESPECTIVELY.
- 4. MANUFACTURER'S NAME, P/N, AND DATE CODE TO APPEAR ON THIS SURFACE.
- 5. PRODUCT SPECIFICATION GS-12-149.
APPLICATION SPECIFICATION BUS-20-067.
- 6. PACKAGED IN TRAYS.

PCB NOTES:

- 7. ALL HOLE DIAMETERS ARE FINISHED HOLE SIZE.
- 8. MOUNTING HOLES, WHERE APPLICABLE, ARE UNPLATED.
- 9. $\varnothing 1.151 \pm 0.025$ DRILLED HOLES PLATED WITH
0.008 MIN SnPb OR Sn OVER 0.03
TO 0.08 Cu PLATING TO ACHIEVE
 $\varnothing 1.02 \pm .07$ HOLE.
- 10. "DIM XXX" TO BE DETERMINED BY THE CUSTOMER.
- 11. CONNECTOR KEEP-OUT ZONE.

mat'l code		0		tolerances unless otherwise specified		CUSTOMER		FCI		www.fciconnect.com	
ltr	ecr no.	dr	date	linear	0.X ± 0.3	COPY		projection	title		
A					0.XX ± 0.13	MIM			16S + 4P + 8S + 6P + 8S VERTICAL SOLDER RECEPTACLE		
				angles	0.XXX ± 0.051	scale			product family		code
				dr	JULIA WANG 06/04/09	1:1		A	PwrBlade		213
				enr	JEROME CHEN 06/11/09			size	dwg no		sheet
				chr	GARY HSIEH 06/04/09			51940-301		4 of 4	
				appd	JOSEPH HSIA 06/04/09						
sheet index	revision sheet										

cage code 22526

Pro/E