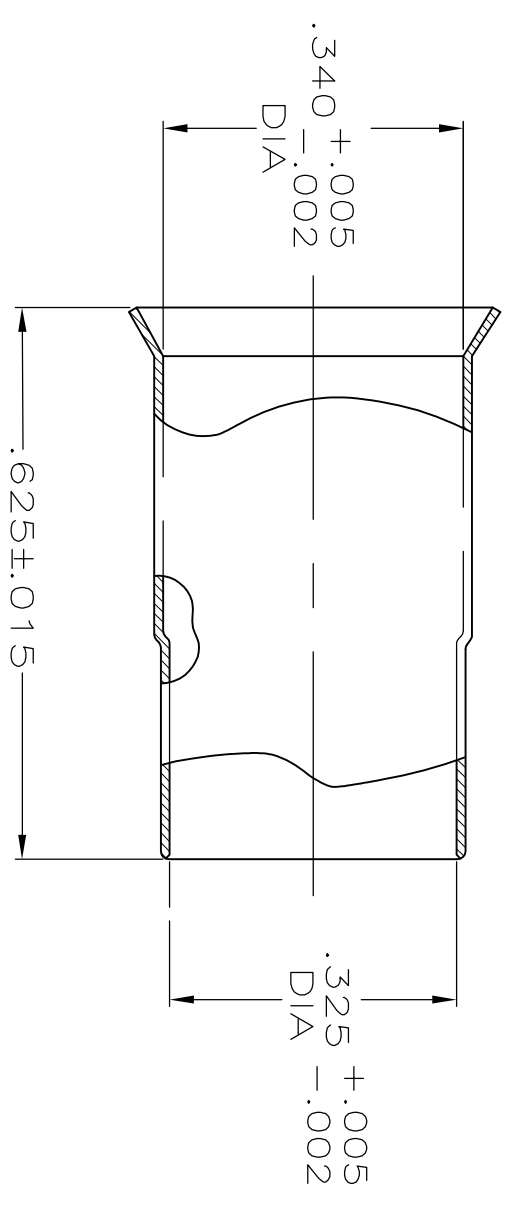


REVISIONS					
P	LTR	DESCRIPTION	DATE	DWN	APVD
G1		REVISED PER ECR-17-009545	04AUG2017	AS	RS



- 1 COPPER ALLOY.
- 2 TIN-LEAD PLATE PER ASTM-B-545, 2.54 μ m [.000100] MIN THICKNESS, WITH SUPPLEMENTAL ANTI FRETTING LUBRICANT.
- 3 TIN PLATE PER ASTM-B-545, 2.54 μ m [.000100] MIN THICKNESS, WITH SUPPLEMENTAL ANTI FRETTING LUBRICANT.

SUPERCEDED BY	FINISH	PART NUMBER
9-331256-0	3	9-331256-1
	3	9-331256-0
	-	1-331256-4
	1	1-331256-0
OBSOLETE	2	331256

THIS DRAWING IS A CONTROLLED DOCUMENT.

DIMENSIONS: INCHES	TOLERANCES UNLESS OTHERWISE SPECIFIED:	DWN M. SNEED 12OCT182	24SEP82
0 PLC ± -	1 PLC ± -	CHK D. SMITH 12OCT182	
1 PLC ± -	2 PLC ± -	APVD M. SNEED	
2 PLC ± -	3 PLC ± -	PRODUCT SPEC	
3 PLC ± -	4 PLC ± -	APPLICATION SPEC	
4 ANGLES ± -		WEIGHT 0.000000	

MATERIAL:

FINISH:

SIZE	CAGE CODE	DRAWING NO	RESTRICTED TO
A3	00779	331256	-

SCALE: 4:1 SHEET 1 OF 1 REV G1

CUSTOMER DRAWING

STE TE Connectivity
FERRULE, STEPDOWN