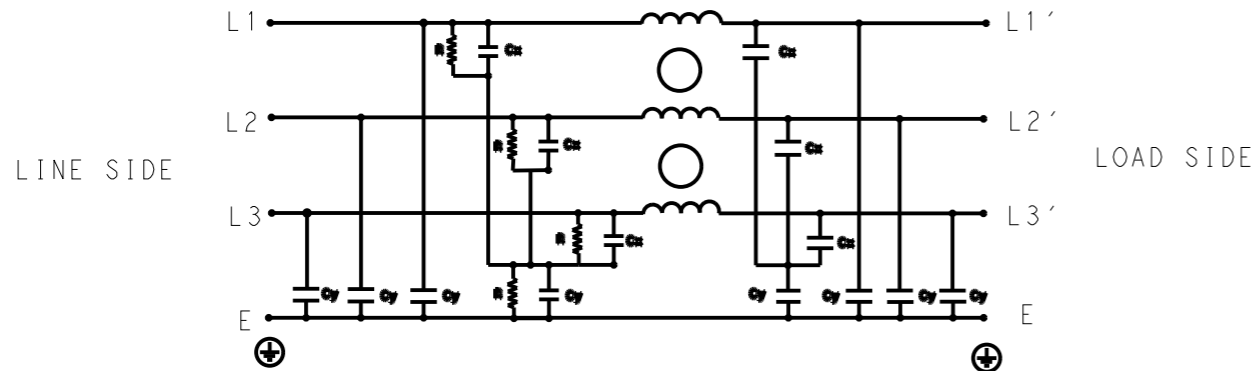


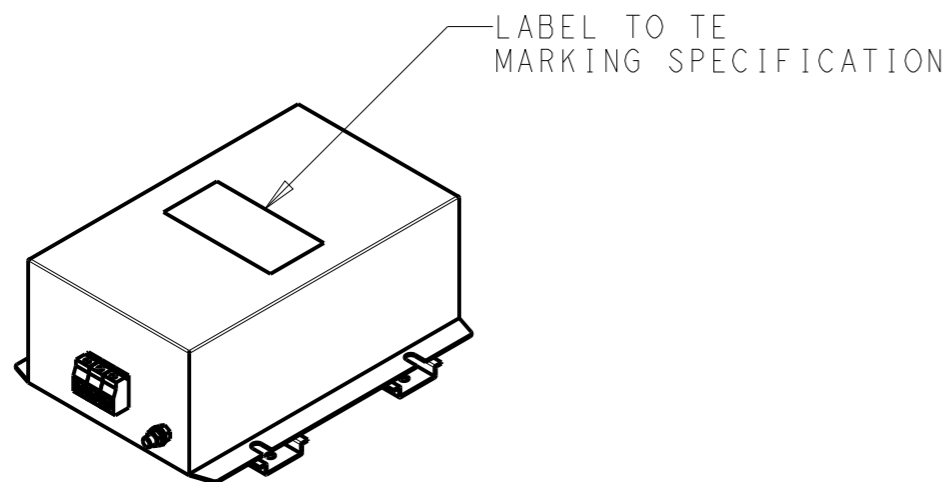
| P | LTR | DESCRIPTION | DATE | DWN | APVD |
|---|-----|-----------------|-----------|-----|------|
| | A | INITIAL RELEASE | 03APR2021 | BS | CB |
| | | | | | |
| | | | | | |



SCHEMATIC

TYPICAL INSERTION LOSS
COMMON MODE 50/50Ω; DIFFERENTIAL MODE 50/50Ω

| MHz | 0.01 | 0.05 | 0.15 | 0.5 | 1 | 3 | 5 | 10 | 30 |
|-----|------|------|------|-----|----|----|----|----|----|
| CM | 58 | 54 | 45 | 34 | 31 | 32 | 29 | 42 | 36 |
| DM | 56 | 51 | 48 | 42 | 40 | 48 | 46 | 52 | 54 |



SAFETY ORGANIZATIONS

THIS FILTER WILL BE FORMALLY RECOGNIZED, CERTIFIED OR APPROVED BY THE LISTED AGENCY. THEREFORE, ALL TEST/REQUIREMENTS SPECIFIED IN THE LATEST REVISION OF THE FOLLOWING AGENCY STANDARDS WILL BE MET:

UL APPROVED 50A 440V 50Hz/60Hz 40°C
CSA APPROVED 50A 440V 50Hz/60Hz 40°C

OPERATING SPECIFICATION

LINE CURRENT/VOLTAGE: 50A, 440VAC
LINE FREQUENCY: 50/60Hz

MAXIMUM LEAKAGE CURRENT: 18mA @ 230VAC, 50Hz

OPERATING AMBIENT TEMPERATURE RANGE @ RATED CURRENT: -25°C TO +40°C

IN AN AMBIENT, T_a, HIGHER THAN 40°C, THE MAXIMUM OPERATING CURRENT, I_o, IS AS FOLLOWS:

$$I_o = I_r \sqrt{\frac{85 - T_a}{45}}$$

RELIABILITY SPECIFICATIONS

STORAGE TEMPERATURE: -40°C TO +85°C
HUMIDITY: 21 DAYS @ 40°C AND 95% RH

TEST SPECIFICATIONS

INDUCTANCE, NOMINAL: 1.4mH

CAPACITANCE @ 1kHz

LINE TO GROUND, NOMINAL: 1.86μF
LINE TO LINE, NOMINAL: 5μF

DISCHARGE RESISTOR

L/G I.R. 1MΩ 1W
L/L I.R. 2MΩ 1W
L/N I.R. XXX
N/G I.R. XXX
IR (NO DISCHARGE RESISTOR) 20°C, 50% RH AND 100VDC, MIN: 6MΩ

RECOMMENDED RECEIVING INSPECITON HIPOT

LINE TO GROUND FOR 1 MINUTE: 2632VDC
LINE TO LINE FOR 1 MINUTE: 1892VDC

FILTER APPROVAL

THE BEST WAY TO SELECT AND QUALIFY A FILTER IS FOR YOUR ENGINEERING TO TEST THE UNIT IN YOUR EQUIPMENT.

| | | | | |
|--|--|-------------------------------|---|--|
| THIS DRAWING IS A CONTROLLED DOCUMENT. | | DWN 03APR2021 BAPAT SAHAS | | |
| DIMENSIONS: mm | | CHK 03APR2021 CHRIS BOLLE | | |
| TOLERANCES UNLESS OTHERWISE SPECIFIED: | | APVD 03APR2021 CHRIS BOLLE | NAME POWER LINE FILTER FOR DIN 35 RAIL INSTALLATION 50KEMS10AFPDHM | |
| 0 PLC ±- | | PRODUCT SPEC | SIZE | |
| 1 PLC ±0.5 | | APPLICATION SPEC | CAGE CODE | |
| 2 PLC ±0.40 | | WEIGHT | DRAWING NO | |
| 3 PLC ±0.130 | | CUSTOMER DRAWING | RESTRICTED TO | |
| 4 PLC ±0.0500 | | SCALE 1:4 | SHEET 1 OF 2 | |
| ANGLES ±- | | REV A | | |
| MATERIAL - | | | | |
| FINISH - | | | | |

REVISIONS

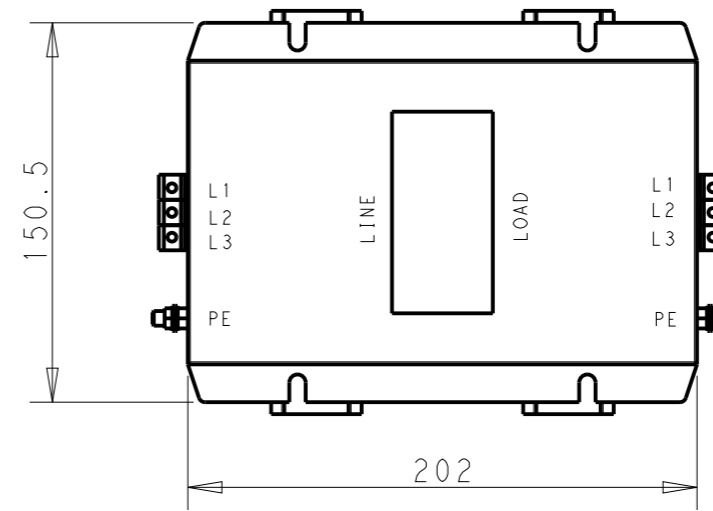
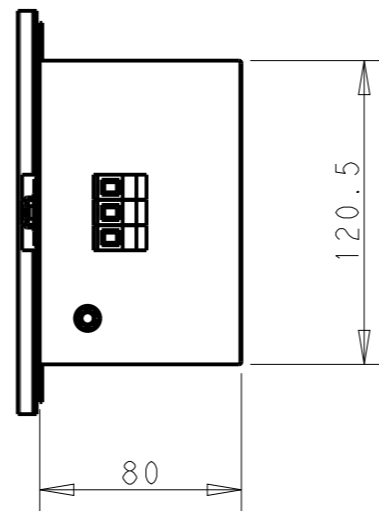
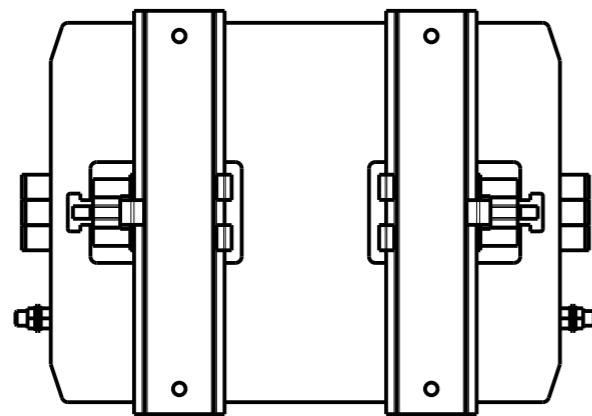
| P | LTR | DESCRIPTION | DATE | DWN | APVD |
|---|-----|-------------|------|-----|------|
| | | SEE SHEET 1 | | | |
| | | | | | |
| | | | | | |

NOTE 1 GROUND CONNECTION:
 FOR ELECTRICAL SAFETY AND FILTER PERFORMANCE
 UNIT MUST HAVE A GOOD GROUND CONNECTION.
 TORQUE OUTER TERMINAL SCREWS: 1.2Nm / 10.8 in.lbs
 TORQUE GROUND NUTS: 2.5-3Nm

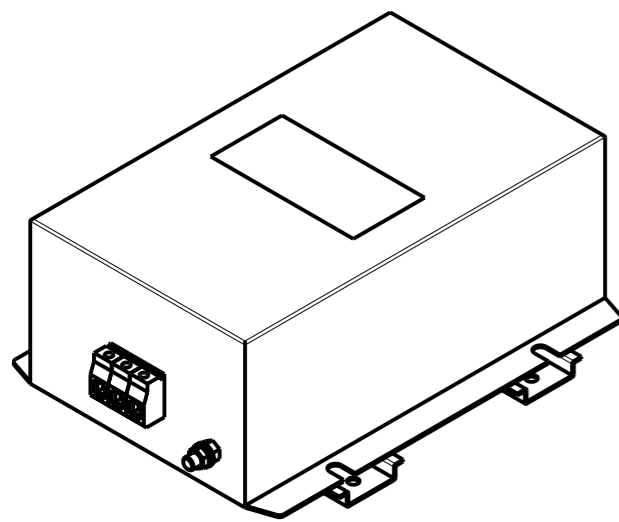
NOTE 2 INPUT OUTPUT CONNECTION TERMINAL
 AWG SIZE: 26-8 AWG
 WIRE SECTION: 10 mm²
 THREADED BOLT SIZE FOR GROUND: M6

NOTE 3 SUPPLIED WITH DIN RAIL BRACKET

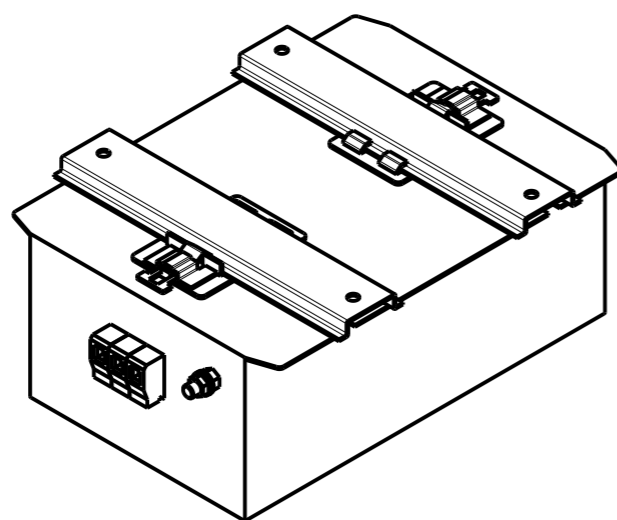
NOTE 4 DRAWINGS SHOWS DIN RAIL FOR
 REFERENCE ONLY



DIN RAIL CHANNEL DIN 35 BRACKET



FRONT SIDE



REAR SIDE

| | | | | | |
|--|--|--|-------------|------------------|--|
| THIS DRAWING IS A CONTROLLED DOCUMENT. | | DWN | 03APR2021 | | |
| | | CHK | 03APR2021 | | |
| | | APVD | 03APR2021 | | |
| | | NAME | CHRIS BOLLE | | |
| DIMENSIONS: | | TOLERANCES UNLESS OTHERWISE SPECIFIED: | | PRODUCT SPEC | |
| mm | | | | APPLICATION SPEC | |
| | | 0 PLC ±- | | WEIGHT | |
| | | 1 PLC ±0.5 | | - | |
| | | 2 PLC ±0.40 | | SCALE | |
| | | 3 PLC ±0.130 | | 1:3 | |
| | | 4 PLC ±0.0500 | | SHEET | |
| | | ANGLES ±- | | 2 OF 2 | |
| MATERIAL | | FINISH | | REV | |
| - | | - | | A | |
| | | CUSTOMER DRAWING | | RESTRICTED TO | |
| | | | | - | |
| | | SIZE | | CAGE CODE | |
| | | A3 | | 00779 | |
| | | DRAWING NO | | G-8-1609967-0 | |