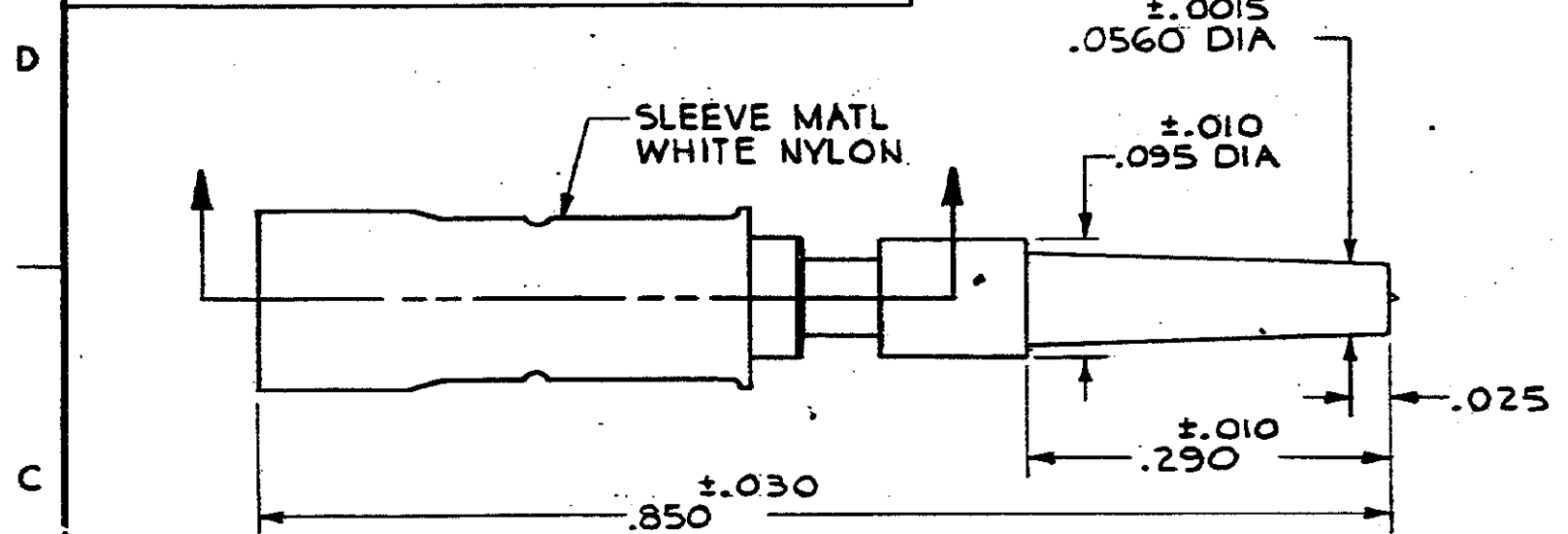


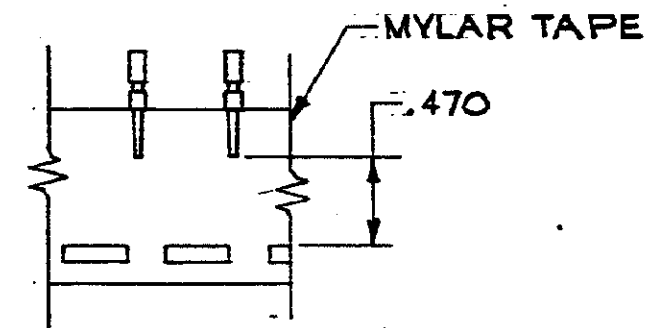
DRAWING MADE IN THIRD ANGLE PROJECTION

© COPYRIGHT 1973 BY AMP INCORPORATED, HARRISBURG, PA.
ALL INTERNATIONAL RIGHTS RESERVED. AMP INCORPORATED PRODUCTS
COVERED BY U. S. AND FOREIGN PATENTS AND/OR PATENTS PENDING.

REVISIONS						
P	F	ZONE	LTR	DESCRIPTION	DATE	APPROVED
✓			E	REV; ECN DF-0488	10/10/73	JG

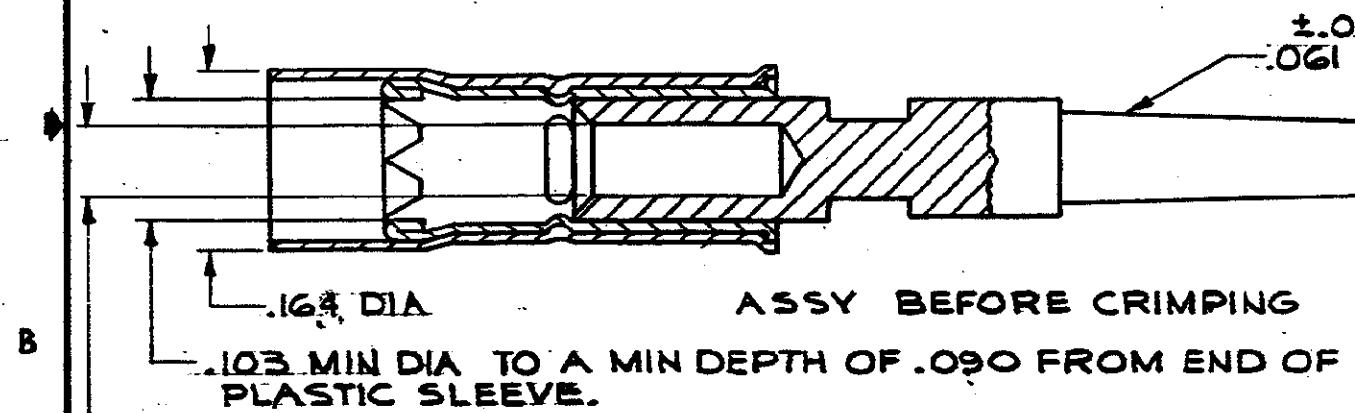


WIRE RANGE 20-18 AWG, INSULATION RANGE .060 - .100 DIA.



TAPE MOUNTED ASSY NO'S 42634-4, -5, -6

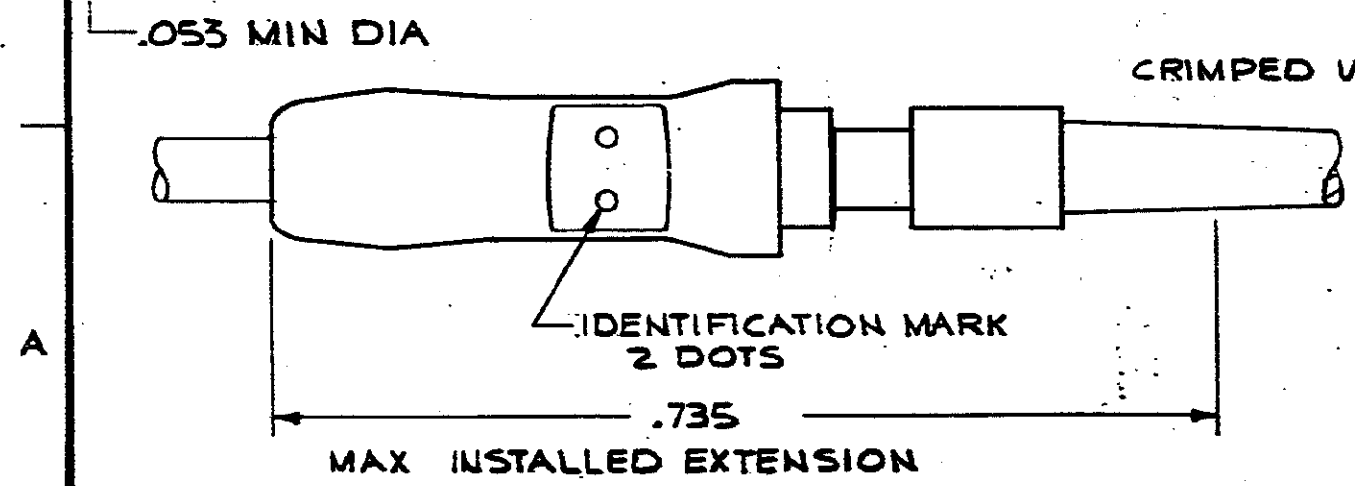
SCALE 1:1



ASSY BEFORE CRIMPING

TAPER PIN MATL BRASS

PART NO	DESCRIPTION
42634-6	AU.00003 OVER .00005 NI. ON TAPE
42634-5	SILVER.0002 THK ON TAPE
42634-4	BRIGHT TIN-LEAD, .0002 THK, ON TAPE
42634-3	GOLD.000030 OVER.000050 NI
42634-2	SILVER .0002 THK
42634-1	BRIGHT TIN-LEAD, .0002 THK



CRIMPED VERSION

IDENTIFICATION MARK 2 DOTS

MAX INSTALLED EXTENSION

UNLESS OTHERWISE SPECIFIED DIMENSIONS ARE IN INCHES. TOLERANCES ON: DECIMALS ±.015 ANGLES ±	CONTRACT NO	AMP INCORPORATED Harrisburg, Pa.	
	DR J. PENICA 6-11-73	NAME	TAPER PIN ASSY "53" SERIES P.I.D.G.
	CHK <i>Callahan</i> 6-12-73	SIZE	B
	APPO <i>AP</i> 6-12-73	CODE IDENT NO	00779
MATERIAL SEE CALLOUT	APPO	NUMBER	42634
FINISH	DSGN APPO	SCALE	8:1
	OTHER APPO	SHEET	