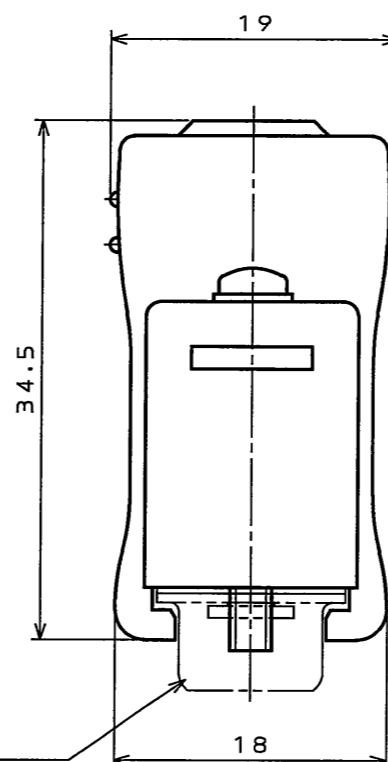
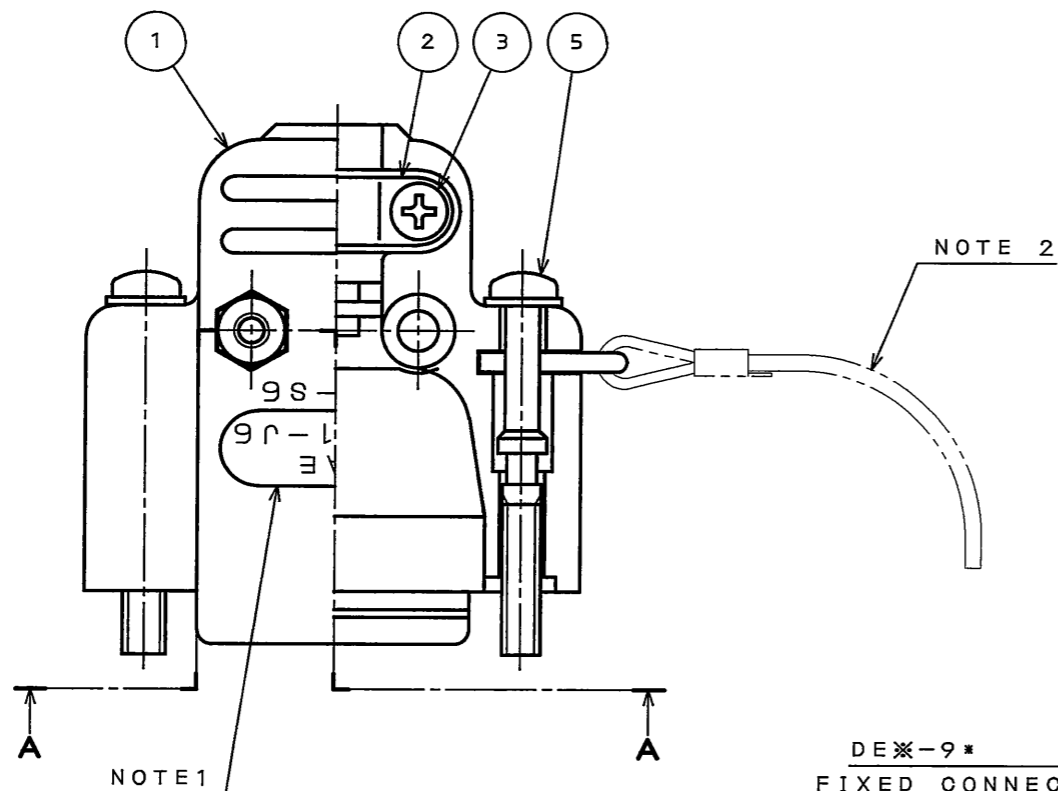


SJ102015  
(ON DRAWING) 台架図

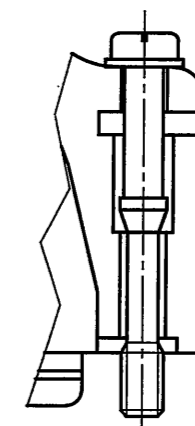
版数 REV.	年月日 DATE	CON NO.	変更内容 DESCRIPTION	製図 DR.	担当 CHK.	査閲 APPD.	承認 APPD.
2	10.Nov.2005	058570	CHANGE TO BILINGUAL		Y.TAKA01	A. Tago	Y. Kubota

注1. 図示の位置に社名及び品名略称を表示する。  
2. ダストキャップ取付ヒモ取付例。

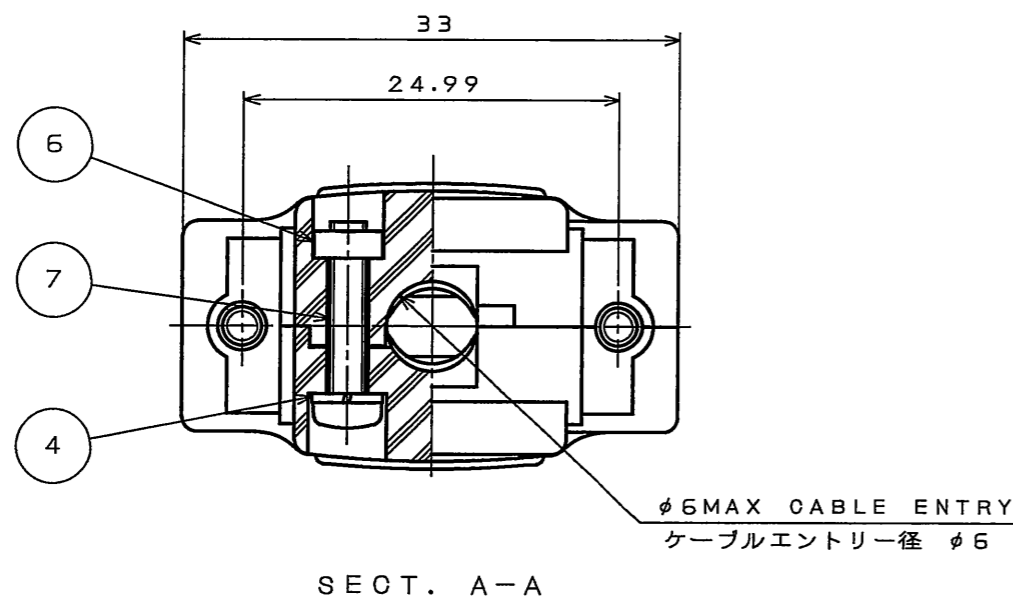
NOTE1. MARK THE COMPANY NAME AND ABBREVIATED PART NUMBER AT THE LOCATION SHOWN IN THE DRAWING.  
2. EXAMPLE OF DUST CAP MOUNTING CORD.



DE※-9\*  
FIXED CONNECTOR(REF.)  
コネクタ適用例(参考)



ANOTHER FORM OF SCREW LOCK  
嵌合固定ねじ別途形状



符号 NO.	名称 DESCRIPTION	個数 QTY.	材料 MATERIAL	仕上 FINISH	備考 REMARKS
7	CROSS PAN HEAD SCREW	2	STEEL	HEXAVALENT CHROMIUM FREE CHROMATE (TRIVALENT CHROMATE TREATMENT) ON ELECTROPLATED ZINC	M2.3×12
6	HEXAGON NUT	2	STEEL	HEXAVALENT CHROMIUM FREE CHROMATE (TRIVALENT CHROMATE TREATMENT) ON ELECTROPLATED ZINC	M2.3
5	SCREW LOCK SPRING ASSY	2	STEEL	HEXAVALENT CHROMIUM FREE CHROMATE (TRIVALENT CHROMATE TREATMENT) ON ELECTROPLATED ZINC	#4-40
4	SPRING WASHER	2	STEEL	HEXAVALENT CHROMIUM FREE CHROMATE (TRIVALENT CHROMATE TREATMENT) ON ELECTROPLATED ZINC	FOR M2.3
3	CROSS PAN HEAD SCREW	2	STEEL	HEXAVALENT CHROMIUM FREE CHROMATE (TRIVALENT CHROMATE TREATMENT) ON ELECTROPLATED ZINC	M2×7
2	CLAMP SADDLE	2	STEEL	HEXAVALENT CHROMIUM FREE CHROMATE (TRIVALENT CHROMATE TREATMENT) ON ELECTROPLATED ZINC	
1	MAIN HOOD	2	ABS RESIN		

仕様書 (SPECIFICATION)	第1版 (ORIGINAL DATE) 15.Sep.2005	尺度 (SCALE) 2:1	シリーズ (SERIES) D-sub	日本航空電子工業株式会社 JAPAN AVIATION ELECTRONICS INDUSTRY, LTD. 
公差 (GENERAL TOLERANCE)	製図 DR.	名称 (TITLE) DE-C1-J6-S6R		
寸法 (DIMENSION)	担当 CHK. Y.TAKA01	査閲 APPD.		
角度 (ANGLES)	承認 APPD. Y.KUBOTA	質量 (MASS)		
図面番号 (DRAWING NO.) SJ102015	版数 (REV.) 2			

DOF-0-212F(05.08)

