



Copyright FCJ



FCJconnect.com



4



4

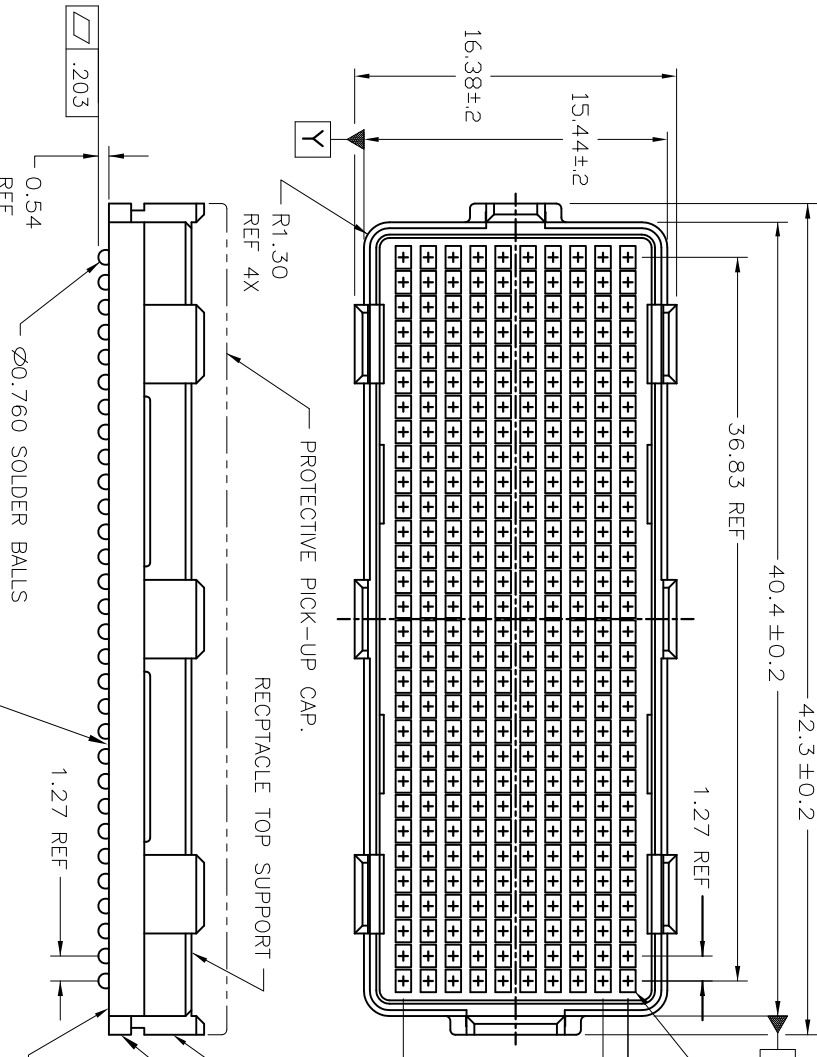
PRODUCT NUMBER

SEE TABLE-SHEET 2

1 | 2

3 |

4



CONTINUOUS OPEN KNOT LINE CRACKS (TRAVERSING THE ENTIRE BODY LENGTH OF THE CONNECTOR) WHICH CAUSE CRITICAL-TO-FUNCTION DIMENSIONAL CHANGES THAT AFFECT THE CONNECTORS MECHANICAL ALIGNMENT FEATURES ARE NOT PERMISSIBLE. SEE NOTE 4.

mat'l code	surface	tolerance	projection	product family
SEE NOTE 1	ASPE Y4.5	ASPE Y4.5		MEG-ARRAY

ltr	eqn no.	dfr	date <th>int</th> <th>angles</th> <th>gd</th> <th>scale</th> <th>title</th>	int	angles	gd	scale	title
H	V06-0560	LP	2006-07-08		X43		MM	5.5mm RECEPTACLE ASSEMBLY
J	V06-1173	LP	2006-02-01		XXX-13			10 X 30 = 300 POSITIONS
K	V11-0030	HTB	2011-06-05		XXX-051		Scale: 3:1	
L	V12-0030	SJ	2012-08-06					
M	V12-0042	DCM	2012-11-05					
N	V-21047	RWB	2015-06-09					
P	V-24318	RWB	2016-06-05					

sheet	revision	index	sheet	revision	index	sheet	revision	index
1	P	1	2	P	2	3	P	3
2	P	2	3	P	3	4	P	4

FCJ logo

Dwg no: 84502

Sheet 1 of 4

Size: A4

Product family: MEG-ARRAY

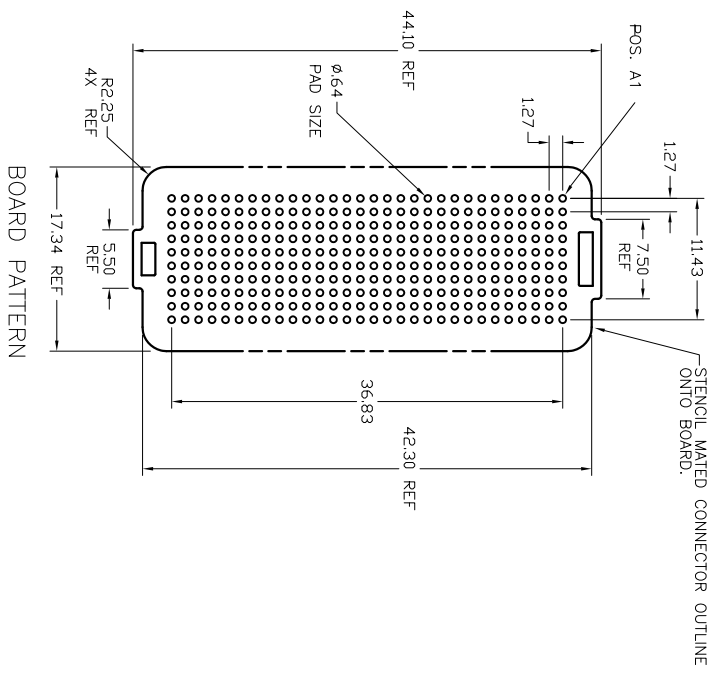
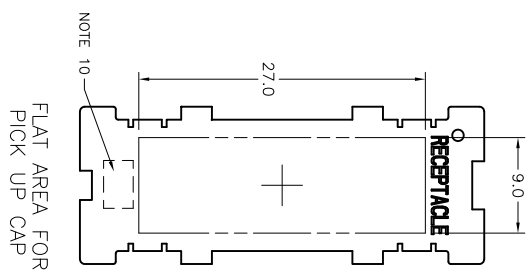
Title: 5.5mm RECEPTACLE ASSEMBLY

10 X 30 = 300 POSITIONS

Scale: 3:1

Customer Drawing

PRODUCT NUMBER	PICK-UP CAP (NATURAL OR BLACK COLOR)	CONTACT PLATING AND THICKNESS	SOLDER BALL	NOTES
84502-001	YES	15µ" (0.38µm) Au	SnPb	
84502-001LF	YES	15µ" (0.38µm) Au	LEAD FREE	5
84502-091	YES	15µ" (0.38µm) GXT	SnPb	
84502-091LF	YES	15µ" (0.38µm) GXT	LEAD FREE	5
84502-091BF	WITH VENT HOLES	15µ" (0.38µm) GXT	SnPb	
84502-091BLF	WITH VENT HOLES	15µ" (0.38µm) GXT	LEAD FREE	5
84502-101	YES	30µ" (0.76µm) Au	SnPb	
84502-101LF	YES	30µ" (0.76µm) Au	LEAD FREE	5
84502-191	YES	30µ" (0.76µm) GXT	SnPb	
84502-191LF	YES	30µ" (0.76µm) GXT	LEAD FREE	5
84502-201	YES	50µ" (1.27µm) Au SPECIAL	SnPb	6
84502-201LF	YES	50µ" (1.27µm) Au SPECIAL	LEAD FREE	5,6
84502-291	YES	50µ" (1.27µm) GXT SPECIAL	SnPb	6
84502-291LF	YES	50µ" (1.27µm) GXT SPECIAL	LEAD FREE	5,6
84502-A01	YES	30µ" (0.76µm)	SnPb	7
84502-A01LF	YES	30µ" (0.76µm)	LEAD FREE	5,7



mat'l code	SEE NOTE 1	date	surface	tolerance	projection	product family
lit	eqn no	df	ASPE Y4.5	ASPE Y4.5	MM	MEG-ARRAY
P			angles	X&3		
			dr	XXX.13		
			dr	XXX.051	Scale: 2:1	
			dr	D. WAUGHEN		5.5mm RECEPTACLE ASSEMBLY
			dr	D. HARPER		10 X 30 = 300 POSITIONS
			dr	D. HARPER		Sheet 2 of 4
			dr	D. HARPER		size
			dr	D. HARPER		A4
Sheet	revision		dr	D. HARPER		CUSTOMER Drawing
Index	Sheet					



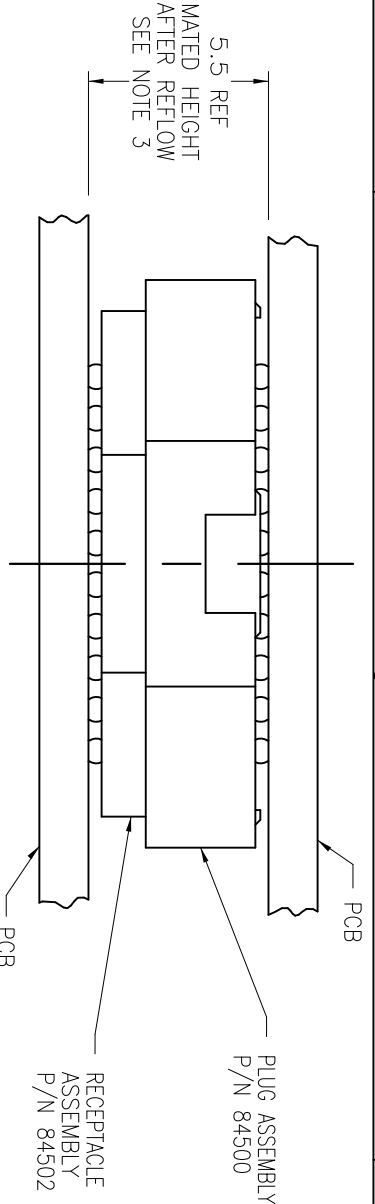
Copyright FCJ



FCJconnect.com



PRODUCT NUMBER  
SEE TABLE-SHEET 2



NOTES:

1. MATERIAL:  
HOUSING: LCP  
CONTACT: COPPER ALLOY

PLATING:

CONTACT: (SEE TABLE ON SHEET 2)  
SOLDER BALL: (SEE TABLE ON SHEET 2)  
EUTECTIC SnPb OR LEAD FREE  
95.5Sn/4Ag/0.5Cu

MATED HEIGHT AFTER REFLOW IS BASED ON  $\phi$ .64mm PAD (METAL-DEFINED) AND .13mm SOLDER PASTE STENCIL THICKNESS. SEE NOTE 3.  
END VIEW - MATED CONNECTORS

7. PLATING FOR INDICATED -2XX SERIES PRODUCT NUMBERS MEET THE REQUIREMENTS OF GR-1217-CORE, CENTRAL OFFICE ENVIRONMENT, (25 YEAR LIFE EXPECTANCY), AND INCLUDES SPECIAL CONTACT GEOMETRY.

8. 84502-A01 AND -A01LF ARE CUSTOMER SPECIALS.

9. CURRENT COMPANY LOGO TO BE VISIBLE IN APPROXIMATE AREA SHOWN.

10. A  $\nabla$  SYMBOL WILL BE NEXT TO ANY DIMENSION, NEW VIEW OR NOTE WHICH HAS BEEN MODIFIED WITH THE CURRENT DRAWING REVISION

- 2. SOLDER BALLS WILL NOT BE PERFECT SPHERICAL SHAPE DUE TO REFLOW ATTACHMENT.
- 3. MATED HEIGHT EFFECTED BY CUSTOMER'S PCB PAD SIZE, PLATING, SOLDER REFLOW PROFILE, & SOLDER PASTE.
- 4. KNOT LINE: SLIGHT VISIBLE MARKS (USUALLY A LINE) INDICATING THE DIRECTION AND MEETING POINT OF PLASTIC RESIN FLOW FRONTS TRAVELING AROUND ANY OBSTRUCTIONS TO THE RESIN FLOW VIA THE REQUIRED MOLD TOOLING.
- 5. FOR PROPER APPLICATION FOLLOW FCJ APPLICATION SPECIFICATION GS-20-033 LEAD FREE SOLDER BALLS WILL NOT SOLDER PROPERLY IN A LEADED SOLDER PROCESS DUE TO A HIGHER REFLOW TEMPERATURE. LEAD FREE PRODUCT IS THEREFORE NOT BACKWARDS COMPATIBLE WITH LEADED OR SOME SOLDERING APPLICATIONS. REFERENCE FCJ APPLICATION SPECIFICATION
- 6. THIS PRODUCT MEETS EUROPEAN UNION DIRECTIVES AND OTHER COUNTRY REGULATIONS AS DESCRIBED IN GS-47-0004 PRODUCT MEETING THIS DIRECTIVE IS IDENTIFIED IN THE LOT CODE NUMBER MARKED ON EACH PART BY HAVING AN "X" IN THE SEVENTH CHARACTER POSITION.

mat'l code	SEE NOTE 1	surface	tolerance	projection	product family
litr	ecn no	dfr	date	ASPE Y14.5	ASPE Y14.5
P				angles	X-3
				dr	XXX.13
				dr	XXX.051
				dr	D. WAUGHEN 999-02-23
				dr	D. HARPER 999-02-23
				dr	D. HARPER 999-02-23
				dr	D. HARPER 999-02-23
sheet	revision				
index	sheet				



title  
5.5mm RECEPTACLE ASSEMBLY  
10 X 30 = 300 POSITIONS  
sheet 3 of 4 size  
84502  
CUSTOMER Drawing  
A4

form: A4mmX1c

1

2

3

4

B

A

A

B



Copyright FCJ



FCJ  
FCJconnect.com



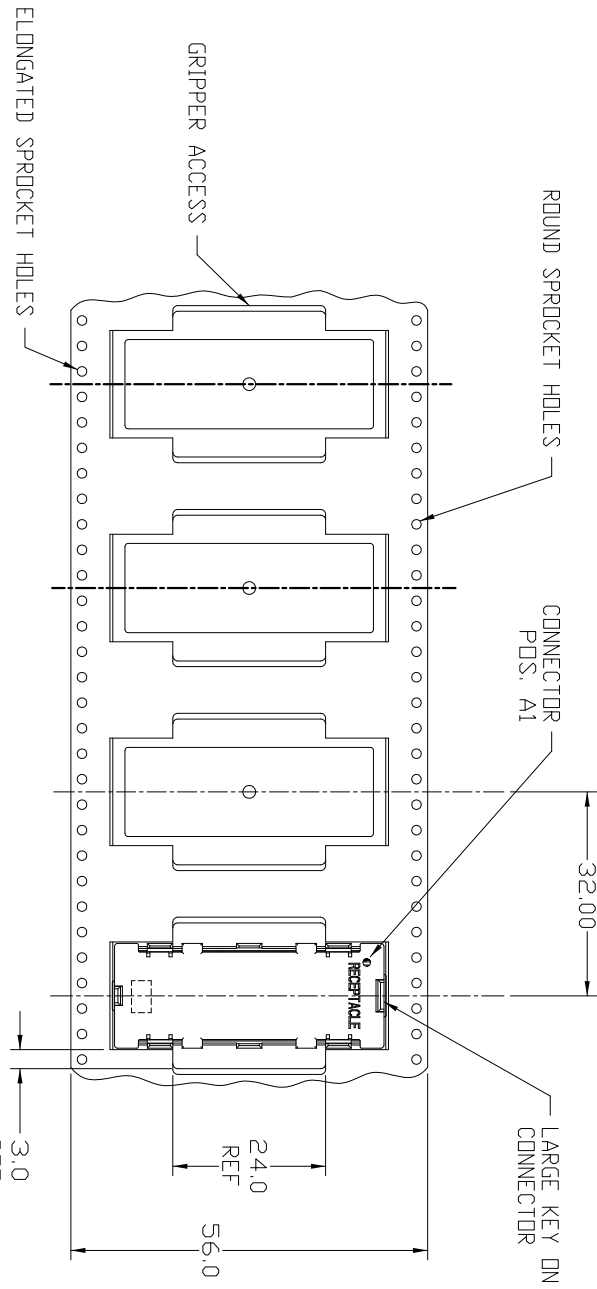
3 |



4

PRODUCT NUMBER  
SEE TABLE-SHEET 2

1 | 2



TAPE & REEL PACKAGING  
PER EIA 481-3  
SCALE 1:1

mat'l code	SEE NOTE 1	surface	ASME Y14.5	tolerance	ASME Y14.5	projection	product family
ltr	ecm no	dr	date	ASME Y14.5	tolerances unless otherwise specified	MM	MEG-ARRAY
P				angles	XXX.X	Scale 1:1	5.5mm RECEPTACLE ASSEMBLY
				dr	D. WAUGHEN 1999-03-11		10 X 30 = 300 POSITIONS
				plng	D. HARPER 1999-03-11		Sheet 4 of 4
				clm	D. HARPER 1999-03-11		Size
				apdd	D. HARPER 1999-03-11		A4
Sheet	revision						CUSTOMER Drawing
Index	Sheet						

form: A4mmX16

1 |

2 |

3 |

4