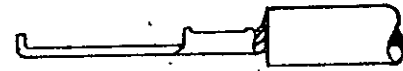
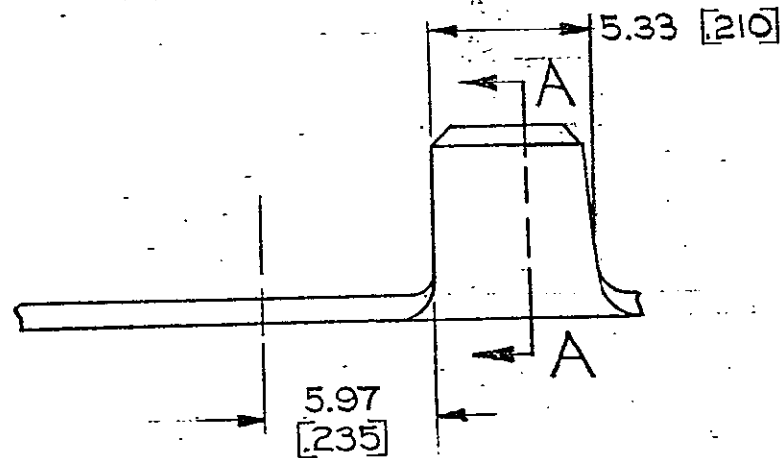
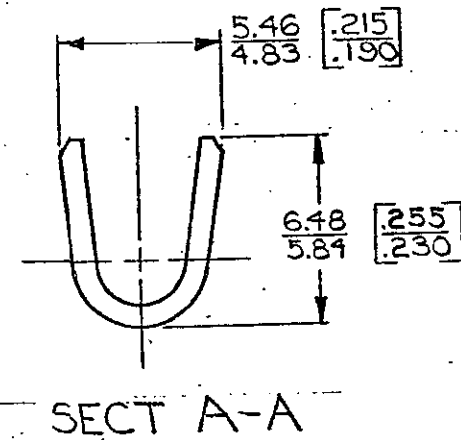
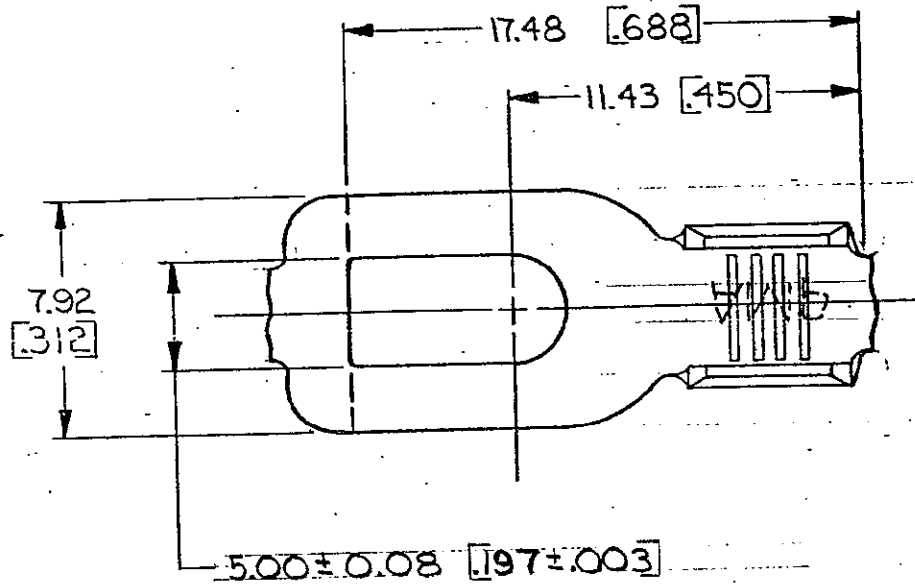


DRAWING MADE IN THIRD ANGLE PROJECTION

© COPYRIGHT 1968 BY AMP INCORPORATED, HARRISBURG, PA.  
 ALL INTERNATIONAL RIGHTS RESERVED. AMP INCORPORATED PRODUCTS  
 COVERED BY U. S. AND FOREIGN PATENTS AND/OR PATENTS PENDING.



FLANGED IN  
 APPLICATOR



		REVISIONS			LOC	DIST
P	F	ZONE	LTR	DESCRIPTION	DATE	APPROVED
✓	✓		C	REDRAWN & REVISED A-3943 A.M.	1/5/78	
✓	✓		D	REVISED AF 0169	8/15/84	SP/GY
✓	✓		E	REV PER AF-6785	7/2/90	PMF/GY
✓	✓		F	REV PER DL10-0090-97	20/ECH	PMF/GY

- 1. SUFFIX LETTER MUST BE USED ONLY WHEN ORDERING APPLICATOR TOOLING
- 2. CONTINUOUS STRIP ON REELS.
- 3. DIMENSIONS IN BRACKETS ARE IN INCHES

**METRIC**

#10	3.0-5.0 mm <sup>2</sup> [2-10]	NONE	0.76 [030] BRASS	40891-A 40891
STUD SIZE	WIRE RANGE	FINISH	MATERIAL	PART NO
UNLESS OTHERWISE SPECIFIED DIMENSIONS ARE IN mm TOLERANCES ON: DECIMALS ±0.38 [015] ANGLES ±1°		CONTRACT NO. DR <i>A. Magano</i> 5/1/78 CHK <i>Wayne D. Davis</i> 7-20-78 APPR <i>R. P. Frantz</i> 8-10-78 APPR <i>E. Flicks</i> 8-10-78		AMP INCORPORATED Harrisburg, Pa.
MATERIAL SEE TABLE	FINISH SEE TABLE	NAME SPADE		
OTHER APPD		SIZE <b>B</b>	CODE IDENT NO 00779	DRAWING NO 40891
		SCALE	SHEET	

CUSTOMER DRAWING