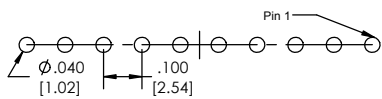
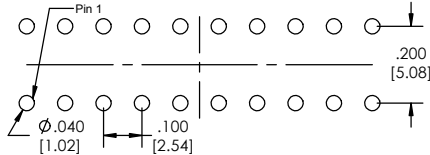


Recommended P.C. Board Layout  
SCALE 4:1

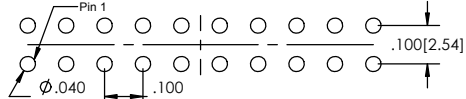
SINGLE ROW



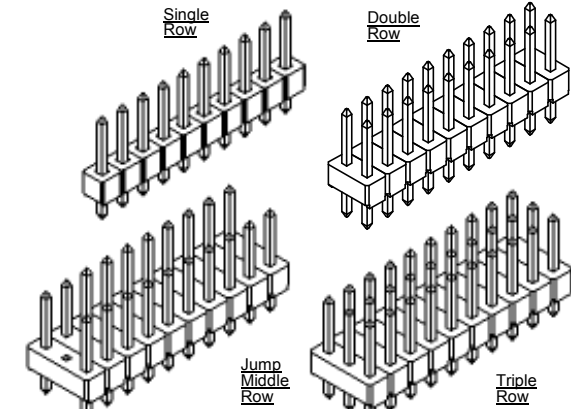
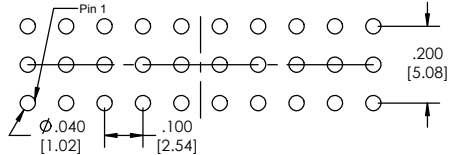
JUMP MIDDLE ROW



DOUBLE ROW



TRIPLE ROW



TSHC-1 [XX] - [X] - [XXX] - [XX] - [XXX] - [XX] - [XX] - [XXX] - [X] - [LF]  
(A) (B) (C) (D) (E) (F) (G) (H) (I) (J)

- A. Pins Per Row - 1 through 40
- B. Row Specification
  - S= Single
  - D= Double
  - J= Jump Middle
  - T= Triple
- C. Desired Tail Length
  - If Tail is not specified then
  - Tail(T) = Overall Length(L) - Post(P) - .100[2.54]
- D. Pin Options
  - See box below
- E. Desired Post Height
  - Please specify
  - e.g. .230 = 230
- F. Plating Options
  - See Plating Options below
- G. Lock Tight "LT" (Optional)
  - Leave blank if not needed
  - LT= With
- H. Polarized Position
  - Leave blank if not needed
  - If required, specify empty pin position
  - e.g. 012 for Pin 12
- I. Every Other Pin (Optional)
  - Leave blank if not required
- J. Lead Free

Mates With:  
BCSS SMCB  
BSSH SSHQ  
BSSHC SSHQR  
BSSQ SSHR  
BSSQC SSSH  
BSSQM SSSHSM  
LBCSS  
LSWSS

| Plating options |   |
|-----------------|---|
| G               | -10µ Gold on Contact Area/ Flash on Tail        |
| T               | -Matte Tin all Over                             |
| GT              | -10µ Gold on Contact Area/ Matte Tin on Tail    |
| H               | -30µ Gold on Contact Area/ Matte Tin on Tail    |
| F               | -Gold Flash over Entire Pin                     |
| FT              | - Gold Flash on Contact Area/ Matte Tin on Tail |

| Post Height Options |                  |        |
|---------------------|------------------|--------|
| Overall Length      | Max. Post Height | Option |
| 0.300[7.62]         | 0.110[2.79]      | 02     |
| 0.335[8.51]         | 0.145[3.68]      | 03     |
| 0.430[10.92]        | 0.240[6.10]      | 06     |
| 0.445[11.30]        | 0.255[6.48]      | 08     |
| 0.456[11.58]        | 0.266[6.76]      | 10     |
| 0.480[12.19]        | 0.290[7.37]      | 11     |
| 0.530[13.46]        | 0.340[8.64]      | 14     |
| 0.630[16.00]        | 0.440[11.18]     | 16     |
| 0.730[18.54]        | 0.540[13.72]     | 20     |
| 0.830[21.08]        | 0.640[16.26]     | 22     |
| 0.930[23.62]        | 0.740[18.80]     | 24     |
| 1.030[26.16]        | 0.840[21.34]     | 26     |
| 1.130[28.70]        | 0.940[23.88]     | 28     |
| 1.230[31.24]        | 1.040[26.42]     | 30     |
| 1.330[33.78]        | 1.140[28.96]     | 32     |
| 1.430[36.32]        | 1.240[31.50]     | 34     |
| 1.530[38.86]        | 1.340[34.04]     | 36     |

Specifications:  
Current Rating: 3.0 Ampere  
Insulation Resistance: 1000M Ohms Min.  
Dielectric Withstanding: 600V AC  
Contact Resistance: 20M Ohms Max.  
Operation Temperature: -40°C to +105°C  
Max. Process Temperature  
Peak: 260°C up to 20 secs.  
Process: 230°C up to 60 secs.  
Wave: 260°C up to 6 secs.  
Manual Solder: 350°C up to 5 secs.

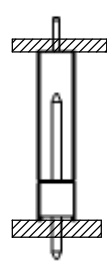
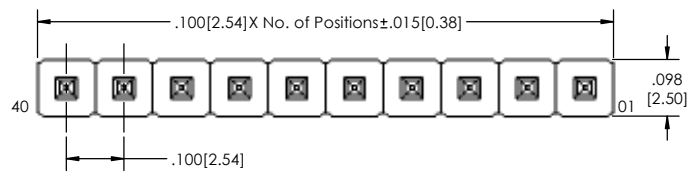
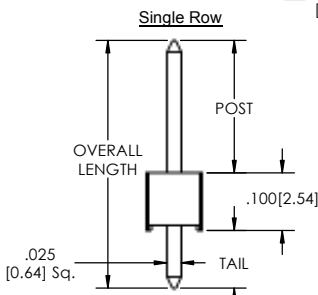
Materials:  
Contact Material: Phosphor Bronze  
Insulator Material: Nylon 6T  
Plating: Au or Sn over 50µ" (1.27) Ni  
Tails may be clipped to achieve specific dimensions.

Products cut to specific sizes are uncancellable/ nonreturnable.  
Parts are subject to change without notice.

|                             |  |   |  |               |  |
|-----------------------------|--|---|--|---------------|--|
| UNLESS OTHERWISE SPECIFIED: |  | NAME  |  | DATE          |  |
| DRAWN                       |  | EOW   |  | 01/08/14      |  |
| CHECKED                     |  | GWE   |  | 01/08/14      |  |
| ENG APPR.                   |  |   |  |               |  |
| MFG APPR.                   |  |   |  |               |  |
| ADDRESS:                    |  | 2533 Centennial Blvd.<br>Jeffersonville, IN 47130<br>Phone: 812-670-4174<br>Fax: 812-670-4175<br>E-Mail: ml@mlelectronics.com |  |               |  |
| DIMENSIONS ARE IN INCHES    |  |   |  |               |  |
| TOLERANCES:                 |  |   |  |               |  |
| ONE DECIMALS ±.100          |  |   |  |               |  |
| TWO DECIMAL ±.010           |  |   |  |               |  |
| THREE DECIMAL ±.005         |  | TITLE: TSHC-1SERIES   |  | SIZE DWG. NO. |  |
| FOUR DECIMAL ±.002          |  | C   |  | REV B         |  |
| NEXT ASSY USED ON           |  | FINISH  |  | SCALE: 6:1    |  |
| APPLICATION                 |  | DO NOT SCALE DRAWING  |  | SHEET 1 OF 1  |  |



PROPRIETARY AND CONFIDENTIAL  
THE INFORMATION CONTAINED IN THIS DRAWING IS THE SOLE PROPERTY OF Major League Electronics. ANY REPRODUCTION IN PART OR AS A WHOLE WITHOUT THE WRITTEN PERMISSION OF Major League Electronics IS PROHIBITED.



APPLICATION

