

4

3

2

1


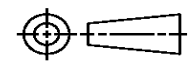
THIS DRAWING IS UNPUBLISHED. RELEASED FOR PUBLICATION
© COPYRIGHT ALL RIGHTS RESERVED.

LOC	DIST	REVISIONS			
P	LTR	DESCRIPTION	DATE	DWN	APVD
	A1	ECR-16-009824	27JUL2016	GK	SD

REPLACED BY OCEAN STYLE APPLICATOR PART NUMBER 2150675-1

FOR REPLACEMENT PARTS FOR APPLICATOR 1339584
REFER TO ADDITIONAL PAGE(S). SPARE PARTS KIT (IF LISTED)
WILL REMAIN AVAILABLE.

THE REPLACEMENT OCEAN STYLE APPLICATOR HAS THE
SAME TERMINATOR/PRESS INTERFACE AS APPLICATOR
1339584

THIS DRAWING IS A CONTROLLED DOCUMENT.		DWN	GOPALAKRISHNA HV		 TE Connectivity
DIMENSIONS:		CHK	GOPALAKRISHNA HV		
		TOLERANCES UNLESS OTHERWISE SPECIFIED:		NAME	
		0 PLC ±		END FEED HD-I APPLICATOR	
		1 PLC ±		PRODUCT SPEC	
		2 PLC ±		APPLICATION SPEC	
		3 PLC ±		SIZE	
		4 PLC ±		CAGE CODE	
		ANGLES ±		DRAWING NO	
MATERIAL		FINISH		RESTRICTED TO	
				A3	
				C= 1339584	
				CUSTOMER DRAWING	
				SCALE	
				SHEET 1 OF 2	
				REV A1	

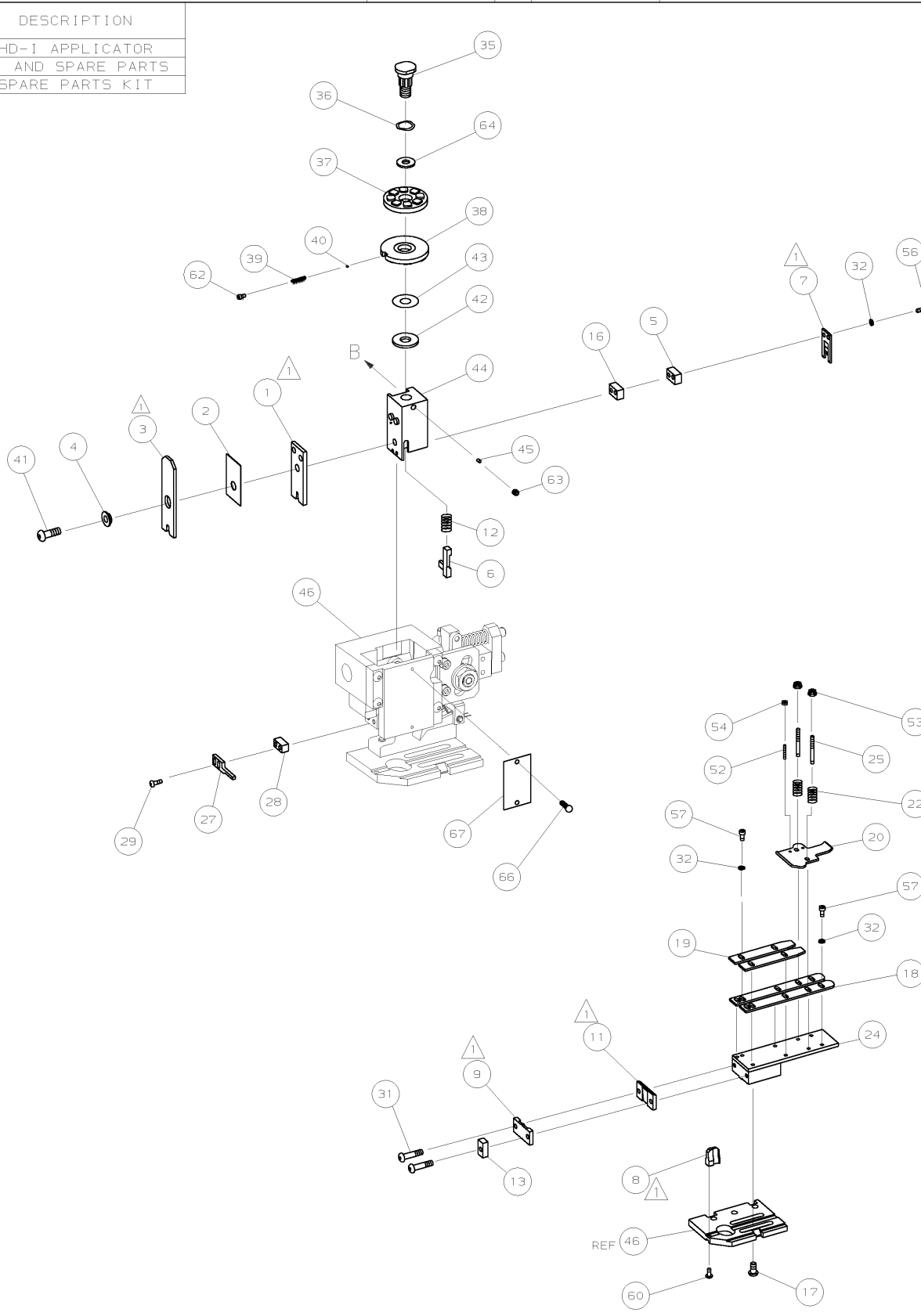
DRAWING MADE IN THIRD ANGLE PROJECTION

1339584 ↩ 1339584

/home/eb003420/edmod

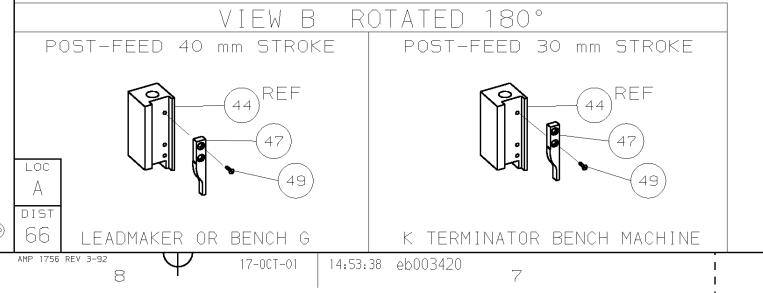
PART NUMBER	REV	FIRST USED	TERMINATOR	FEED TYPE	DESCRIPTION
1339584-1	A	-	BENCH & LEADMAKER	MECH POST FEED	HD-I APPLICATOR
7-1339584-1	A	-	BENCH & LEADMAKER	MECH POST FEED	-1 AND SPARE PARTS
7-1339584-7	A	-	-	-	SPARE PARTS KIT

CRIMP DATA AMP TERMINAL AMP CRIMP SPECS ^A			
TERMINAL NAME: SHAKE PROOF RING TONGUE			
CRIMP	SIZE	TYPE	RANGE
WIRE	2.29 [0.090 IN]	F	20-16 AWG or 0.50-1.00mm ²
INSUL	3.56 [0.140 IN]	F	2.54-2.90 [0.100-.114 IN]
WIRE STRIP LENGTH	APPL INSTRUCTION		
4.80-5.60 [0.189-.220 IN]	408-8323		
TERMINAL			FEED
APPL SPEC 114-3118			18.42 [0.725 IN]
TERMINALS APPLIED			
154672	-	-	-
152301	-	-	-
151382	-	-	-
-	-	-	-
-	-	-	-
-	-	-	-
-	-	-	-
WIRE SIZE	CRIMP HEIGHT	PIN PN AND LENGTH [IN]	
mm ² AWG			
16 AWG	1.76 ±0.05 [0.069 ±.002 IN]	8-354778-9 [0.2940]	
1.00mm ²	1.66 ±0.05 [0.065 ±.002 IN]	9-354778-7 [0.2980]	
18 AWG	1.59 ±0.05 [0.063 ±.002 IN]	354779-2 [0.3000]	
0.75mm ²	1.58 ±0.05 [0.062 ±.002 IN]	354779-4 [0.3010]	
20 AWG	1.50 ±0.05 [0.059 ±.002 IN]	1-354779-0 [0.3040]	
0.50mm ²	1.49 ±0.05 [0.059 ±.002 IN]	1-354779-0 [0.3040]	
-	-	-	-
-	-	-	-
-	-	-	-
-	-	-	-
-	-	-	-
-	-	-	-
-	-	-	-
-	-	-	-



QTY	REV	PART NO	DESCRIPTION	ITEM NO	
-	1	1	1339584	PRINT, APPLICATOR LOG SHEET	73
-	1	1	1338705-2	DOCUMENTATION PACKAGE	72
-	-	-	-	-	71
-	-	-	-	-	70
-	-	-	-	-	69
-	-	-	-	-	68
-	1	1	461264-1	PLATE, IDENTIFICATION	67
-	2	2	21017-2	SCR,DRIVE(Ø2X.19)ID PLATE	66
-	-	-	-	-	65
-	1	1	986950-1	WASHER, FLAT PRECISION	64
-	1	1	3-18031-0	SCR,SKT SET (M6X6) RAM	63
-	1	1	18023-9	SCR,SKT CAP (M4X6) CP DSC	62
-	-	-	-	-	61
-	1	1	18024-7	SCR,BHC (M4X10) ANVIL	60
-	-	-	-	-	59
-	-	-	-	-	58
-	6	6	18023-9	SCR,SHC (M4X6) STRIP GUIDE	57
-	2	2	1-18023-2	SCR,SHC (M4X12) SLUG BLADE	56
-	-	-	-	-	55
-	2	2	18029-1	NUT,HEX (M3) DRAG	54
-	2	2	986965-1	NUT,HEX SL (M4) DRAG STUD	53
-	2	2	2-18032-2	SCR,SKT SET (M3X10) DRAG	52
-	-	-	-	-	51
-	-	-	-	-	50
-	1	1	18024-3	SCR,BHC (M3X10) CAM	49
-	-	-	-	-	48
-	1	1	1338676-1	CAM, POST-FEED 30 & 40 mm ST	47
-	1	1	1338662-1	APPLICATOR, BASIC (SUBASSY)	46
-	1	1	690191-1	PLUG, NYLON	45
-	1	1	1320998-1	RAM	44
-	1	1	690125-1	WASHER, LAMINATED	43
-	1	1	690124-1	WASHER, RAM	42
-	1	1	2-18024-6	SCREW,BHC (M8X25) CRIMPER	41
-	1	1	23241-1	BALL, STEEL	40
-	1	1	2-22278-7	SPRING, COMPRESSION	39
-	1	1	1320922-1	DISC, INSULATION	38
-	1	1	354777-1	WIRE DISC, PLASTIC	37
-	1	1	22480-5	WASHER, SPRING	36
-	1	1	690212-1	POST, RAM	35
-	-	-	-	-	34
-	-	-	-	-	33
-	8	8	18025-2	WASHER,LOCK (M4) SHEAR BL	32
-	2	2	1-18024-0	SCR,BHC (M4X20) SHEAR PL	31
-	-	-	-	-	30
-	2	2	18024-8	SCR,BHC (M4X12) STRIPPER	29
-	1	1	2-690451-8	SPACER, STRIPPER	28
-	1	1	240639-1	STRIPPER	27
-	-	-	-	-	26
-	2	2	1320906-1	DRAG, STUD	25
-	1	1	1320995-5	STRIP GUIDE	24
-	-	-	-	-	23
-	2	2	4-22281-1	SPRING, DRAG	22
-	-	-	-	-	21
-	1	1	1338665-1	DRAG, STOCK	20
-	2	2	1338664-1	GUIDE, UPPER STRIP	19
-	2	2	1338663-2	GUIDE, LOWER STRIP	18
-	4	4	1-18024-8	SCR,BHC (M6X12) STRIP GD PL	17
-	1	1	1338708-1	SPACER, SLUG BLADE	16
-	-	-	-	-	15
-	-	-	-	-	14
-	1	1	690481-2	SPACER, HOLD DOWN	13
-	1	1	23846-1	SPRING, HOLD DOWN	12
-	1	1	240833-7	PLATE, REAR SHEAR	11
-	-	-	-	-	10
-	1	1	690482-6	PLATE, FRONT SHEAR	9
-	1	2	1-1333217-5	ANVIL	8
-	1	1	690474-6	BLADE, SLUG	7
-	1	1	455892-3	HOLD DOWN, TERMINAL	6
-	1	1	6-240641-9	SPACER, SLUG BLADE	5
-	1	1	238009-1	SPACER, BLOCK CRIMPER	4
-	1	2	8-683453-3	CRIMPER, INSULATION	3
-	1	1	455888-6	SPACER, CRIMPER	2
-	1	2	2-456406-3	CRIMPER, WIRE	1

1. RECOMMENDED SPARE PARTS.
 2. GREASE RAM, CAM, CAM FOLLOWER AND FEED ROD LIGHTLY.
 3. LUBRICATE DAILY PER THE APPLICATOR INSTRUCTION SHEET SUPPLIED WITH THE APPLICATOR.
 4. CRIMP DATA QUOTED IS SPECIFIC TO GERMAN MARKET.



QTY REQD PER ASSY		PARTS LIST	
MATL	HT TR	FIN	
DIMENSIONS: mm (INCHES) DO NOT SCALE PRINT.			
TOLERANCES UNLESS OTHERWISE SPECIFIED:			
1 PLC DEC ±	F. BACKHURST	AMP AMP Incorporated Harrisburg, PA 17105-3608	
2 PLC DEC ±	REL 17-10-01		
3 PLC DEC ±	M. CLIFFORD		
NAME: END FEED HD-I APPLICATOR		MACHINE REF: HD-I APPL	
SCALE: 1 of 1	DWG NO: 1339584	SHEET: 1 of 1 REV: A	
CASE CODE: 00779		CUSTOMER AND ASSEMBLY DRAWING	
P F LTR		REVISION RECORD	
A	SEE ECN 015A-0850-01	MC	OCT01
		APP	DATE

THIS DRAWING IS A CONTROLLED DOCUMENT.
 LAYOUT L1339584
 SET UP GAGE 458638-3
 THIS DRAWING IS UNPUBLISHED.
 RELEASED FOR PUBLICATION BY AMP INCORPORATED. ALL RIGHTS RESERVED.
 © COPYRIGHT 2001
 AMP 1756 REV 3-92

17-OCT-01 14:53:38 eb003420