

4

3

2

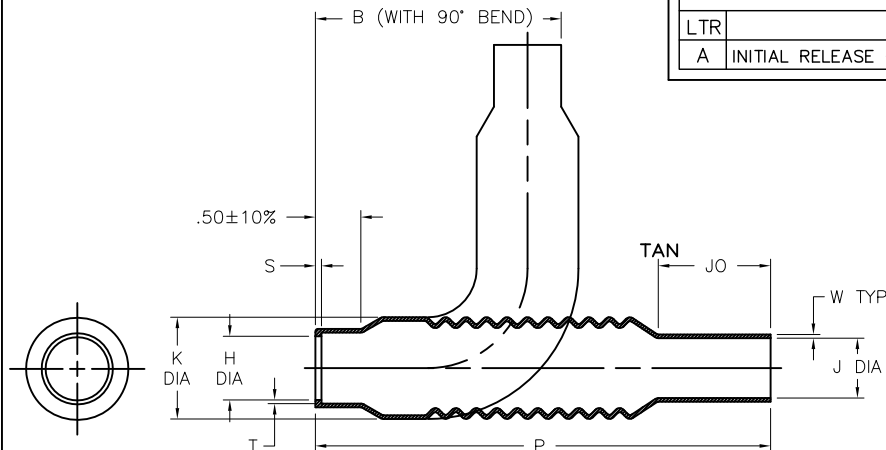
1

## REVISIONS

| LTR | DESCRIPTION                              | DATE       |
|-----|--|------------|
| A   | INITIAL RELEASE OF DWG PER ECO-10-024786 | 12/03/2010 |



AS EXPANDED



AS RECOVERED

## NOTES:

- ALL DIMENSIONS ARE IN:  $\frac{\text{INCHES}}{\text{MILLIMETERS}}$
- DIMENSION APPEARING IN TABLE ARE AS FOLLOWS:  
a - AS SUPPLIED  
b - AFTER UNRESTRICTED RECOVERY

⚠ "S" AND "T" DIMENSIONS APPLY TO A MINIMUM OF 240° OF CIRCUMFERENCE.

**ORDERING INFORMATION:** 202C653 -XX -25 /XXX -0

BASE PART NUMBER

MATERIAL DASH NUMBER  
(See Compatibility Chart)

MODIFICATION NUMBER

ADHESIVE SLASH NUMBER  
(See Compatibility Chart)

COLOR DESIGNATOR

TABLE OF DIMENSIONS

| PART NUMBER   | H                     |                       | J                     |                      | K<br>Max<br>b         | P<br>±10%<br>b         | JO<br>±10%<br>b       | S<br>±.03<br>b      | T<br>±.03<br>b      | W<br>Min<br>b        | B<br>Nom<br>b         | FITS SHIELD<br>ADAPTOR<br>ENTRY SIZE |
|---------------|-----------------------|-----------------------|-----------------------|----------------------|-----------------------|------------------------|-----------------------|---------------------|---------------------|----------------------|-----------------------|--------------------------------------|
|               | Min<br>a              | Max<br>b              | Min<br>a              | Max<br>b             |                       |                        |                       |                     |                     |                      |                       |                                      |
| 202C653-XX-25 | $\frac{2.60}{[66,0]}$ | $\frac{1.16}{[29,4]}$ | $\frac{2.60}{[66,0]}$ | $\frac{.92}{[23,3]}$ | $\frac{1.69}{[42,9]}$ | $\frac{6.75}{[171,4]}$ | $\frac{1.12}{[28,4]}$ | $\frac{.07}{[1,8]}$ | $\frac{.08}{[2,0]}$ | $\frac{.024}{[0,6]}$ | $\frac{3.26}{[82,8]}$ | 11 THRU 16                           |

If this document is printed it becomes uncontrolled. Check for the latest revision

## COMPATIBILITY CHART

| MATERIAL DASH No. | MATERIAL DESCRIPTION               | MATERIAL SPEC | ADHESIVE COATING SLASH No. | ADHESIVE COATING "S" No. |
|-------------------|------------------------------------|---------------|----------------------------|--------------------------|
| -50               | FLUID RESISTANT MODIFIED ELASTOMER | RT-1313       |                            |                          |
|                   |                                    |               |                            |                          |
|                   |                                    |               |                            |                          |
|                   |                                    |               |                            |                          |

UNLESS OTHERWISE SPECIFIED  
DIMENSIONS ARE INCHES. METRIC  
DIMENSIONS ARE IN BRACKETS.

DECIMAL TOLERANCES  
.XXX ± 0.005 [0.13 mm]  
.XX ± 0.01 [0.25 mm]  
.X ± 0.1 [0.50 mm]

ANGLE TOLERANCE  
.X ± 1 DEG.

TYCO ELECTRONICS RESERVES THE RIGHT TO  
AMEND THIS DRAWING AT ANY TIME. USERS  
SHOULD EVALUATE THE SUITABILITY OF THE  
PRODUCT FOR THEIR APPLICATION.

© 2010 Tyco Electronics Corporation. All rights reserved.

DRAWN  
G.Rositano  
11/24/10

APPROVED  
D.Hurrell  
11/24/10

RPN

CAD FILE:

202C653-XX-25\_CD\_A

THIRD ANGLE  
PROJECTION



**Tyco Electronics**

Raychem Molded Parts  
300 Constitution Drive  
Menlo Park, CA 94025

TITLE

UNI-BOOT

SIZE  
B

CODE IDENT. NO.  
06090

DWG. NO.  
202C653-XX-25

DO NOT SCALE THIS DRAWING

SHEET 1 OF 1

4

3

2

1