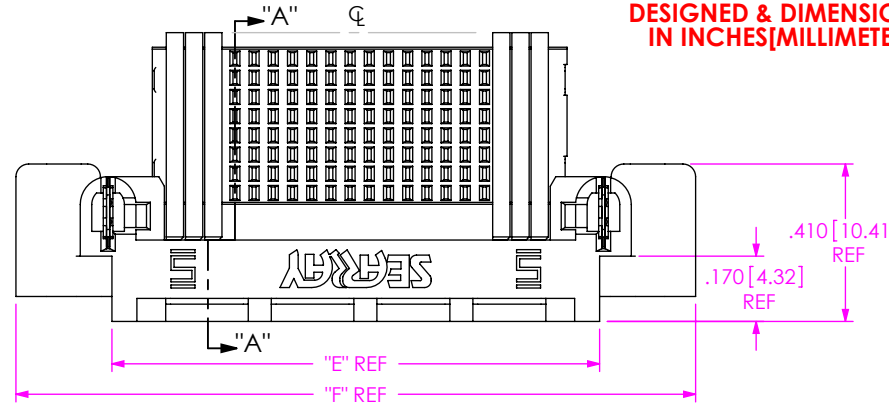


DO NOT SCALE FROM THIS PRINT

DESIGNED & DIMENSIONED IN INCHES[MILLIMETERS]

SEAFP-XX-XX-X-XX-RA-XX-XX



No. OF POSITIONS
-20, -30, -40, -50 (PER ROW)

LEAD STYLE
-01

PLATING SPECIFICATION
-S: 30μ" SELECTIVE GOLD IN CONTACT AREA, MATTE TIN TAIL (USE IM-C-375-XX-S)
-L: 10μ" LIGHT GOLD IN CONTACT AREA, MATTE TIN TAIL (USE IM-C-375-XX-L)
(* = NOT TOOLED)

OPTION
-GP: GUIDE POST HOLE

RETENTION OPTION
-WT: WELD TAB (USE WT-77-XX-X)
*SD: SCREW DOWN (SEE FIG 6, SHT 5) (REQUIRED, MUST CHOOSE ONE)

RIGHT ANGLE
-RA

No. OF ROWS
*04: 4 ROW (SEE FIG 5, SHT 5)
*06: 6 ROW (SEE FIG 4, SHT 4)
-08: 8 ROW (SEE FIG 1)
-10: 10 ROW (SEE FIG 3, SHT 4)

TABLE 1

| No. OF ROWS | BODY CALLOUT | SOCKET WAFER | ALIGNMENT BODY | WELD TAB | "L" |
|-------------|-------------------------|---------------|----------------|------------|--------------|
| *04 | SEAFP-XX-01-RA-04-XX-XX | IM-C-375-04-X | SEAFP-XX-RA-04 | WT-77-04-X | .552 [14.02] |
| *06 | SEAFP-XX-01-RA-06-XX-XX | IM-C-375-06-X | SEAFP-XX-RA-06 | WT-77-06-X | .652 [16.56] |
| -08 | SEAFP-XX-01-RA-08-XX-XX | IM-C-375-08-X | SEAFP-XX-RA-08 | WT-77-08-X | .752 [19.10] |
| -10 | SEAFP-XX-01-RA-10-XX-XX | IM-C-375-10-X | SEAFP-XX-RA-10 | WT-77-10-X | .852 [21.64] |

(* = NOT TOOLED)

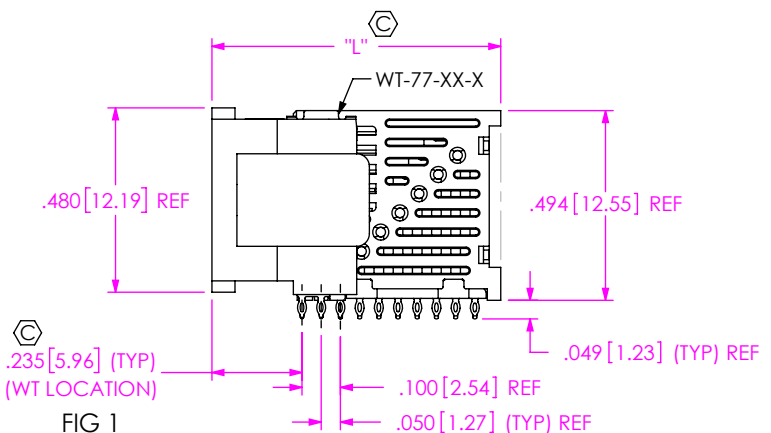
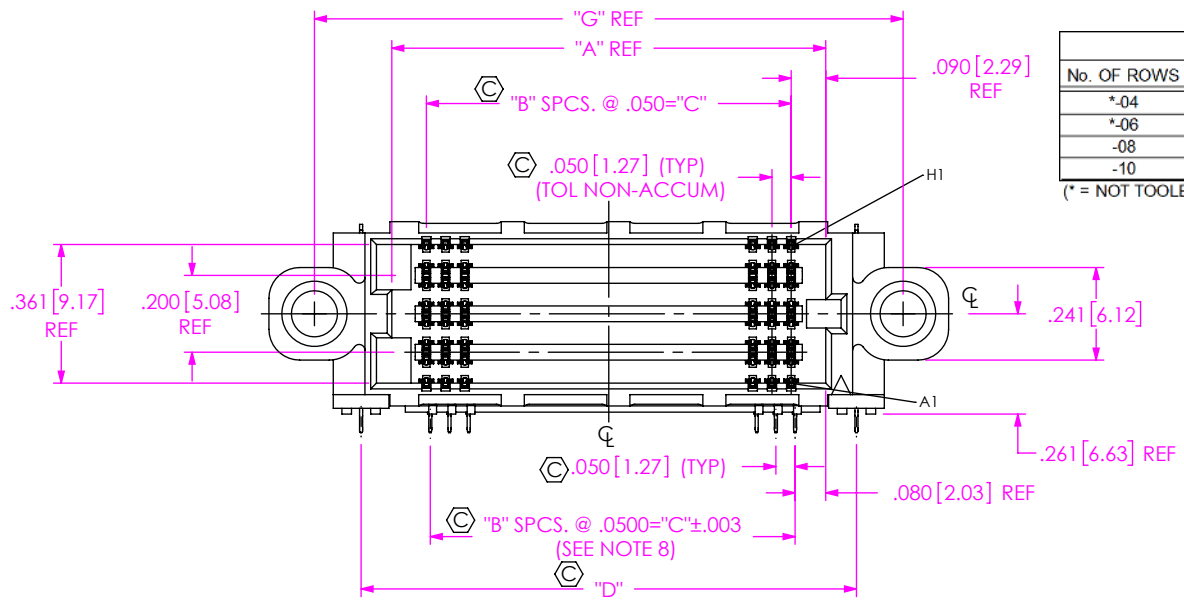
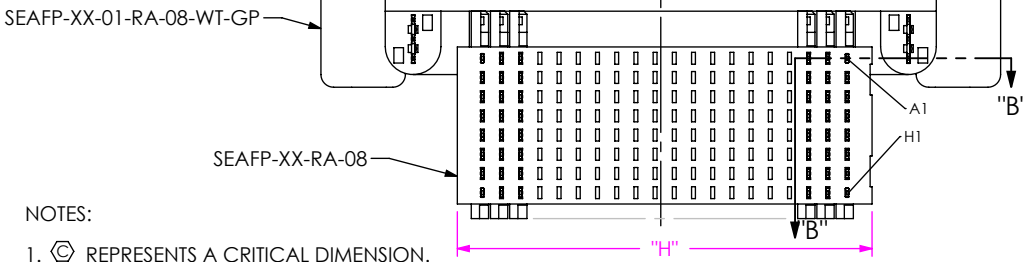


FIG 1
-08: 8 ROW
SEAFP-20-01-X-08-RA-WT-GP SHOWN (SOME CENTER FEATURES REMOVED FOR CLARITY)

TABLE 2

| No. OF POS | "A" | "B" | "C" | "D" | "E" | "H" |
|------------|---------------|-----|---------------|---------------|---------------|---------------|
| -20 | 1.130 [28.70] | 19 | .950 [24.13] | 1.290 [32.77] | 1.270 [32.26] | 1.080 [27.43] |
| -30 | 1.630 [41.40] | 29 | 1.450 [36.83] | 1.790 [45.47] | 1.770 [44.96] | 1.580 [40.13] |
| -40 | 2.130 [54.10] | 39 | 1.950 [49.53] | 2.290 [58.17] | 2.270 [57.66] | 2.080 [52.83] |
| -50 | 2.630 [66.80] | 49 | 2.450 [62.23] | 2.790 [70.87] | 2.770 [70.36] | 2.580 [65.53] |



- NOTES:
- ⊕ REPRESENTS A CRITICAL DIMENSION.
 - CONTACT SAMTEC FOR CONNECTOR PRESS FIT INSTRUCTIONS AND REQUIRED FIXTURES.
 - CONNECTOR BODY COLOR TO BE NATURAL(BEIGE).
 - MINIMUM PUSHOUT FORCE 0.5 LBS[2.22N] FOR CONTACTS.
 - ASSEMBLIES TO BE PACKAGED IN TRAYS.
 - SCREWS FOR -SD OPTION WILL BE BULK PACKAGED AND SHIPPED WITH CONNECTOR, MAXIMUM TORQUE ON STS-03 TO BE 20 IN-OZ.
 - APPLICATION TOOLING P/N CAT-SEAFP-XX-XX-RA REQUIRED FOR TERMINATION, CONTACT IPG FOR FURTHER DETAILS.
 - CHECK DIM ON FIRST AND LAST ROW OF TAILS.
 - WELD TABS CAN BE INSERTED WITH BUMP FACING EITHER DIRECTION.

UNLESS OTHERWISE SPECIFIED, DIMENSIONS ARE IN INCHES.

TOLERANCES ARE:
DECIMALS ANGLES
.XX: ±.01[0.3]
.XXX: ±.005[0.13]
.XXXX: ±.0020[0.051]

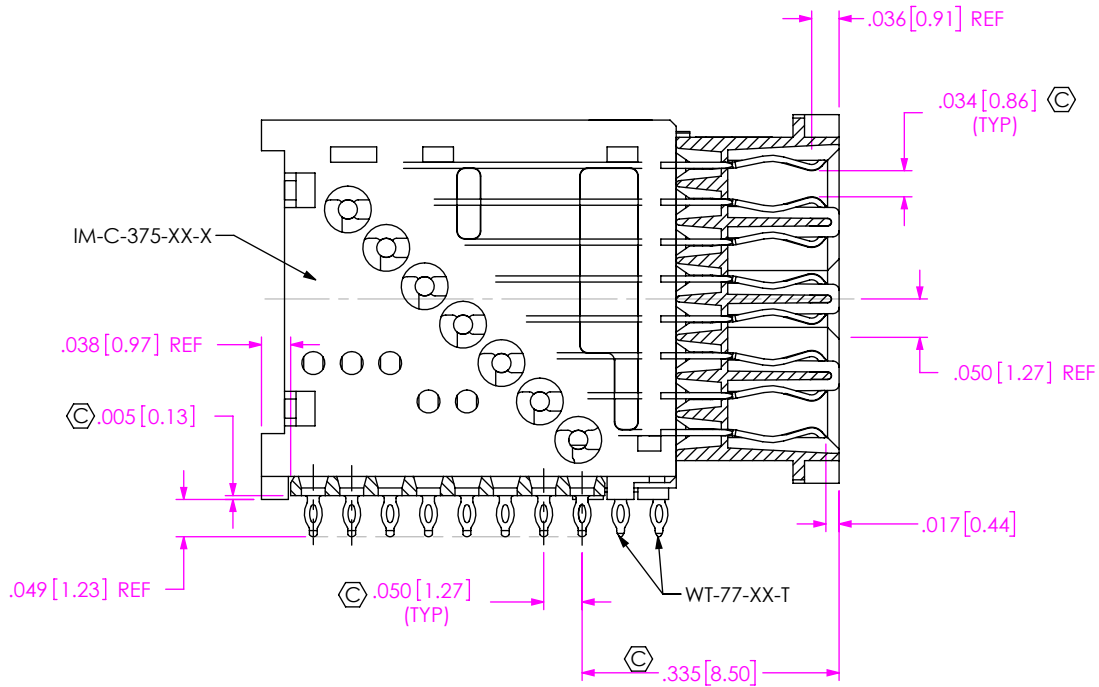
PROPRIETARY NOTE
THIS DOCUMENT CONTAINS CONFIDENTIAL AND PROPRIETARY INFORMATION AND ALL DESIGN, MANUFACTURING, REPRODUCTION, USE, PATENT RIGHTS AND SALES RIGHTS ARE EXPRESSLY RESERVED BY SAMTEC, INC. THIS DOCUMENT SHALL NOT BE DISCLOSED, IN WHOLE OR PART, TO ANY UNAUTHORIZED PERSON OR ENTITY NOR REPRODUCED, TRANSFERRED OR INCORPORATED IN ANY OTHER PROJECT IN ANY MANNER WITHOUT THE EXPRESS WRITTEN CONSENT OF SAMTEC, INC.



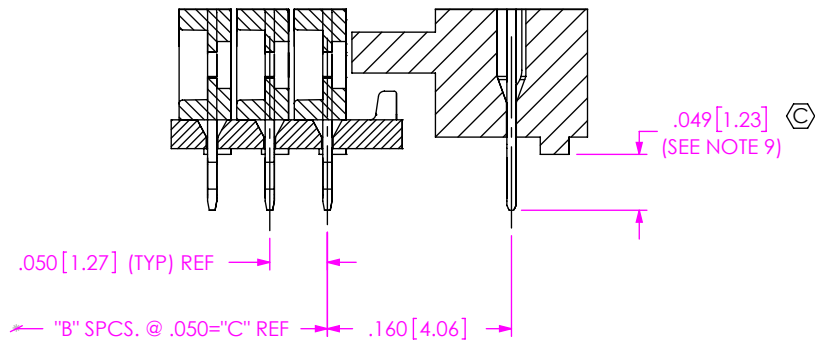
520 PARK EAST BLVD., NEW ALBANY, IN 47150
PHONE: 812-944-6733 FAX: 812-948-5047
e-Mail info@SAMTEC.com code 55322

MATERIAL: DO NOT SCALE DRAWING SHEET SCALE: 2:1
INSULATOR: LCP, COLOR: NATURAL (BEIGE)
CONTACT: COPPER ALLOY
WELD TAB: COPPER ALLOY

DESCRIPTION: SEAFP-RA ASSEMBLY
DWG. NO. SEAFP-XX-XX-X-XX-RA-XX-XX
BY: VICKY Z 07/03/2011 SHEET 1 OF 5



SECTION "A"- "A"
SCALE 4 : 1



SECTION "B"- "B"
SCALE 6 : 1

| STYLE | No. OF POS | "F" | "G" |
|--------------------------|------------|---------------|---------------|
| STANDARD WITH -GP OPTION | -20 | 1.770 [44.96] | 1.533 [38.94] |
| | -30 | 2.270 [57.66] | 2.033 [51.64] |
| | -40 | 2.770 [70.36] | 2.533 [64.34] |
| WITHOUT -GP OPTION | -20 | 1.435 [36.45] | N/A |
| | -30 | 1.935 [49.15] | |
| | -40 | 2.435 [61.85] | |
| | -50 | 2.935 [74.55] | |

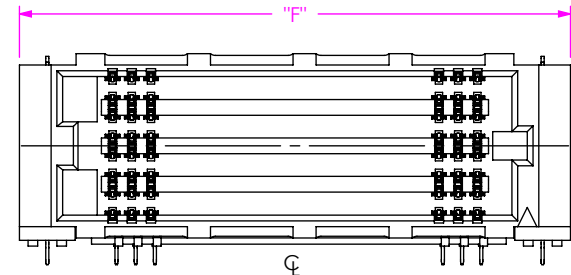
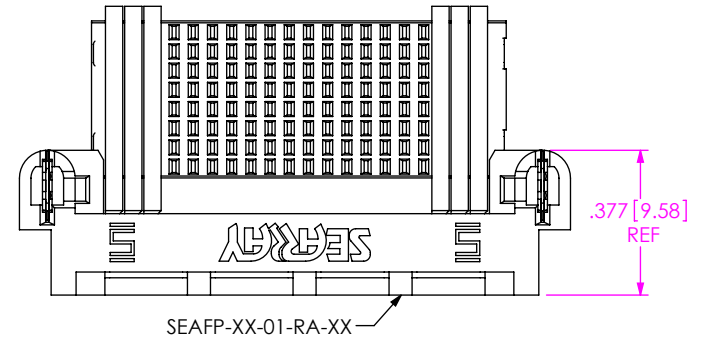


FIG 2
WITHOUT -GP OPTION
SEAFP-20-01-X-08-RA-WT SHOWN
(SAME AS FIG 1, EXCEPT AS SHOWN)
(SOME CENTER FEATURES REMOVED FOR CLARITY)

PROPRIETARY NOTE
THIS DOCUMENT CONTAINS CONFIDENTIAL AND PROPRIETARY INFORMATION AND ALL DESIGN, MANUFACTURING, REPRODUCTION, USE, PATENT RIGHTS AND SALES RIGHTS ARE EXPRESSLY RESERVED BY SAMTEC, INC. THIS DOCUMENT SHALL NOT BE DISCLOSED, IN WHOLE OR PART, TO ANY UNAUTHORIZED PERSON OR ENTITY NOR REPRODUCED, TRANSFERRED OR INCORPORATED IN ANY OTHER PROJECT IN ANY MANNER WITHOUT THE EXPRESS WRITTEN CONSENT OF SAMTEC, INC.

DO NOT SCALE DRAWING

SHEET SCALE: 2:1

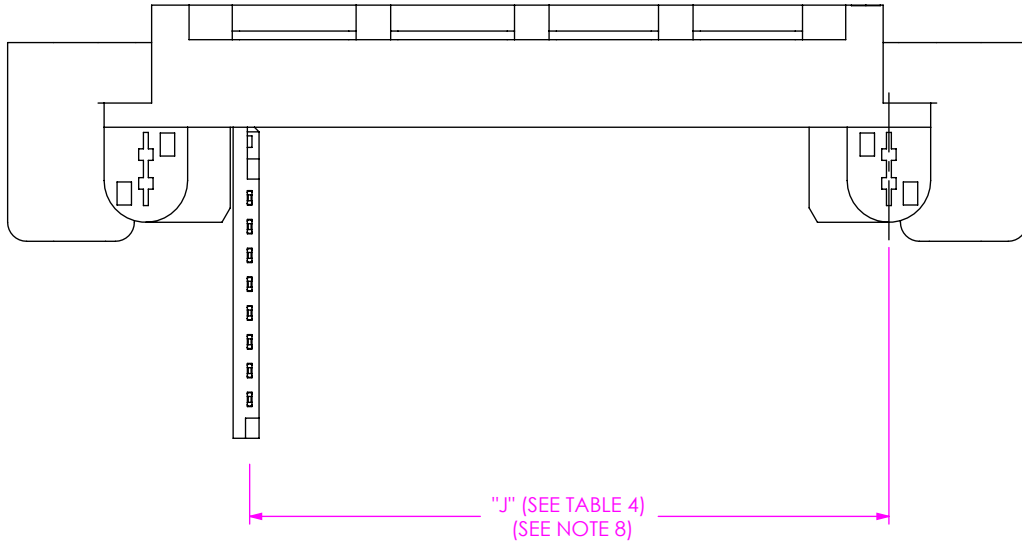


520 PARK EAST BLVD, NEW ALBANY, IN 47150
PHONE: 812-944-6733 FAX: 812-948-5047
e-Mail info@SAMTEC.com code 55322

DESCRIPTION: SEAFP-RA ASSEMBLY

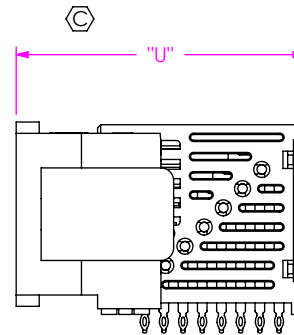
DWG. NO. SEAFP-XX-XX-X-XX-RA-XX-XX

BY: VICKY Z 07/03/2011 SHEET 2 OF 5

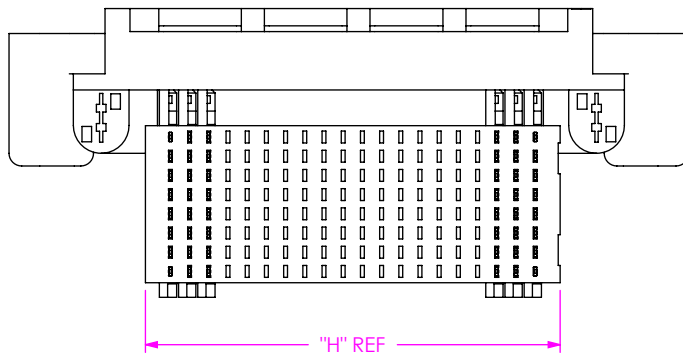


| TABLE 4 | |
|------------|---------------|
| No. OF POS | "J" |
| -20 | 1.110 [28.19] |
| -30 | 1.610 [40.89] |
| -40 | 2.110 [53.59] |
| -50 | 2.610 [66.29] |

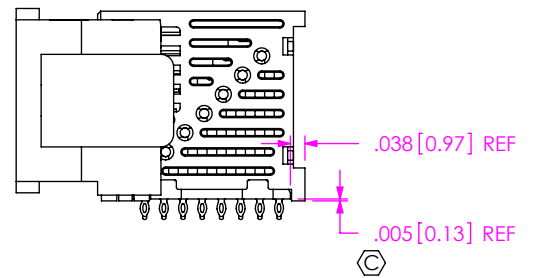
IN-PROCESS VIEW 1
 FILL FIRST IM-C-375-XX-X TO DIMENSION SHOWN
 (SEAFP-20-01-X-08-RA-WT-GP SHOWN)



IN-PROCESS VIEW 2
 FILL IM-C-375-XX-X
 (SEAFP-20-01-X-08-RA-WT-GP SHOWN)



IN-PROCESS VIEW 3
 FILL SEAFP-XX-RA-XX
 (SEAFP-20-01-X-08-RA-WT-GP SHOWN)
 (SOME CENTER FEATURES REMOVED FOR CLARITY)



PROPRIETARY NOTE
 THIS DOCUMENT CONTAINS CONFIDENTIAL AND PROPRIETARY INFORMATION AND ALL DESIGN, MANUFACTURING, REPRODUCTION, USE, PATENT RIGHTS AND SALES RIGHTS ARE EXPRESSLY RESERVED BY SAMTEC, INC. THIS DOCUMENT SHALL NOT BE DISCLOSED, IN WHOLE OR PART, TO ANY UNAUTHORIZED PERSON OR ENTITY NOR REPRODUCED, TRANSFERRED OR INCORPORATED IN ANY OTHER PROJECT IN ANY MANNER WITHOUT THE EXPRESS WRITTEN CONSENT OF SAMTEC, INC.

DO NOT SCALE DRAWING

SHEET SCALE: 2:1

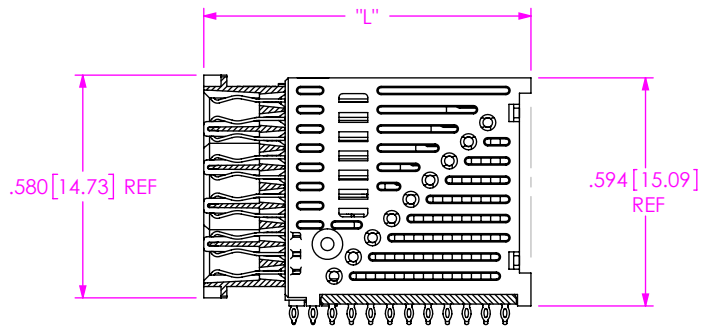
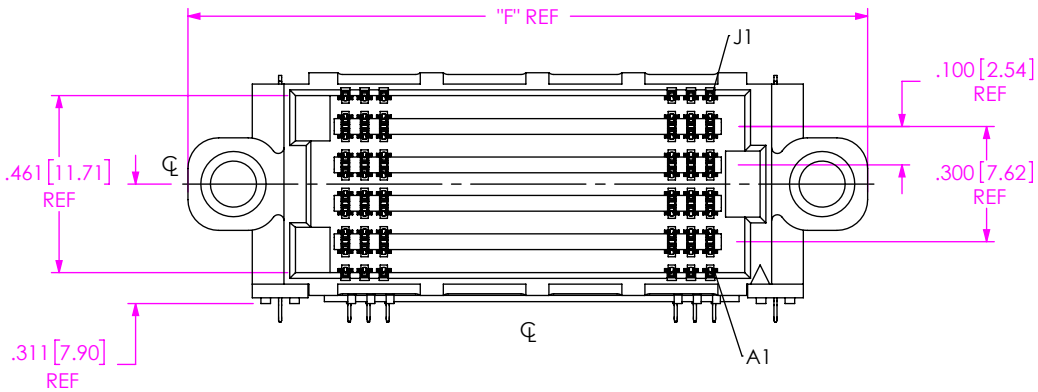
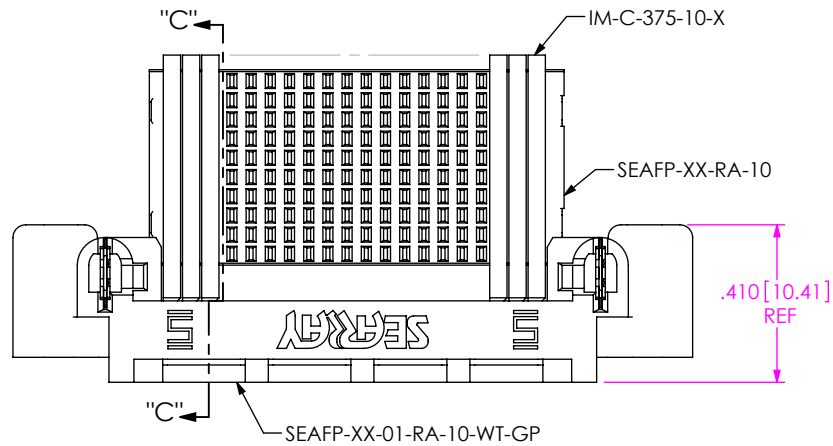


520 PARK EAST BLVD. NEW ALBANY, IN 47150
 PHONE: 812-944-6733 FAX: 812-948-5047
 e-Mail: info@SAMTEC.com code 55322

DESCRIPTION: SEAFP-RA ASSEMBLY

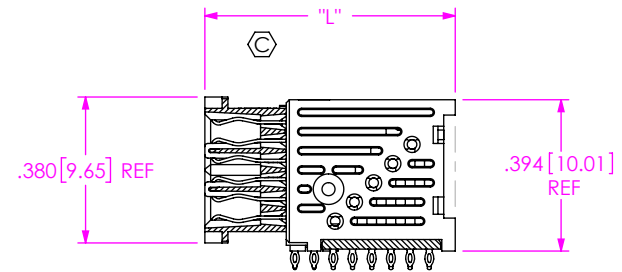
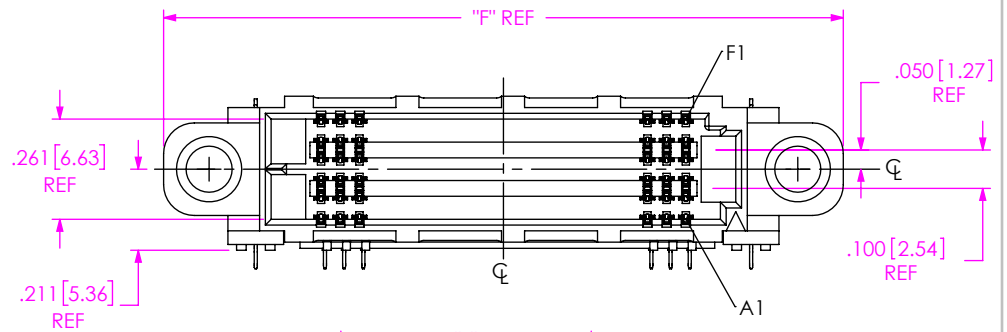
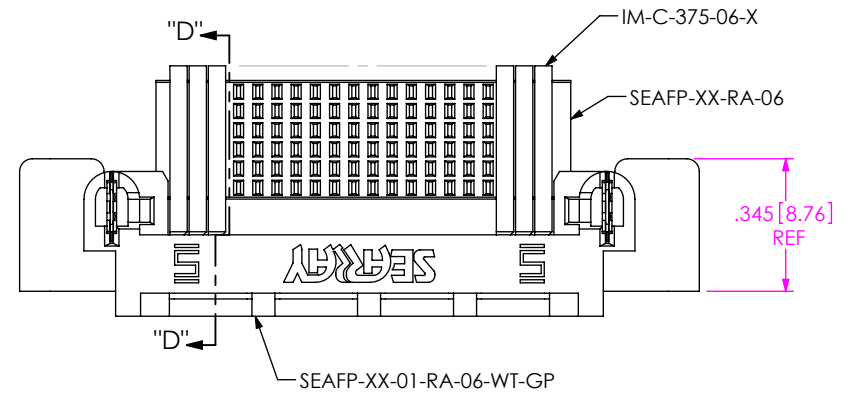
DWG. NO. SEAFP-XX-XX-X-XX-RA-XX-XX

BY: VICKY Z 07/03/2011 SHEET 3 OF 5



SECTION "C"-"C"

FIG 3
-10: 10 ROW
SEAFP-20-01-X-10-RA-WT-GP SHOWN
(SAME AS FIG 1, EXCEPT AS SHOWN)
(SOME CENTER FEATURES REMOVED FOR CLARITY)



SECTION "D"-"D"

FIG 4
*06: 6 ROW
SEAFP-20-01-X-06-RA-WT-GP SHOWN
(SAME AS FIG 1, EXCEPT AS SHOWN)
(SOME CENTER FEATURES REMOVED FOR CLARITY)
(* = NOT TOOLED)

PROPRIETARY NOTE

THIS DOCUMENT CONTAINS CONFIDENTIAL AND PROPRIETARY INFORMATION AND ALL DESIGN, MANUFACTURING, REPRODUCTION, USE, PATENT RIGHTS AND SALES RIGHTS ARE EXPRESSLY RESERVED BY SAMTEC, INC. THIS DOCUMENT SHALL NOT BE DISCLOSED, IN WHOLE OR PART, TO ANY UNAUTHORIZED PERSON OR ENTITY NOR REPRODUCED, TRANSFERRED OR INCORPORATED IN ANY OTHER PROJECT IN ANY MANNER WITHOUT THE EXPRESS WRITTEN CONSENT OF SAMTEC, INC.

DO NOT SCALE DRAWING

SHEET SCALE: 2:1



520 PARK EAST BLVD, NEW ALBANY, IN 47150
PHONE: 812-944-6733 FAX: 812-948-5047
e-Mail info@SAMTEC.com code 55322

DESCRIPTION:

SEAFP-RA ASSEMBLY

DWG. NO.

SEAFP-XX-XX-X-XX-RA-XX-XX

BY: VICKY Z

07/03/2011

SHEET 4 OF 5

| PCB THICKNESS | SCREW P/N | SCREW LENGTH |
|---------------------------|-----------|--------------|
| .062 [1.57] - .125 [3.18] | STS-03 | .375 [9.53] |

| No. OF POS | "K" |
|------------|---------------|
| -20 | 1.290 [32.77] |
| -30 | 1.790 [45.47] |
| -40 | 2.290 [58.17] |
| -50 | 2.790 [70.87] |

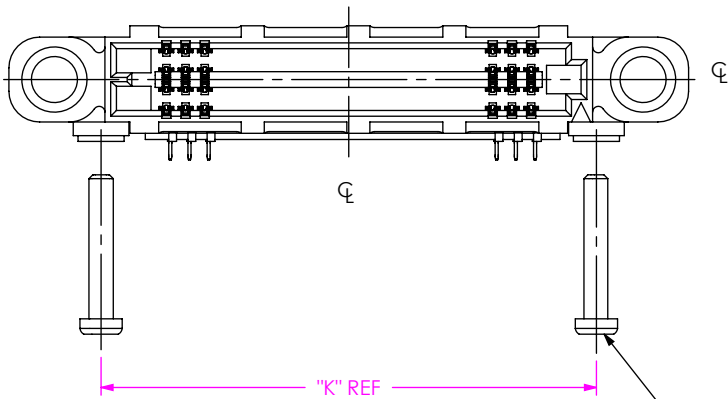
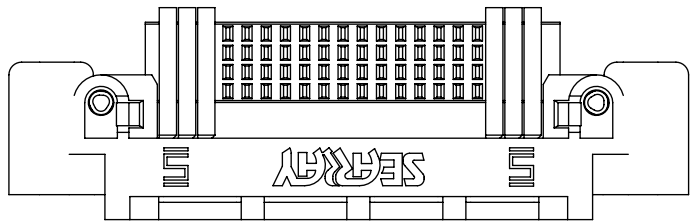


FIG 6
 *-SD: SCREW DOWN OPTION
 SEAFP-20-01-X-04-RA-SD-GP SHOWN
 (SAME AS FIG 5, EXCEPT AS SHOWN)
 (SOME CENTER FEATURES REMOVED FOR CLARITY)
 (* = NOT TOOLED)

STS-03 (2 PLCS)
 (SEE NOTE 6)

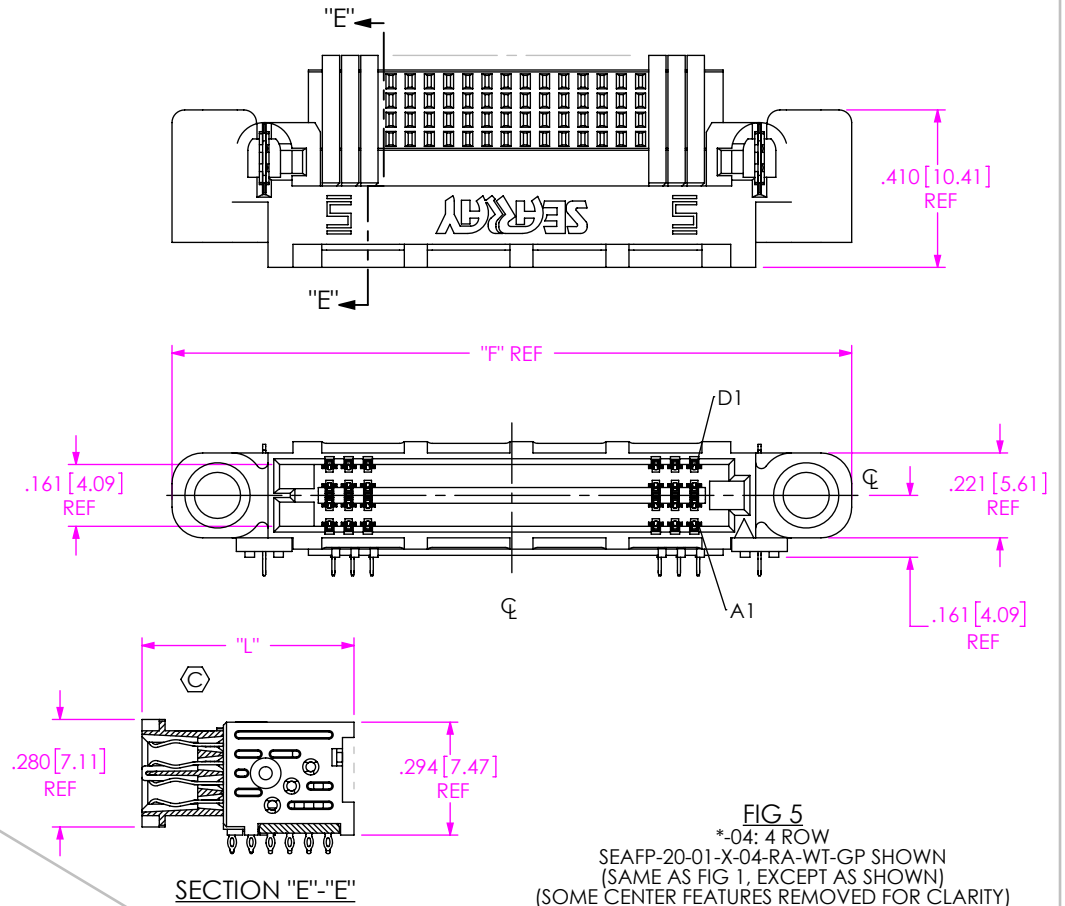
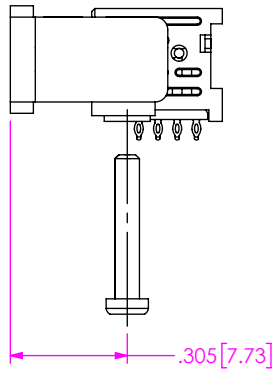


FIG 5
 *-04: 4 ROW
 SEAFP-20-01-X-04-RA-WT-GP SHOWN
 (SAME AS FIG 1, EXCEPT AS SHOWN)
 (SOME CENTER FEATURES REMOVED FOR CLARITY)
 (* = NOT TOOLED)

PROPRIETARY NOTE
 THIS DOCUMENT CONTAINS CONFIDENTIAL AND PROPRIETARY INFORMATION AND ALL DESIGN, MANUFACTURING, REPRODUCTION, USE, PATENT RIGHTS AND SALES RIGHTS ARE EXPRESSLY RESERVED BY SAMTEC, INC. THIS DOCUMENT SHALL NOT BE DISCLOSED, IN WHOLE OR PART, TO ANY UNAUTHORIZED PERSON OR ENTITY NOR REPRODUCED, TRANSFERRED OR INCORPORATED IN ANY OTHER PROJECT IN ANY MANNER WITHOUT THE EXPRESS WRITTEN CONSENT OF SAMTEC, INC.

DO NOT SCALE DRAWING

SHEET SCALE: 2:1



520 PARK EAST BLVD, NEW ALBANY, IN 47150
 PHONE: 812-944-6733 FAX: 812-948-5047
 e-Mail info@SAMTEC.com code 55322

DESCRIPTION:
 SEAFP-RA ASSEMBLY

DWG. NO.
SEAFP-XX-XX-X-XX-RA-XX-XX

BY: VICKY Z 07/03/2011 SHEET 5 OF 5