

Type FSO

Fast Acting Glass Tube Fuse

Automotive Fuse



www.optifuse.com (800) 621-0326

Product Size: Ø6.3x25.4mm (Ø1/4"x1")

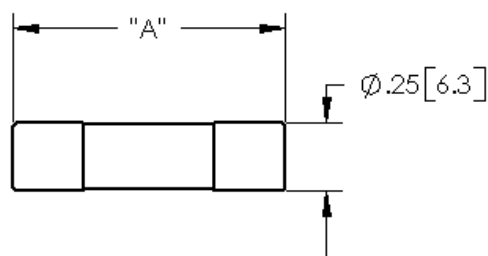
Ampere Rating: 4A~30A

Voltage Rating: 32VDC and less

Agency Standards and Listings:



Mechanical Dimensions: Inches[mm]



Catalog Number	"A" Length	"A" Length
	Inches	MM
FSO-4A	5/8	15.9
FSO-6A	3/4	19.0
FSO-7.5A	7/8	22.2
FSO-9A	7/8	22.2
FSO-14A	1-1/16	27.0
FSO-20A	1-1/4	31.7
FSO-30A	1-7/16	36.5

General Info:

For Automotive Circuits

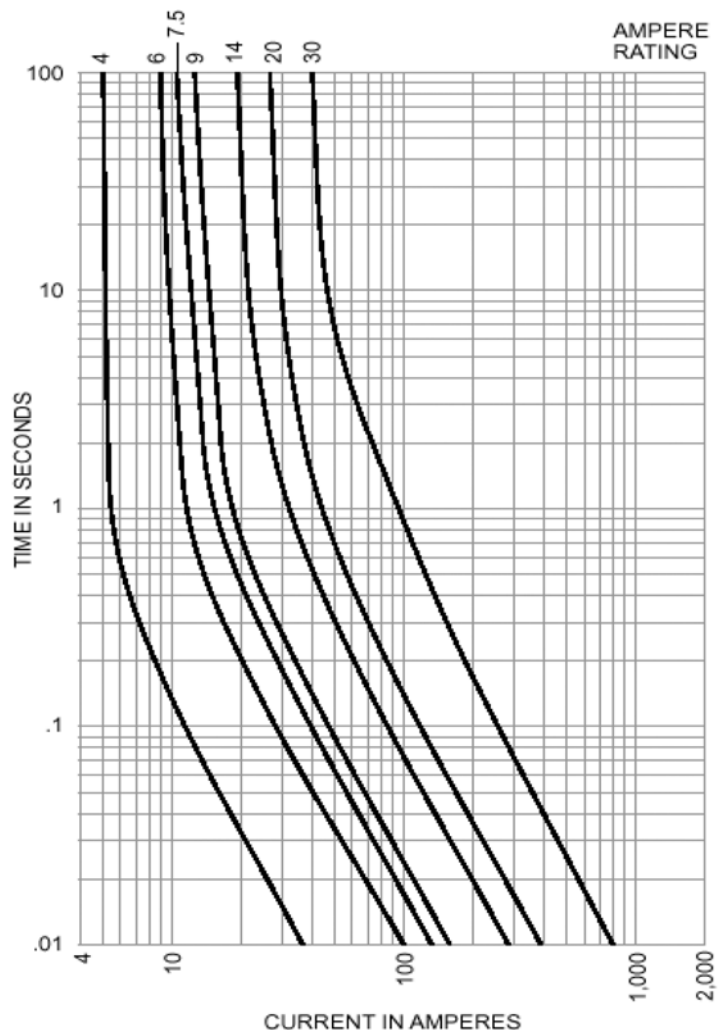
Visual indication glass body

SAE specifications

Size varies with rating to prevent over-fusing

For use with In-Line holders and 1/4" clips.

Time-Current Characteristics--Total Clear



Warning:



-Operation beyond the specified maximum ratings or improper use may result in damage and possible electrical arcing and/or flame.

-Glass Tube device are intended for occasional overcurrent protection. Application for repeated overcurrent condition and/or prolonged trip are not anticipated.

-Avoid contact of Glass Tube device with chemical solvent. Prolonged contact will damage the device performance.