



# 2490 MHz Cavity Bandpass Filter



**ANATECH ELECTRONICS INC**  
RF & Microwave Filters & Products

**Part Number: AB2490B721**

## Electrical specifications

**Center Frequency:** 2490 MHz  
**Insertion loss @Fo:** 1.5 dB typ 3.0 dB max  
**Return Loss:** 13 dB  
**3 dB BW:** ±11 MHz  
**20 dB BW:** ±20 MHz  
**30 dB BW:** ±40 MHz  
**Impedance:** 50 Ohm  
**Power:** 50 dBm

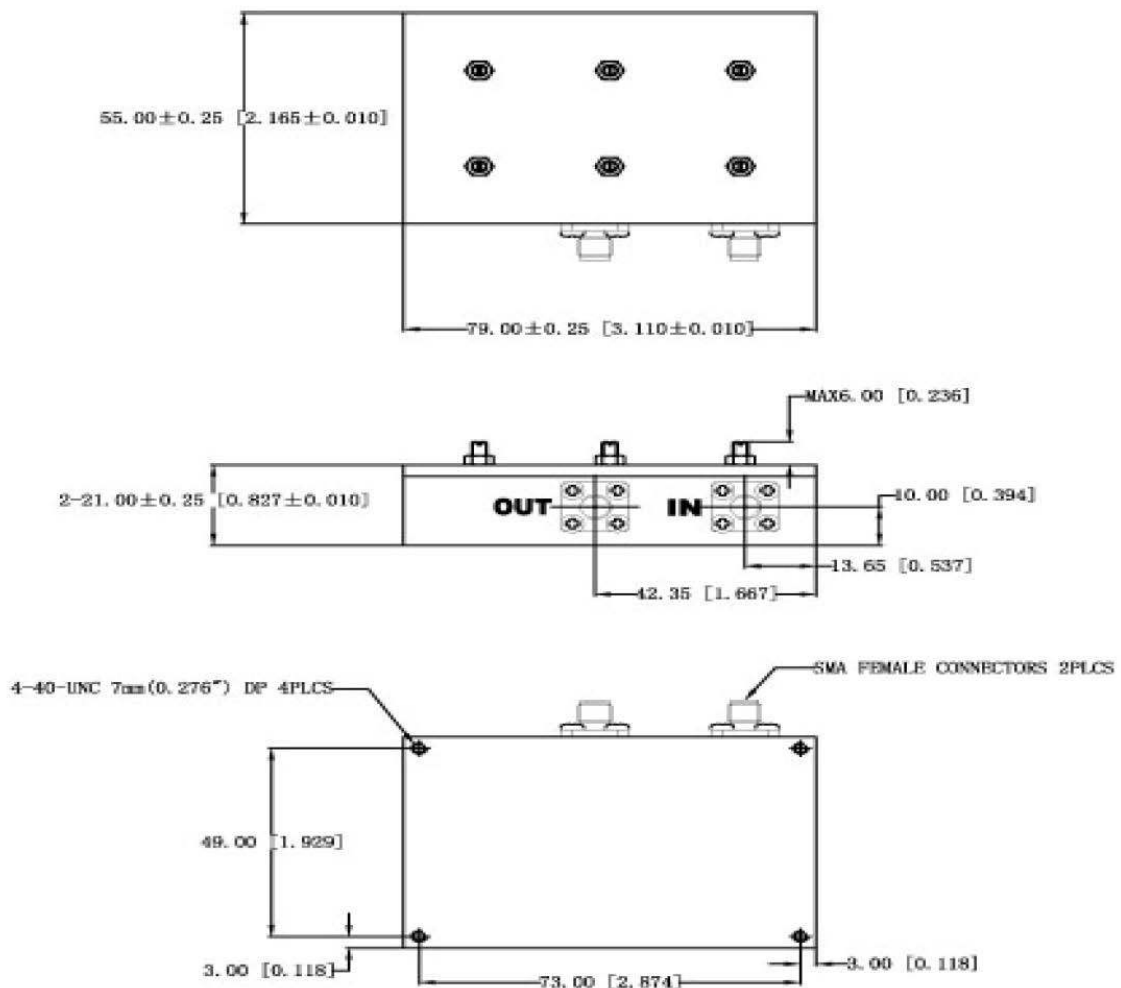
## Mechanical

**Mounting Method:** Threaded Mounting Holes  
**Connector Type:** SMA Female  
**Dimensions:** 3.11" X 2.16" X 0.82" in

## Environmental

**Operating Temperature:** -45 to +85° C  
**Storage Temperature:** -55 to +95° C  
**Shock:** 20 G. 11ms  
**Vibration:** 20 G. 5 to 200 Hz

## Outline Drawing:



2 decimal places: +/-0.01 inches [+/-0.3mm]  
3 decimal places: +/-0.005 inches [+/-0.13mm]  
Angles: +/-1 Deg.

When max dimensions are called out the above tolerances do not apply as long as it is under the max call out.