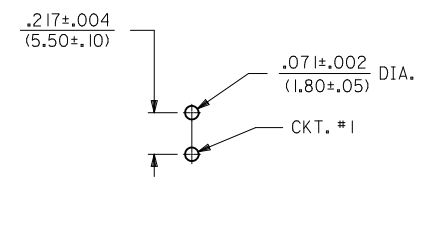
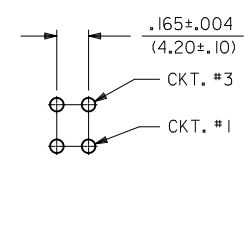
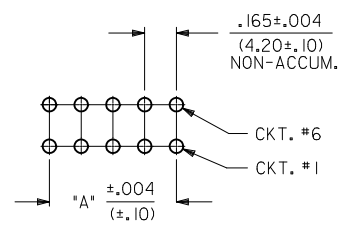
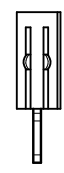
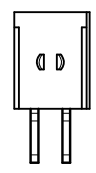
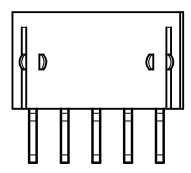
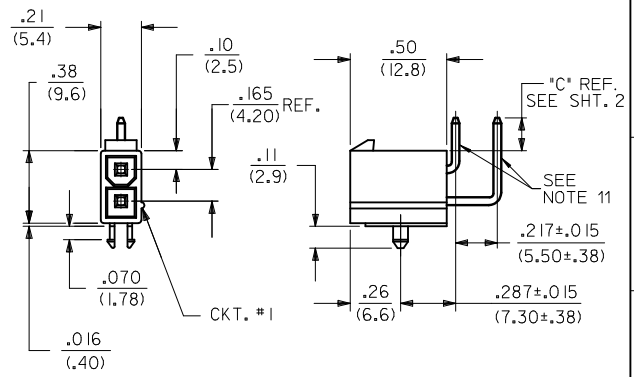
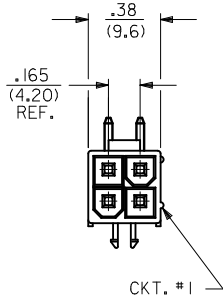
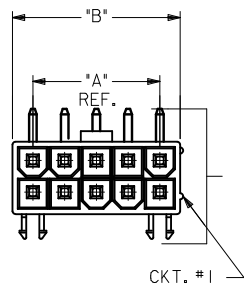


CIRCUIT SIZE	DIM. "A"	DIM. "B"
6	.33 (8.4)	.54 (13.8)
8	.50 (12.6)	.71 (18.0)
10	.66 (16.8)	.87 (22.2)
12	.83 (21.0)	1.04 (26.4)
14	.99 (25.2)	1.20 (30.6)
16	1.16 (29.4)	1.37 (34.8)
18	1.32 (33.6)	1.54 (39.0)
20	1.49 (37.8)	1.70 (43.2)
22	1.65 (42.0)	1.87 (47.4)
24	1.82 (46.2)	2.03 (51.6)

NOTES:

- HOUSING MATERIAL:
1 = NYLON 6/6, U.L. 94V-2, COLOR: BLACK
TERMINAL MATERIAL: BRASS ALLOY
- TERMINAL PLATING:
1 = .000100/(.00254) MIN. MATTE TIN OVER .000050/(.00127) MIN. NICKEL.
2 = .000030/(.00076) MIN. SELECT GOLD AND .000100/(.00254) MIN. SELECT MATTE TIN OVER .000050/(.00127) MIN. NICKEL OVERALL.
- PRODUCT SPECIFICATIONS: SEE PS-5556-001 EXCEPT FOR ITEM NO'S, 4-2-6 AND 4-2-7 UNDER MECHANICAL PERFORMANCE.
- PACKAGING SPECIFICATION:
PACKED PER PK-5569-002
- PART MATES WITH MINI-FIT JR. RECEPTACLE #5557.
- ITEM NO'S. PRECEDED BY AN "X" IN THE CHART ARE NOT AVAILABLE.
- DISCOLORATION IN THE BANDOLIER CARRIER AREA OF THE PIN IS INHERENT TO THE PLATING PROCESS AND IS DUE TO THE MASKING EFFECT OF THE CARRIER. THIS DISCOLORATION IS IN A NON-FUNCTIONAL AREA OF THE PIN AND WILL NOT AFFECT THE PERFORMANCE OF THE HEADER ASSEMBLY.
- PART CONFORMS TO CLASS "B" REQUIREMENTS OF COSMETIC SPECIFICATION PS-45499-002.
- CONNECTORS ARE NOT TO BE MATED AND UNMATED WHILE CIRCUITS ARE LIVE.
- PARTS ARE NOT DESIGNED FOR CURRENT SHARING.
- FORMING MARKS ON PINS ARE ACCEPTABLE



RECOMMENDED HOLE LAYOUT FOR .070/(1.78) MAX. THICK P.C. BOARD (FROM UNDER-SIDE OF BOARD)

RECOMMENDED HOLE LAYOUT FOR .070/(1.78) MAX. THICK P.C. BOARD (FROM UNDER-SIDE OF BOARD)

RECOMMENDED HOLE LAYOUT FOR .070/(1.78) MAX. THICK P. C. BOARD (FROM UNDER-SIDE OF BOARD)

CHANGE PLATING EC NO: UCP2012-1560 DRAWN: NGUYEN 2012/01/18 CHKD: BELL 2012/01/18 APPR: FSMITH 2012/02/02	DESCRIPTION REV	QUALITY SYMBOLS	GENERAL TOLERANCES (UNLESS SPECIFIED) <table border="1"> <tr> <th></th> <th>mm</th> <th>INCH</th> </tr> <tr> <td>4 PLACES</td> <td>± .---</td> <td>± .---</td> </tr> <tr> <td>3 PLACES</td> <td>± .---</td> <td>± .010</td> </tr> <tr> <td>2 PLACES</td> <td>± .25</td> <td>± .015</td> </tr> <tr> <td>1 PLACE</td> <td>± .38</td> <td>± .---</td> </tr> </table>		mm	INCH	4 PLACES	± .---	± .---	3 PLACES	± .---	± .010	2 PLACES	± .25	± .015	1 PLACE	± .38	± .---	DIMENSION STYLE IN/MM	SCALE 2:1	DESIGN UNITS INCH	THIRD ANGLE PROJECTION
				mm	INCH																	
		4 PLACES		± .---	± .---																	
		3 PLACES		± .---	± .010																	
2 PLACES	± .25	± .015																				
1 PLACE	± .38	± .---																				
DRAWN BY NGUYEN	DATE 2011/10/17	TITLE MINIFIT JR RA HDR ASSY W/MOUNTING PEGS PINS ROTATE 180																				
CHECKED BY RJF	DATE 1993/05/04	MOLEX INCORPORATED																				
APPROVED BY FSMITH	DATE 2011/10/28	MATERIAL NO. SEE CHART	DOCUMENT NO. SDA-43270-*	SHEET NO. 1 OF 2																		

ITEM NUMBER	CKT. SIZE	TERMINAL PLATING	HOUSING MATERIAL	DIM 'C' REF
X 43270-0001	2	TIN OVER NICKEL	94V-2 BLACK	$\frac{.12}{(3.1)}$
X 43270-0002	4			
43270-0003	6			
X 43270-0004	8			
X 43270-0005	10			
X 43270-0006	12			
X 43270-0007	14			
X 43270-0008	16			
X 43270-0009	18			
X 43270-0010	20			
X 43270-0011	22			
X 43270-0012	24	TIN OVER NICKEL	94V-2 BLACK	$\frac{.12}{(3.1)}$

SEE SHEET 1 EC NO: UCP2012-1560 DRAWN: NGUYEN 2012/01/18 CHKD: BELL 2012/01/18 APPR: FSMITH 2012/02/02	QUALITY SYMBOLS 	GENERAL TOLERANCES (UNLESS SPECIFIED)		DIMENSION STYLE IN/MM		SCALE 1:1	DESIGN UNITS INCH	THIRD ANGLE PROJECTION	
									TITLE MINIFIT JR RA HDR ASSY W/MOUNTING PEGS PINS ROTATE 180
						DRAWN BY DATE NGUYEN 2011/10/17		CHECKED BY DATE RJF 1993/05/04	
						APPROVED BY DATE FSMITH 2011/10/28		MOLEX INCORPORATED	
		ANGULAR $\pm 1/2^\circ$		MATERIAL NO. SEE CHART		DOCUMENT NO. SDA-43270-*		SHEET NO. 2 OF 2	
		DRAFT WHERE APPLICABLE MUST REMAIN WITHIN DIMENSIONS		SIZE 		THIS DRAWING CONTAINS INFORMATION THAT IS PROPRIETARY TO MOLEX INCORPORATED AND SHOULD NOT BE USED WITHOUT WRITTEN PERMISSION			