

List of "SFW__R-5/6STE5LF" customer document

DOCUMENT NO.	LIST
10105270(SHEET1)	DOCUMENT LIST
10105270(SHEET2)	CAT.NO.TABLE FOR 1mm SPACING SMT CONNECTOR (SFW__R-5/6ST__LF)
10105270(SHEET3)	1mm SPACING SMT CONNECTOR (SFW__R-5ST_LF)
10105270(SHEET4)	1mm SPACING SMT CONNECTOR (SFW__R-6ST_LF)
10105270(SHEET5)	CAT.NO.TABLE FOR PLASTIC TAPE PACKAGED 1mm SPACING SMT CONNECTOR (SFW__R-5/6STE5LF)
10105270(SHEET6)	PLASTIC TAPE PACKAGED 1mm SPACING SMT CONNECTOR (SFW__R-5STE5LF)
10105270(SHEET7)	PLASTIC TAPE PACKAGED 1mm SPACING SMT CONNECTOR (SFW__R-6STE5LF)
10105270(SHEET8)	RECOMMENDED CABLE (CIC) (SFW__R-5/6ST_)
SC-SFW12	PRODUCT SPECIFICATION
GS-20-131	HANDLING PROCEDURES

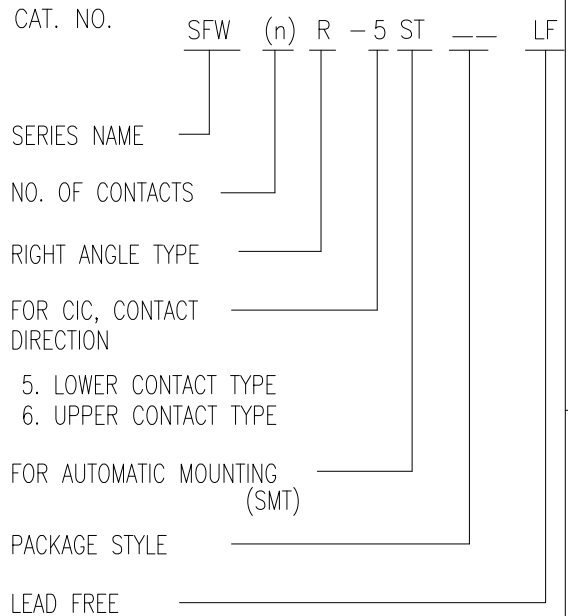
Amphenol FCI

© 2016 AFCl

mat'l. code		surface		tolerance		projection		product family	
-		ISO 1302 ✓		ISO 406 ISO 1101				58RF	
ltr	ecn no	dr	date	tolerances unless otherwise specified		MM		title	
A	J09-0299	M.Y	2009-8-7	angles	linear	← →		1mm SPACING CIC CONNECTOR DOCUMENT LIST	
B	J09-0380	M.Y	2009-10-27			scale N/A		(Cat. No. : SFW__R-5/6STE5LF)	
C	ELX-J-33007	S.W	2019-3-25			Amphenol FCI		dwg no sheet 1 of 8 size	
				dr	S.WATANABE	2019-3-25		10105270 A4	
				enr	S.WATANABE	2019-3-25		type Product Customer Drawing	
				chr	S-H.THIO	2019-3-26			
				appd	Y.KAMEDA	2019-3-26			
sheet index	revision sheet	C	C	C	C	C	C	C	C
		1	2	3	4	5	6	7	8

CAT. NO. & DIMENSIONS

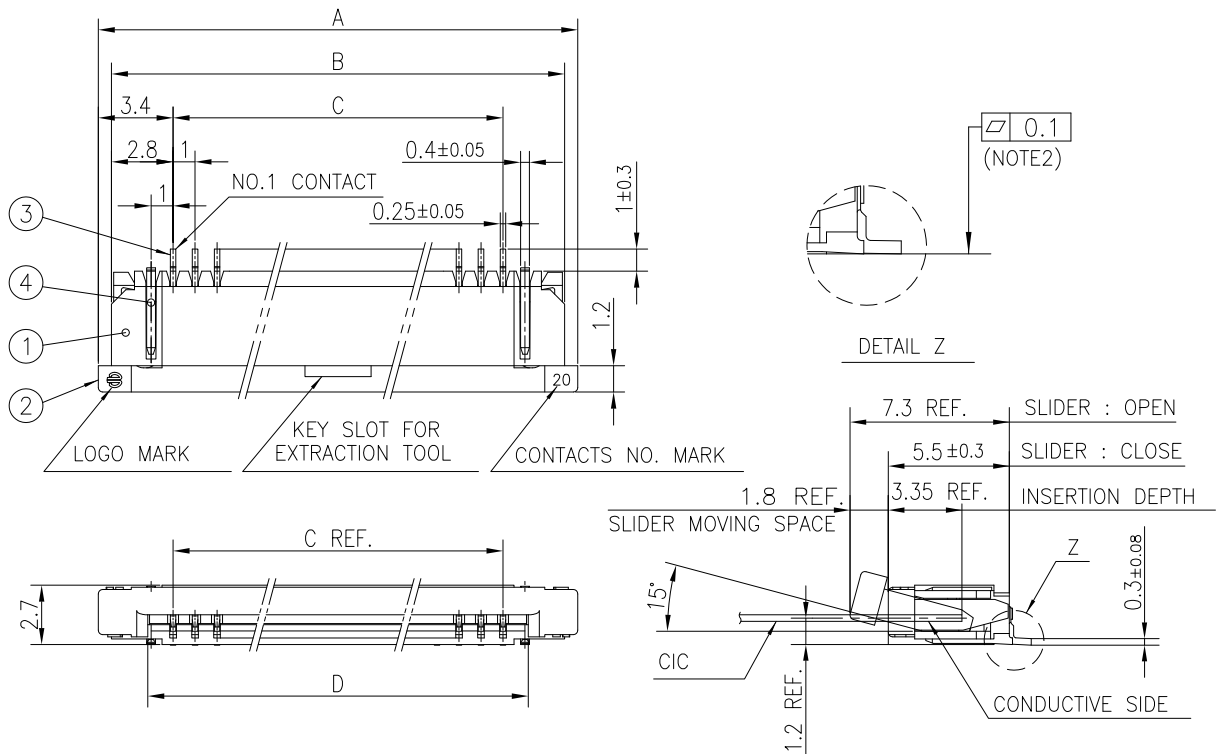
NO. OF CONTACTS (n)	CAT. NO.	DIMENSIONS (NOTE2)			
		A ± 0.2	B ± 0.2	C ± 0.2	D ± 0.1
4	SFW4R-5/6ST__LF	9.8	8.6	3.0	5.3
5	SFW5R-5/6ST__LF	10.8	9.6	4.0	6.3
6	SFW6R-5/6ST__LF	11.8	10.6	5.0	7.3
7	SFW7R-5/6ST__LF	12.8	11.6	6.0	8.3
8	SFW8R-5/6ST__LF	13.8	12.6	7.0	9.3
9	SFW9R-5/6ST__LF	14.8	13.6	8.0	10.3
10	SFW10R-5/6ST__LF	15.8	14.6	9.0	11.3
11	SFW11R-5/6ST__LF	16.8	15.6	10.0	12.3
12	SFW12R-5/6ST__LF	17.8	16.6	11.0	13.3
13	SFW13R-5/6ST__LF	18.8	17.6	12.0	14.3
14	SFW14R-5/6ST__LF	19.8	18.6	13.0	15.3
15	SFW15R-5/6ST__LF	20.8	19.6	14.0	16.3
16	SFW16R-5/6ST__LF	21.8	20.6	15.0	17.3
17	SFW17R-5/6ST__LF	22.8	21.6	16.0	18.3
18	SFW18R-5/6ST__LF	23.8	22.6	17.0	19.3
19	SFW19R-5/6ST__LF	24.8	23.6	18.0	20.3
20	SFW20R-5/6ST__LF	25.8	24.6	19.0	21.3
21	SFW21R-5/6ST__LF	26.8	25.6	20.0	22.3
22	SFW22R-5/6ST__LF	27.8	26.6	21.0	23.3
23	SFW23R-5/6ST__LF	28.8	27.6	22.0	24.3
24	SFW24R-5/6ST__LF	29.8	28.6	23.0	25.3
25	SFW25R-5/6ST__LF	30.8	29.6	24.0	26.3
26	SFW26R-5/6ST__LF	31.8	30.6	25.0	27.3
27	SFW27R-5/6ST__LF	32.8	31.6	26.0	28.3
28	SFW28R-5/6ST__LF	33.8	32.6	27.0	29.3
29	SFW29R-5/6ST__LF	34.8	33.6	28.0	30.3
30	SFW30R-5/6ST__LF	35.8	34.6	29.0	31.3



NOTES

1. THIS PRODUCT IS THE CONNECTOR USED FOR CIC AND COPES WITH AUTOMATIC MOUNTING (SMT).
2. SEE PART DRAWINGS FOR DIMENSIONS A~D.

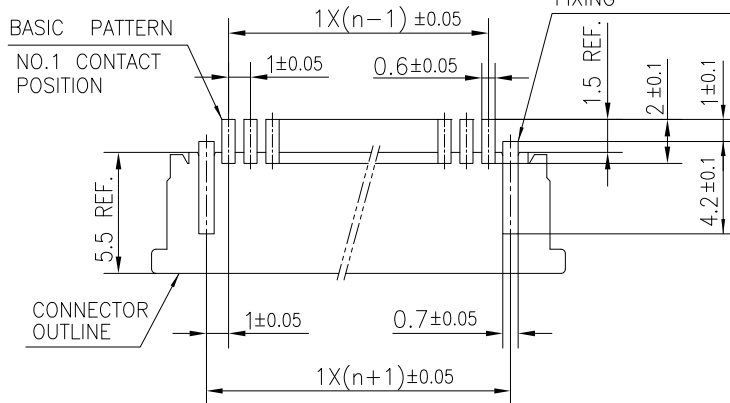
mat'l. code		surface		tolerance		projection		product family	
-		ISO 1302 ✓		ISO 406 ISO 1101				58RF	
ltr	ecn no	dr	date	tolerances unless otherwise specified		MM		title	
c				angles	linear	← →		CAT. NO. TABLE FOR 1mm SPACING SMT CONNECTOR (Cat. No. : SFW__R-5/6ST__LF)	
						scale N/A		dwg no	
				dr	S.WATANABE	2019-3-25		sheet 2 of 8	
				enrg	S.WATANABE	2019-3-25		10105270	
				chr	S-H.THIO	2019-3-26		A4	
				appd	Y.KAMEDA	2019-3-26		type Product Customer Drawing	
sheet index	revision sheet								



PT. NO.	PARTS NAME	MATERIAL	Q'TY	NOTE
1	HOUSING	PPS RESIN GLASS REINFORCED (UL94V-0)	1	COLOR:BROWN
2	SLIDER	PPS RESIN GLASS REINFORCED (UL94V-0)	1	COLOR:BEIGE
3	CONTACT	PHOSPHOR BRONZE	n	PLATING:TIN
4	MOUNTING PLATE	PHOSPHOR BRONZE	2	PLATING:TIN

n : NO. OF CONTACTS

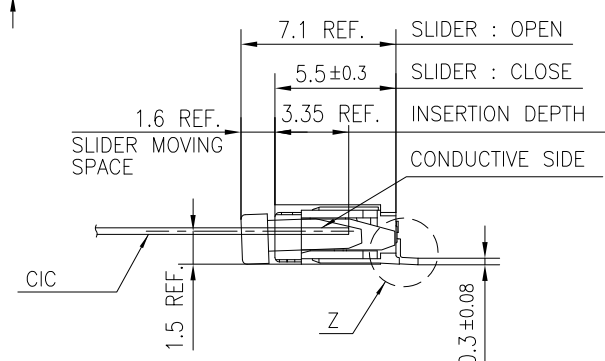
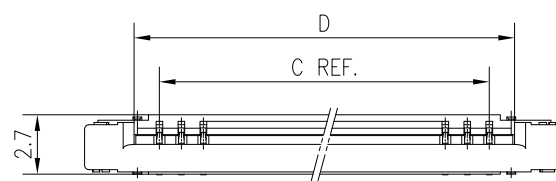
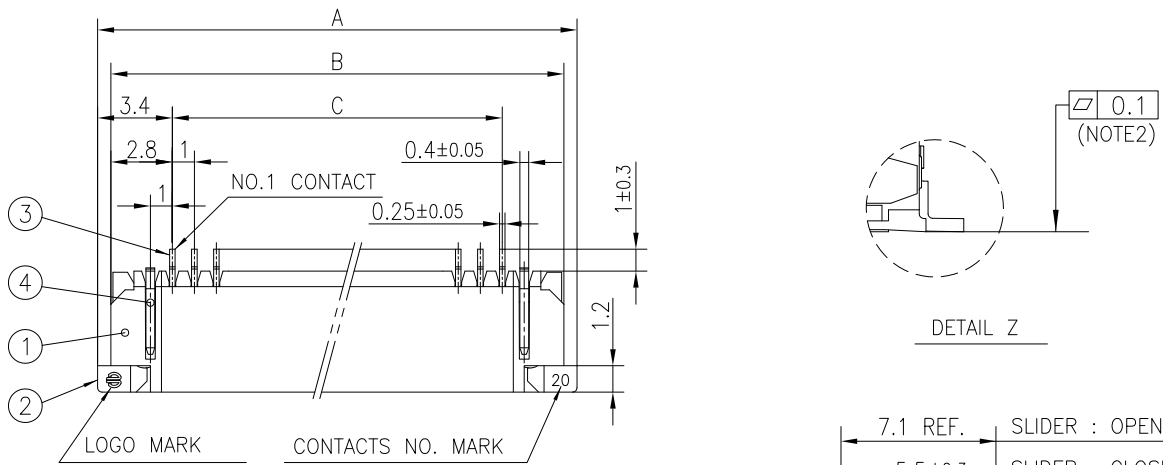
RECOMMENDED PC BOARD LAYOUT
(COMPONENT SIDE)



NOTES

1. THIS PRODUCT IS THE CONNECTOR USED FOR CIC AND COPES WITH AUTOMATIC MOUNTING (SMT).
2. FLATNESS FOR CONTACT TERMINAL HOUSING MUST BE WITHIN TOLERANCE IN Z PORTION DETAILED DRAWING.
3. THIS PRODUCT IS LOWER CONTACT TYPE CONNECTOR.
4. THIS PRODUCT MEETS EUROPEAN UNION DIRECTIVES AND OTHER COUNTRY REGULATIONS AS DESCRIBED IN GS-22-008
5. THE HOUSING WILL WITHSTAND EXPOSURE TO 260°C PEAK TEMPERATURE FOR 10 SECONDS IN A REFLOW SOLDERING OVEN.

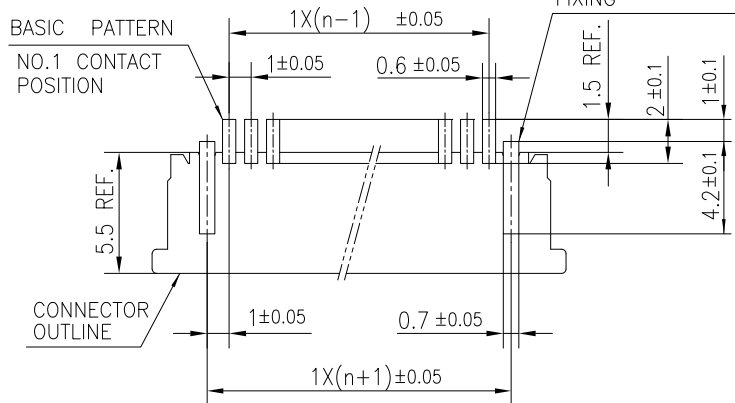
mat'l. code		surface		tolerance		projection		product family	
-		ISO 1302		ISO 406 ISO 1101				58RF	
ltr	ecn no	dr	date		tolerances unless otherwise specified		title		
c					angles		1mm SPACING SMT CONNECTOR		
					linear		(Cat. No. SFW__R-5ST__LF)		
			dr	S.WATANABE	2019-3-25	scale N/A		dwg no	
			enr	S.WATANABE	2019-3-25			sheet 3 of 8	
			chr	S-H.THIO	2019-3-26			10105270	
			appd	Y.KAMEDA	2019-3-26			size	
sheet index		revision sheet						A4	
								type Product Customer Drawing	



PT. NO.	PARTS NAME	MATERIAL	Q'TY	NOTE
1	HOUSING	PPS RESIN GLASS REINFORCED (UL94V-0)	1	COLOR:BROWN
2	SLIDER	PPS RESIN GLASS REINFORCED (UL94V-0)	1	COLOR:BEIGE
3	CONTACT	PHOSPHOR BRONZE	n	PLATING:TIN
4	MOUNTING PLATE	PHOSPHOR BRONZE	2	PLATING:TIN

n : NO. OF CONTACTS

RECOMMENDED PC BOARD LAYOUT (COMPONENT SIDE)



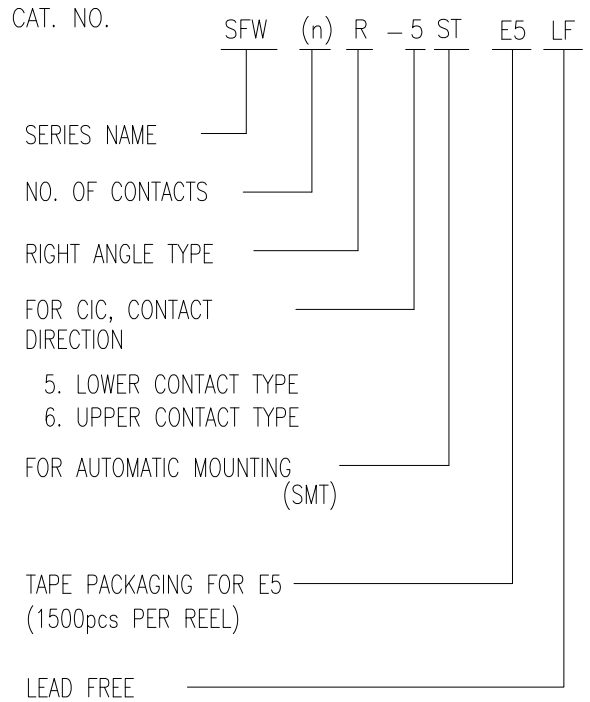
NOTES

1. THIS PRODUCT IS THE CONNECTOR USED FOR CIC AND COPES WITH AUTOMATIC MOUNTING (SMT).
2. FLATNESS FOR CONTACT TERMINAL HOUSING MUST BE WITHIN TOLERANCE IN Z PORTION DETAILED DRAWING.
3. THIS PRODUCT IS UPPER CONTACT TYPE CONNECTOR.
4. THIS PRODUCT MEETS EUROPEAN UNION DIRECTIVES AND OTHER COUNTRY REGULATIONS AS DESCRIBED IN GS-22-008
5. THE HOUSING WILL WITHSTAND EXPOSURE TO 260°C PEAK TEMPERATURE FOR 10 SECONDS IN A REFLOW SOLDERING OVEN.

mat'l. code		surface ISO 1302		tolerance ISO 406 ISO 1101		projection		product family 58RF		
ltr	ecn no	dr	date	tolerances unless otherwise specified		MM		title		
c				angles	linear	scale N/A		1mm SPACING SMT CONNECTOR (Cat. No. SFW__R-6ST__LF)		
			dr	S.WATANABE	2019-3-25	Amphenol FCI		dwg no sheet 4 of 8 size		
			enr	S.WATANABE	2019-3-25			10105270		A4
			chr	S-H.THIO	2019-3-26					
			appd	Y.KAMEDA	2019-3-26					
sheet index		revision sheet						type Product Customer Drawing		

CAT. NO. & DIMENSIONS

NO. OF CONTACTS (n)	CAT. NO. (NOTE2)	DIMENSIONS (NOTE3)		
		E MAX.	F ± 0.3	G ± 0.1
4	SFW4R-5/6STE5LF	22.4	16	—
5	SFW5R-5/6STE5LF	30.4	24	—
6	SFW6R-5/6STE5LF	30.4	24	—
7	SFW7R-5/6STE5LF	30.4	24	—
8	SFW8R-5/6STE5LF	30.4	24	—
9	SFW9R-5/6STE5LF	30.4	24	—
10	SFW10R-5/6STE5LF	30.4	24	—
11	SFW11R-5/6STE5LF	30.4	24	—
12	SFW12R-5/6STE5LF	30.4	24	—
13	SFW13R-5/6STE5LF	38.4	32	28.4
14	SFW14R-5/6STE5LF	38.4	32	28.4
15	SFW15R-5/6STE5LF	38.4	32	28.4
16	SFW16R-5/6STE5LF	38.4	32	28.4
17	SFW17R-5/6STE5LF	50.4	44	40.4
18	SFW18R-5/6STE5LF	50.4	44	40.4
19	SFW19R-5/6STE5LF	50.4	44	40.4
20	SFW20R-5/6STE5LF	50.4	44	40.4
21	SFW21R-5/6STE5LF	50.4	44	40.4
22	SFW22R-5/6STE5LF	50.4	44	40.4
23	SFW23R-5/6STE5LF	50.4	44	40.4
24	SFW24R-5/6STE5LF	50.4	44	40.4
25	SFW25R-5/6STE5LF	50.4	44	40.4
26	SFW26R-5/6STE5LF	50.4	44	40.4
27	SFW27R-5/6STE5LF	50.4	44	40.4
28	SFW28R-5/6STE5LF	62.4	56	52.4
29	SFW29R-5/6STE5LF	62.4	56	52.4
30	SFW30R-5/6STE5LF	62.4	56	52.4



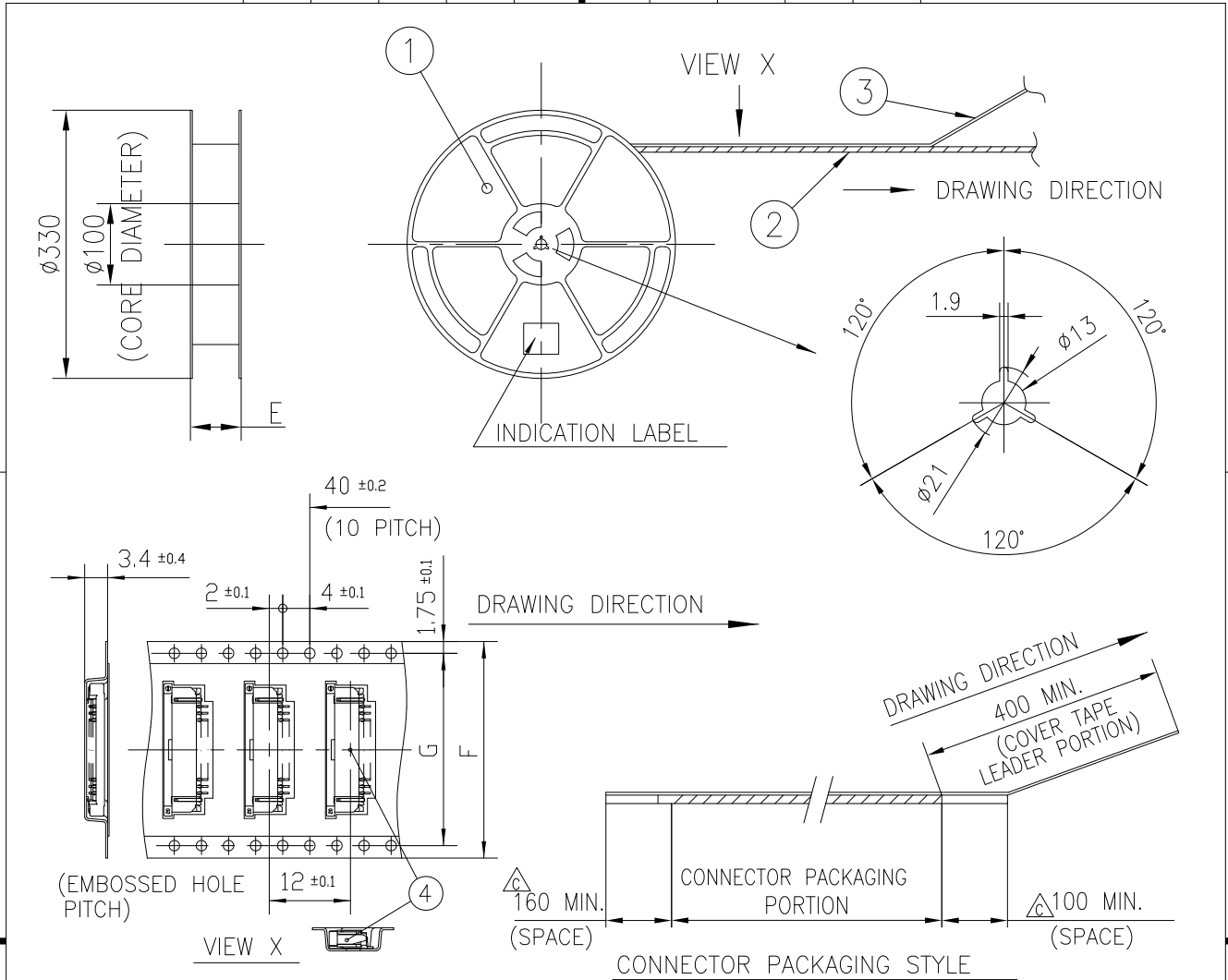
NOTES

1. THIS PRODUCT IS THE CONNECTOR USED FOR CIC AND COPES WITH AUTOMATIC MOUNTING (SMT).
2. THIS CATALOG NO. INDICATES PLASTIC TAPE PACKAGED CONNECTOR.
3. SEE PART DRAWINGS FOR DIMENSIONS E~G.

Amphenol FCI

© 2016 AFCl

mat'l. code		surface ISO 1302 <input checked="" type="checkbox"/>		tolerance ISO 406 ISO 1101		projection		product family 58RF			
ltr	ecn no	dr	date		tolerances unless otherwise specified		title				
c					angles linear		MM		CAT. NO. TABLE FOR PLASTIC TAPE PACKAGED 1mm SPACING SMT CONNECTOR (Cat. No. SFW__R-5/6STE5LF)		
			dr	S.WATANABE	2019-3-25		scale N/A		dwg no sheet 5 of 8 size		
			enr	S.WATANABE	2019-3-25		Amphenol FCI		10105270 A4		
			chr	S-H.THIO	2019-3-26						
			appd	Y.KAMEDA	2019-3-26						
sheet index		revision sheet									

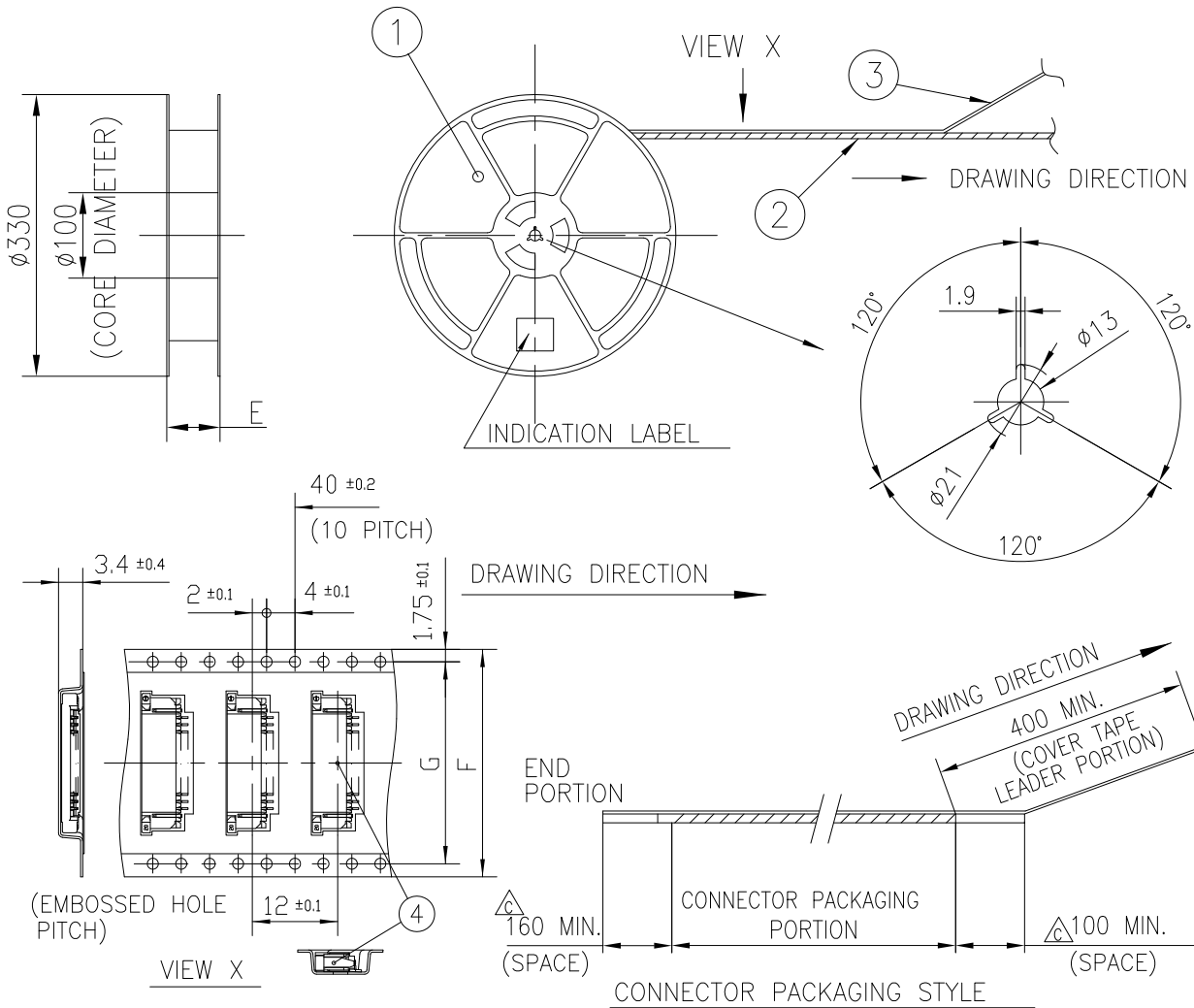


PT. NO.	PARTS NAME	CAT. NO.	MATERIAL	Q'TY	NOTE
1	REEL	_____	POLYSTYRENE	1	COLOR : WHITE or Black
2	PLASTIC (EMBOSS) TAPE	_____	△ PS or A-PET	_____	COLOR : TRANSPARENCY
3	COVER	_____	△ POLYESTER,POLYETHYLENE	_____	COLOR : TRANSPARENCY
4	CONNECTOR	SFW__R-5ST__LF	SEE SHEET 3	1500	LOWER CONTACT TYPE

NOTES

1. THIS IS PLASTIC TAPE PACKAGED CONNECTOR USED FOR CIC AND COPES WITH AUTOMATIC MOUNTING (SMT).
2. SEE JIS C 0806 (PACKING OF ELECTRONIC COMPONENTS ON CONTINUOUS TAPES (SURFACE MOUNTING DEVICES)) FOR SHAPE AND DIMENSIONS OF PLASTIC (EMBOSS) TAPE AND REEL.
3. E DIMENSION IS PORTION OF THE CORE.

mat'l. code		surface		tolerance		projection		product family	
-		ISO 1302 ✓		ISO 406 ISO 1101				58RF	
ltr	ecn no	dr	date	tolerances unless otherwise specified				title	
c				angles	linear			PLASTIC TAPE PACKAGED 1mm SPACING SMT CONNECTOR (Cat. No. SFW__R-5STE5LF)	
								dwg no sheet 6 of 8 size 10105270 A4	
				dr	S.WATANABE	2019-3-25	type Product Customer Drawing		
				enr	S.WATANABE	2019-3-25			
				chr	S-H.THIO	2019-3-26			
				appd	Y.KAMEDA	2019-3-26			
sheet index	revision sheet								



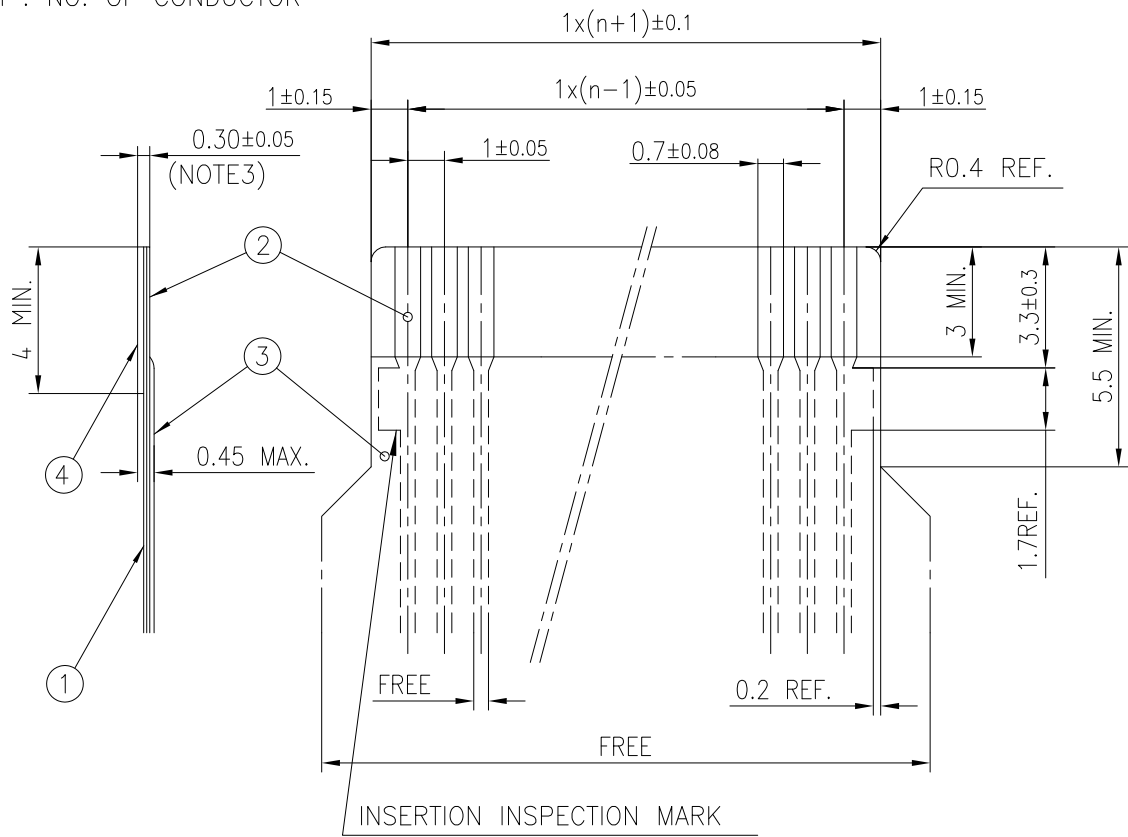
PT. NO.	PARTS NAME	CAT. NO.	MATERIAL	Q'TY	NOTE
1	REEL	_____	POLYSTYRENE	1	COLOR : WHITE or Black
2	PLASTIC (EMBOSS) TAPE	_____	△ PS or A-PET	_____	COLOR : TRANSPARENCY
3	COVER	_____	△ POLYESTER,POLYETHYLENE	_____	COLOR : TRANSPARENCY
4	CONNECTOR	SFW__R-6ST__LF	SEE SHEET4	1500	UPPER CONTACT TYPE

NOTES

- THIS IS PLASTIC TAPE PACKAGED CONNECTOR USED FOR CIC AND COPES WITH AUTOMATIC MOUNTING (SMT).
- SEE JIS C 0806 (PACKING OF ELECTRONIC COMPONENTS ON CONTINUOUS TAPES (SURFACE MOUNTING DEVICES)) FOR SHAPE AND DIMENSIONS OF PLASTIC (EMBOSS) TAPE AND REEL.
- E DIMENSION IS PORTION OF THE CORE.

mat'l. code		surface ISO 1302 <input checked="" type="checkbox"/>		tolerance ISO 406 ISO 1101		projection		product family 58RF	
ltr	ecn no	dr	date			tolerances unless otherwise specified		title	
c						angles linear ±5		PLASTIC TAPE PACKAGED 1mm SPACING SMT CONNECTOR (Cat. No. SFW__R-6STE5LF)	
			dr	S.WATANABE	2019-3-25	MM		dwg no sheet 7 of 8 size	
			enr	S.WATANABE	2019-3-25	← →		10105270 A4	
			chr	S-H.THIO	2019-3-26	scale N/A		type Product Customer Drawing	
			appd	Y.KAMEDA	2019-3-26	Amphenol FCI			
sheet index	revision sheet								

RECOMMENDED CABLE (CIC)
 n : NO. OF CONDUCTOR



PT. NO.	PARTS NAME	MATERIAL	THICKNESS (um)	
1	BASE FILM	POLYESTER OR EQUAL	75	25
2	CONDUCTOR	CARBON PASTE OVER SILVER PASTE	10 MIN.	
3	OVERLAY	POLYIMIDE OR POLYESTER OR EQUAL	—	
4	SUPPORTING TAPE	POLYESTER OR POLYIMIDE OR EQUAL	188	250

- NOTES
1. NO BURR AT EACH PORTION.
 2. NO PEELING IN COMMON USE.
 3. TOTAL THICKNESS LIMIT OF EACH MATERIAL (INCLUDING ADHESIVE AGENT) IS SPECIFIED.

mat'l. code		surface		tolerance		projection		product family	
—		ISO 1302 ✓		ISO 406 ISO 1101				58RF	
ltr	ecn no	dr	date	tolerances unless otherwise specified				title	
c				angles	linear			RECOMMENDED CABLE	
								(Cat. No. SFW__R-5/6__)	
					MM			dwg no	
					scale N/A			sheet 8 of 8	
				dr	S.WATANABE	2019-3-25		size	
				enr	S.WATANABE	2019-3-25		10105270	
				chr	S-H.THIO	2019-3-26		A4	
				appd	Y.KAMEDA	2019-3-26		type Product Customer Drawing	
sheet index	revision sheet								