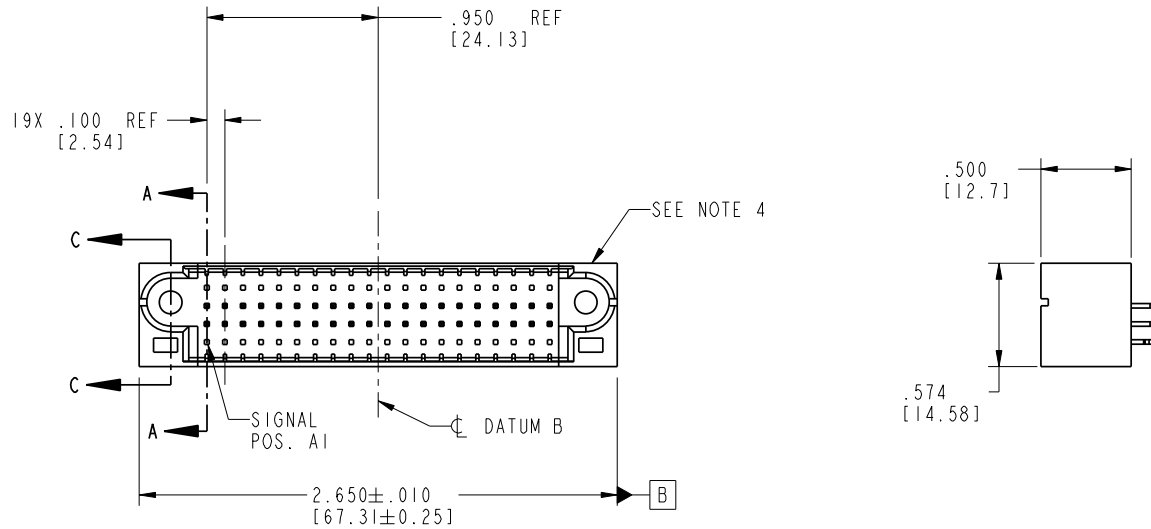


Tous droits strictement réservés. Reproduction ou communication à des tiers interdite sous quelque forme que ce soit sans autorisation écrite du propriétaire. Propriété de c FCI. Droits de reproduction FCI.



All rights strictly reserved. Reproduction or issue to third parties in any form without written authority from the proprietor. Property of FCI. Copyright FCI.

|                       |             |        |   |   |   |   |   |   |   |   |   |    |    |    |    |    |    |    |    |    |    |
|-----------------------|-------------|--------|---|---|---|---|---|---|---|---|---|----|----|----|----|----|----|----|----|----|----|
| PRODUCT NO.           | ROWS        | SIGNAL |   |   |   |   |   |   |   |   |   |    |    |    |    |    |    |    |    |    |    |
|                       |             | E1     | 1 | 2 | 3 | 4 | 5 | 6 | 7 | 8 | 9 | 10 | 11 | 12 | 13 | 14 | 15 | 16 | 17 | 18 | 19 |
| 51952-059--<br>NOTE 3 | 0<br>B<br>A |        |   |   |   |   |   |   |   |   |   |    |    |    |    |    |    |    |    |    |    |



| CODE | DIM "M" MATING LENGTH | CONTACT TYPE |
|------|-----------------------|--------------|
| E    | .270 [6.86]           | SIGNAL       |
| HA   | N/A [N/A]             | HOLD-DOWN    |
| X    | OMITTED               | OMITTED      |

|                       |           |      |          |                                       |         |          |                |                        |           |  |
|-----------------------|-----------|------|----------|---------------------------------------|---------|----------|----------------|------------------------|-----------|--|
| mat'l code SEE NOTE 2 |           |      |          | tolerances unless otherwise specified |         | CUSTOMER |                | <br>www.fciconnect.com |           |  |
| lir                   | ecn no.   | dr   | date     | linear                                | COPY    |          | projection     |                        | title     |  |
| A                     | DG05-0029 | SLUO | 3/7/05   | .XX±.01/0.X±0.3                       | A       |          |                |                        | 80 S      |  |
| B                     | DG05-0515 | RYAN | 12/21/05 | .XXX±.005/0.XX±0.13                   | INCH/MM |          | product family |                        | PwrBlade  |  |
|                       |           |      |          | .XXX±.0020/0.XXX±0.051                | scale   |          | size           |                        | dwg no    |  |
|                       |           |      |          | angles 0°±2°                          | 1:1     |          | A              |                        | 51952-059 |  |
|                       |           |      |          | dr SLUO 3/7/05                        |         |          | code           |                        | 213       |  |
|                       |           |      |          | enrg SLUO 3/7/05                      |         |          | sheet          |                        | 1 of 4    |  |
|                       |           |      |          | chr VICTOR LIN 3/7/05                 |         |          |                |                        |           |  |
|                       |           |      |          | appd JOSEPH HSIA 3/7/05               |         |          |                |                        |           |  |
| sheet index           | revision  | B    | B        | B                                     | B       |          |                |                        |           |  |
|                       | sheet     | 1    | 2        | 3                                     | 4       |          |                |                        |           |  |

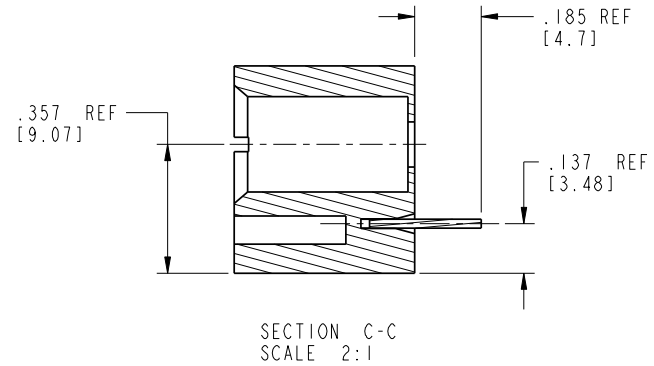
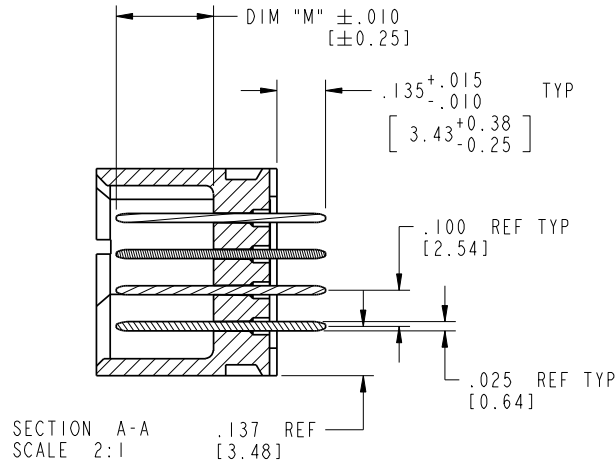
cage code 22526

Pro/E

Tous droits strictement reserves. Reproduction ou communication a des tiers interdite sans quelque forme que ce soit sans autorisation écrite du propriétaire. Propriete de c FCI. Droits de reproduction FCI.

All rights strictly reserved. Reproduction or issue to third parties in any form without is not permitted without written authority from the proprietor. Property of FCI. Copyright FCI.

PRODUCT NUMBER  
51952-059--  
NOTE 3



|             |         |                |      |            |                       |                                       |  |                |  |                        |  |
|-------------|---------|----------------|------|------------|-----------------------|---------------------------------------|--|----------------|--|------------------------|--|
| mat'l code  |         |                |      | SEE NOTE 2 |                       | tolerances unless otherwise specified |  | CUSTOMER       |  | A<br>FCI               |  |
| lir         | ecr no. | dr             | date | linear     | .XX±.01/0.X±0.3       | COPY                                  |  | projection     |  | www.fciconnect.com     |  |
| B           |         |                |      |            | .XXX±.005/0.XX±0.13   |                                       |  | title          |  | 80 S                   |  |
|             |         |                |      | angles     | .XXX±.002/0.XXX±0.051 |                                       |  | INCH/MM        |  | VERTICAL SOLDER HEADER |  |
|             |         |                |      | dr         | 0°±2°                 | SLUO 3/7/05                           |  | product family |  | PwrBlade               |  |
|             |         |                |      | enrg       |                       | SLUO 3/7/05                           |  | size           |  | 213                    |  |
|             |         |                |      | chr        |                       | VICTOR LIN 3/7/05                     |  | scale          |  | A 51952-059            |  |
|             |         |                |      | appd       |                       | JOSEPH HSIA 3/7/05                    |  | sheet          |  | 2 of 4                 |  |
| sheet index |         | revision sheet |      |            |                       |                                       |  |                |  |                        |  |

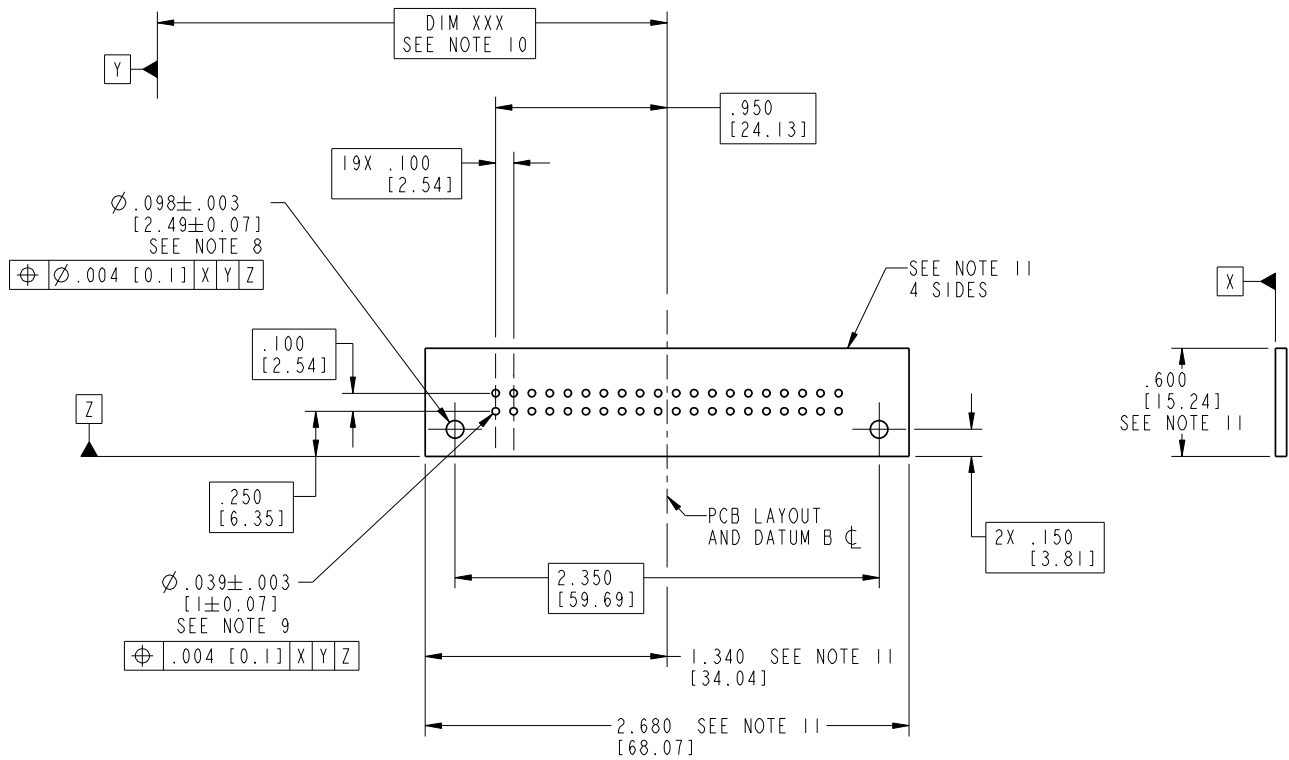
code code 22526

Pro/E

Tous droits strictement reserves. Reproduction ou communication a des tiers interdite sous quelque forme que ce soit sans autorisation écrite du propriétaire. Propriété de c FCI. Droits de reproduction FCI.

All rights strictly reserved. Reproduction or issue to third parties in any form without is not permitted without written authority from the proprietor. Property of FCI. Copyright FCI.

PRODUCT NUMBER  
51952-059\_\_  
NOTE 3



|             |         |                |      |            |                       |                                       |        |          |            |                        |  |  |
|-------------|---------|----------------|------|------------|-----------------------|---------------------------------------|--------|----------|------------|------------------------|--|--|
| mat'l code  |         |                |      | SEE NOTE 2 |                       | tolerances unless otherwise specified |        | CUSTOMER |            | <br>www.fciconnect.com |  |  |
| lfr         | ecn no. | dr             | date | linear     | .XX±.01/0.X±0.3       |                                       | COPY   |          | projection | title                  |  |  |
| B           |         |                |      |            | .XXX±.005/0.XX±0.13   |                                       | 80 S   |          |            | VERTICAL SOLDER HEADER |  |  |
|             |         |                |      |            | .XXX±.002/0.XXX±0.051 |                                       |        |          |            | product family         |  |  |
|             |         |                |      |            | angles                | 0°±2°                                 |        | INCH/MM  |            | PwrBlade               |  |  |
|             |         |                |      |            | dr                    | SLUO                                  | 3/7/05 | scale    |            | code                   |  |  |
|             |         |                |      | enrg       | SLUO                  | 3/7/05                                | 1:1    |          | size       |                        |  |  |
|             |         |                |      | chr        | VICTOR LIN            | 3/7/05                                |        |          | dwg no     |                        |  |  |
|             |         |                |      | appd       | JOSEPH HSIA           | 3/7/05                                |        |          | 51952-059  |                        |  |  |
| sheet index |         | revision sheet |      |            |                       |                                       |        |          |            | sheet                  |  |  |
|             |         |                |      |            |                       |                                       |        |          |            | 3 of 4                 |  |  |

cage code 22526

Tous droits strictement reserves. Reproduction ou communication a des tiers interdite sous quelque forme que ce soit sans autorisation écrite du propriétaire. Propriete de c FCI. Droits de reproduction FCI.

**A**  
**FCI**

All rights strictly reserved. Reproduction or issue to third parties in any form whatever is not permitted without written authority from the proprietor. Property of FCI. Copyright FCI.

A

B

PRODUCT NUMBER  
51952-059\_\_  
NOTE 3

NOTES:

1. DIMENSIONS AND TOLERANCES ARE IN ACCORDANCE WITH ASME Y14.5M, 1994 UNLESS OTHERWISE SPECIFIED.

CONNECTOR NOTES:

② HOUSING MATERIAL: UL 94 V-0 GLASS FILLED HIGH-TEMP THERMOPLASTIC

SIGNAL PIN MATERIAL: COPPER ALLOY

3. PLATING:

51952-059: SIGNAL PIN: 30u"/0.76um Au OVER 50u"/1.27um Ni ON THE CONTACT AREA  
AND 100u"/2.54um SnPb OVER 50u"/1.27um Ni ON THE TERMINATION AREA

51952-059LF: SIGNAL PIN: 30u"/0.76um Au OVER 50u"/1.27um Ni ON THE CONTACT AREA  
AND 78u"/2.00um Sn OVER 50u"/1.27um Ni ON THE TERMINATION AREA

PART NUMBER 51952-059LF MEETS EUROPEAN UNION DIRECTIVE AND OTHER COUNTRY REGULATIONS AS DECCRIBED IN GS-22-008.

THE HOUSING WILL WITHSTAND EXPOSURE TO 260° PEAK TEMPERATURE FOR 10 SECONDS IN A WAVE SOLDER APPLICATION WITH A CIRCUIT BOARD.

④ MANUFACTURER'S NAME, P/N, AND DATE CODE TO APPEAR ON THIS SURFACE.

5. PRODUCT SPECIFICATION GS-12-149.  
APPLICATION SPECIFICATION BUS-20-067.

6. PACKAGED IN TRAYS.

PCB NOTES:

7. ALL HOLE DIAMETERS ARE FINISHED HOLE SIZE.

8. MOUNTING HOLES, WHERE APPLICABLE, ARE UNPLATED.

⑨  $\varnothing .0453 \pm .0010$  [1.151 ± 0.025] DRILLED HOLES PLATED WITH

.0003 [0.008] MIN SnPb OVER .001 [0.03]  
TO .003 [0.08] Cu PLATING TO ACHIEVE  
 $\varnothing .040 \pm .003$  [1.02 ± .07] HOLE.

⑩ "DIM XXX" TO BE DETERMINED BY THE CUSTOMER.

⑪ CONNECTOR KEEP-OUT ZONE.

|             |                |    |      |            |                                       |        |          |  |                        |          |                    |        |
|-------------|----------------|----|------|------------|---------------------------------------|--------|----------|--|------------------------|----------|--------------------|--------|
| mat'l code  |                |    |      | SEE NOTE 2 | tolerances unless otherwise specified |        | CUSTOMER |  | <b>A</b><br><b>FCI</b> |          | www.fciconnect.com |        |
| lfr         | ecn no.        | dr | date | linear     | .XX±.01/0.X±0.3                       |        | COPY     |  | projection             | title    |                    |        |
| B           |                |    |      |            | .XXX±.005/0.XX±0.13                   |        |          |  |                        | 80 S     |                    |        |
|             |                |    |      | angles     | .XXX±.002/0.XXX±0.051                 |        | INCH/MM  |  | product family         | PwrBlade |                    | code   |
|             |                |    |      |            | 0° ± 2°                               |        | scale    |  |                        | size     | dwg no             |        |
|             |                |    |      | dr         | SLUO                                  | 3/7/05 | 1:1      |  | A                      |          | 51952-059          |        |
|             |                |    |      | enrg       | SLUO                                  | 3/7/05 |          |  |                        |          |                    | 4 of 4 |
|             |                |    |      | chr        | VICTOR LIN                            | 3/7/05 |          |  |                        |          |                    |        |
|             |                |    |      | appd       | JOSEPH HSIA                           | 3/7/05 |          |  |                        |          |                    |        |
| sheet index | revision sheet |    |      |            |                                       |        |          |  |                        |          |                    |        |

A

B

1 | 2

3 |

4

1 | 2

Pro/E

3 |

cage code 22526

4