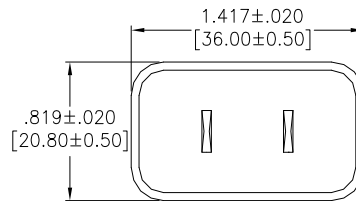
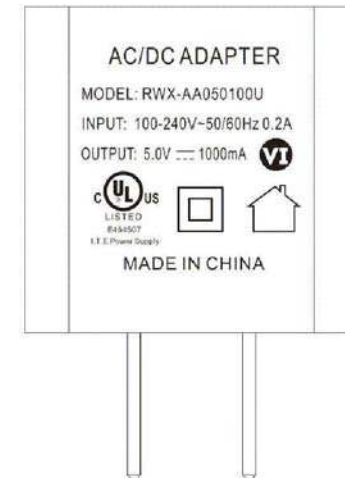
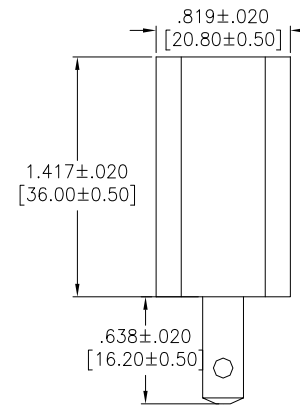
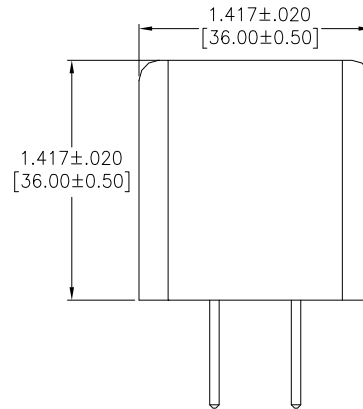
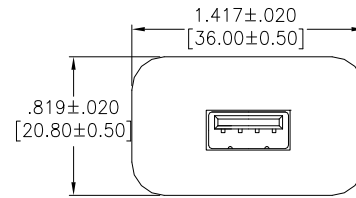


APPROVED: _____

DATE: _____ TITLE: _____

Rev	AWO #	Description	Date	Appr
-		RELEASED	3/23/21	
A		UPDATE DRAWING	4/27/21	WX/JC
B		UPDATE DRAWING	6/10/21	JJ



SPECIFICATIONS:

Material:
Case, cover & Chassis: PC, rated UL94V-0, Color: Black
AC Blades: Brass, Nickel plated

Electrical:
Input:
Voltage: 100Vac to 240Vac
Current: 0.4A Max. @ 100Vac input & max load
Frequency: 50Hz / 60Hz

Output:
Voltage: 5.0Vdc
Current: 3.0A max. (Current Range: 0 ~ 1.0A)
Load Regulation: ±5%

Insulation Resistance: 10 Mohms min @ 500VDC
Dielectric withstanding voltage (Hi-pot): 3,000V AC For 1 Minute
Leakage Current: 30mA max. @ 230V AC/50Hz
Temperature Rating:
Operating Temperature: 0°C to +45°C
Storage Temperature: -25°C to +85°C

Environmental:
Lead free, RoHS compliant.

UNLESS OTHERWISE SPECIFIED ALL DIMENSIONS ARE INCHES [MM]. TOLERANCES: EXCEPT AS NOTED		
INCHES	HOLES	
.X ±.10	ØX	±.10
.XX ±.020	ØXX	±.015
.XXX ±.015	ØXXX	±.010

ADAM TECH

909 Rahway Avenue,
Union, NJ 07083
Phone: 908-687-5000
Fax: 908-687-5710

DRAWN	WX	3/23/21
CHECKED	AC	3/23/21
APPROVED		

TITLE
**AC POWER ADAPTER, NEMA 1-15 TO
USB TYPE A, 5V, 1 AMP, COLOR WHITE**

THIS DRAWING CONTAINS INFORMATION THAT IS PROPRIETARY AND SHOULD NOT BE USED WITHOUT PRIOR WRITTEN PERMISSION FROM ADAM TECH

SIZE X	PART NO. PA-010	REV. B
-----------	--------------------	-----------

REF: _____ SCALE: NTS SHEET 1 OF 1