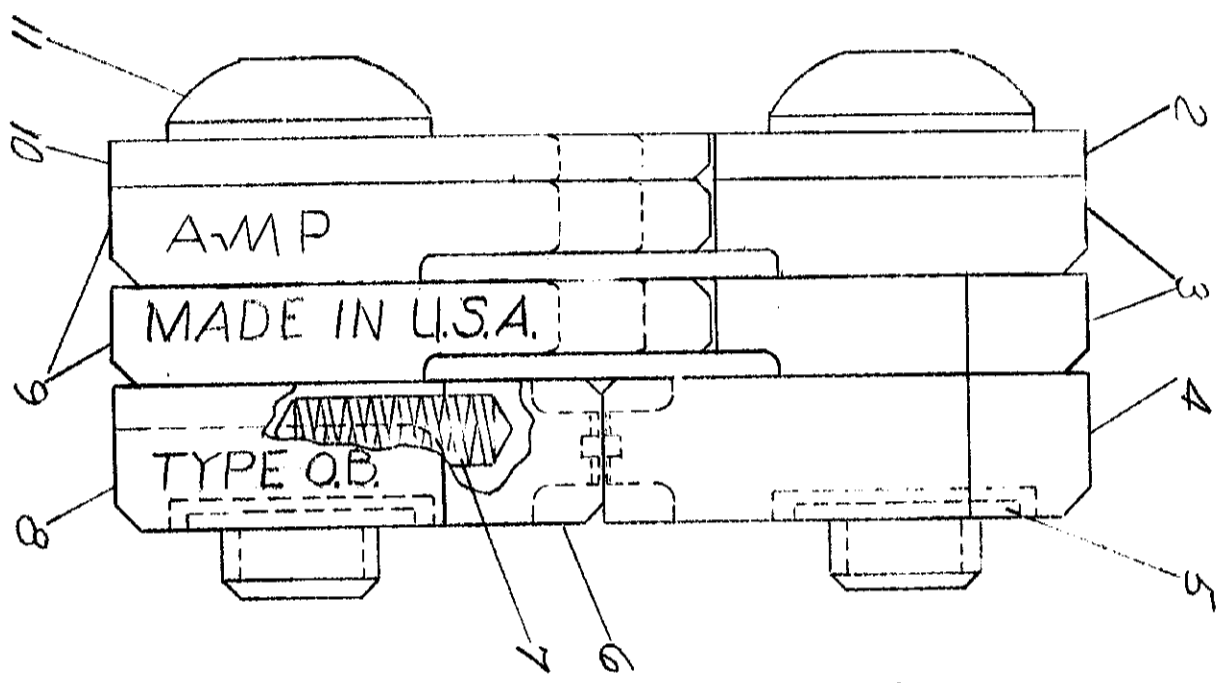
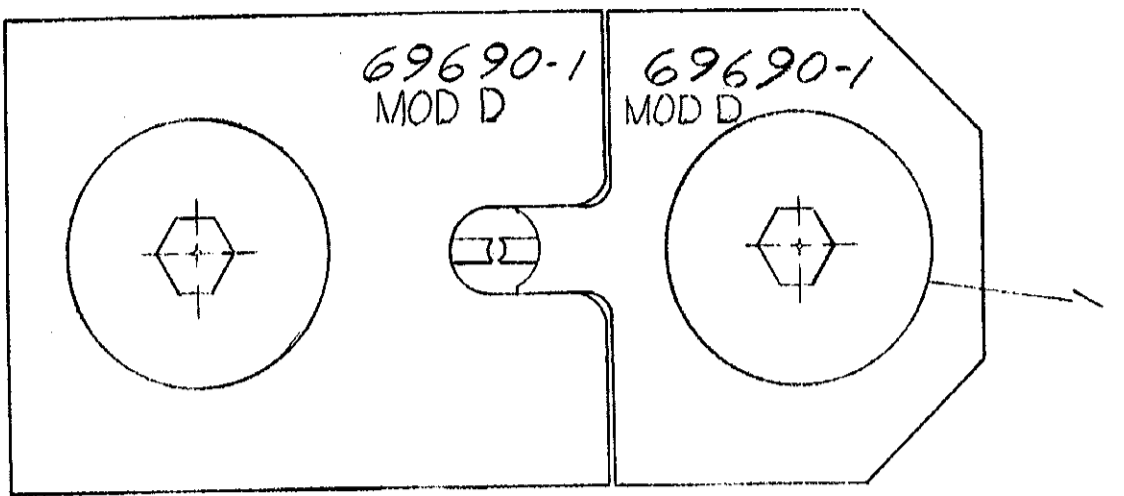


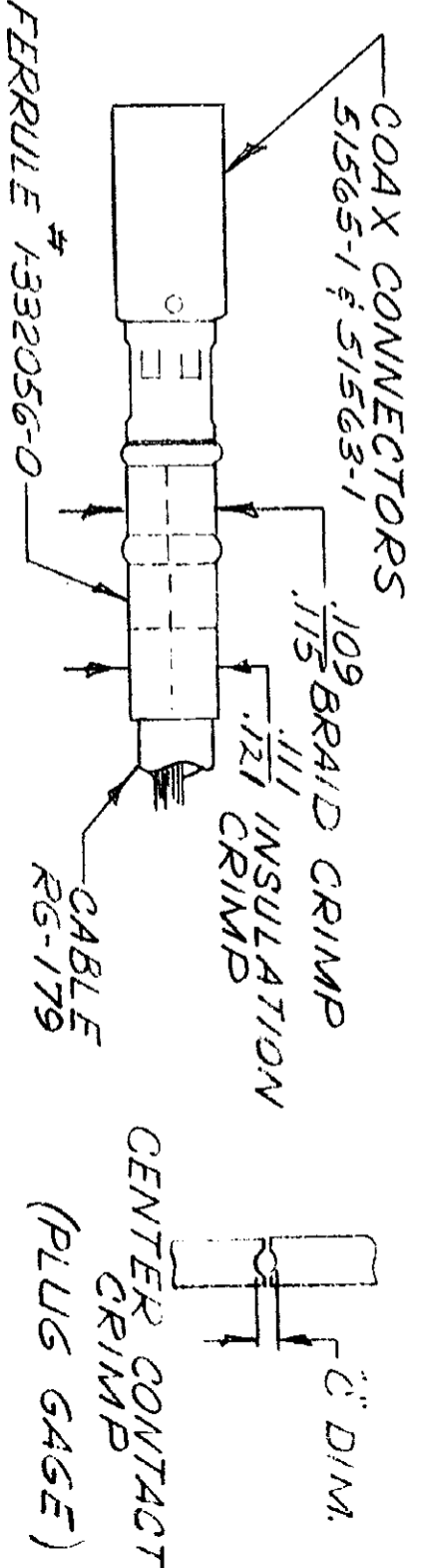
PRINT DIST  
8

DIMENSIONS IN INCHES. DO NOT SCALE PRINT



"C" DIM	NO GO
GO	.013
	.017

METHOD OF GAGING CRIMP DIMENSIONS  
THE CRIMP DIMENSIONS APPLY ONLY TO THE  
ABOVE COMBINATIONS, ON A CRIMPED PRODUCT.



SUPERSEDED BY 1.5.2024.3

QTY	DRG NO	DRG SIZE	NUMBER	NAME	REMARKS	ITEM NO
1	5-306105-4		1	SCREEN - SPECIAL		11
1	306740-1		1	INDENTER-INSULATION		10
2	306742		2	INDENTER-BRAID		9
1	306543-1		1	BARREL-BLOCK		8
2	305182		2	SPRING		7
1	306544-8		1	INSERT-BARREL-LOWER		6
2	1-21046-3		2	RING-RETAINING		5
1	306738-2		1	INSERT-BARREL-UPPER		4
2	306741		2	ANVIL-BRAID		3
1	1-45923-2		1	ANVIL-INSULATION		2
1	306105-9		1	SCREW-SPECIAL		1

REVISION RECORD	DATE	CHK	DR
A REVISED	11-29-64	AF	PL
B REVISED	9-21-64	AF	BS
C REVISED	6-27-64	AF	BS
D REVISED	1-14-70	PL	BS
E REVISED	5-14-73	PL	BS
F REVISED	5-14-73	PL	BS
G REVISED	5-14-73	PL	BS
H REVISED	5-14-73	PL	BS
I REVISED	5-14-73	PL	BS
J REVISED	5-14-73	PL	BS
K REVISED	5-14-73	PL	BS
L REVISED	5-14-73	PL	BS
M REVISED	5-14-73	PL	BS
N REVISED	5-14-73	PL	BS
O REVISED	5-14-73	PL	BS
P REVISED	5-14-73	PL	BS
Q REVISED	5-14-73	PL	BS
R REVISED	5-14-73	PL	BS
S REVISED	5-14-73	PL	BS
T REVISED	5-14-73	PL	BS
U REVISED	5-14-73	PL	BS
V REVISED	5-14-73	PL	BS
W REVISED	5-14-73	PL	BS
X REVISED	5-14-73	PL	BS
Y REVISED	5-14-73	PL	BS
Z REVISED	5-14-73	PL	BS

REQUIRED PER ASSEMBLY

DR: B. K. H. 1-28-66  
 DE: J. H. 2-1-66  
 CR: J. H. 2-1-66

WIRE - RANGE - INSULATION: RG-179  
 TOLERANCE EXCEPT AS NOTED: ± 0.015  
 SCALE: 4-1

CLASS: -1-  
 TYPE: SUB MIN COAX  
 USE: M B 69690-1 D

NAME: DIE ASSEMBLY MOD D

DATE: 6-22-66

CUSTOMER COPY  
REFERENCE ONLY



AMP INCORPORATED  
HARRISBURG, PENNA.