

## Han K 6/12 POS. M INSERT

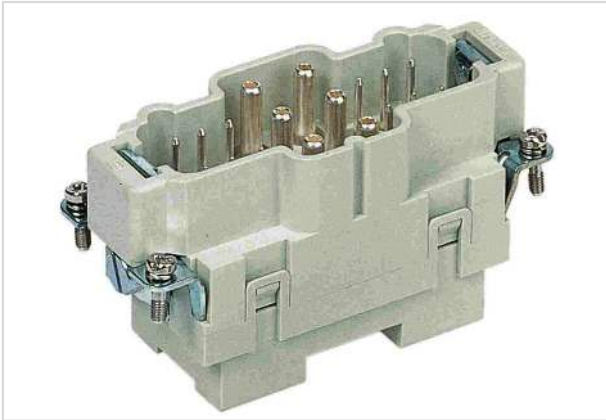


Image is for illustration purposes only. Please refer to product description.

Part number	09 38 018 2601
Specification	Han K 6/12 POS. M INSERT
HARTING eCatalogue	<a href="https://b2b.harting.com/09380182601">https://b2b.harting.com/09380182601</a>

### Identification

Category	Inserts
Series	Han-Com <sup>®</sup>
Identification	Han <sup>®</sup> K 6/12

### Version

Termination method	Axial screw termination / screw termination
Gender	Male
Size	16 B
Number of contacts	18
Number of signal contacts	12
Number of power contacts	6
PE contact	Yes

### Technical characteristics

Conductor cross-section	2.5 ... 8 mm <sup>2</sup> 0.2 ... 2.5 mm <sup>2</sup> Signal
Wire outer diameter	≤6.1 mm
Rated current	40 A
Rated voltage	690 V
Rated impulse voltage	8 kV
Pollution degree	3
Rated current (signal)	10 A
Rated voltage conductor-earth (signal)	230 V



**Pushing Performance**  
 Since 1945

## Technical characteristics

Rated voltage conductor-conductor (signal)	400 V
Rated impulse voltage (signal)	4 kV
Pollution degree (signal)	3
Rated current acc. to UL	40 A
Rated voltage acc. to UL	600 V
Rated current acc. to UL (signal)	10 A
Rated voltage acc. to UL (signal)	600 V
Rated current acc. to CSA	40 A
Rated voltage acc. to CSA	300 V
Rated current acc. to CSA (signal)	10 A
Rated voltage acc. to CSA (signal)	300 V
Insulation resistance	$>10^{10} \Omega$
Contact resistance	$\leq 0.5 \text{ m}\Omega$
Contact resistance, signal area	$\leq 3 \text{ m}\Omega$
Stripping length	5 ... 6 mm @ 2.5 mm <sup>2</sup>
	5 ... 6 mm @ 4 mm <sup>2</sup>
	8 ... 9 mm @ 6 mm <sup>2</sup>
	7.5 mm Signal
Tightening torque	1.5 Nm @ 2.5 mm <sup>2</sup>
	1.5 Nm @ 4 mm <sup>2</sup>
	2 Nm @ 6 mm <sup>2</sup>
	0.5 Nm Signal
Limiting temperature	-40 ... +125 °C
Mating cycles	$\geq 500$

## Material properties

Material (insert)	Polycarbonate (PC)
Colour (insert)	RAL 7032 (pebble grey)
Material (contacts)	Copper alloy
Surface (contacts)	Silver plated
Material flammability class acc. to UL 94	V-0
RoHS	compliant with exemption
RoHS exemptions	6(c): Copper alloy containing up to 4 % lead by weight
ELV status	compliant with exemption
China RoHS	50
REACH Annex XVII substances	Not contained



**Pushing Performance**  
Since 1945

## Material properties

REACH ANNEX XIV substances	Not contained
REACH SVHC substances	Yes
REACH SVHC substances	Lead
ECHA SCIP number	5dbb3851-b94e-4e88-97a1-571845975242
California Proposition 65 substances	Yes
California Proposition 65 substances	Lead Nickel
Fire protection on railway vehicles	EN 45545-2 (2020-08)
Requirement set with Hazard Levels	R22 (HL 1-3) R23 (HL 1-3)

## Specifications and approvals

Specifications	IEC 60664-1 IEC 61984
Approvals	DNV GL

## Commercial data

Packaging size	1
Net weight	134 g
Country of origin	Romania
European customs tariff number	85366990
GTIN	5713140056435
eCl@ss	27440205 Contact insert for industrial connectors