

Header - PC 6-16/ 4-G1U-10,16 - 1996252

Please be informed that the data shown in this PDF Document is generated from our Online Catalog. Please find the complete data in the user's documentation. Our General Terms of Use for Downloads are valid (<http://phoenixcontact.com/download>)

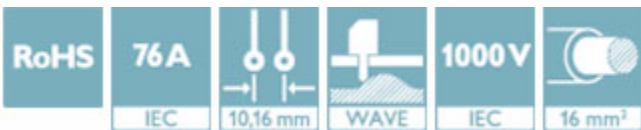
Header, nominal current: 76 A, rated voltage (III/2): 1000 V, number of positions: 4, pitch: 10.16 mm, color: green, contact surface: Silver, mounting: Wave soldering



The figure shows a 5-pos. version of the product

Why buy this product

- Well-known mounting principle allows worldwide use
- Maximum flexibility when it comes to device design – one header for connectors with different connection technologies



Key Commercial Data

| | |
|--------------------------------------|---------------|
| Packing unit | 1 STK |
| Minimum order quantity | 50 STK |
| GTIN | |
| GTIN | 4046356037990 |
| Weight per Piece (excluding packing) | 19.190 g |
| Custom tariff number | 85366930 |
| Country of origin | Poland |

Technical data

Dimensions

| | |
|-----------------------|----------|
| Length [l] | 34 mm |
| Pitch | 10.16 mm |
| Dimension a | 30.48 mm |
| Width [w] | 43.68 mm |
| Constructional height | 13.4 mm |

Header - PC 6-16/ 4-G1U-10,16 - 1996252

Technical data

Dimensions

| | |
|--------------------------|--------------|
| Height [h] | 17.4 mm |
| Length of the solder pin | 4 mm |
| Pin dimensions | 0.8 x 1.2 mm |
| Pin spacing | 1.16 mm |
| Hole diameter | 1.7 mm |

General

| | |
|--|---|
| Range of articles | PC 6-16/..-G1U |
| Insulating material group | I |
| Rated surge voltage (III/3) | 8 kV |
| Rated surge voltage (III/2) | 8 kV |
| Rated surge voltage (II/2) | 6 kV |
| Rated voltage (III/3) | 1000 V |
| Rated voltage (III/2) | 1000 V |
| Rated voltage (II/2) | 1000 V |
| Connection in acc. with standard | EN-VDE |
| Nominal current I _N | 76 A (41 A in combination with PC 6 plug) |
| Maximum load current | 76 A (41 A in combination with PC 6 plug) |
| Insulating material | PA |
| Flammability rating according to UL 94 | V0 |
| Color | green |
| Number of positions | 4 |

Standards and Regulations

| | |
|--|--------|
| Connection in acc. with standard | EN-VDE |
| | CUL |
| Flammability rating according to UL 94 | V0 |

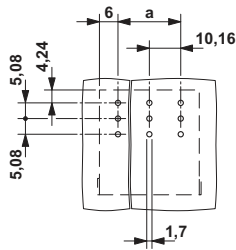
Environmental Product Compliance

| | |
|------------|---|
| China RoHS | Environmentally friendly use period: unlimited = EFUP-e |
| | No hazardous substances above threshold values |

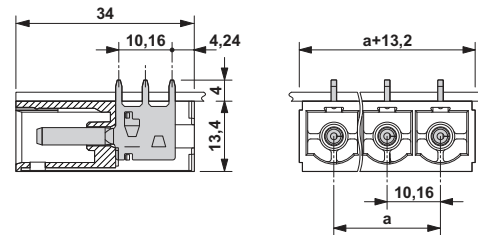
Drawings

Header - PC 6-16/ 4-G1U-10,16 - 1996252

Drilling diagram



Dimensional drawing



Classifications

eCl@ss

| | |
|------------|----------|
| eCl@ss 4.0 | 272607xx |
| eCl@ss 4.1 | 27260701 |
| eCl@ss 5.0 | 27260701 |
| eCl@ss 5.1 | 27260701 |
| eCl@ss 6.0 | 27260704 |
| eCl@ss 7.0 | 27440402 |
| eCl@ss 8.0 | 27440402 |
| eCl@ss 9.0 | 27440402 |

ETIM

| | |
|----------|----------|
| ETIM 3.0 | EC001121 |
| ETIM 4.0 | EC002637 |
| ETIM 5.0 | EC002637 |
| ETIM 6.0 | EC002637 |

UNSPSC

| | |
|---------------|----------|
| UNSPSC 6.01 | 30211810 |
| UNSPSC 7.0901 | 39121409 |
| UNSPSC 11 | 39121409 |
| UNSPSC 12.01 | 39121409 |
| UNSPSC 13.2 | 39121409 |

Approvals

Approvals

Approvals


SEV / IECCEB Scheme / EAC / cULus Recognized


Header - PC 6-16/ 4-G1U-10,16 - 1996252

Approvals


Ex Approvals

Approval details

| | | | |
|--------------------|---|---|---------|
| SEV |  | https://www.electrosuisse.ch/en/meta/shop/product-certificates.html | IK-3431 |
| | | | |
| Nominal current IN | 76 A | | |
| Nominal voltage UN | 1000 V | | |

| | | | |
|--------------------|---|---|---------|
| IECEE CB Scheme |  | http://www.iecee.org/ | CH-8077 |
| | | | |
| Nominal current IN | 76 A | | |
| Nominal voltage UN | 1000 V | | |

| | | | |
|-----|---|--|---------|
| EAC |  | | B.01742 |
|-----|---|--|---------|

| | | | |
|--------------------|---|---|-----------------|
| cULus Recognized |  | http://database.ul.com/cgi-bin/XYV/template/LISEXT/1FRAME/index.htm | E60425-20040202 |
| | B | C | D |
| Nominal current IN | 66 A | 66 A | 5 A |
| Nominal voltage UN | 300 V | 300 V | 600 V |

Accessories

Accessories

Coding element

Header - PC 6-16/ 4-G1U-10,16 - 1996252

Accessories

Coding profile - CP-PC RD - 1701967



Coding profile, for plugging into the coding ribs of the plug at a later date, insulating material, color: Red

Additional products

Printed-circuit board connector - PCU 6/ 4-STD-10,16 - 1922653



Plug component, nominal current: 41 A, rated voltage (III/2): 1000 V, number of positions: 4, pitch: 10.16 mm, connection method: Screw connection with tension sleeve, color: green, contact surface: Silver, mounting: Direct mounting