

P.C.B LAYOUT
t: 1.6±0.1mm

REMARK:

1.CHARACTERISTICS:

RATED VOLTAGE: 250V
RATED CURRENT: 5AMP
CONTACT RESISTANCE: 25mohms MAX.INITIAL;40mohms MAX.AFTER.
INSULATION RESISTANCE: 5000Mohms MIN.at 500V DC
DIELECTRIC STRENGTH: 1000VRMS
OPERATING TEMPERATURE RANGE: -55°C~105°C
INSERTION/EXTRACTION FORCE PER CONTACT:5N Max./0.3N Min.
MATING/UNMATING CYCLES:50MATINGS MIN.

2.MATERIAL:

INSULATORS: GLASS-FILLED THERMOPLASTIC UL94V-0, COLOR IN BLACK.
CONTACTS: COPPER ALLOY, SELECTIVE GOLD ON CONTACT AREA,
100u" Min MATTE TIN TOP OVER SOLDER AREA,
30u" Min NICKEL UNDER PLATE.
SHELL: STEEL,100u" Min NICKEL TOP OVER,
50u" Min COPPER UNDER PLATE.
CLINCH NUT:COPPER ALLOY,100u" Min MATTE TIN PLATED.

3. PART NUMBER DESCRIPTION:

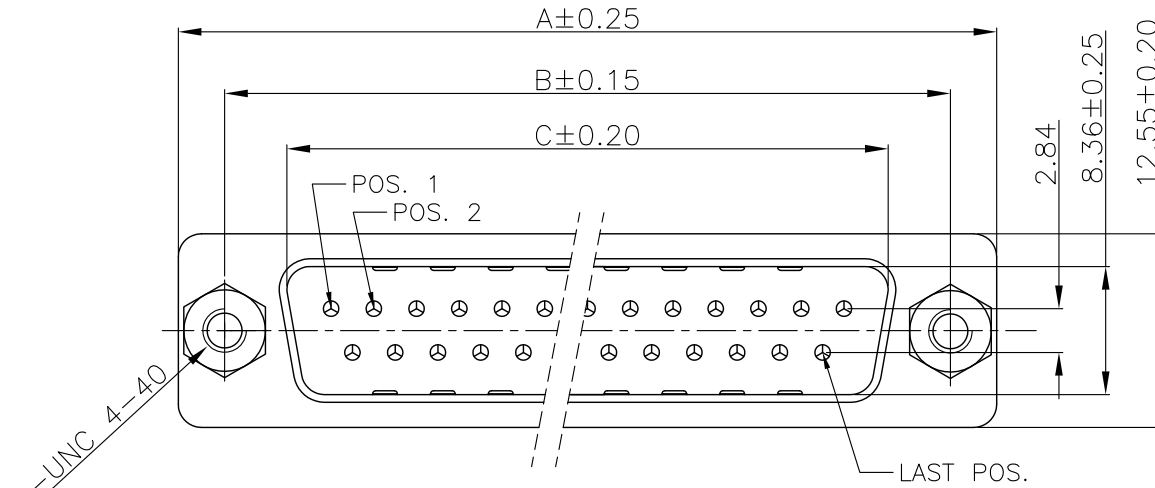
10090096-P XX 4 X LF

SERIES NO. _____
TYPE _____
P: PIN (MALE)
NUMBER OF CONTACTS _____
09: 9-PIN
15: 15-PIN
25: 25-PIN
37: 37-PIN
LF: ROHS COMPLIANT
FLANGE MOUNTING OPTION
X: UNC #4-40 CLINCHNUTS
CONTACT FINISH
4: GOLD FLASH

| POS. | PART NO. | THREAD TYPE |
|------|------------------|-------------|
| 9 | 10090096-P094XLF | UNC #4-40 |
| 15 | 10090096-P154XLF | UNC #4-40 |
| 25 | 10090096-P254XLF | UNC #4-40 |
| 37 | 10090096-P374XLF | UNC #4-40 |

| POS. | A | B | C | D | G | H |
|------|-------|-------|-------|-------|------|------------------------------------|
| 9 | 30.81 | 24.99 | 16.92 | 19.28 | 2.74 | 5.90 ^{+0.15} ₀ |
| 15 | 39.24 | 33.32 | 25.25 | 27.65 | 2.74 | 5.90 ^{+0.15} ₀ |
| 25 | 53.04 | 47.04 | 38.96 | 41.10 | 2.77 | 5.70 ^{+0.25} ₀ |
| 37 | 69.32 | 63.50 | 55.42 | 57.44 | 2.77 | 5.70 ^{+0.25} ₀ |

| mat'l. code | | | | tolerances unless otherwise specified | | | CUSTOMER COPY | | FCI | |
|-------------|----------------|-----|------------|---------------------------------------|------------------------|------------|---------------------|--|-----------------------------------|--|
| ltr | ecn no | dr | date | linear | .X ± 0.38 | projection | www.fciconnect.com | | title | |
| A | T09-1033 | J.H | 3/12/09 | | .XX ± 0.25 | | D-SUB MALE STRAIGHT | | product family D-SUB code TWN | |
| B | T09-1044 | J.H | 4/2/09 | angles | .XXX ± 0.10 | | | | | |
| C | ELX-H-011675 | P.K | 18/05/12 | | 0° ± 2° | | MM | | size dwg no 10090096 sheet 1 of 2 | |
| D | ELX-I-15500 | A.B | 2013/08/21 | dr | JASON HSU 3/12/09 | | | | | |
| E | ELX-I-16775 | A.B | 2014/01/21 | enr | ALIAS BABU 2014/01/21 | scale | A4 | | | |
| | | | | chr | MITHUN PAUL 2014/01/21 | 1:1 | | | | |
| | | | | appd | BIJU.K.PAUL 2014/01/21 | | | | | |
| sheet index | revision sheet | E 1 | E 2 | | | | | | | |



REMARK:

1.CHARACTERISTICS:

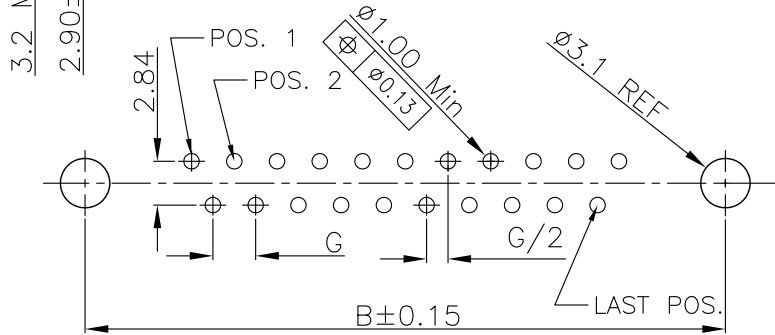
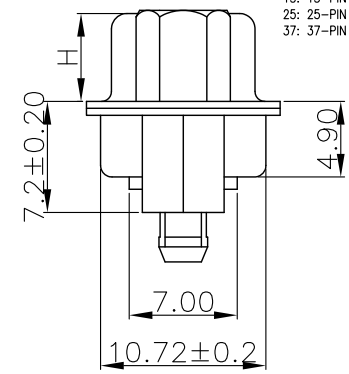
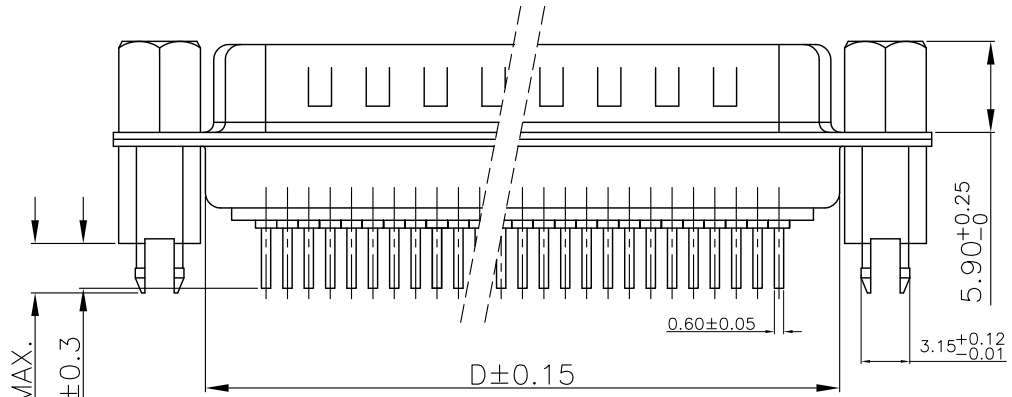
RATED VOLTAGE: 250V
 RATED CURRENT: 5AMP
 CONTACT RESISTANCE: 25mohms MAX.INITIAL;40mohms MAX.AFTER.
 INSULATION RESISTANCE: 5000Mohms MIN.at 500V DC
 DIELECTRIC STRENGTH: 1000VRMS
 OPERATING TEMPERATURE RANGE: -55°C~105°C
 INSERTION/EXTRACTION FORCE PER CONTACT:5N Max./0.3N Min.
 MATING/UNMATING CYCLES:50MATINGS MIN.

2.MATERIAL:

INSULATORS: GLASS-FILLED THERMOPLASTIC UL94V-0, COLOR IN BLACK
 CONTACTS: COPPER ALLOY,SELECTIVE GOLD ON CONTACT AREA,
 100u" Min MATTE TIN TOP OVER SOLDER AREA,
 30u" Min NICKEL UNDER PLATE.
 SHELL: STEEL,100u" Min NICKEL TOP OVER,
 50u" Min COPPER UNDER PLATE.
 CLINCH NUT: COPPER ALLOY,100u" Min MATTE TIN PLATED.
 SCREW LOCK: COPPER ALLOY, 100u" Min BRIGHT NICKEL PLATED.

3. PART NUMBER DESCRIPTION:

10090096-P XX 4 V LF
 SERIES NO. _____
 TYPE _____
 P: PIN (MALE)
 NUMBER OF CONTACTS _____
 09: 9-PIN
 15: 15-PIN
 25: 25-PIN
 37: 37-PIN
 LF: ROHS COMPLIANT
 FLANGE MOUNTING OPTION
 V: UNC #4-40 SCREWLOCKS
 CONTACT FINISH
 4: FLASH GOLD



P.C.B LAYOUT
 t: 1.6±0.1mm

| POS. | PART NO. | H |
|------|------------------|-----------|
| 9 | 10090096-P094VLF | 5.90±0.15 |
| 15 | 10090096-P154VLF | 5.90±0.15 |
| 25 | 10090096-P254VLF | 5.70±0.25 |
| 37 | 10090096-P374VLF | 5.70±0.25 |

| POS. | A | B | C | D | G |
|------|-------|-------|-------|-------|------|
| 9 | 30.81 | 24.99 | 16.92 | 19.28 | 2.74 |
| 15 | 39.24 | 33.32 | 25.25 | 27.65 | 2.74 |
| 25 | 53.04 | 47.04 | 38.96 | 41.10 | 2.77 |
| 37 | 69.32 | 63.50 | 55.42 | 57.44 | 2.77 |

| | | | | | | | | | | | |
|-------------|----------------|----|------|---------------------------------------|-------------|------------|---------------|---------------------|---------------------------|--|--------|
| mat'l. code | | | | tolerances unless otherwise specified | | | CUSTOMER COPY | | FCI www.fciconnect.com | | |
| ltr | ecn no | dr | date | linear | .X ± 0.38 | | projection | title | | | |
| E | | | | | .XX ± 0.25 | | | D-SUB MALE STRAIGHT | | | |
| | | | | | .XXX ± 0.10 | | | | | | |
| | | | | angles | 0° ±2° | | MM | | product family D-SUB | | code |
| | | | | dr | JASON HSU | 6/30/08 | scale | | size dwg no | | TWN |
| | | | | engr | ALIAS BABU | 2014/01/21 | 1:1 | | 10090096 | | sheet |
| | | | | chr | MITHUN PAUL | 2014/01/21 | | | | | 2 of 2 |
| | | | | appd | BIJU.K.PAUL | 2014/01/21 | | | | | |
| sheet index | revision sheet | | | | | | | | | | |