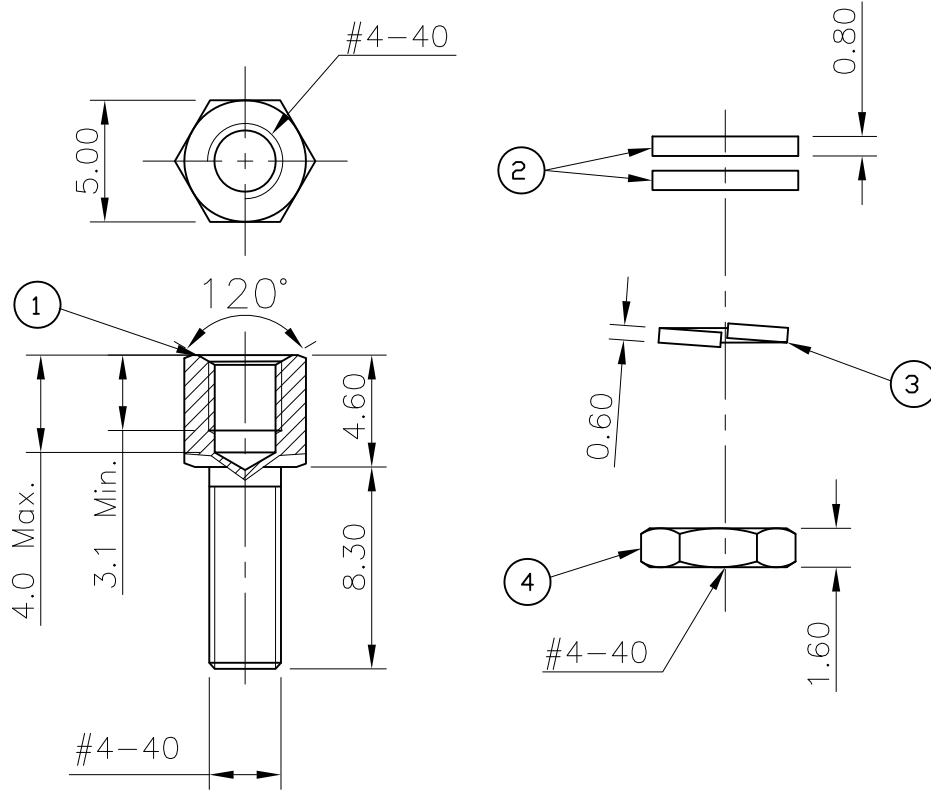


This document is the property of Amphenol Corporation and is delivered on the express condition that it is not to be disclosed, reproduced or used, in whole or in part, for manufacture or sale by anyone other than Amphenol Corporation without its prior consent, & that no right is granted to disclose or to use any information in this document.



1 locking contains the parts as below

- ① 1 SCREW
- ② 2 WASHERS
- ③ 1 LOCK WASHER
- ④ 1 NUT



Customer Drawing

REVISIONS				
SYM	ECN	DESCRIPTION	DATE	APPROVED
1	HK--	First Release Drawing	04/25/08	IP
2	HK--	Update the Drawing	05/19/15	IP

D-SUB TECHNICAL DATA

MATERIAL:

Screwlock: Steel,100u" min tin over 50u" min nickel.
 Washer: Steel,100u" min tin over 50u" min nickel.
 Lock washer: XC 35,100u" min tin over 50u" min nickel.
 Nut: Steel,100u" min tin over 50u" min nickel.

PACKAGE:

Delivered separately
 1 P/N = 10 lockings
 2 lockings are necessary for one connector.

MARKING:

Amphenol...(Series No.)
 Manufacturing date

UNLESS OTHERWISE SPECIFIED		APPROVAL		DATE	Amphenol Amphenol East Asia Limited
TOLERANCES		DRAWN	FILED	05/19/15	
U.S.		TONG TUNG		05/19/15	
METRIC		CHECKED			
.X	+/-				TITLE Accessory, screwlock with nut and washers
.XX	+/-				
.XXX	+/-				SIZE DRAWING NO. A4 L17D204182TX
FRACTIONS	+/-				
ANGLES	+/-				REV. 2
FOR MATERIALS AND FINISHES SEE NOTES		DRAWING FILE :			SCALE NONE
REMOVE SHARP EDGES		ANGLE OF PROJECTION			SHEET 1 OF 1
DIMENSIONS		FIRST ANGLE			
U.S. INCHES		THIRD ANGLE			
METRIC MM					