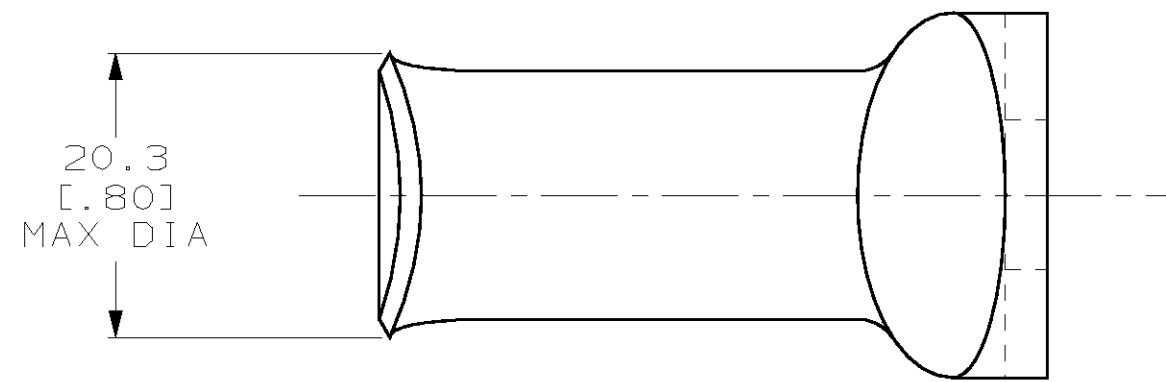
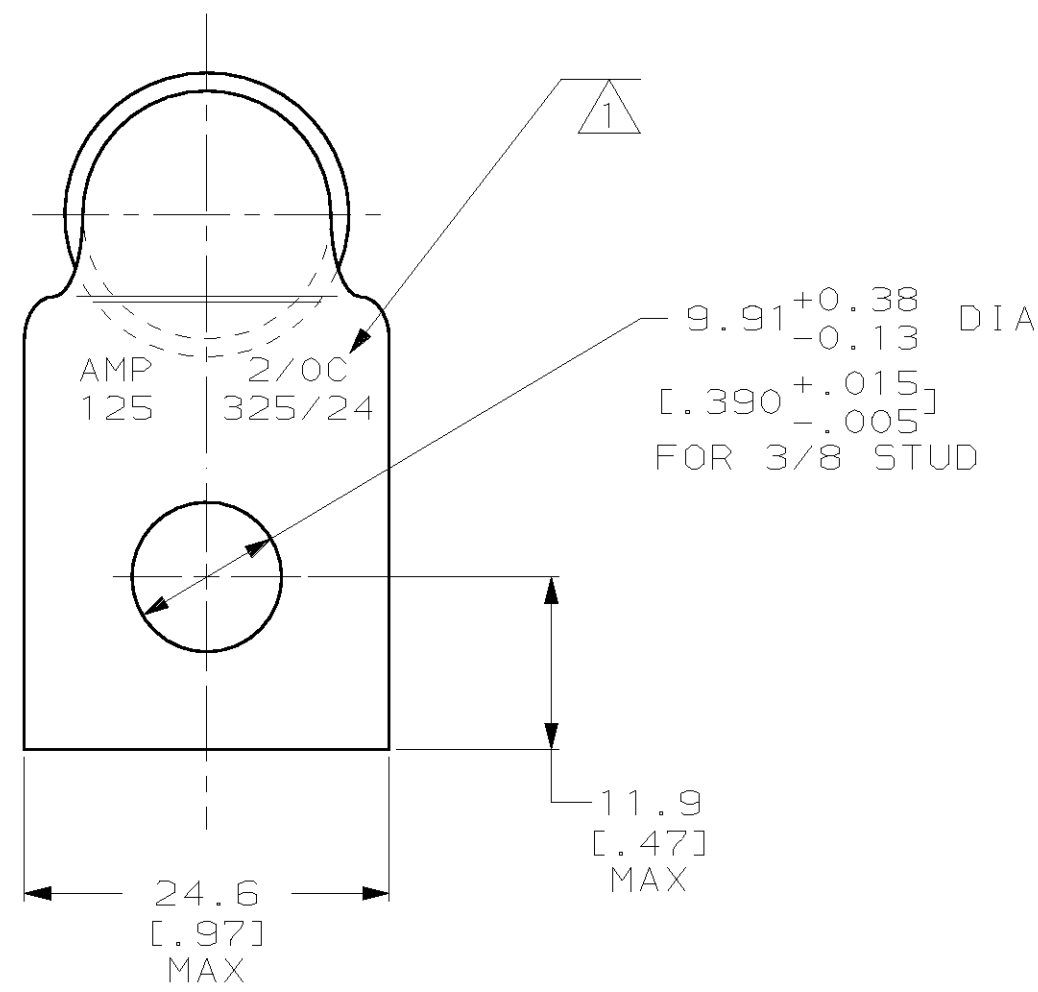
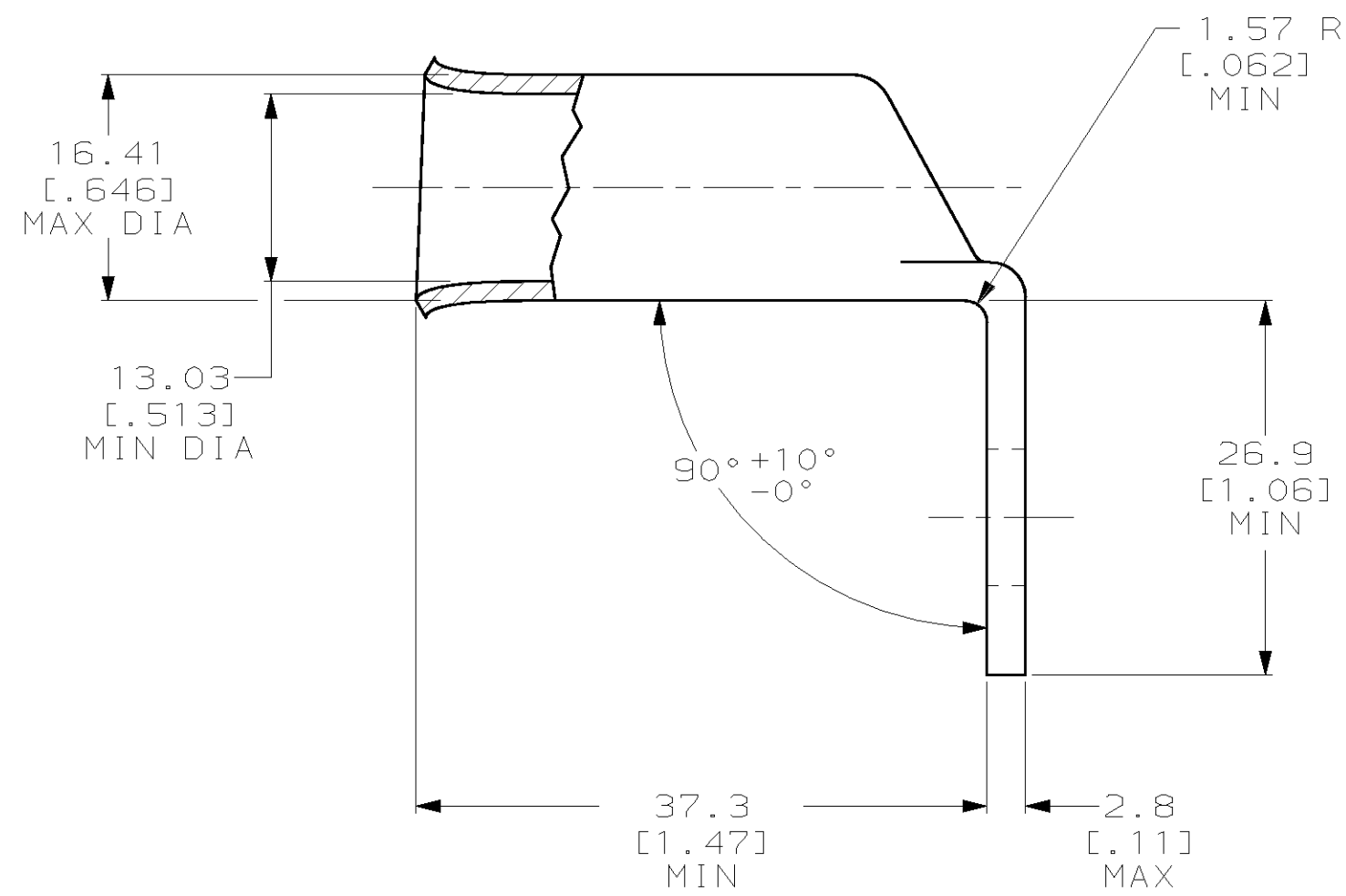


THIS DRAWING IS UNPUBLISHED. RELEASED FOR PUBLICATION  
 (C) COPYRIGHT 19 BY AMP INCORPORATED. ALL RIGHTS RESERVED.

LOC	DIST	REVISIONS					
		P	LTR	DESCRIPTION	DATE	DWN	APVD
G	86	D		REV PER 063A-0561-01	070CT02	JR	MS



△ STAMP AMP 2/0C 125 325/24 APPROX AS SHOWN



184259

184259-1  
PART NUMBER

**AMP INCORPORATED  
CUSTOMER SERVICE SYSTEMS**

RECOMMENDED OPERATING TEMPERATURE:  
170° MAX

FOR ADDITIONAL PRODUCT INFORMATION OR COPIES OF DRAWINGS AND TECHNICAL DOCUMENTS

PRODUCT INFORMATION CENTER  
1-800-522-6752

VOLTAGE RATING:  
NOT APPLICABLE

FOR APPLICATION TOOLING INFORMATION

TOOLING ASSISTANCE CENTER  
1-800-722-1111

WIRE CROSS SECTIONAL AREA RANGE:  
60.6-76.3mm<sup>2</sup> [119,500-150,500] CIR MILS  
SOLID OR STRANDED

FOR ORDER ENTRY

1-800-526-5142

THIS DRAWING IS A CONTROLLED DOCUMENT FOR AMP INCORPORATED. IT IS SUBJECT TO CHANGE AND THE CONTROLLING ENGINEERING ORGANIZATION SHOULD BE CONTACTED FOR THE LATEST REVISION.		DWN DK SCHRUM 20DEC95	<b>AMP</b> AMP Incorporated Harrisburg, PA 17105-3608
DIMENSIONS: mm [INCHES]		CHK WJ VOCKROTH 02JAN96	
TOLERANCES UNLESS OTHERWISE SPECIFIED: 0 PLC ± 1 PLC ± 2 PLC ± 3 PLC ± 4 PLC ± ANGLES ±		APVD JL MECKLEY 02JAN96	NAME JL MECKLEY
MATERIAL COPPER PER ASTM B-75 ANNEALED		FINISH TIN PLATE 0.00381 [0.00150] MIN THK PER ASTM B545	PRODUCT SPEC 108-30200
		WEIGHT .072 lbs	APPLICATION SPEC -
		CUSTOMER DRAWING	SIZE A2
			CAGE CODE 00779
			DRAWING NO C-184259
			SCALE 2:1
			SHEET 1 OF 1
			REV D