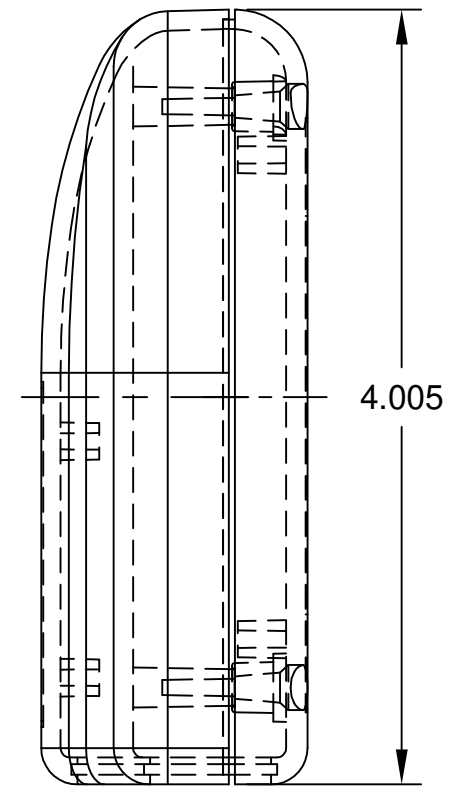
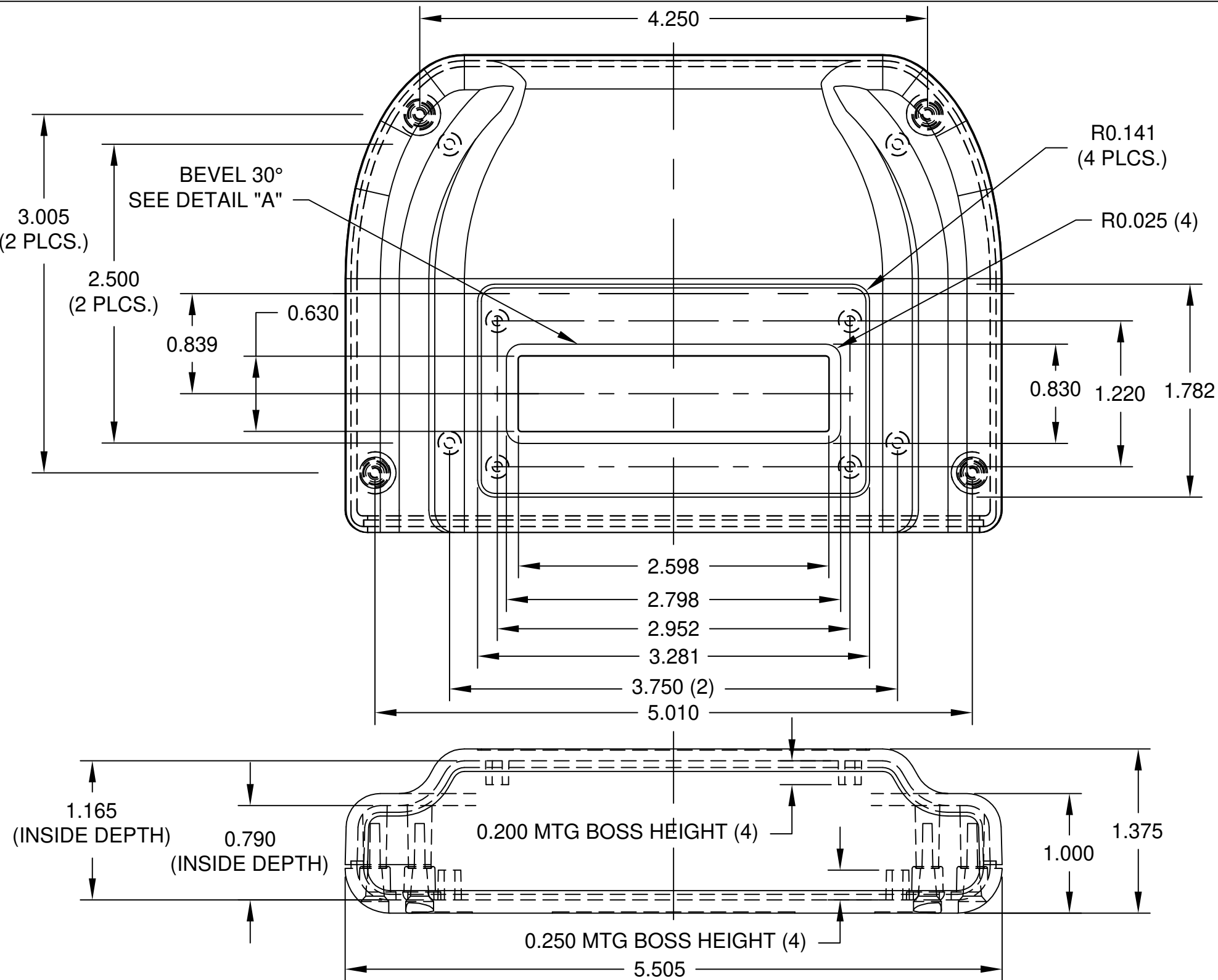
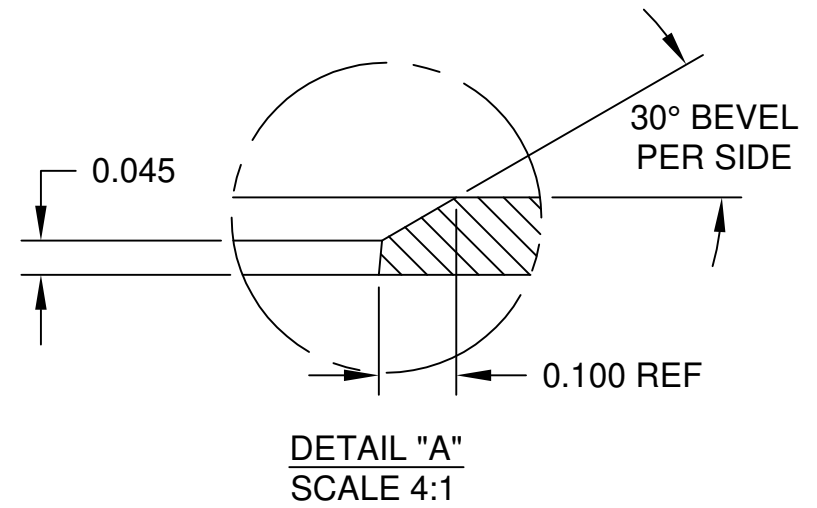



|          |             |
|----------|-------------|
| DWG. NO. | PT-11754-DW |
| ISSUE    | REVISIONS   |



- NOTES:
- 1) PC BOARD BOSSES WILL ACCEPT A #4 X 1/4" THREAD FORMING SCREW
  - 2) MATERIAL: ABS - UL94-5VA
  - 3) FINISH: BLACK TEXTURE
  - 4) DIMENSIONS ARE TO THEORETICAL SHARP CORNERS.
  - 5) INCLUDES (4) #4-24 x 5/8 HI-LOW THREAD FORMING, CSK, OVAL HEAD, PHILLIPS DRIVE SCREWS FOR ATTACHING BODY TO COVER (MAX TORQUE 4.5 IN-LBS)



| ITEM   | REQ'D.  | PART NO.  | DESCRIPTION                                       |
|--|---------|---|---|
| <b>TOLERANCES:</b><br>±.005 BETWEEN HOLE CENTERS<br>±.015 FROM SHEARED EDGE<br>±.032 FROM A BENT SURFACE<br>±.063 BETWEEN ASSEMBLED SURFACES<br>UNLESS OTHERWISE SPECIFIED |         |   | NAME:<br>PLASTIBOX STYLE I<br>WITH DISPLAY WINDOW |
| MAT: AS NOTED<br>FINISH: SEE SPEC.<br>DR. DP 5-23-05   |         | <br>BUD INDUSTRIES, INC.<br>WILLOUGHBY, OHIO | DWG. NO. PT-11754-DW                              |
| QTY.   | USED ON |   |   |