

SPECIFICATIONS

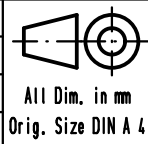
| | |
|-----------------------|-------------------|
| Performance level | PL2 |
| Filter type | C |
| Capacitance | 1000 pF \pm 20% |
| Working voltage | 100 V |
| Current rating | 7,5 A |
| Insulation resistance | >1 G Ω |

| FREQUENCY (MHz) | ATTENUATION (dB) |
|-----------------|------------------|
| 5 | 1 |
| 10 | 3 |
| 50 | 12 |
| 100 | 20 |
| 500 | 34 |
| 1000 | 30 |

PCB layout, component side, thickness 1,6 mm

| | |
|----------------|-------------|
| 09 64 324 7233 | M3 |
| 09 64 324 7232 | 4-40 UNC-2B |
| Part number | Nut thread |

| | | | Dot. | Name |
|---------|----------|------|-------------------------------|-------------|
| | | | Detail. | 08/07/02 CV |
| 36283 | 12/01/12 | SD | Insp. | 12/01/12 JB |
| EC01003 | 25/11/09 | PK | Stand. | |
| 33790 | 01/08/06 | PK | | |
| 31058 | 08/07/02 | CV | | |
| Mod. | Dot. | Name | HARTING EURL F-95972 Paris | |



D-Sub, male, angled, 25 poles, turned solder pins, clinch nuts and brackets with board locks

TB 09 64 324 723X
Sub.

Maßstab/
Scale
1,5:1
Blatt/
Page
1/4