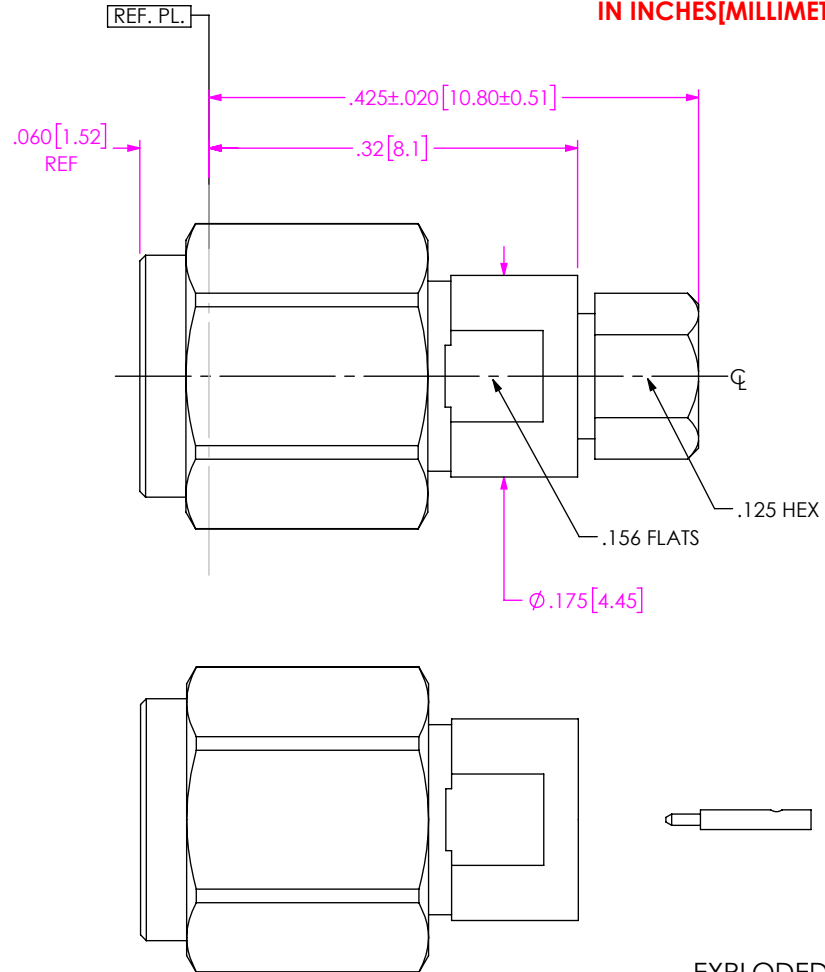


DO NOT SCALE FROM THIS PRINT

DESIGNED & DIMENSIONED IN INCHES[MILLIMETERS]



PRF10-P-C-VP-047D-SS-X

SERIES
-10: 1.0 MM

GENDER
-P: PLUG

TYPE
-C: CABLE

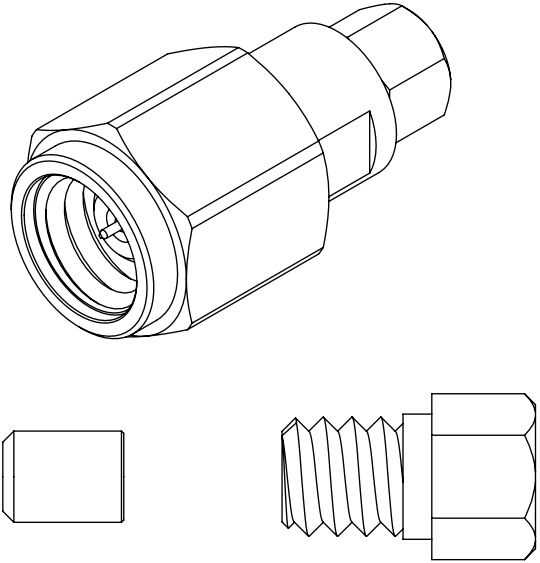
PLATING
-VP: 50µ"-75µ" PRECISION GOLD CENTER CONTACT, PASSIVATED OUTER CONTACT

PACKAGING
-B: BULK (IN INCREMENTS OF 50) (BLANK): STANDARD PACKAGING

TERMINATION
-S: SOLDER CLAMP

ORIENTATION
-S: STRAIGHT


CABLE TYPE
-047D: .047" SEMI-RIGID CABLE



EXPLODED VIEW
NOT TO SCALE
(FOR CLARITY ONLY)

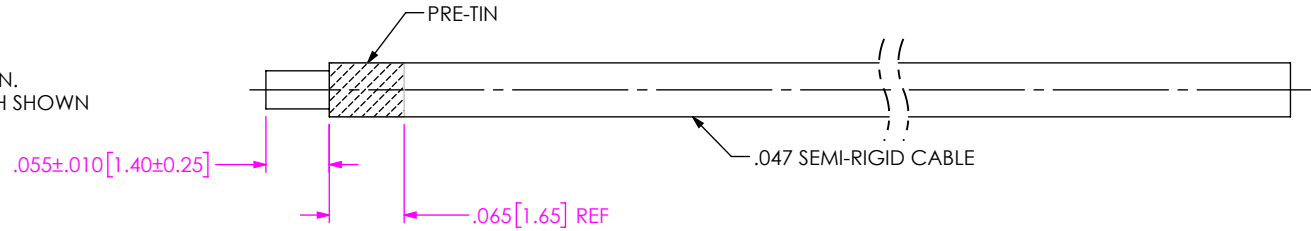
- NOTES:
- MATERIALS:**
BODY, CLAMP NUT, COUPLING NUT: STAINLESS STEEL
CONTACT, SNAP RING: BERYLLIUM COPPER
SOLDER FERRULE: BRASS ALLOY
GASKET: SILICONE RUBBER
 - FINISH:**
BODY, CLAMP NUT, COUPLING NUT: PASSIVATED
CONTACT: 50µ"-75µ" GOLD OVER 50µ"-75µ" NICKEL PLATE
SOLDER FERRULE: 50µ" GOLD OVER 50µ" NICKEL PLATE
 - PERFORMANCE:**
IMPEDANCE: 50 Ω
FREQUENCY: DC TO 110 GHz
VSWR: 1.16:1 MAXIMUM
INSERTION LOSS: 0.03 x √f[GHz]
DWV: 600 Vrms
 - PCI P/N: 3632
 - BULK PACKAGING OPTION (-B) FOR ORDERS IN INCREMENTS OF 50 PCS.

F:\DWG\MISC\MKTG\PRF10-P-C-VP-047D-SS-X-MKT.SLDDRW

UNLESS OTHERWISE SPECIFIED, DIMENSIONS ARE IN INCHES. TOLERANCES ARE: DECIMALS ANGLES .XX: ±.01 [0.3] 1° .XXX: ±.005 [0.13] .XXXX: ±.0005 [0.013]	* PROPRIETARY NOTE * THIS DOCUMENT CONTAINS CONFIDENTIAL AND PROPRIETARY INFORMATION AND ALL DESIGN, MANUFACTURING, REPRODUCTION, USE, PATENT RIGHTS AND SALES RIGHTS ARE EXPRESSLY RESERVED BY SAMTEC, INC. THIS DOCUMENT SHALL NOT BE DISCLOSED, IN WHOLE OR PART, TO ANY UNAUTHORIZED PERSON OR ENTITY NOR REPRODUCED, TRANSFERRED OR INCORPORATED IN ANY OTHER PROJECT IN ANY MANNER WITHOUT THE EXPRESS WRITTEN CONSENT OF SAMTEC, INC.	 520 PARK EAST BLVD, NEW ALBANY, IN 47150 PHONE: 812-944-6733 FAX: 812-948-5047 e-Mail: info@SAMTEC.com code 55322	
		DO NOT SCALE DRAWING SHEET SCALE: 6:1	DESCRIPTION: 1.0MM PLUG, SOLDER CLAMP FOR .047" SEMI-RIGID CABLE
		DWG. NO. PRF10-P-C-VP-047D-SS-X BY: HENSON T 04/04/2019 SHEET 1 OF 2	

CABLE APPLICATION VIEWS

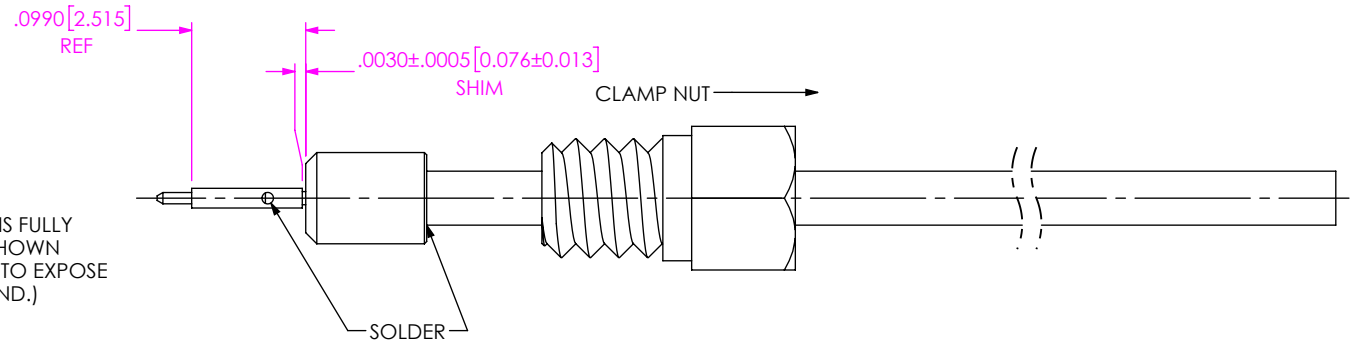
1. TRIM CABLE TO EXPOSE CENTER DIELECTRIC AS SHOWN.
2. PRE-TIN CABLE OUTER JACKET OVER APPROX. LENGTH SHOWN



IN-PROCESS VIEW 1

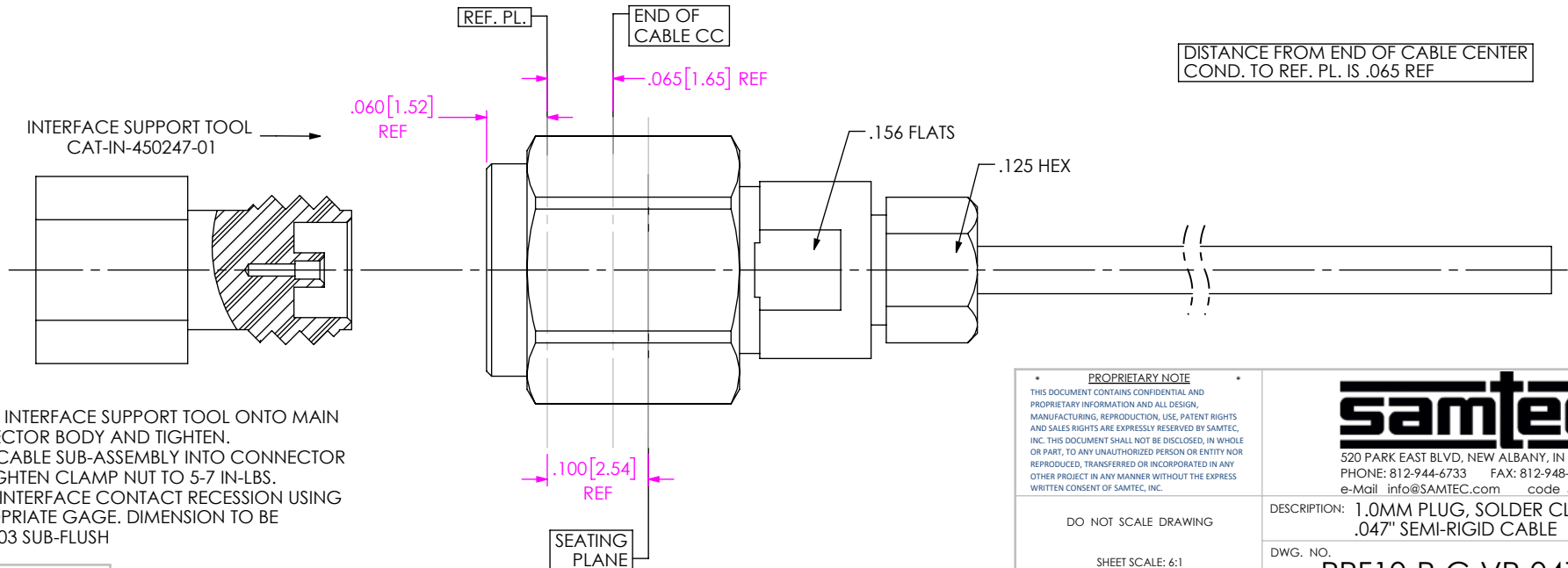
SLIGHT PRESS FIT BETWEEN CABLE DIELECTRIC AND SOLDER FERRULE.

- 2A: SLIDE CLAMP NUT ONTO CABLE AS SHOWN.
- 2B: INSTALL CABLE INTO SOLDER FERRULE UNTIL CABLE IS FULLY SEATED. THEN SOLDER CABLE TO FERRULE WHERE SHOWN
- 2C: TRIM DIELECTRIC CORE FLUSH TO SOLDER FERRULE TO EXPOSE CONDUCTOR (NOTE: DO NOT SCORE CENTER COND.)
- 2D: SOLDER CONTACT WITH GAP SHOWN USING SHIM.



IN-PROCESS VIEW 2

DISTANCE FROM END OF CABLE CENTER COND. TO REF. PL. IS .065 REF



- 3A: SCREW INTERFACE SUPPORT TOOL ONTO MAIN CONNECTOR BODY AND TIGHTEN.
- 3B: INSERT CABLE SUB-ASSEMBLY INTO CONNECTOR AND TIGHTEN CLAMP NUT TO 5-7 IN-LBS.
- 3C: GAGE INTERFACE CONTACT RECESSON USING APPROPRIATE GAGE. DIMENSION TO BE .000/.003 SUB-FLUSH

IN-PROCESS VIEW 3

PROPRIETARY NOTE
 THIS DOCUMENT CONTAINS CONFIDENTIAL AND PROPRIETARY INFORMATION AND ALL DESIGN, MANUFACTURING, REPRODUCTION, USE, PATENT RIGHTS AND SALES RIGHTS ARE EXPRESSLY RESERVED BY SAMTEC, INC. THIS DOCUMENT SHALL NOT BE DISCLOSED, IN WHOLE OR PART, TO ANY UNAUTHORIZED PERSON OR ENTITY NOR REPRODUCED, TRANSFERRED OR INCORPORATED IN ANY OTHER PROJECT IN ANY MANNER WITHOUT THE EXPRESS WRITTEN CONSENT OF SAMTEC, INC.

DO NOT SCALE DRAWING

SHEET SCALE: 6:1



520 PARK EAST BLVD, NEW ALBANY, IN 47150
 PHONE: 812-944-6733 FAX: 812-948-5047
 e-Mail info@SAMTEC.com code 55322

DESCRIPTION: 1.0MM PLUG, SOLDER CLAMP FOR .047" SEMI-RIGID CABLE

DWG. NO. PRF10-P-C-VP-047D-SS-X

BY: HENSON T 04/04/2019 SHEET 2 OF 2