

## MS-390-4



## MS-390-4

Snap-fit Form C Reed Sensor

### Electrical Characteristics @ 25 °C

Contact form		C
Contact rating max.	W / VA	5
Switching voltage max.	VDC	175
	VAC	120
Switching current max.	A	0.25
Carry current max.	A	1.5
Breakdown voltage min.	VDC	200
Total resistance max. (initial)	mΩ	200
Insulation resistance min.	Ω	10 <sup>9</sup>

### Features

- Easily mountable and removable as no tools or screws required
- Various sensitivity ranges available
- Customized types available

### Magnetical Characteristics (of unmodified Reed Switch) @ 25 °C

Pull in range available	AT	15 - 30
Drop out min.	AT	5
Test coil	TC	200
Test equipment tolerance	± AT	2

### Approvals



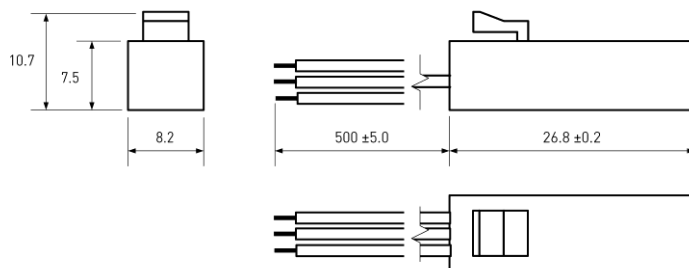
### Operating Characteristics (of unmodified Reed Switch) @ 25 °C

Switching frequency max.	Hz	100
Resonant frequency typ.	Hz	1100
Operate time max. (incl. bounce)	ms	0.7
Release time max.	ms	1

### Environmental Characteristics

Operating temperature	°C	-20 to +85
Vibration (50-2000 Hz)	g	30
Shock (1/2 sin 11 ms)	g	50

### Dimensions in mm



### Ordering Information

Packing Unit	25 pcs
Weight per piece	6.2 g
Weight per package	170 g
Standard AT Ranges	
	2 = 15 to 20 AT
	3 = 20 to 25 AT
	4 = 25 to 30 AT

### Ordering Example

MS-390-4-2-0500 describes  
MS-390-4 with 15 to 20 AT.

MS-390-4



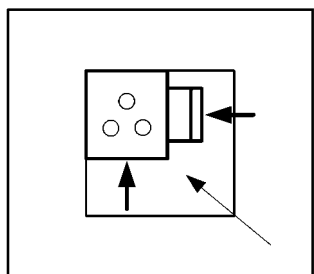
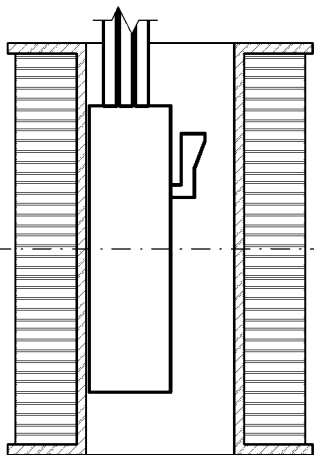
**MS-390-4**

Snap-fit Form C Reed Sensor

Material Information

	Material	Colour
Housing	PC	black
Cable	UL 1061, AWG 24, 4 mm stripped and tinned	COM: black, NO: grey, NC: white
Potting compound	Epoxy	black

Test Procedure of final Reed Sensor



Test Coil placed in vertical position

Reed Sensor centered in Test Coil

Reed Sensor pushed into opposite corner of Test Coil

Test Parameters

Test coil	TC-324
Test programs	
AT range	Test program
2 =	MS-390-4-2
3 =	MS-390-4-3
4 =	MS-390-4-4

Remarks

When mounted onto ferromagnetic parts switching distance of MS-390-4 may reduce.  
Electromagnetical influences and magnetic fields may change the switching behaviour of the sensor.

Matching actuator MSM-390 available as well.