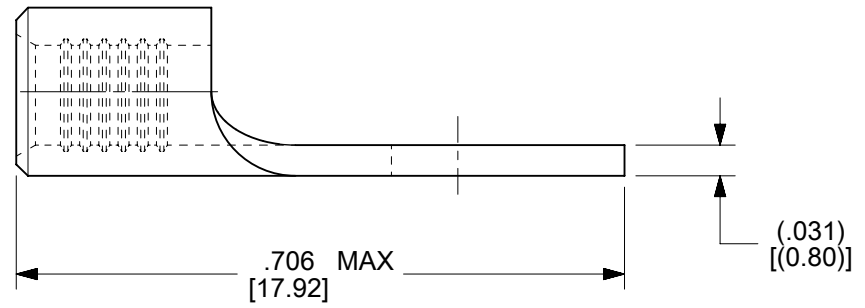
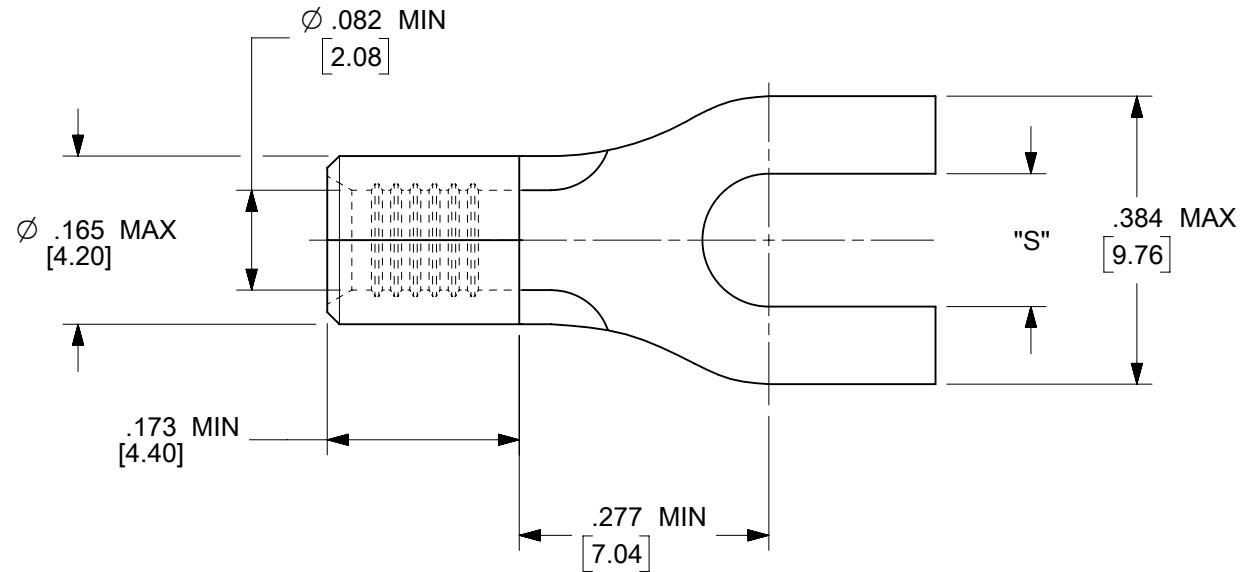


10	9	8	7	6	5	4	3	2	1
MATERIAL NO.	ENG. NO.	STUD SIZE	"S" MAX	DESCRIPTION					
192030381	19203-0381	10	.215/5.46	LOOSE					

(D1)



NOTES:

1. MATERIAL: STEEL
2. FINISH: NICKEL PLATED WITH OPTIONAL COPPER FLASH UNDERPLATING, IS ALLOWED FOR IMPROVED ADHESION.
3. WIRE SIZE: 16-14 AWG (1.5-2.5 MM²)
4. PART IS ROHS COMPLIANT.
5. AMBIENT OPERATING TEMPERATURE UP TO 900 °F (483 °C).

(D1)

THIS DRAWING CONTAINS INFORMATION THAT IS PROPRIETARY TO MOLEX ELECTRONIC TECHNOLOGIES, LLC AND SHOULD NOT BE USED WITHOUT WRITTEN PERMISSION									
FUNCTIONAL SYMBOLS	DIMENSION UNITS	SCALE	CURRENT REV DESC: REMASTERED IN ECTR, UPDATED NOTE AND REMOVED TAPE DETAIL						
	$\nabla_A = 0$	IN/MM	1:1	<p>EC NO: 708789 DRWN: PAWANC 2022/05/12 CHKD: DMYRICK 2022/06/01 APPR: JMACNEIL 2022/06/02</p> <p>INITIAL REVISION: DRWN: DMYRICK 2005/04/07 APPR: RDEROSS 2005/04/07</p>					
GENERAL TOLERANCES (UNLESS SPECIFIED)									
$\nabla_C = 0$									
DIVISIONAL SYMBOLS	4 PLACES	±	±	<p>PRODUCT CUSTOMER DRAWING</p> <p>DOCUMENT NUMBER: SD-19203-021 DOC TYPE: PSD DOC PART: 001 REVISION: D1</p>					
	3 PLACES	±	±						
	2 PLACES	±	±						
	1 PLACE	±	±						
0 PLACES	±	±	±	<p>MATERIAL NUMBER: SEE CHART CUSTOMER: GENERAL MARKET SHEET NUMBER: 1 OF 1</p>					
ANGULAR TOL	±	°							
DRAFT WHERE APPLICABLE MUST REMAIN WITHIN DIMENSIONS		THIRD ANGLE PROJECTION	DRAWING	SERIES	MATERIAL NUMBER		CUSTOMER		SHEET NUMBER
			B-SIZE	19203	SEE CHART	GENERAL MARKET		1 OF 1	

DOCUMENT STATUS	P1	RELEASE DATE	2022/06/02	15:20:36
-----------------	----	--------------	------------	----------