

Base strip - IPCV 16/ 4-GF-10,16 - 1969797

Please be informed that the data shown in this PDF Document is generated from our Online Catalog. Please find the complete data in the user's documentation. Our General Terms of Use for Downloads are valid (<http://phoenixcontact.com/download>)



Header, Nominal current: 76 A, Rated voltage (III/2): 1000 V, Number of positions: 4, Pitch: 10.16 mm, Color: green, Contact surface: Silver, Assembly: Soldering

The figure shows a 5-pos. version of the product

Product Features

- Integrated double steel spring
- CS-IPC 16/6 for anti-rotation protection during assembly
- Inverted vertical IPC 16 headers for implementing a touch-proof PCB output or a PCB/PCB connection (in combination with PC 6-16 base strips)



Key commercial data

Packing unit	1 pc
Minimum order quantity	50 pc
GTIN	 4 017918 946807
Weight per Piece (excluding packing)	19.45 GRM
Custom tariff number	85366990
Country of origin	Poland

Technical data

Dimensions

Length	13.6 mm
Pitch	10.16 mm
Dimension a	30.48 mm
Pin dimensions	0,8 x 1,2
Pin spacing	10.16 mm
Hole diameter	1.7 mm

Base strip - IPCV 16/ 4-GF-10,16 - 1969797

Technical data

General

Range of articles	IPCV 16/..-GF
Insulating material group	I
Rated surge voltage (III/3)	8 kV
Rated surge voltage (III/2)	8 kV
Rated surge voltage (II/2)	8 kV
Rated voltage (III/3)	1000 V
Rated voltage (III/2)	1000 V
Rated voltage (II/2)	1000 V
Nominal current I _N	76 A
Maximum load current	76 A
Insulating material	PA
Inflammability class according to UL 94	V0
Color	green
Number of positions	4

Classifications

eCl@ss

eCl@ss 4.0	272607xx
eCl@ss 4.1	27260701
eCl@ss 5.0	27260701
eCl@ss 5.1	27260701
eCl@ss 6.0	27260704
eCl@ss 7.0	27440402
eCl@ss 8.0	27440402

ETIM

ETIM 3.0	EC001121
ETIM 4.0	EC002637
ETIM 5.0	EC002637

UNSPSC

UNSPSC 6.01	30211810
UNSPSC 7.0901	39121409
UNSPSC 11	39121409
UNSPSC 12.01	39121409
UNSPSC 13.2	39121409

Base strip - IPCV 16/ 4-GF-10,16 - 1969797

Approvals

Approvals


Approvals

UL Recognized / SEV / cUL Recognized / CCA / GOST / GOST / cULus Recognized


Ex Approvals

Approvals submitted

Approval details

UL Recognized 			
	B	C	D
Nominal current IN	66 A	66 A	5 A
Nominal voltage UN	300 V	300 V	600 V

SEV	
Nominal current IN	76 A
Nominal voltage UN	1000 V

cUL Recognized 			
	B	C	D
Nominal current IN	66 A	66 A	5 A
Nominal voltage UN	300 V	300 V	600 V

CCA	
Nominal current IN	76 A
Nominal voltage UN	1000 V

Base strip - IPCV 16/ 4-GF-10,16 - 1969797

Approvals

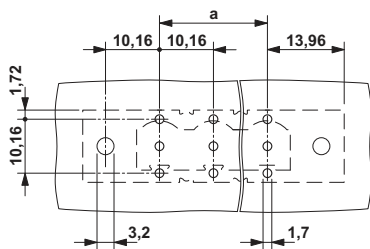
GOST

GOST

cULus Recognized

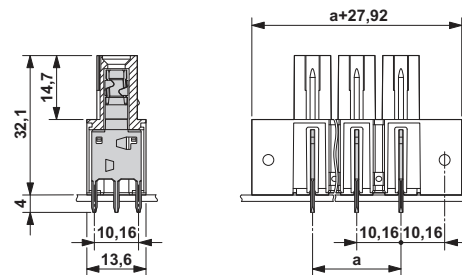
Drawings

Drilling diagram



The illustration shows the 3-pos. version

Dimensioned drawing



The illustration shows the 3-pos. version