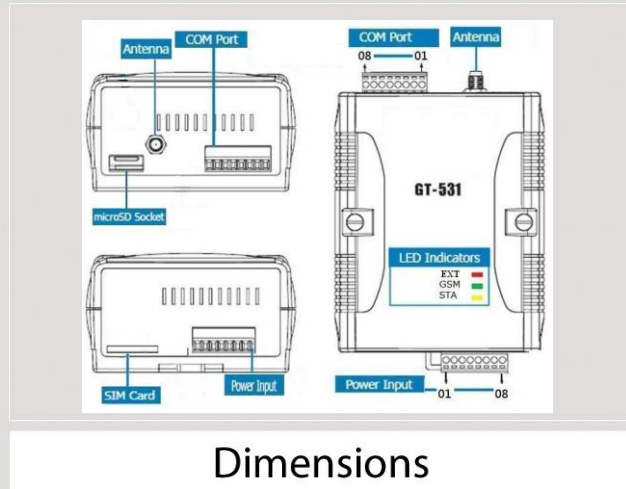




## Intelligent Modbus SMS/GSM Alarm Controller



GT-531



Dimensions

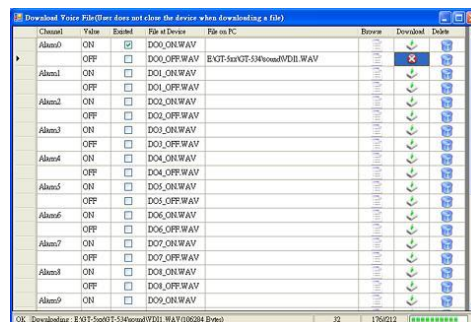
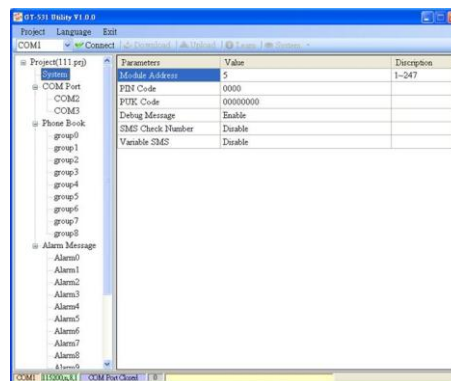
GT-531 is an intelligent Modbus SMS/GSM Gateway for industry M2M applications. It is convenient for users to apply to M2M applications with the host like PC, PLC, HMI and PAC via Modbus RTU communication. It supports UNICODE format for users to send SMS messages to the specific mobile phones by Modbus RTU protocol with various language. That can make the current system to M2M applications. Moreover, the GT-531 also supports the sound alarm application with the pre-defined voice files. It can be used to inform operator the urgent event immediately. For managing more GT-53x series remotely, ICP DAS provides SMS DBS software for users to apply in the system. Therefore, the GT-531 can be a powerful tool allowing you to use your mobile phone to monitor and control your business from any location.

## Features

- Support Quad-band 850/900/1800/1900 MHz frequency
- Support Modbus RTU slave protocol
- Support max. 256 short messages and voice alarms
- Support max. 70 Unicode Characters
- Easy to setup and configure
- Escalation and reminder function
- Up to 256 mobile phones can be alerted for each alarm point
- These phone numbers can be divided into groups
- Configurable SMS messages
- The content of sending SMS message can be changed by Modbus protocol
- Built-in Watchdog Function
- Industrial Design with Surge Protection
- Support SMS DB of ICP DAS software
- 1 RS-485, 2 RS-232 port
- Support micro SD card. (option , max. 2G bytes)
- Support DC +10 VDC ~ +30 VDC Power Input
- DIN Rail design

## Utility

ICP DAS provide graphic tool for users to configure GT-531 via RS-232. The utility also can help users to test the GT-531 in the Lab before they apply in the real site.





## Hardware Specifications

System	
CPU	32 bit Microprocessor
WDT(watchdog)	Yes
Comm. Interface	
COM1	RS-232 : TXD,RXD,GND : Configuration and Debug
COM2	RS-232 : TXD,RXD,GND : Configuration and Debug
COM3	RS-485 : D+,D- : Communicating with the Host
GSM Interface	
Compliant to GSM Phase 2/2+	Class 4 (2 W @ 850/900 MHz); Class 1 (1 W @ 1800/1900 MHz)
Coding Schemes	CS 1, CS 2, CS 3, CS 4
SMS	PDU mode
SMS Format	Sending : UCS2 Receiving : UCS2/7bits
General	
Power Requirement	2W; Unregulated +10V <sub>DC</sub> ~ +30V <sub>DC</sub>
LEDs	3 indicator LEDs
Environment	
Operation Temp.	Operation : -25°C to 75°C ; Storage Temp : -40°C to 80°C
Humidity	5~95% non-condensing
Dimensions	91mm x 132mm x 52mm (long*width* high)

LED	Description	
EXT(red)	on	The external Power is active
	off	The external Power is not active
STA (orange)	Blanking per1 sec	Module normal
	Always on or off	GSM fail
	Blinking per 50 ms	PIN code is wrong
GSM(green)	Blinking per 3sec	Modem normal
	off	Modem fail (or Blinking(not 3 sec))

## Applications



## Ordering Information

<b>GT-531 CR</b>	Intelligent Modbus SMS/GSM Alarm Controller (RoHS) (without microSD card)
------------------	---