

THIS DRAWING IS UNPUBLISHED. RELEASED FOR PUBLICATION - N/A -
 © COPYRIGHT N/A BY TYCO ELECTRONICS CORPORATION. ALL RIGHTS RESERVED.

LOC	DIST	REVISIONS					
DF	S0	P	LTR	DESCRIPTION	DATE	DWN	APVD
		U		REV PER ECO-05-002357	08-05	AA	DE

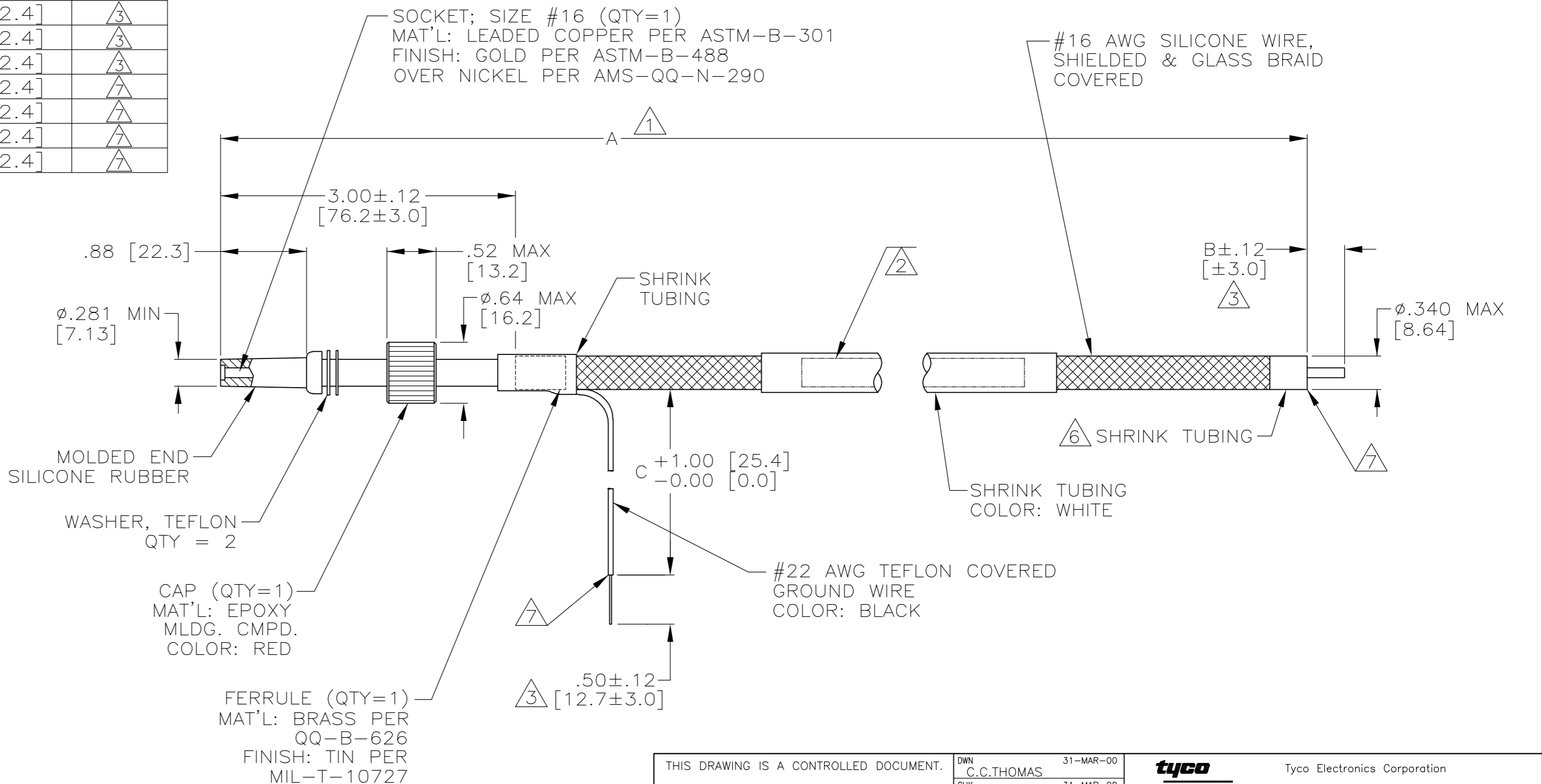
PART NO.	A	B	C	REMARKS
849099-1	22.00 [558.8]	.50 [12.7]	6.00 [152.4]	△3
849099-2	78.00 [1981.2]	.25 [6.3]	6.00 [152.4]	△3 OBSOLETE
849099-3	8.50 [215.9]	.25 [6.3]	6.00 [152.4]	△3
849099-4	36.00 [914.4]	-	6.00 [152.4]	△3
849099-5	19.00 [482.6]	.25 [6.3]	6.00 [152.4]	△3 OBSOLETE
849099-6	100.00 [2540.0]	.38 [9.7]	6.00 [152.4]	△3 OBSOLETE
849099-7	6.00 [152.4]	.38 [9.7]	6.00 [152.4]	△3 OBSOLETE
849099-8	60.00 [1524.0]	.38 [9.7]	6.00 [152.4]	△3 OBSOLETE
849099-9	24.00 [609.6]	.38 [9.7]	6.00 [152.4]	△3 OBSOLETE
1-849099-0	8.00 [203.2]	.38 [9.7]	6.00 [152.4]	△3 OBSOLETE
1-849099-1	13.00 [330.2]	.50 [12.7]	6.00 [152.4]	△3 OBSOLETE
1-849099-2	12.00 [304.8]	.38 [9.7]	6.00 [152.4]	△3 OBSOLETE
1-849099-3	9.00 [228.6]	.38 [9.7]	6.00 [152.4]	△3 OBSOLETE
1-849099-4	840.00 [21336.0]	.38 [9.7]	-	△3
1-849099-5	960.00 [24384.0]	.38 [9.7]	6.00 [152.4]	△3 OBSOLETE
1-849099-6	480.00 [12192.0]	.38 [9.7]	6.00 [152.4]	△3 OBSOLETE
1-849099-7	324.00 [8229.6]	.38 [9.7]	-	△3 OBSOLETE
1-849099-8	624.00 [15849.6]	.75 [19.0]	-	△3 OBSOLETE
1-849099-9	120.00 [3048.0]	.38 [9.7]	6.00 [152.4]	△3
2-849099-0	540.00 [13716.0]	.38 [9.7]	6.00 [152.4]	△3
2-849099-1	432.00 [10972.8]	.38 [9.7]	6.00 [152.4]	△3
2-849099-2	288.00 [7315.2]	.38 [9.7]	6.00 [152.4]	△3
2-849099-3	45.00 [1143.0]	.38 [9.7]	6.00 [152.4]	△3
6-849099-9	120.00 [3048.0]	.38 [9.7]	6.00 [152.4]	△7
7-849099-0	540.00 [13716.0]	.38 [9.7]	6.00 [152.4]	△7
7-849099-2	288.00 [7315.2]	.38 [9.7]	6.00 [152.4]	△7
7-849099-3	45.00 [1143.0]	.38 [9.7]	6.00 [152.4]	△7

- △1 TOLERANCE OF LEAD LENGTH:
UP TO 24 INCHES [609.6] = ±.12 [±3.0]
24 INCHES [609.6] & UP = ±1%
- △2 MARKED PER MIL-STD-130.
- △3 PIGTAILS ARE SOLDER DIPPED.
- 4. TO MATE WITH AMP LGH-1 RECEPTACLE WITH .88 [22.3] BARREL DEPTH.
- 5. OPERATING VOLTAGE: 20 KVDC AT 0 TO 70,000 FEET, -55°C TO 125°C.
- △6 SHRINK TUBING IS FOR HOLDING GLASS BRAID & SHIELDING TOGETHER. CUSTOMER TO STRIP & TERMINATE.
- △7 INSULATION CUT, BUT NOT REMOVED.

C

B

A



THIS DRAWING IS A CONTROLLED DOCUMENT.		DWN C.C.THOMAS 31-MAR-00	 Tyco Electronics Corporation Harrisburg, Pa 17105-3608																				
DIMENSIONS: INCHES [mm]		CHK D.EABY 31-MAR-00																					
TOLERANCES UNLESS OTHERWISE SPECIFIED:		APVD D.EABY 31-MAR-00																					
MATERIAL SEE CALLOUTS		FINISH SEE CALLOUTS																					
<table border="1"> <tr><td>0 PLC</td><td>± -</td></tr> <tr><td>1 PLC</td><td>± -</td></tr> <tr><td>2 PLC</td><td>± .02 [0.5]</td></tr> <tr><td>3 PLC</td><td>± -</td></tr> <tr><td>4 PLC</td><td>± -</td></tr> <tr><td>ANGLES</td><td>± -</td></tr> </table>		0 PLC	± -	1 PLC	± -	2 PLC	± .02 [0.5]	3 PLC	± -	4 PLC	± -	ANGLES	± -	NAME D.EABY 31-MAR-00	<table border="1"> <tr><td>SIZE</td><td>CAGE CODE</td><td>DRAWING NO</td><td>RESTRICTED TO</td></tr> <tr><td>A2</td><td>00779</td><td>C=849099</td><td>-</td></tr> </table>	SIZE	CAGE CODE	DRAWING NO	RESTRICTED TO	A2	00779	C=849099	-
0 PLC	± -																						
1 PLC	± -																						
2 PLC	± .02 [0.5]																						
3 PLC	± -																						
4 PLC	± -																						
ANGLES	± -																						
SIZE	CAGE CODE	DRAWING NO	RESTRICTED TO																				
A2	00779	C=849099	-																				
CUSTOMER DRAWING		WEIGHT -	SCALE 1:1																				
		SHEET 1 OF 1	REV U																				