

## Contact insert - VC-AMS 2-PE - 1583542

Please be informed that the data shown in this PDF Document is generated from our Online Catalog. Please find the complete data in the user's documentation. Our General Terms of Use for Downloads are valid (<http://download.phoenixcontact.com>)

Contact insert module, for panel mounting frames, with screw connection, 1-pos. + PE connection, 400 V / 20 A



### Product Features

- Compact design
- Universal connection
- Proven COMBICON technology
- Can be keyed to prevent incorrect connection



### Key commercial data

Packing unit	1 PCE
Weight per Piece (excluding packing)	16.0 GRM
Custom tariff number	85366990
Country of origin	Poland

### Technical data

#### General

Note	Connectors may only be connected/disconnected when under no load.
Connection method	Screw connection
	Screw connection
Tightening torque	0.5 Nm ... 0.6 Nm
Pollution degree	3
Surge voltage category	III
Number of positions	1+PE
Conductor cross section	0.2 mm <sup>2</sup> ... 4 mm <sup>2</sup>
Connection cross section AWG	24 ... 12
Stripping length of the individual wire	7 mm

# Contact insert - VC-AMS 2-PE - 1583542

## Technical data

### Ambient conditions

Ambient temperature (operation)	-40 °C ... 100 °C
---------------------------------	-------------------

### Material data

Inflammability class according to UL 94	V0
Contact material	CuZn
Contact surface material	Tin-plated
Contact carrier material	PA

### Electrical characteristics

Rated voltage (III/3)	400 V
Rated surge voltage	6 kV
	6 kV
Rated current	20 A

## Classifications

### eCl@ss

eCl@ss 4.0	272607xx
eCl@ss 4.1	27260701
eCl@ss 5.0	27143424
eCl@ss 5.1	27143424
eCl@ss 6.0	27279220
eCl@ss 7.0	27440103
eCl@ss 8.0	27440103

### ETIM

ETIM 3.0	EC000438
ETIM 4.0	EC000438
ETIM 5.0	EC000438

### UNSPSC

UNSPSC 6.01	30211923
UNSPSC 7.0901	39121522
UNSPSC 11	39121522
UNSPSC 12.01	39121522
UNSPSC 13.2	39121522

## Approvals

### Approvals

# Contact insert - VC-AMS 2-PE - 1583542

## Approvals

---

Approvals

GOST

---

Ex Approvals

---

Approvals submitted

## Approval details



## Accessories

Accessories

Coding element

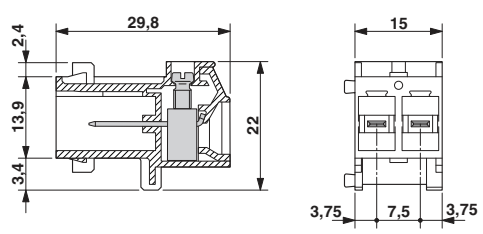
Coding profile - CP-HCC 4 - 1600027



Coding profile, Number of positions: 1, Color: red

## Drawings

Dimensioned drawing



## Contact insert - VC-AMS 2-PE - 1583542

Diagram

