

# PB300 SERIES PUSHBUTTON SWITCH

ANTI-VANDAL SWITCHES  
DETECTOR SWITCHES  
DIP SWITCHES  
KEYLOCK SWITCHES  
NAVIGATION SWITCHES  
PUSHBUTTON SWITCHES  
ROCKER SWITCHES  
ROTARY SWITCHES  
SLIDE SWITCHES  
SNAP ACTION SWITCHES  
TACTILE SWITCHES  
TOGGLE SWITCHES  
CAP OPTIONS



## APPLICATIONS / MARKETS



Audio / Visual



Electrical Housewares



Floor Care Appliances



White Goods



Instrumentation



Medical Equipment

# RoHS

## SPECIFICATIONS

**Electrical Rating:** 30mA @ 28VDC  
**Electrical Life:** 20,000 Cycles  
**Contact Resistance:** 50mΩ Max. Initial  
**Insulation Resistance:** 10GΩ Min. @ 1000VDC  
**Dielectric Strength:** 500VAC for 1 minute  
**Operating Temperature:** -40°C to 95°C  
**Storage Temperature:** -40°C to 95°C  
**Full Travel:** 2.0mm  
**Contact Arrangement:** SPST, SPDT  
**Actuation Force:** ST: 490 grams;  
 DT 1st position: 600 grams; DT 2nd position: 1150 grams

## FEATURES & BENEFITS

- SPST or SPDT/Double action
- Double action: first circuit closes mid travel, second at full travel
- Long travel - 2.0mm
- High actuation force
- Tactile response

## PART NUMBER CONFIGURATOR

Series



PB300

Circuit Function



ST - Single Pole, Single Throw, Momentary  
 DT - Single Pole, Double Throw (Double Action), Momentary

Contact Material



Q - Silver

*Specifications subject to change without notice*



E-SWITCH®

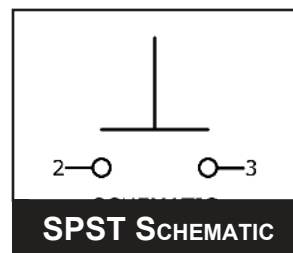
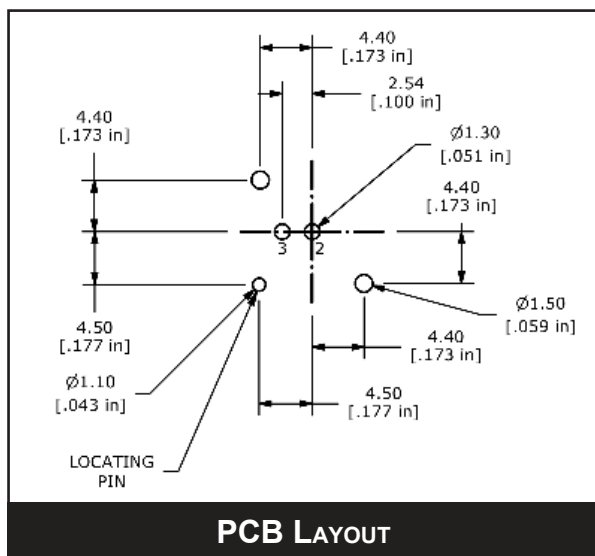
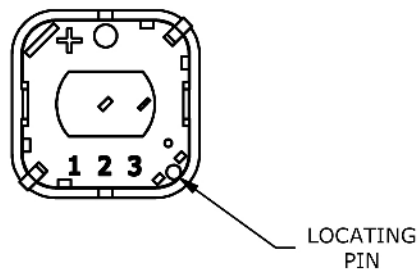
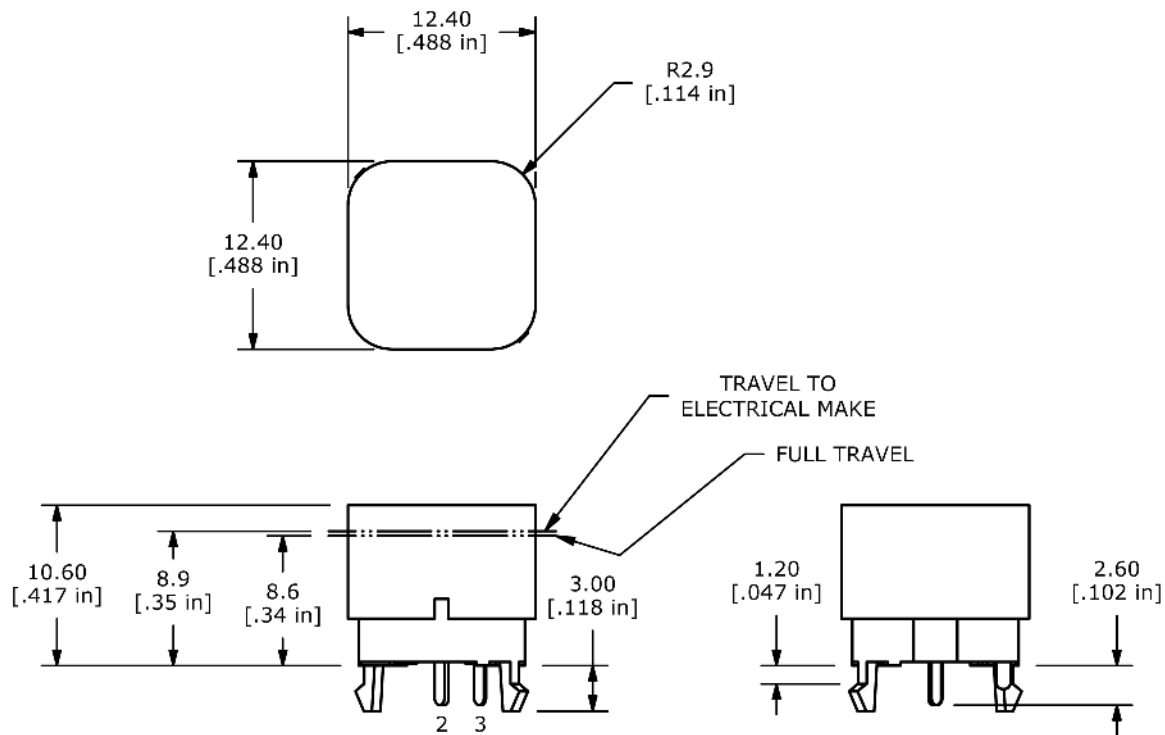
www.e-switch.com

800.867.2717

2

# PB300 SERIES PUSHBUTTON SWITCH

## SINGLE THROW



# PB300 SERIES PUSHBUTTON SWITCH

## DOUBLE THROW

- ANTI-VANDAL SWITCHES
- DETECTOR SWITCHES
- DIP SWITCHES
- KEYLOCK SWITCHES
- NAVIGATION SWITCHES
- PUSHBUTTON SWITCHES**
- ROCKER SWITCHES
- ROTARY SWITCHES
- SLIDE SWITCHES
- SNAP ACTION SWITCHES
- TACTILE SWITCHES
- TOGGLE SWITCHES
- CAP OPTIONS

