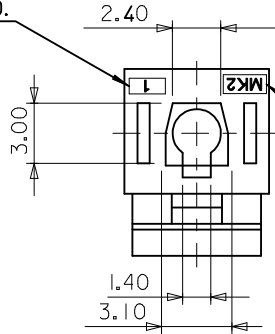
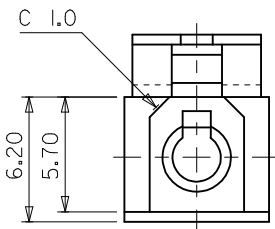
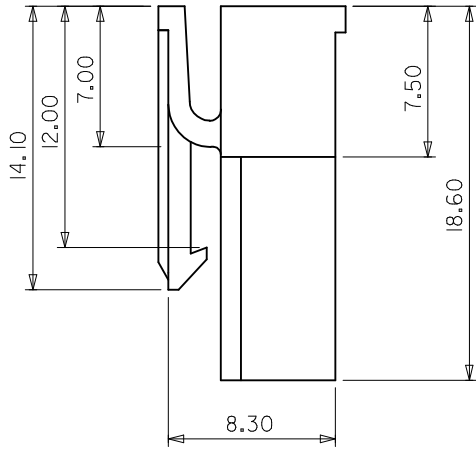
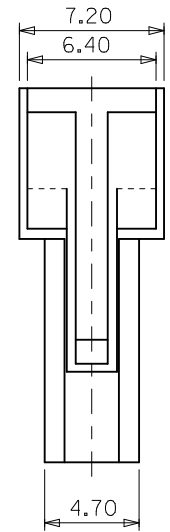


CAVITY NO.
(1,2...)



TRADE MARK
(MK2)



NOTES

① 1. MATERIAL AND COLOR : SEE TABLE.

TABLE	ENG. NO.	COLOR	MATERIAL
	35108-0192	RED	PET/PC UL94V-0
	35108-0193	YELLOW	
	35108-0194	BLUE	
35108-0196	WHITE		

- 2. PRODUCT SPECIFICATION : PS-35108-001
- 3. MATED WAFER : 35204-01**
- 4. APPLICABLE TERMINAL : 35716-0110

REVISED EC NO: KOR2016-0086 DRWNS: SCHONG03 2016/03/07 CHKD: SHCHU 2016/03/07 APPR: YSK1M02 2016/03/31	QUALITY SYMBOLS	GENERAL TOLERANCES (UNLESS SPECIFIED)		DIMENSION STYLE MM ONLY		SCALE	DESIGN UNITS METRIC	THIRD ANGLE PROJECTION		
	▼=0 ▽=0	mm INCH 4 PLACES ± --- ± --- 3 PLACES ± --- ± --- 2 PLACES ± 0.30 ± --- 1 PLACE ± 0.30 ± --- ANGULAR ± 3 °	DRAWN BY WY. YANG	DATE 1996/01/12	TITLE 2.36 DIA HOUSING-1P					
			CHECKED BY BK. CHOI	DATE 1996/01/12	MOLEX INCORPORATED DOCUMENT NO. SD-35108-001 SHEET NO. 1 OF 01					
			APPROVED BY CW. LEE	DATE 1996/01/12						
			DRAFT WHERE APPLICABLE MUST REMAIN WITHIN DIMENSIONS		MATERIAL NO. SEE TABLE		THIS DRAWING CONTAINS INFORMATION THAT IS PROPRIETARY TO MOLEX INCORPORATED AND SHOULD NOT BE USED WITHOUT WRITTEN PERMISSION			