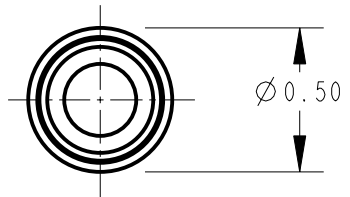
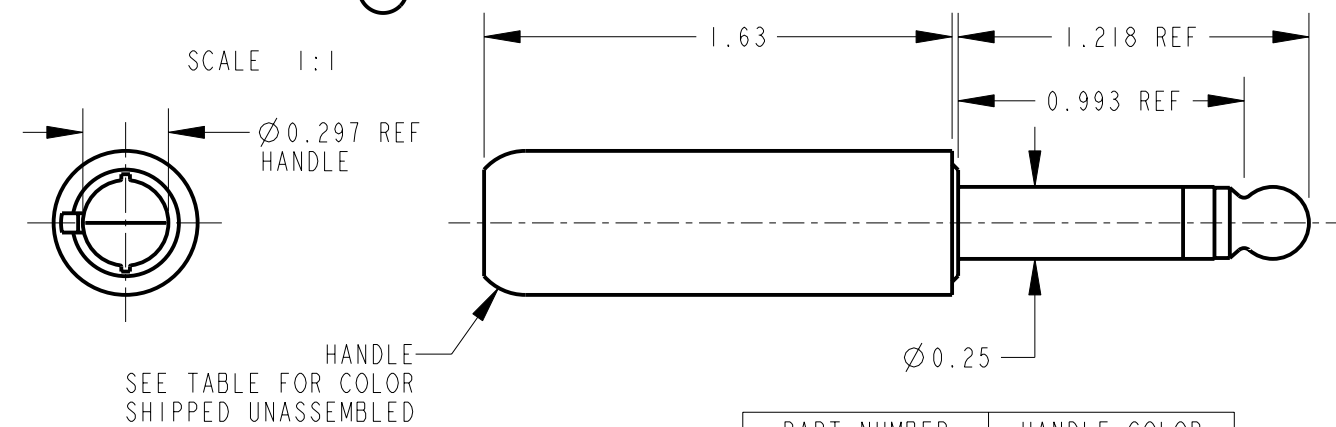


NOTES:

1. CABLE U-CLAMP, TERMINALS AND SCREWS ARE PACKED AND SHIPPED UNASSEMBLED AS K165X KIT.
2. MATERIALS:  
 PLUG BODY AND TIP ROD - BRASS  
 INSULATION - THERMOPLASTIC, BLACK  
 HANDLE - THERMOPLASTIC  
 SCREWS - BRASS  
 TERMINALS - BRASS, TIN PLATED  
 U-CLAMP - STEEL, TIN PLATED
3. THESE PRODUCTS ARE RoHS COMPLIANT.



PART NUMBER	HANDLE COLOR
440X	BLACK
445X	RED

CUSTOMER DRAWING

REV	ECO NUMBER	DATE	BY	APVD
A	26765	4-19-11	TO	TJK
REVISIONS				

★ STAR SYMBOL DENOTES CRITICAL DIMENSION

UNLESS OTHERWISE SPECIFIED

1. ALL DIMENSIONS IN INCHES  
 - TWO PLACE DECIMALS ±0.01  
 - THREE PLACE DECIMALS ±0.005  
 - ANGLES ±1°  
 - ALL DIA. CONCENTRIC WITHIN 0.005 T.I.R.
2. FEATURES ON THE SAME CENTERLINE MUST BE ALIGNED WITHIN ±0.002
3. REMOVE ALL BURRS

DO NOT SCALE DRAWING

THIS DRAWING DESCRIBES A DESIGN CONSIDERED PROPRIETARY IN NATURE, DEVELOPED AND MANUFACTURED BY SWITCHCRAFT INC. AND IS RELEASED ON A CONFIDENTIAL BASIS FOR IDENTIFICATION PURPOSES ONLY.

SIZE	WIDTH	MULT	LBS/M	TEMPER
FINISH			MATERIAL	
SPEC No.			SPEC No.	
FIRST USED ON		SCALE		
		3:2		
DATE DRAWN	BY	CHKD	APVD	
7-Mar-14	TO	TO	TJK	
		3-7-14	3-7-14	
NAME			PART No.	REV
2 CONDUCTOR PLUG Ø0.25			440X_445X	A

**Switchcraft®**

SHEET | OF |