

MATERIALS AND FINISHES:

SMA JACK STR IP68
BODY: CRIMP TUBE BRASS
PLATED GOLD

GASKET SILICONE RUBBER

SHRINK TUBE: VERSAFIT OR EQUIVALENT

CMP CONNECTOR

CABLE: DIA 1.37 OR EQUIVALENT

CENTER CONTACT: BERYLLIUM COPPER
PLATED GOLD SEE TABLE

BODY: PHOSPHOR BRONZE
PLATED GOLD

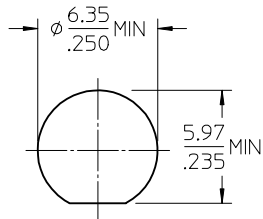
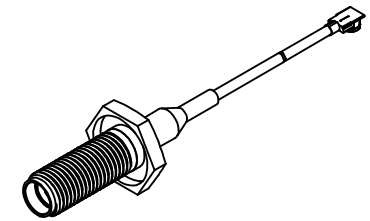
INSULATOR: TEFLON

CENTER CONTACT: PHOSPHOR BRONZE
PLATED GOLD

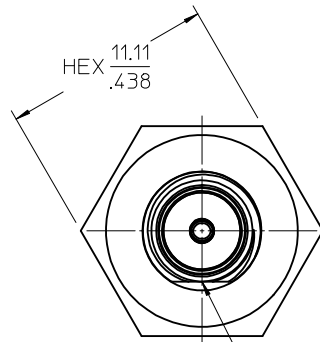
JAM NUT BRASS
PLATED GOLD

HOUSING: PBT

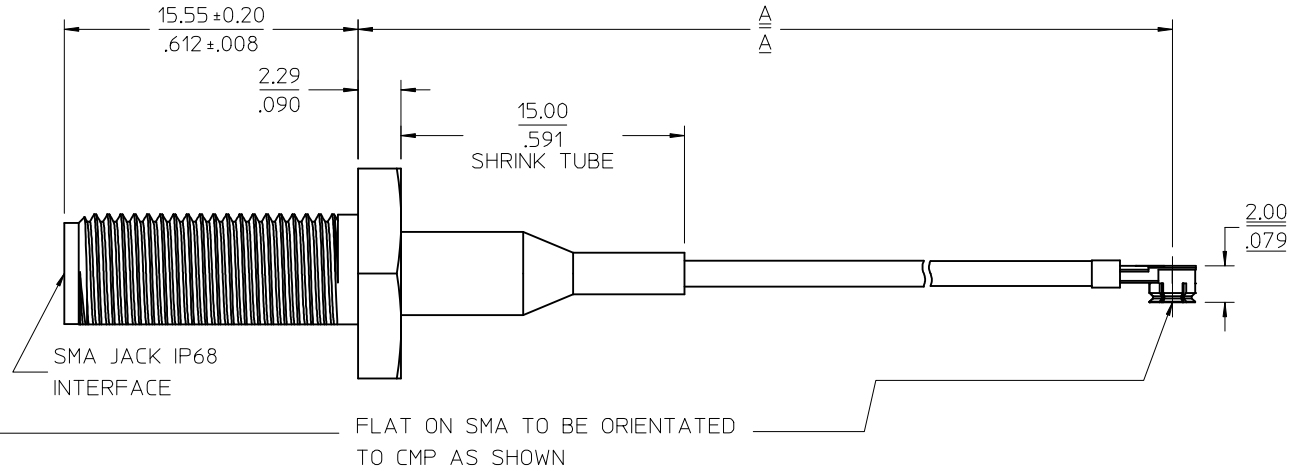
LOCK WASHER: SEE TABLE
PLATED GOLD



RECOMMENDED
PANEL LAYOUT

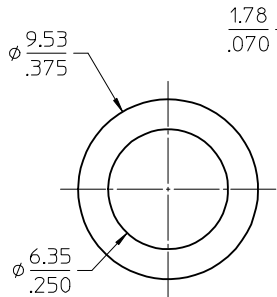


GASKET

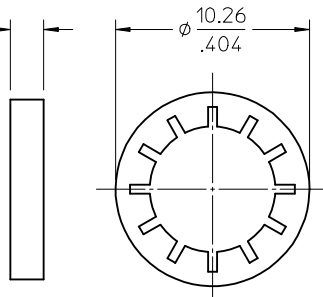


SMA JACK IP68
INTERFACE

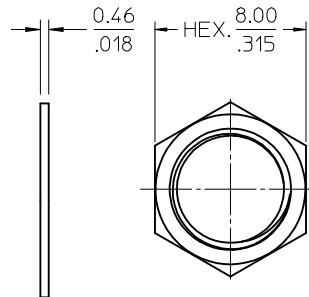
FLAT ON SMA TO BE ORIENTATED
TO CMP AS SHOWN



GASKET



LOCK WASHER



JAM NUT



89761-5372	GOLD FLASH	SPCC
89761-5371	10 MICROINCHES MIN	PHOSPHOR BRONZE
89761-5370	10 MICROINCHES MIN	PHOSPHOR BRONZE
PART NO.	CENTER CONTACT	LOCK WASHER

89761-5372	3.543±.079	90.00±2.00	POLYBAG
89761-5371	7.874±.197	200.00±5.00	POLYBAG
89761-5370	3.543±.079	90.00±2.00	POLYBAG
PART NO.	IN	MM	PACKAGING
DIM	A		
MIL-STD-348A, FIG. 310.2		SMA JACK INTERFACE	
SPECIFICATION		DESCRIPTION	

CHG: TYPO MXT PN PER RF15-E393	EC NO: URF2016-0391	2015/10/01
DRWN:CWE102	CHKD:	
APPR:YCHENG	DESCRIPTION	2015/11/25
REV	A4	

QUALITY SYMBOLS
▽=0
▽=0
▽=0

GENERAL TOLERANCES (UNLESS SPECIFIED)	
4 PLACES ±	---
3 PLACES ±	---
2 PLACES ±	---
1 PLACE ±	---
0 PLACE ±	---
ANGULAR ± 2 °	
DRAFT WHERE APPLICABLE MUST REMAIN WITHIN DIMENSIONS	

DIMENSION STYLE	
MM/IN	
DRAWN BY	DATE
CWE102	2010/08/27
CHECKED BY	DATE
KERRIE	2010/08/27
APPROVED BY	DATE
MHUANG	2010/09/18
MATERIAL NO.	DOCUMENT NO.
SEE TABLE	SD-89761-537
SIZE C	THIS DRAWING CONTAINS INFORMATION THAT IS PROPRIETARY TO MOLEX INCORPORATED AND SHOULD NOT BE USED WITHOUT WRITTEN PERMISSION

SCALE	DESIGN UNITS	THIRD ANGLE PROJECTION
	METRIC	⊙ □
TITLE		
CA, SMA JACK BLKHD IP68 TO CMP WITH 1.37MM CABLE CA-SMA_J/CMP_P		
molex		
DOCUMENT NO.		SHEET NO.
SD-89761-537		1 OF 1