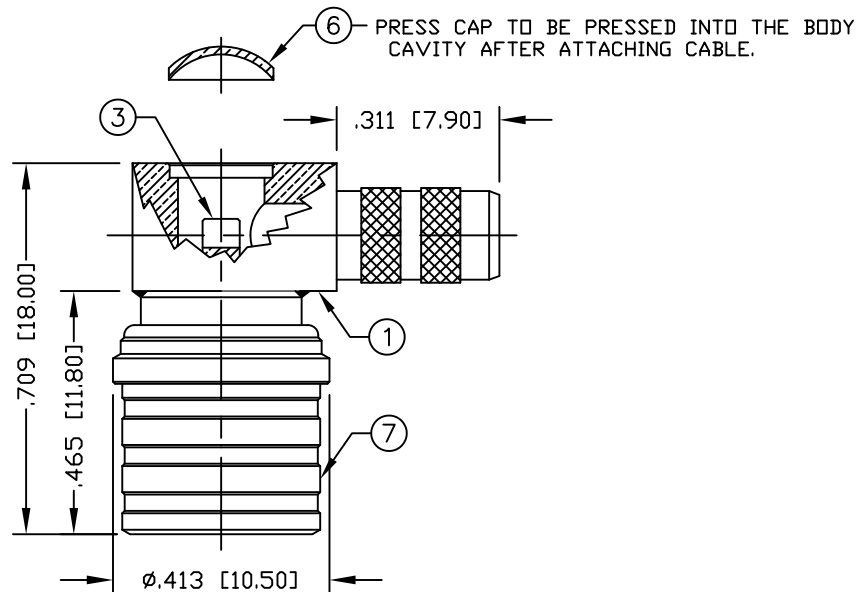


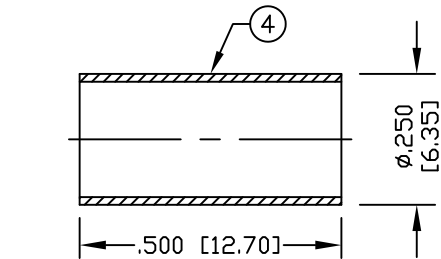
PART NO.

**ROA-5010-C**

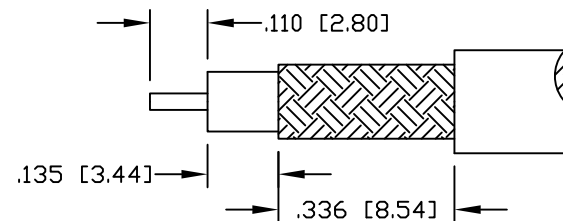
REV	DESCRIPTION	DWN	DATE	APPROVED
C	UPDATED DWG FORMAT	CZS	04/23/21	JDMc



**\*\*USE QMA TOOL TO PRESS THE END CAP (ITEM 6) INTO THE BODY TO AVOID DAMAGE TO THE SPRING RFI PART NUMBER "QMA-TOOL"**



**RECOMMENDED CRIMP DIE: .213"**



**RECOMMENDED STRIPING DIMENSIONS**

### SPECIFICATIONS:

IMPEDANCE: 50 Ohms  
 FREQUENCY RANGE: 0-6 GHz  
 INSULATION RESISTANCE: 5k MΩ min.  
 TEMPERATURE RANGE: -65°C TO 165°C

FOR CABLES:

(C) RG-55, 55A, 55B, 142, 142A, 142B, 223 & 400/U,  
 ALPHA 9055, 9055B, 9223, BELDEN 8219, 83242 & 84142  
 (C2) TIMES LMR-200, ALPHA 9848 & MSI-22

ATTACH CABLE TO CONNECTOR BY  
 SOLDERING THE CABLE CENTER CONDUCTOR  
 TO THE PIN SLOT INSIDE THE CONNECTOR CAVITY.

#	DESCRIPTION	QTY	MATERIAL	FINISH
7	COUPLING NUT	1	BRASS	CuSnZn
6	PRESS CAP	1	BRASS	CuSnZn
5	GROUND RING	1	PHOSPHOR BRONZE	CuSnZn
4	FERRULE	1	BRASS	CuSnZn
3	PIN	1	BRASS	GOLD
2	INSULATOR	1	PTFE	NATURAL
1	BODY	1	BRASS	CuSnZn

CUSTOMER OUTLINE DRAWING	
ALL DIMENSIONS ARE REFERENCE ONLY	
UNLESS OTHERWISE SPECIFIED: DIMENSIONS ARE IN INCHES AND [MILLIMETERS]	
DRAWN C. ZUÑIGA	04/23/21
CHECKED	
ORJ DRAWN C. ZUÑIGA	05/05/05

**RoHS COMPLIANT**

PROPRIETARY AND CONFIDENTIAL  
 THIS DRAWING CONTAINS INFORMATION PROPRIETARY TO RF INDUSTRIES, ANY UNAUTHORIZED USE OF THIS DRAWING IS EXPRESSLY PROHIBITED WITHOUT WRITTEN PERMISSION FROM RF INDUSTRIES. ANY VIOLATION IS PUNISHABLE UNDER U.S. COPYRIGHT LAWS.

**RFconnectors**  
 DIVISION OF RF INDUSTRIES, LTD. (858) 549-6345 FAX

**QMA PLUG, CRIMP**  
 RIGHT ANGLE

DWG #

**RQA-5010-C**

CABLE GROUP	CONTROL #	SCALE	FORMAT	SHEET	REVISION
C & C2	000000	NTS	A	1 OF 1	C