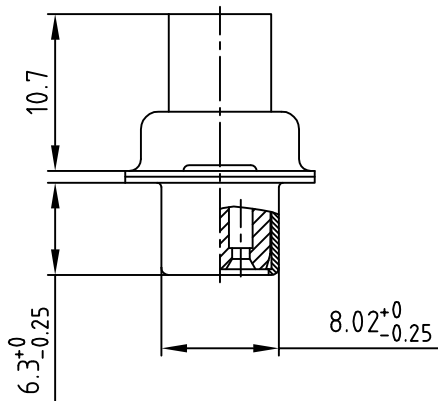
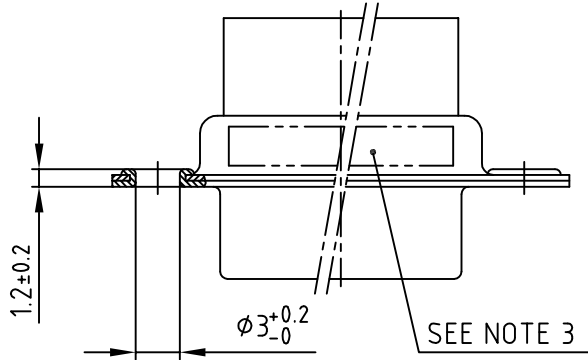
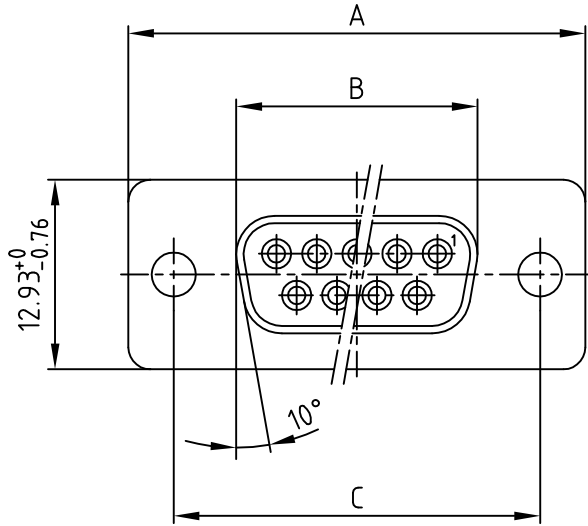


used for: D-SUB



No. of Pos.	A -0.76	B -0.25	C	Part-NO.
9	31.19	16.46	25.00 <sup>+0.12</sup> / <sub>-0.13</sub>	164X11769X
15	39.52	24.79	33.30 <sup>+0.15</sup> / <sub>-0.1</sub>	164X11779X
25	53.42	38.50	47.04±0.13	164X11789X
37	69.70	54.96	63.50±0.13	164X11799X

NOTES:

- METALSHELLS: STEEL; min. 320µin TIN
- INSULATORS: PBT GF UL 94 V-0; BLACK
- CONNECTOR IS PART MARKED: PART-NO. CONEC ABC

Directive 2002/95/EC RoHS compliant

THIS DRAWING MAY NOT BE COPIED OR REPRODUCED IN ANY WAY, AND MAY NOT BE PASSED ON TO A THIRD PARTY WITHOUT WRITTEN PERMISSION. OWNERSHIP AND COPYRIGHT OF CONEC GmbH DO NOT ALTER CAD DRAWING BY HAND

tolerance				
2001	date	name		
drawn	11.04.	Parei	title: D-SUB Socket connector CRIMP STYLE 9-37pos.	
appd.	11.04.	E. Mickenbecker		
norm	DIN 41652			
d-old				
rev.	description	date	name	dwg no: AutoCAD 2000 16K1A177A
part no: SEE TABLE				DIN-A 4 sh: 1/1

4

3

2

1