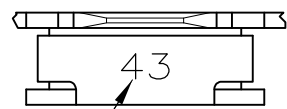


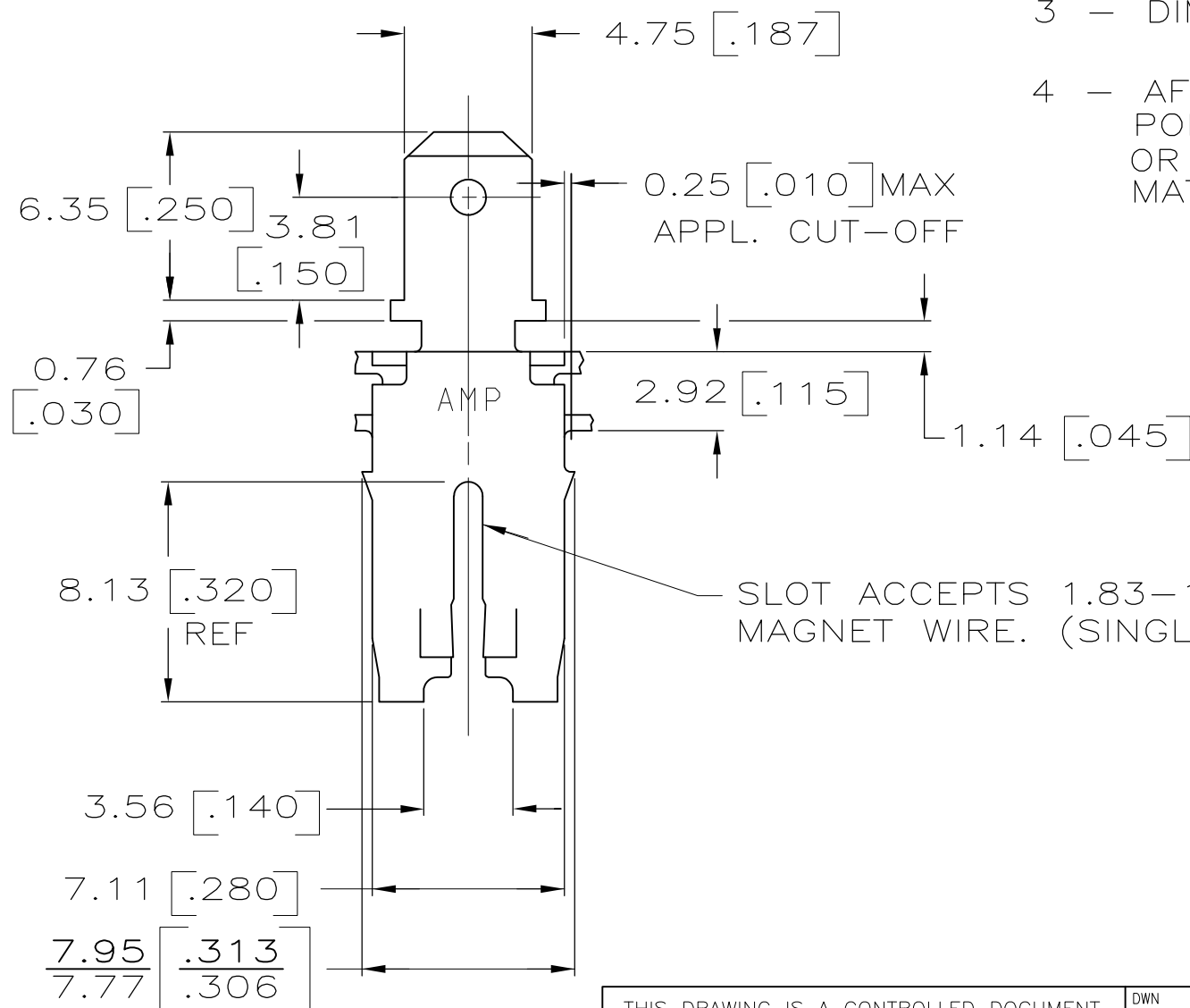
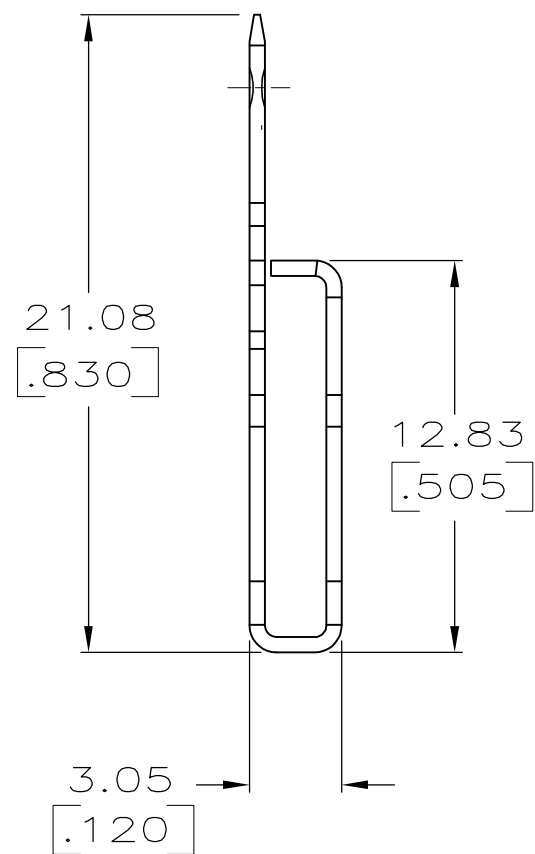
THIS DRAWING IS UNPUBLISHED. RELEASED FOR PUBLICATION
 © COPYRIGHT - By - ALL RIGHTS RESERVED.

LOC	DIST	REVISIONS					
AF	50	P	LTR	DESCRIPTION	DATE	DWN	APVD
		D1		ECR-13-017177	05NOV13	PKS	RRP



IDENTIFICATION NO.
FOR MAGNET WIRE RANGE

- FOR MAG-MATE CAVITY SPECIFICATION REFER TO APPLICATION SPEC #114-2066.
- CONTINUOUS STRIP ON REELS WITH TERMINALS LOCATED ON 8.38 [.330] CENTERS.
- DIMENSIONS IN BRACKETS ARE IN INCHES.
- AFTER INSERTION INTO PLASTIC HOLDER TAB PORTION MUST BE BENT OVER 45° TO 90° OR POTTED-IN TO PREVENT PULL-OUT WHEN MATING RECEPTACLE IS DISCONNECTED.



SLOT ACCEPTS 1.83-1.54^{DIA} MM [#13-14.5] COPPER MAGNET WIRE. (SINGLE WIRE ONLY)

METRIC

63428-1

THIS DRAWING IS A CONTROLLED DOCUMENT.		DWN	JR RUTH	2-12-86	STE TE Connectivity		
DIMENSIONS: INCHES		CHK	C ATHERTON	2-12-86			
TOLERANCES UNLESS OTHERWISE SPECIFIED:		APVD	G YETTER	2-12-86	NAME MAG-MATE 187 FASTON TAB		
0 PLC ± -		PRODUCT SPEC		-			
1 PLC ± -		APPLICATION SPEC		-			
2 PLC ± -		SIZE	A3	CAGE CODE	00779	DRAWING NO	C-63428
3 PLC ± 0.38 [.015]		WEIGHT		-			
4 PLC ± -		CUSTOMER DRAWING		SCALE			NTS
ANGLES ± -		FINISH		TIN			
MATERIAL		BRASS		SHEET			1 OF 1
FINISH		TIN		REV			D1