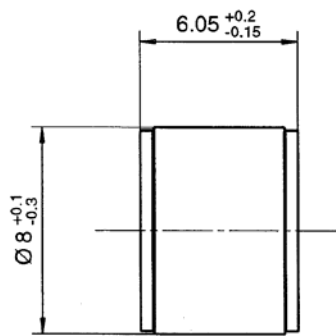


metal ceramic drain
gas capsule 90V 20A 20KA

53ZB01-090



All dimensions are in mm; tolerances according to ISO 2768 m-H

Documents

Terms in accordance with ITU-T Rec. K. 12 and
DIN 57845 / VDE 0845

Weight

Weight 1.5 g/pce

While the information has been carefully compiled to the best of our knowledge, nothing is intended as representation or warranty on our part and no statement herein shall be construed as recommendation to infringe existing patents. In the effort to improve our products, we reserve the right to make changes judged to be necessary.

| Draft | Date | Approved | Date | Rev. | Engineering change number | Name | Date |
|--|----------|-------------------|----------|--|---------------------------|-----------|---------------|
| Inge Mühlauer | 22/06/04 | Sa. Krautenbacher | 19.03.14 | b00 | 14-0352 | T. Krojer | 19.03.14 |
| Rosenberger Hochfrequenztechnik GmbH & Co. KG P.O.Box 1260 D-84526 Tittmoning Germany www.rosenberger.de | | | | Tel.: +49 8684 18-0 Fax: +49 8684 18-499 email: info@rosenberger.de | | | Page 1 / 2 |

metal ceramic drain
gas capsule 90V 20A 20KA

53ZB01-090

Surge Arrester**2-Electrode-Arrester**

| | | |
|---|----------------|--------|
| DC spark-over voltage ¹⁾²⁾ | 90 ± 20 | V % |
| Impulse spark-over voltage at 100 V/μs - for 99 % of measured values - typical values of distribution | < 500 < 450 | V V |
| at 1 kV/μs - for 99 % of measured values - typical values of distribution | < 600 < 550 | V V |
| Nominal impulse discharge current (wave 8/20 μs) | 20 | kA |
| Single impulse discharge current (wave 8/20 μs) | 25 | kA |
| Single impulse discharge current (wave 10/350 μs) | 5 | kA |
| Nominal alternating discharge current (50 Hz, 1 s) | 20 | A |
| Alternating discharge current (50 Hz, 9 cycles) | 100 | A |
| Insulation resistance at 50 V _{dc} | > 10 | GΩ |
| Capacitance at 1 MHz | < 1.5 | pF |
| Arc voltage at 1 A | ~ 10 | V |
| Glow to arc transition current | ~ 0.5 | A |
| Glow voltage | ~ 60 | V |
| Weight | ~ 1.5 | g |
| Operation and storage temperature | -40 ... +90 | °C |
| Climatic category (IEC 60068-1) | 40/ 90/ 21 | |

¹⁾ At delivery AQL 0.65 level II, DIN ISO 2859

²⁾ In ionized mode

Terms in accordance with ITU-T Rec. K.12 and DIN 57845/VDE0845