

PRODUCT NUMBER
10120411-YXXXLF

RoHS COMPATIBLE, SEE NOTE 4

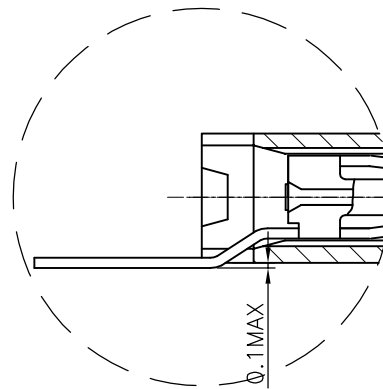
PACKAGING, SEE NOTE 3

NBR OF POS	DIM "A"	DIM "B"
02	5.00	2.54
03	7.54	5.08
04	10.08	7.62
05	12.62	10.16

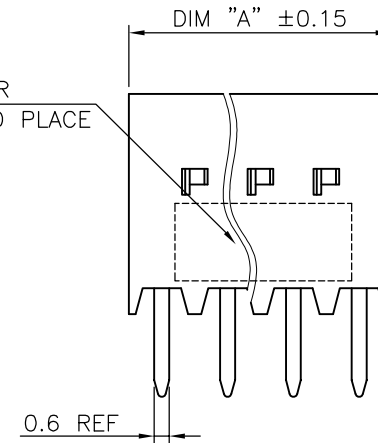
3= 0.76µm GOLD ON CONTACT AREA.
2.0µm MIN MATTE TIN ON TAIL.

4= 2.0µm MIN MATTE TIN FULL PLATED

1.27µm Ni MIN UNDERPLATING



AREA FOR
PICK AND PLACE



NOTES:

1 - HOUSING: HIGH TEMPERATURE THERMOPLASTIC GLASS FILLED
FLAME RETARDANT PER UL 94 V-0, GREY COLOUR.

2 - TERMINAL MATERIAL: PHOSPHOR BRONZE.

3 - PACKAGING :
K = TAPE & REEL PACKAGING
T = TUBE PACKAGING

4 - RoHS COMPATIBLE PRODUCT SPECIFICATIONS

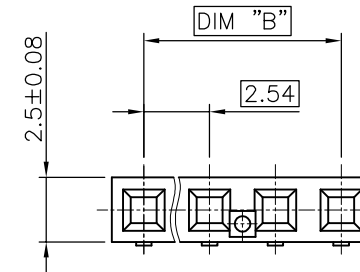
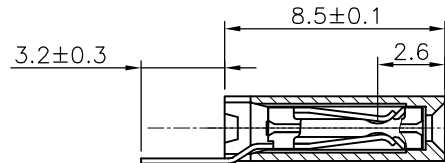
a - PLATING:

- "LF" MEANS THE PRODUCT IS LEAD-FREE,
2µm MINIMUM MATTE TIN OVER 1.27µm
MINIMUM NICKEL UNDERPLATE.

b - MANUFACTURING PROCESS COMPATIBILITY

- THE HOUSING WILL WITHSTAND EXPOSURE TO
260°C PEAK TEMPERATURE FOR 30 SECONDS
MAX IN A CONVECTION, INFRA-RED OR VAPOR
PHASE OR REFLOW OVEN.

c - LEGAL STATEMENT: SEE GS-47-0004



mat'l. code		surface		tolerance		projection		product family	
SEE NOTES		ISO 1302		ISO 406 ISO 1101				DUBOX	
ltr	ecn no	dr	date	tolerances unless otherwise specified		mm		title	
A	F12-0003	LMU	12.04.18	angles	linear			RECEPTACLE SM	
B	F12-0074	JCO	12.06.19			scale 5/1		HORIZONTAL	
C	B-19114	LMU	14.10.21					dwg no	
D	B-19327	LMU	14.11.06	dr	L.MULIN	12.03.06	sheet 1 of 1		size
E	B-19926	BVE	15.01.08	engr	J.COMPAGNON	12.04.18	10120411		A3
				chr			type		Drawing
				appd	JCO	12.04.18	CUSTOMER		
sheet	revision								
index	sheet								



FCIconnect.com

Copyright FCI